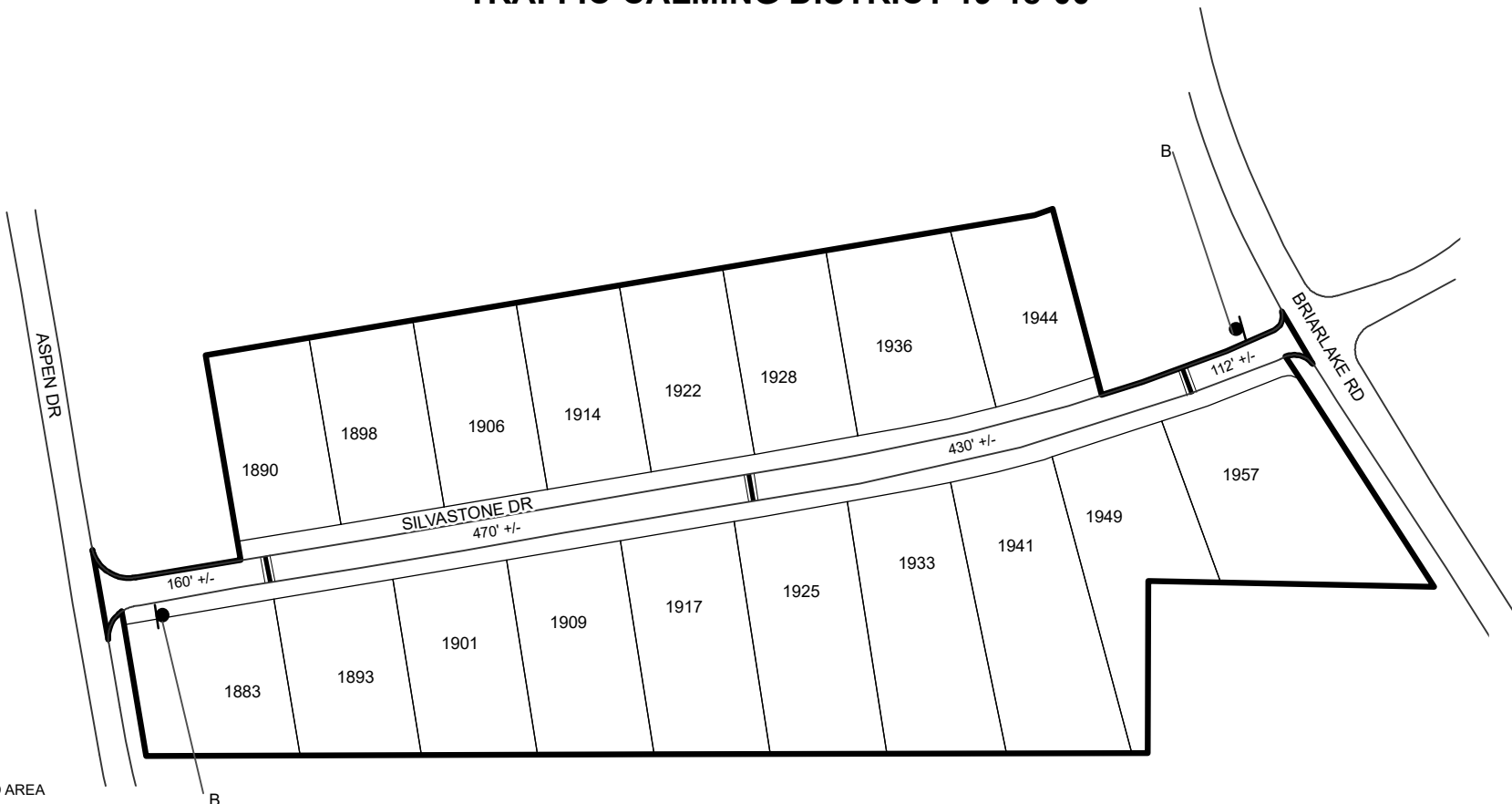


TRAFFIC CALMING DISTRICT 19-18-00

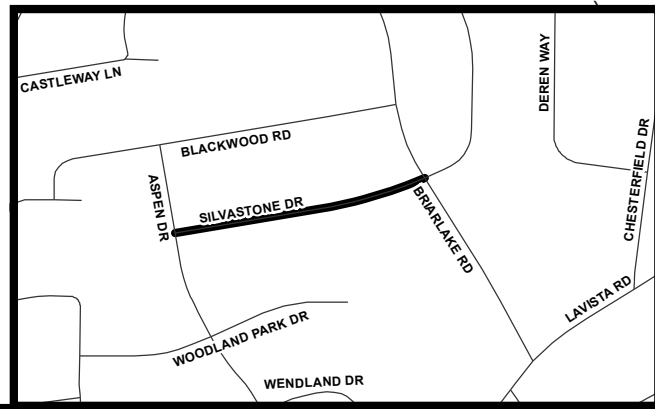


LEGEND

- AFFECTED AREA
- SPEED TABLES (3)
- PARCEL BOUNDARY AND ADDRESS NUMBER
- TRAFFIC CALMING DISTRICT SIGNS
- SPEED HUMPS AHEAD SIGN AND ADVISORY 15 MPH SPEED PLAQUE
- SPEED HUMPS AHEAD SIGN, CROSS STREET, AND ADVISORY 15 MPH SPEED PLAQUE
- 123 +/- DISTANCE BETWEEN TRAFFIC CALMING MEASURES (CENTER TO CENTER) & DISTANCE BETWEEN TRAFFIC CALMING MEASURES AND END OF STREET

NOTES:

- 1) NUMBER OF PARCELS IN AFFECTED AREA: 18
- 2) STREET(S) IN AFFECTED AREA: SILVASTONE DR
- 3) EDGE OF TRAFFIC CALMING MEASURE NOT TO ENCROACH WITHIN 5' OF DRIVEWAY RETURNS



DEKALB COUNTY
TRANSPORTATION DIVISION
TRAFFIC CALMING SECTION

DRAWN BY: CH
REVIEWED BY: CH
REVIEWED BY: AE
REVIEWED BY:

SCALE: N.T.S.
Date: 10/8/2019

SILVASTONE DR
DIST: 18 TH LAND LOT: 192
COMMISSION DISTRICTS: 1 & 7