



Quote

Miovision Technologies
 137 Glasgow Street, Suite 110
 Kitchener, ON N2G 4X8
 Tax ID #831042346

Customer: **Dekalb County (GA)**
 Payment Term: Net 30
 Shipping Term: FOB Shipping Point
 Software Start Date: 11/30/2021
 Software End Date: 11/29/2023
 Subscription Term (Months): 24

Quote Number:	Q-15613
Account Executive:	Johnny McLellan jmclellan@miovision.com
Date:	10/12/2021
Valid Until:	1/10/2022
Currency:	U.S. Dollar

Bill To

Dekalb County (GA)
 1950 West Exchange Place
 DeKalb, Georgia 30030
 United States

Ship To

Dekalb County (GA)
 1950 West Exchange Place
 DeKalb, Georgia 30030
 United States

Description	Qty	Price	Total
Miovision Scout Video Collection Unit	2	\$4,000.00	\$8,000.00
Scout Video Control Unit	2	Included	\$0.00
Scout Polemount	2	Included	\$0.00
UPS - UPS Standard	1	\$227.00	\$227.00

Subtotal (Net) : USD 8,227.00
Tax Total : USD 640.00
Total : USD 8,867.00

DataLink Usage Rates

Description	Rate
Intersection Count (1 hour)	\$21.00
Intersection Count with Premium Class (1 hour)	\$24.00
Light Goods Vehicle - Intersection counts (1 Hour)	\$2.00
Crosswalk Data (1 hour)	\$2.00
Intersection Count 24+ Hour Study (1 hour)	\$16.67
Intersection Count 24+ Hour Study with Premium Class (1 hour)	\$18.00
Travel Time Report Generation (1-Hour)	\$15.00
Travel Time Report Generation (24-Hour)	\$12.50
Road Volume Count (1 lane-hour)	\$2.00
Road Volume Count with Premium Class (1 lane-hour)	\$3.00
Light Goods Vehicle - Road Volume Counts (1 lane-hour)	\$0.25
Small Roundabout (1 hour)	\$36.00
Small Roundabout with Premium Class (1 hour)	\$39.00
Large Roundabout (1 Hour)	\$76.00
Large Roundabout with Premium Class (1 Hour)	\$79.00
Light Goods Vehicle - Roundabout Counts (1 Hour)	\$2.00
Pathway Volume (1 lane-hour)	\$6.00

Description	Rate
Junction Count (1 Hour)	\$18.00
Intersection Right Turn On Red	\$2.00
Rush Turnaround - 48 Hours	\$3.00
Rush Turnaround - 24 Hours	\$7.00

The Customer hereby agrees to order the products outlined above at the prices indicated, and acknowledges it has read, understands and agrees to be bound by the terms and conditions outlined at <http://miovision.com/terms-and-conditions>

Date: _____

Name: _____

Signature: _____

Select Payment Type:

Credit Card*

Purchase Order

Check (Net Term 30d)**

Bank Transfer

*Requires a Credit Card Authorization form

**Requires an approved Credit Application

Miovision Scout

Smart cities start with data
you can trust



Fully connected

Remotely monitor and change studies, and get notifications if something needs attention.



Multipurpose

Whether you're counting vehicles, bikes or people, if Scout can see it, Scout can count it.



Portable & durable

Quickly respond to customer requests, and make quick work of your time in the field.



Weatherproof

From Alaska to Dubai, Scout has been deployed in some of the world's most extreme climates.



5.5"
color display

64 GB
storage

355 hrs
of video

72 hrs
of battery life

mioVISION

Now you can perform multiple traffic studies simultaneously



INTERSECTION
COUNT



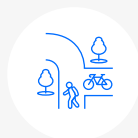
ROAD VOLUME
COUNTS



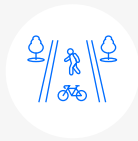
ROUNDBOUT
COUNT



VEHICLE
GAP DATA



JUNCTION
COUNT



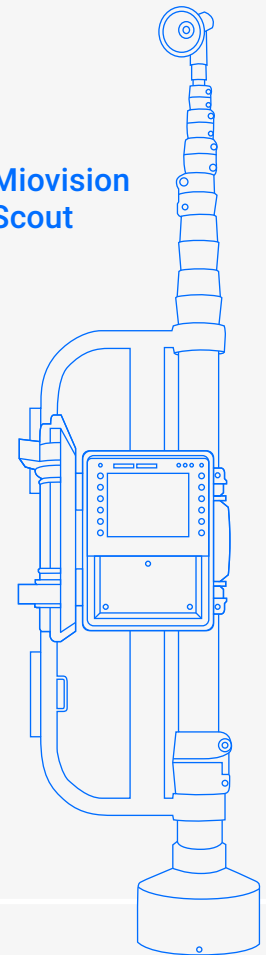
PATHWAY
COUNT



TRAVEL
TIME

If you can see it, we can count it using the world's most advanced traffic AI.

Miovision
Scout



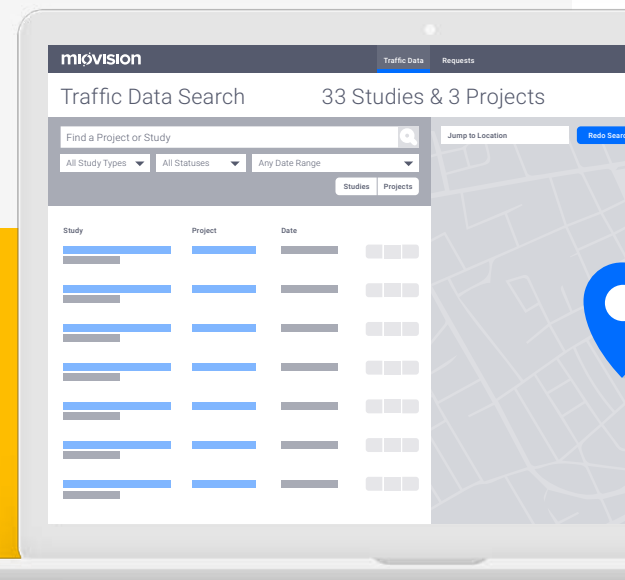
Miovision Scout is better with DataLink

Miovision DataLink is an easy-to-use online tool that connects traffic engineers and planners with local data collectors. It makes requesting and using traffic data simple by helping teams collaborate, track progress, and securely warehouse their data.



Miovision is changing the game for transportation planners. Good planning requires good data to help us make smart decisions.

– Robert Wertman,
Transportation Planning Supervisor
Madison County (Ind.) Council of Governments



For more information and to view webinars about Miovision Scout, visit us online at miovision.com

©2017 Miovision is a registered trademark of Miovision Technologies Inc.



Vehicle classifications

This guide describes how Miovision classifies traffic data from video and how this data is binned into groups

Classifications

Crosswalk	 Pedestrians
	 Bikes on crosswalk <ul style="list-style-type: none">Includes pedal bikes crossing a lane of traffic
	 Custom pedestrian classifications* (e-Scooters)
Roadways	 Bicycles on road <ul style="list-style-type: none">Includes pedal bikes traveling on the road with traffic, or in bike lanes on the road
	 Motorcycles <ul style="list-style-type: none">Includes motorcycles, mopeds, and other similar vehicles that are traveling on the roadRelevant FHWA Class: 1. Motorcycles
	 Cars <ul style="list-style-type: none">Includes cars and light trucks that are manufactured primarily for the purpose of carrying passengersThis includes minivans, and SUVsRelevant FHWA Classes: 2-3. Passenger Cars and Other Two-Axle, Four-Tire Passenger Vehicles
	 Light-goods vehicles <ul style="list-style-type: none">Includes cars and light trucks that are in operation primarily for the purpose of delivering goods or servicesThis includes pick-ups, and work vansRelevant FHWA Classes: 2-3. Passenger Cars and Other Two-Axle, Four-Tire Passenger Vehicles
	 Single-unit trucks <ul style="list-style-type: none">Includes moving trucks, dump trucks, cement mixers, garbage trucks, transport trucks without trailers or with small rigid trailers, large flatbed trucks or motor homesRelevant FHWA Classes: 5-7. Single Unit Trucks with 2, 3, or 4+ Axles
	 Articulated trucks <ul style="list-style-type: none">Includes tractor trailers with full length trailers or multiple trailersRelevant FHWA Classes: 8-13. Single Trailer and Multiple-Trailer Trucks
	 Buses <ul style="list-style-type: none">Includes passenger transport buses, including school buses and articulated busesRelevant FHWA Class: 4. Buses
	 Custom vehicle classifications* <ul style="list-style-type: none">Examples: Horse & Buggy, School Buses, Multi-Trailer Articulated Trucks, Planes, Trains, Taxis, and e-Scooters

*95% accuracy not guaranteed on custom classifications. Custom Classifications are only available through TrafficDataOnline, and must be enabled by a Miovision Customer Support representative.

Classification tiers

Miovision offers two tiers of classification, standard and premium

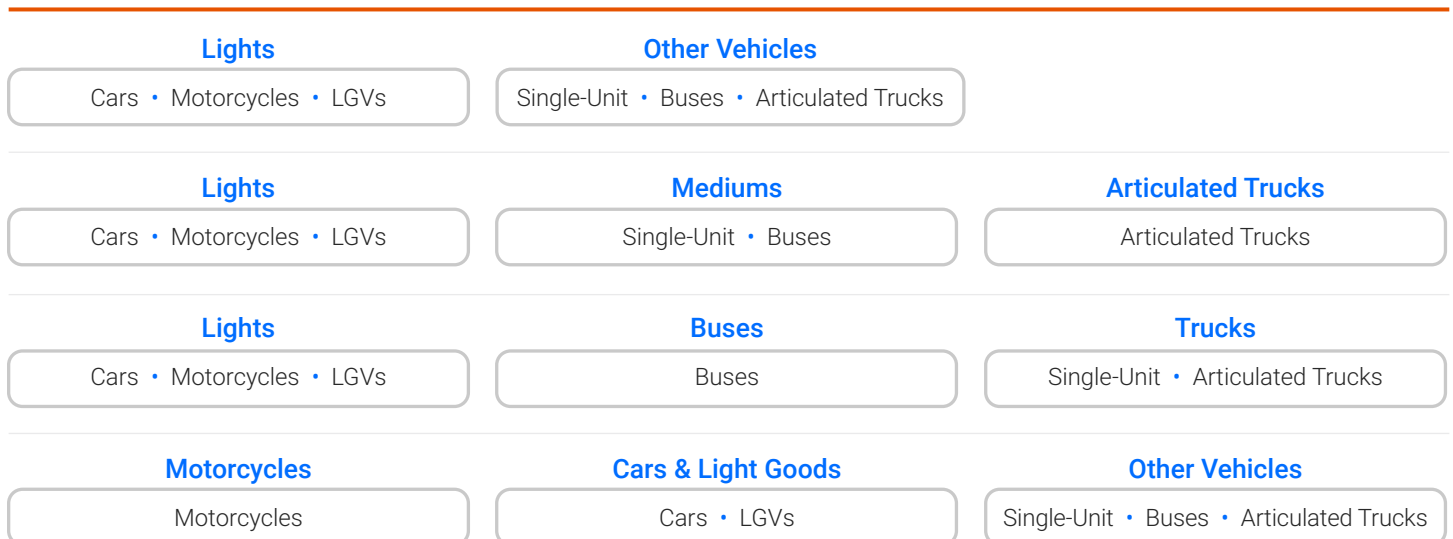
Miovision traffic data processing

Miovision traffic data is 95%+ accurate on 7 traffic study types, with a 72-hour turnaround time or faster. Whether you're collecting counts at intersections, in roadways, through roundabouts or along pathways, Miovision provides full classification (and custom classification types upon request), including vehicles, bikes, and people.

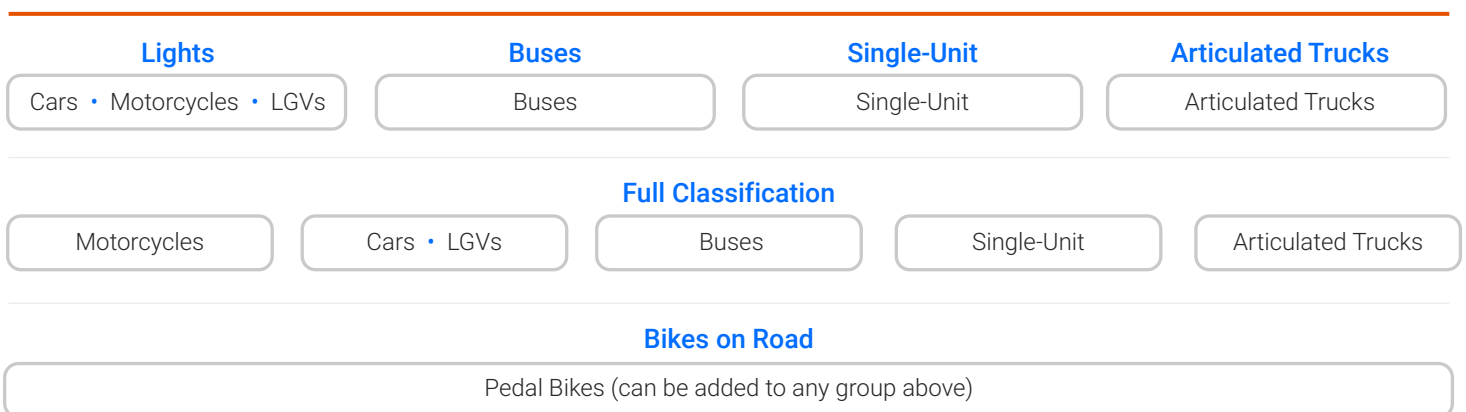
Study types

- Pedestrian Pathway
- Pedestrian Junction
- Small Roundabout
- Large Roundabout
- Travel Time
- TMC
- ATR

Standard classification (up to 3 groups) examples include:



Premium classification (4 or more groups) examples include:



ACCOUNT AND SHIPPING INFORMATION

Required Information:		
Company:		
IRS Tax ID # (US Customers Only):	This information is required for shipments to clear customs	
Account Administrator (Controls TDO account):		
Name:	Tel No:	
Email:		
Accounts Payable:		
Name:	Tel No:	
Email:		
Shipment Receiver (Consignee):		
Name:	Tel No:	
Email:		
Shipping:		
Street Address:		
City:	Prov / State:	Postal / ZIP Code:
The delivery is in a Residential Area: Commercial / Industrial Area:		
Shipping companies cannot bring full-sized transport trucks into a residential area and therefore such deliveries incur a \$35 surcharge from the shipping company.		
Delivery:		
Does the company have:		
A loading dock:	A motorized forklift:	Other means to lift pallet off delivery truck to desired location:
"No" to all of the above requires a delivery truck with a hydraulic tailgate to lower the pallet to the ground, a \$35 surcharge from the shipping company will be applied.		
Possible Hours of Delivery:		