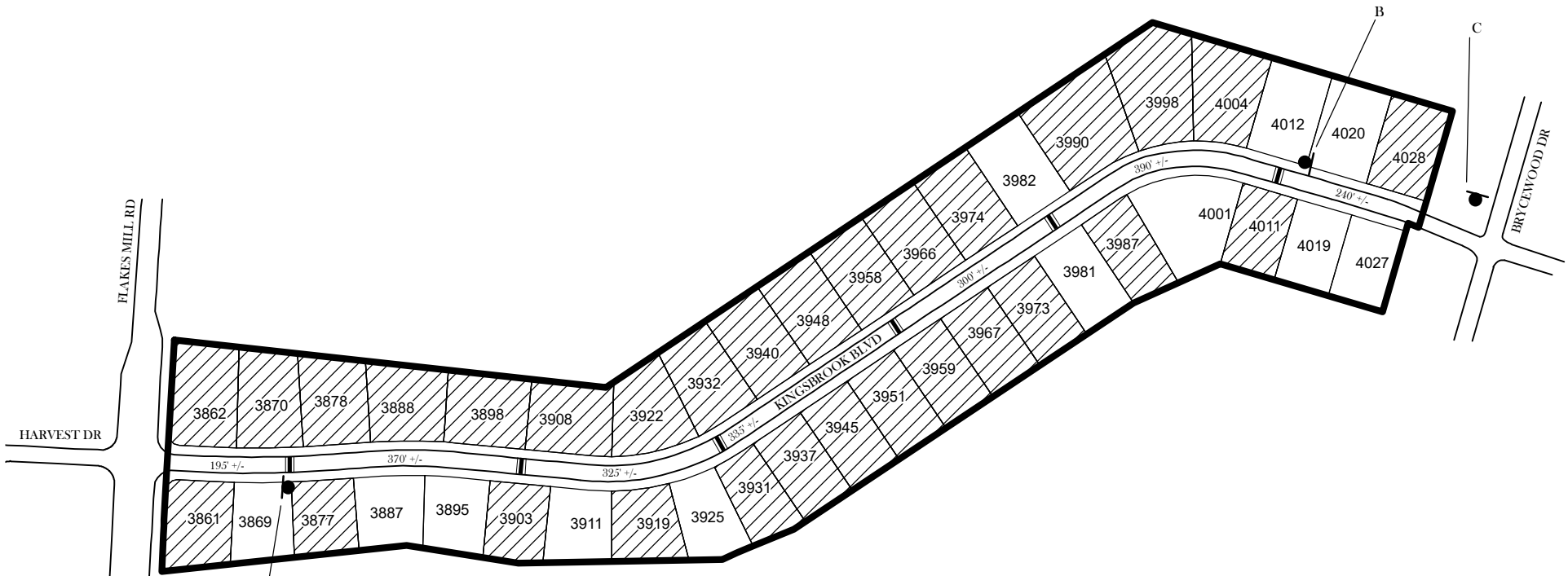


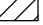
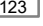


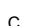


TRAFFIC CALMING DISTRICT 20-15-07

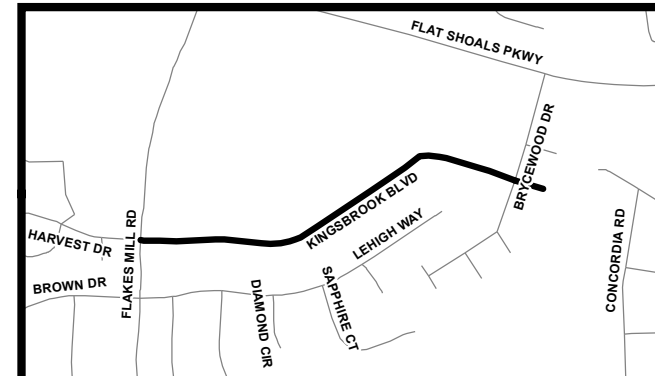


LEGEND

-  AFFECTED AREA
 -  SPEED TABLES (6)
 -  YES VOTES (30)
 -  PARCEL BOUNDARY AND ADDRESS NUMBER
 -  TRAFFIC CALMING DISTRICT SIGNS
 -  SPEED HUMPS AHEAD SIGN AND ADVISORY 15 MPH SPEED PLAQUE
 -  SPEED HUMP AHEAD SIGN, CROSS STREET, AND ADVISORY 15 MPH SPEED PLAQUE
- 123 +/- DISTANCE BETWEEN TRAFFIC CALMING MEASURES (CENTER TO CENTER) & DISTANCE BETWEEN TRAFFIC CALMING MEASURES AND END OF STREET

NOTES:

- 1] NUMBER OF PARCELS IN AFFECTED AREA: 42
- 2] STREET(S) IN AFFECTED AREA: KINGSBROOK BLVD
- 3] EDGE OF TRAFFIC CALMING MEASURE NOT TO ENCROACH WITHIN 5' OF DRIVEWAY RETURNS



DEKALB COUNTY
TRANSPORTATION DIVISION
TRAFFIC CALMING SECTION

DRAWN BY: CH
REVIEWED BY: CH
REVIEWED BY:
REVIEWED BY:

SCALE: N.T.S.

Date: 3/24/2020

KINGSBROOK BLVD

DIST: 15 TH LAND LOT: 61

COMMISSION DISTRICTS: 3 & 7