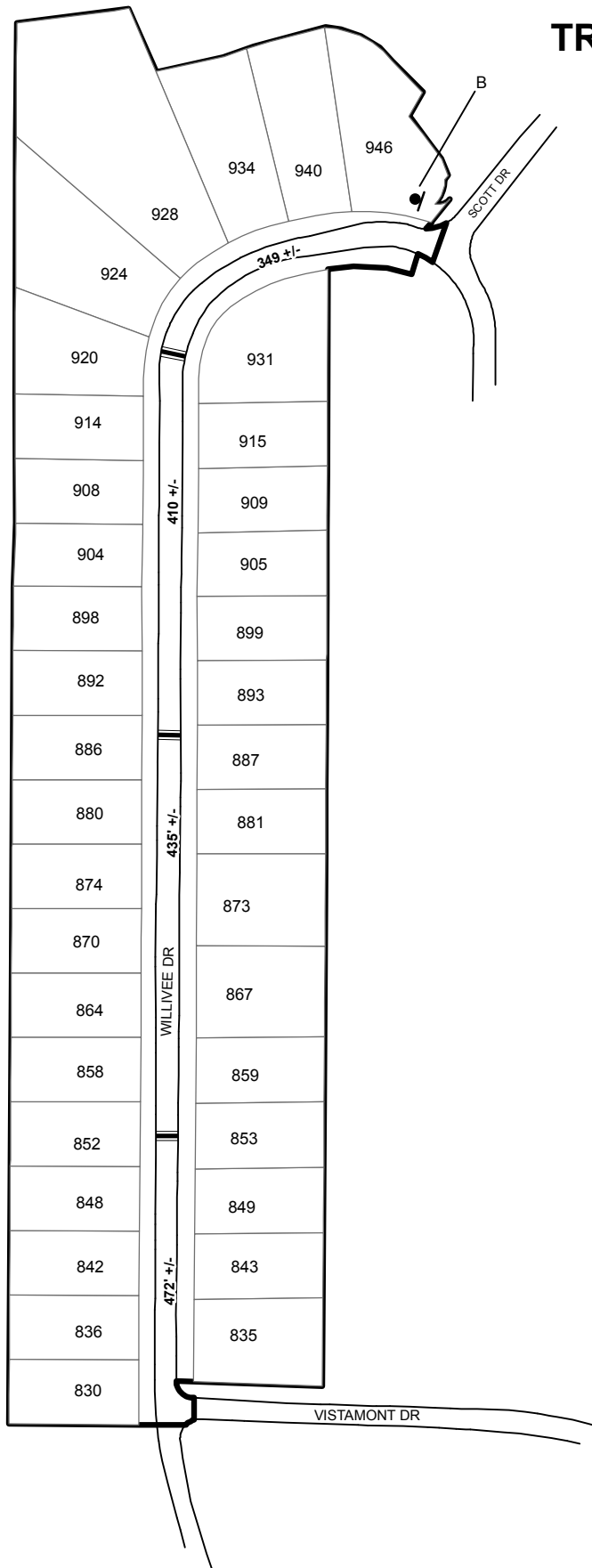


# TRAFFIC CALMING DISTRICT 18-18-00



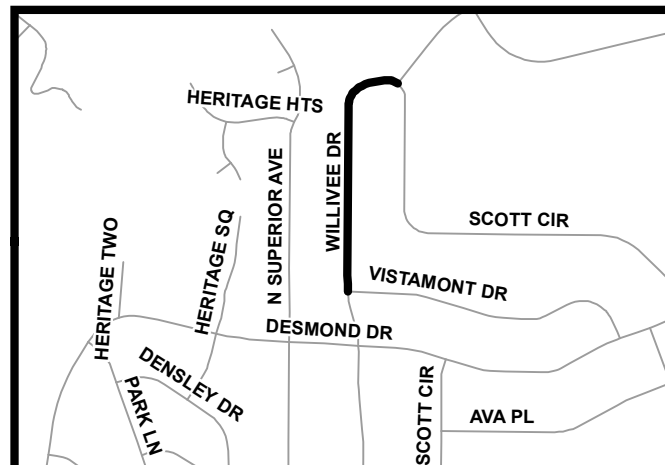
### LEGEND

- AFFECTED AREA
- SPEED TABLES (3)
- PARCEL BOUNDARY AND ADDRESS NUMBER
- SPEED HUMPS AHEAD SIGN AND ADVISORY 15 MPH SPEED PLAQUE

123 +/- DISTANCE BETWEEN TRAFFIC CALMING MEASURES (CENTER TO CENTER) & DISTANCE BETWEEN TRAFFIC CALMING MEASURES AND END OF STREET

**NOTES:**

- 1] NUMBER OF PARCELS IN AFFECTED AREA: 37
- 2] STREET(S) IN AFFECTED AREA: WILLIVEE DR
- 3] EDGE OF TRAFFIC CALMING MEASURE NOT TO ENCROACH WITHIN 5' OF DRIVEWAY RETURNS



**DEKALB COUNTY  
TRANSPORTATION DIVISION  
TRAFFIC CALMING SECTION**

DRAWN BY: CH  
REVIEWED BY: CH  
REVIEWED BY: AE  
REVIEWED BY: PGK

SCALE: NTS

Date: 5/22/2018

WILLIVEE DR  
DIST: 18TH LAND LOT: 61 & 102  
COMMISSION DISTRICTS: 2 & 6