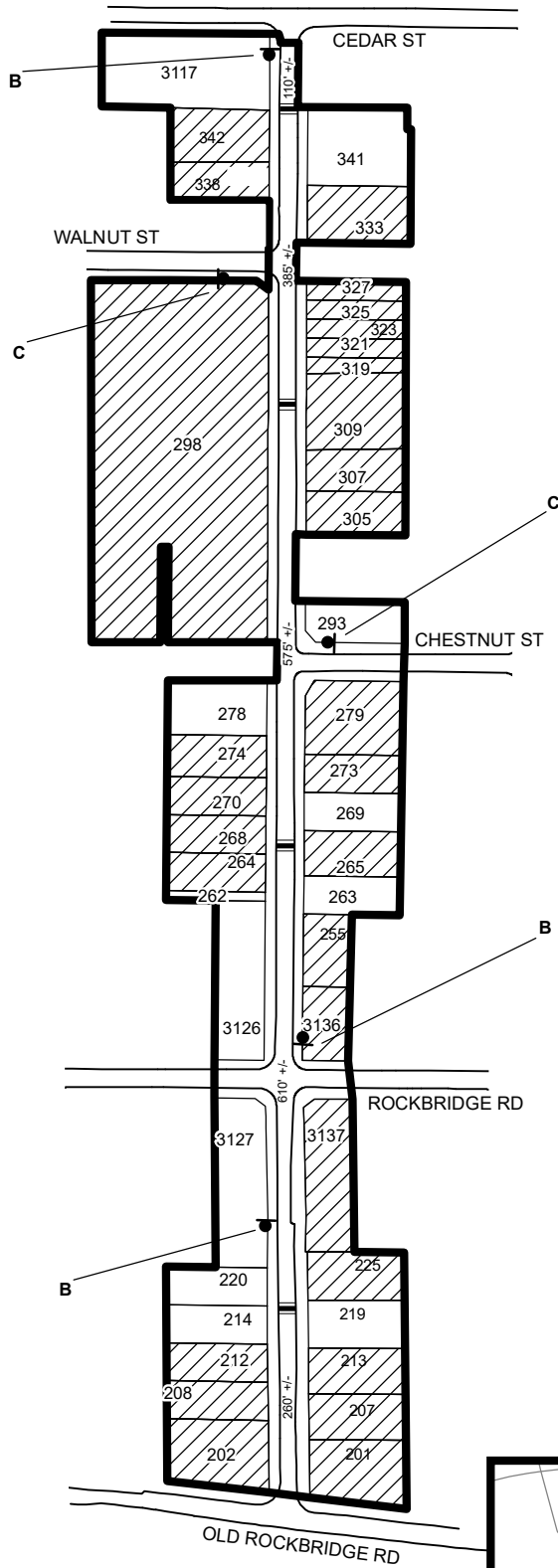



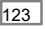

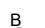



TRAFFIC CALMING DISTRICT 19-18-09

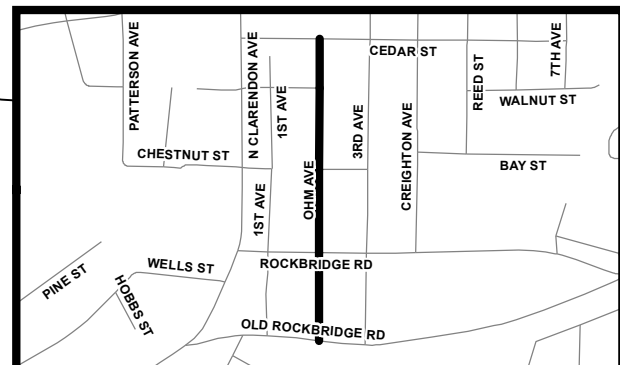


LEGEND

-  AFFECTED AREA
-  SPEED TABLES (4)
-  YES VOTES (29)
-  PARCEL BOUNDARY AND ADDRESS NUMBER
-  TRAFFIC CALMING DISTRICT SIGNS
-  SPEED HUMPS AHEAD SIGN AND ADVISORY 15 MPH SPEED PLAQUE
-  SPEED HUMP AHEAD SIGN, CROSS STREET, AND ADVISORY 15 MPH SPEED PLAQUE
- 123 +/- DISTANCE BETWEEN TRAFFIC CALMING MEASURES (CENTER TO CENTER) & DISTANCE BETWEEN TRAFFIC CALMING MEASURES AND END OF STREET

NOTES:

- 1] NUMBER OF PARCELS IN AFFECTED AREA: 41
- 2] STREET(S) IN AFFECTED AREA: OHM AVE, CEDAR ST, ROCKBRIDGE RD
- 3] EDGE OF TRAFFIC CALMING MEASURE NOT TO ENCROACH WITHIN 5' OF DRIVEWAY RETURNS



DEKALB COUNTY
TRANSPORTATION DIVISION
TRAFFIC CALMING SECTION

DRAWN BY: CH
REVIEWED BY: CH
REVIEWED BY:
REVIEWED BY:

SCALE: N.T.S.

Date: 12/10/2019

OHM AVE
DIST: 18 TH LAND LOT: 09
COMMISSION DISTRICTS: 4 & 6