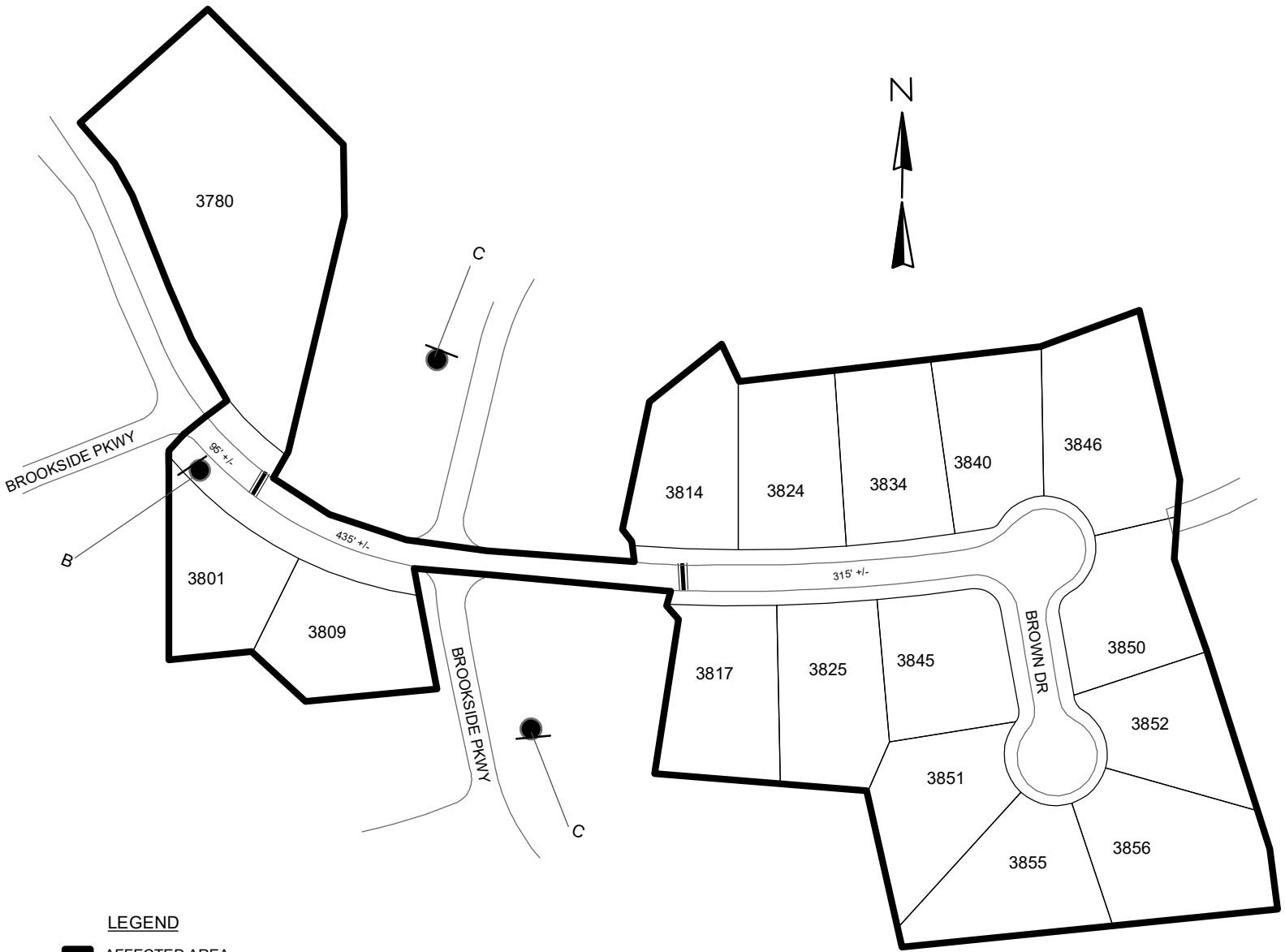


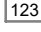

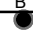
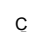


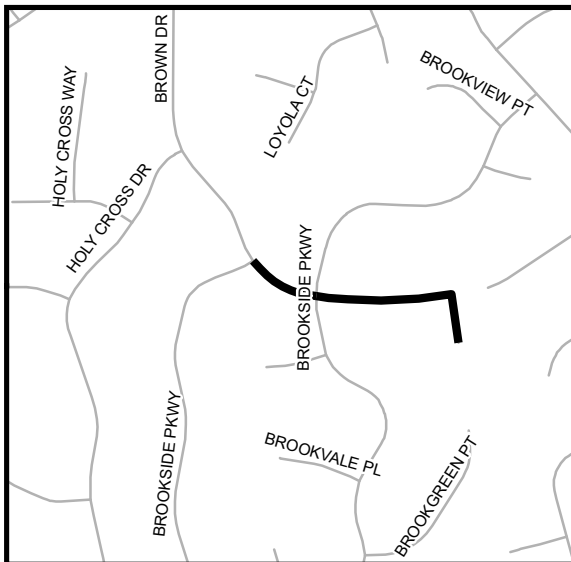
TRAFFIC CALMING DISTRICT 23-15-00



LEGEND

-  AFFECTED AREA
 -  SPEED TABLES (2)
 -  123 PARCEL BOUNDARY AND ADDRESS NUMBER
 -  A TRAFFIC CALMING DISTRICT SIGNS
 -  B SPEED HUMPS AHEAD SIGN AND ADVISORY 15 MPH SPEED PLAQUE
 -  C SPEED HUMP AHEAD SIGN, CROSS STREET, AND ADVISORY 15 MPH SPEED PLAQUE
- 123 +/- DISTANCE BETWEEN TRAFFIC CALMING MEASURES (CENTER TO CENTER) & DISTANCE BETWEEN TRAFFIC CALMING MEASURES AND END OF STREET

- NOTES:
- 1] NUMBER OF PARCELS IN AFFECTED AREA: 16
 - 2] STREET(S) IN AFFECTED AREA: BROWN DR
 - 3] EDGE OF TRAFFIC CALMING MEASURE NOT TO ENCROACH WITHIN 5' OF DRIVEWAY RETURNS



DEKALB COUNTY
TRANSPORTATION DIVISION
TRAFFIC CALMING SECTION

DRAWN BY: AE
REVIEWED BY: AE
REVIEWED BY:
REVIEWED BY:

SCALE: N.T.S.
Date: 5/9/2023

BROWN DRIVE (BROOKSIDE PKWY TO CUL-DE-SAC)
DIST: 15 TH LAND LOT: 36
COMMISSION DISTRICTS: 3 & 7