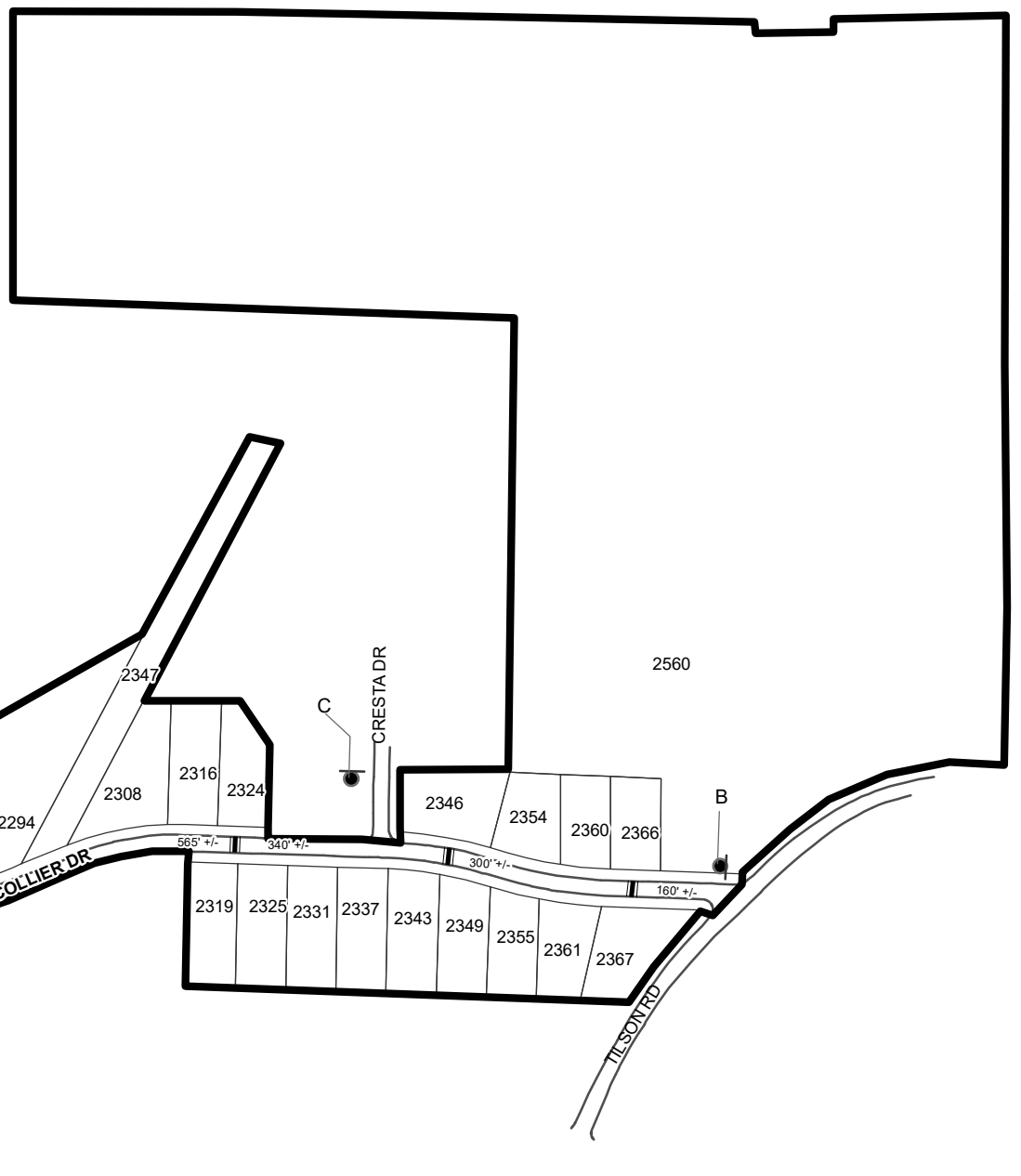
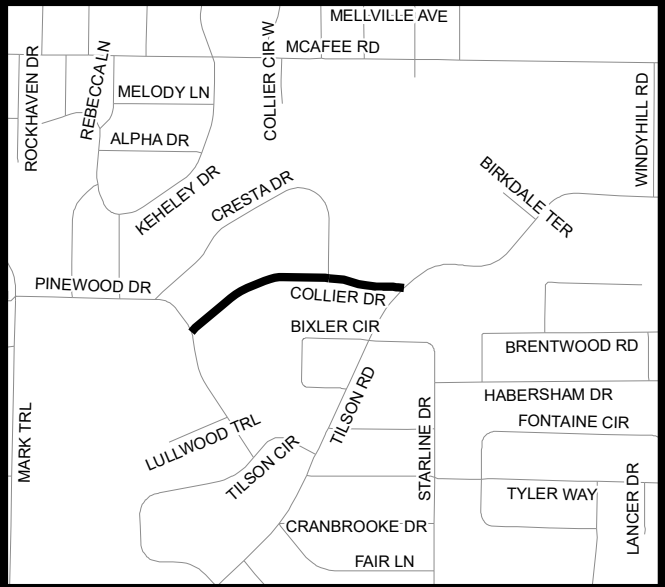


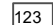

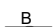

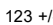


# TRAFFIC CALMING DISTRICT 22-15-00



## LEGEND

-  AFFECTED AREA
-  SPEED TABLES (4)
-  PARCEL BOUNDARY AND ADDRESS NUMBER
-  TRAFFIC CALMING DISTRICT SIGNS
-  SPEED HUMPS AHEAD SIGN AND ADVISORY 15 MPH SPEED PLAQUE
-  SPEED HUMP AHEAD SIGN, CROSS STREET, AND ADVISORY 15 MPH SPEED PLAQUE
-  123 +/-  
DISTANCE BETWEEN TRAFFIC CALMING MEASURES (CENTER TO CENTER) & DISTANCE BETWEEN TRAFFIC CALMING MEASURES AND END OF STREET

## NOTES:

- 1) NUMBER OF PARCELS IN AFFECTED AREA: 27
- 2) STREET(S) IN AFFECTED AREA: COLLIER DR, TILSON RD & CRESTA DR
- 3) EDGE OF TRAFFIC CALMING MEASURE NOT TO ENCROACH WITHIN 5' OF DRIVEWAY RETURNS

<b>DEKALB COUNTY TRANSPORTATION DIVISION TRAFFIC CALMING SECTION</b>	DRAWN BY: AE	SCALE: N.T.S.  Date: 2/8/2022	COLLIER DRIVE  DIST: 15 TH LAND LOT: 150  COMMISSION DISTRICTS: 3 & 7
	REVIEWED BY: AE		
	REVIEWED BY:		
	REVIEWED BY:		