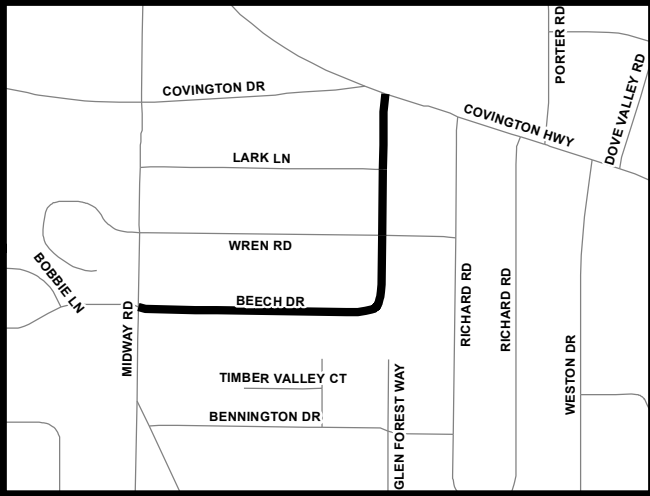
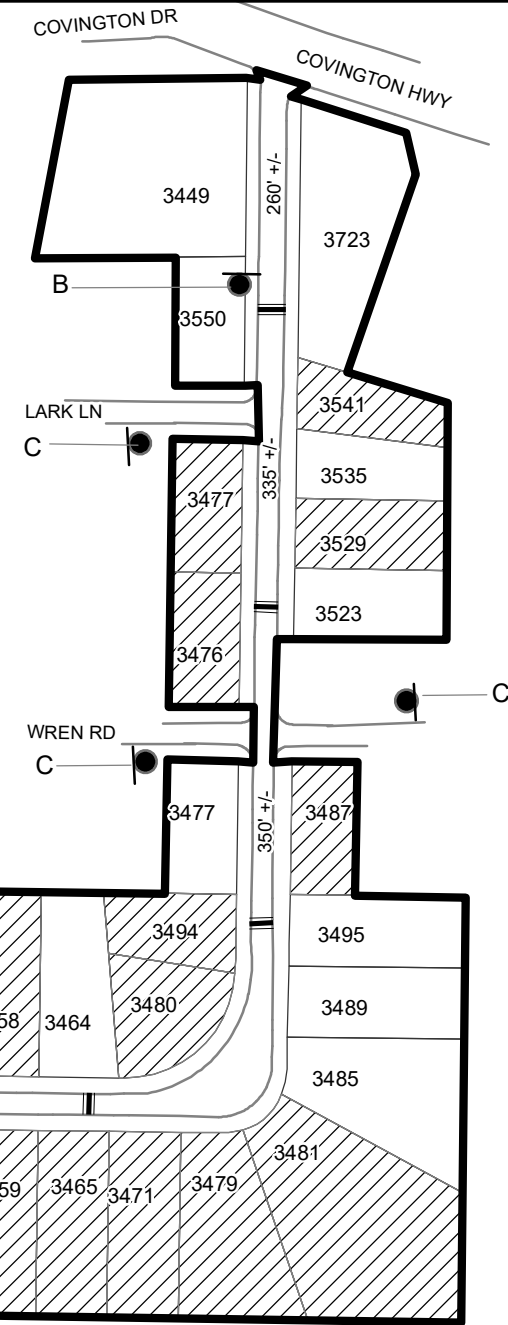


TRAFFIC CALMING DISTRICT 23-15-10



LEGEND

- AFFECTED AREA
- YES VOTES (32)
- SPEED TABLES (6)
- PARCEL BOUNDARY AND ADDRESS NUMBER
- TRAFFIC CALMING DISTRICT SIGNS
- SPEED HUMPS AHEAD SIGN AND ADVISORY 15 MPH SPEED PLAQUE
- SPEED HUMP AHEAD SIGN, CROSS STREET, AND ADVISORY 15 MPH SPEED PLAQUE
- 123 +/- DISTANCE BETWEEN TRAFFIC CALMING MEASURES (CENTER TO CENTER) & DISTANCE BETWEEN TRAFFIC CALMING MEASURES AND END OF STREET



NOTES:

- 1] NUMBER OF PARCELS IN AFFECTED AREA: 47
- 2] STREET(S) IN AFFECTED AREA: BEECH DR, WREN RD, LARK LN, COVINGTON DR & COVINGTON HIGHWAY
- 3] EDGE OF TRAFFIC CALMING MEASURE NOT TO ENCROACH WITHIN 5' OF DRIVEWAY RETURNS

DEKALB COUNTY TRANSPORTATION DIVISION TRAFFIC CALMING SECTION	DRAWN BY: AE	SCALE: N.T.S. Date: 12/19/2023	BEECH DRIVE
	REVIEWED BY: AE		DIST: 15TH LAND LOT: 219
	REVIEWED BY:	COMMISSION DISTRICTS: 3 & 7	
	REVIEWED BY:		