

Exhibit A

Appendix B (Property Description)

EXHIBIT "A"

REQUIRED RIGHT OF WAY

PROJECT NO.: STP00-0002-00(669), DEKALB COUNTY

P. I. NO.: 0002669

THE SYCAMORE SQUARE CONDOMINIUM ASSOCIATION, INC.

PARCEL NO.: 18

TAX PARCEL ID #15-246-02-069

All that tract or parcel of land lying and being in Land Lot 246 of the 15th Land District of DeKalb County, Georgia, being more particularly described as follows:

Beginning at a point 29.57 feet left of and opposite Station 347+02.39 on the centerline of Commerce Dr;

Thence proceeding N 89° 59' 52" E for a distance of 10.22 feet to a point 39.79 feet left of and opposite Station 347+02.52 on the centerline of Commerce Dr;

Thence proceeding S 0° 06' 30" W for a distance of 3.28 feet to a point 39.74 feet left of and opposite Station 347+05.79 on the centerline of Commerce Dr;

Thence proceeding S 38° 10' 22" W for a distance of 4.79 feet to a point 36.74 feet left of and opposite Station 347+09.52 on the centerline of Commerce Dr;

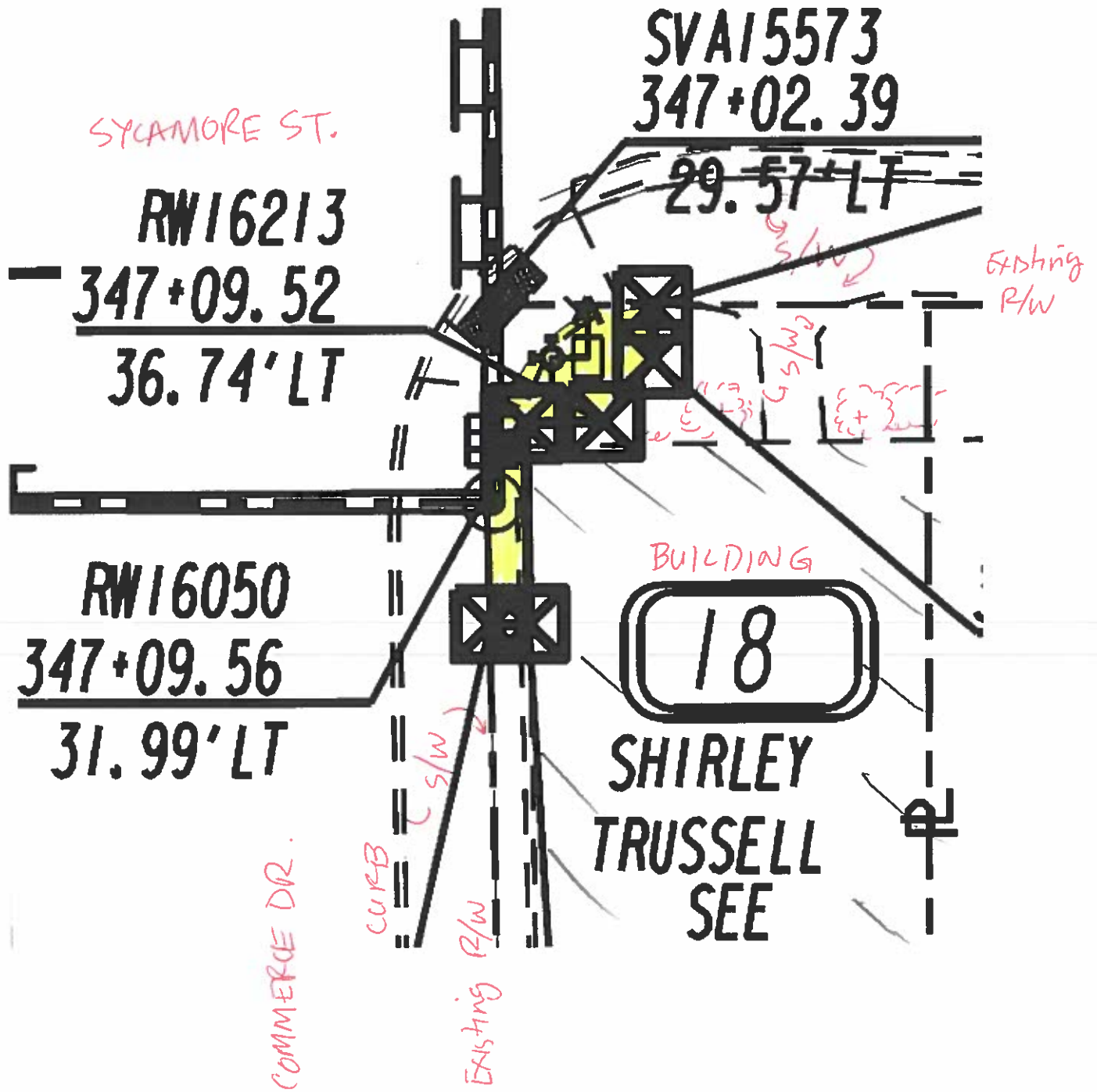
Thence proceeding S 88° 50' 12" W for a distance of 4.74 feet to a point 31.99 feet left of and opposite Station 347+09.56 on the centerline of Commerce Dr;

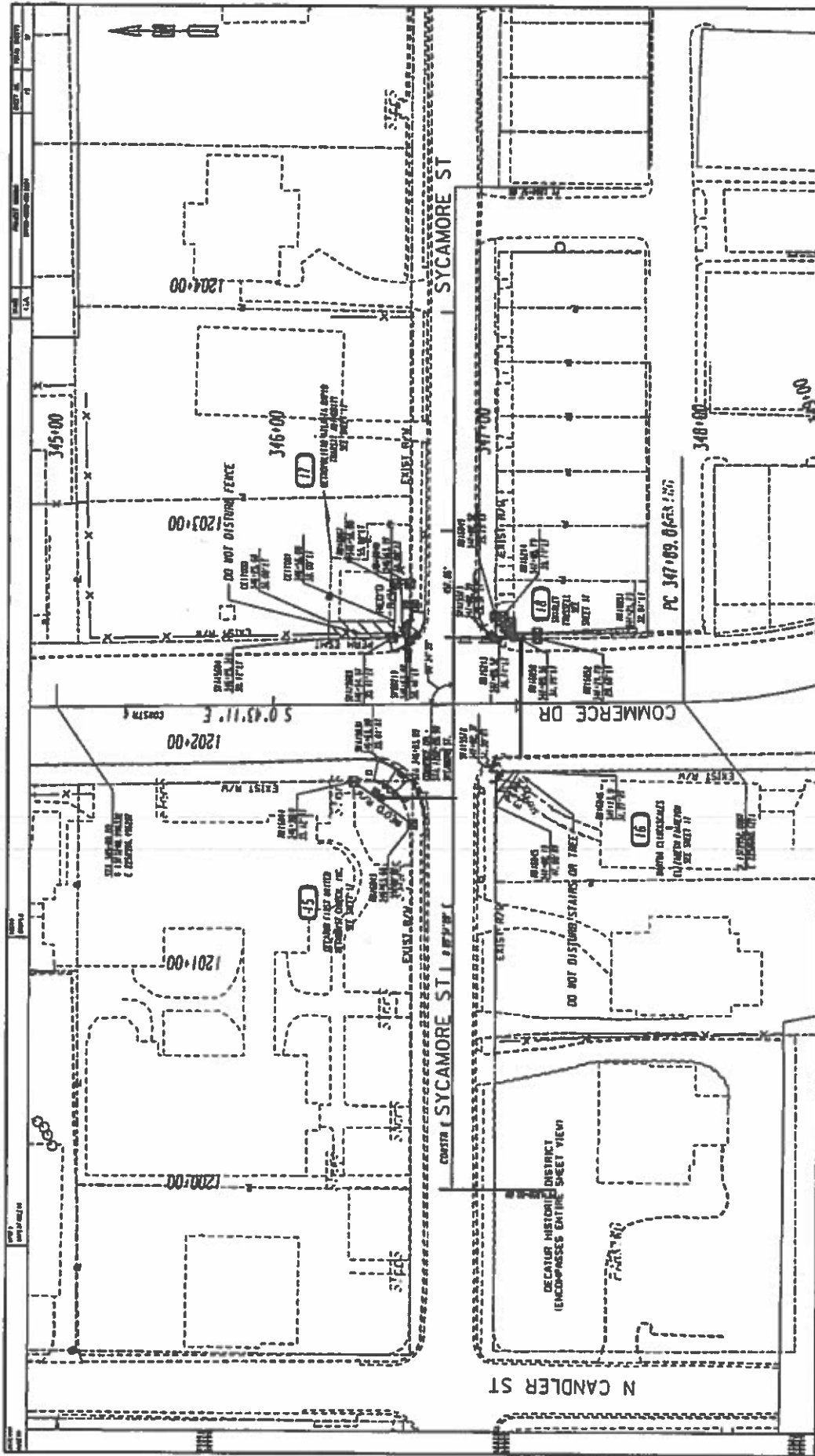
Thence proceeding S 0° 49' 41" E for a distance of 12.18 feet to a point 32.01 feet left of and opposite Station 347+21.73 on the centerline of Commerce Dr;

Thence proceeding N 90° 00' 00" W for a distance of 2.34 feet to a point 29.68 feet left of and opposite Station 347+21.70 on the centerline of Commerce Dr;

Thence proceeding N 1° 02' 51" W for a distance of 19.32 feet to a point 29.57 feet left of and opposite Station 347+02.39 on the centerline of Commerce Dr. back to the **POINT OF BEGINNING**, containing 95.13 square feet (0.002 acres) more or less.

Said described land being fee simple and shown on the attached Right of Way Maps, prepared by AECOM dated October 5, 2007 and revised April 19, 2019 is made a part hereof and by reference.





<p>PROVIDED AND EXISTING ARE THE RECEIVED FOR THE CONSTRUCTION LIMITS CONTRACT FOR CONSTRUCTION & MAINTENANCE OF STREETS CAROLINA POWER & LIGHT COMPANY</p>		
<p style="text-align: center;">AECOM</p> <p style="text-align: center;">1850 PINECREST BL FORT WORTH, TEXAS 76110</p>		
DATE	REVISIONS	AUTHOR
08/11/10	FOR THE DESIGN OF THE STREETS	AMG
07/11/10	FOR THE DESIGN OF THE STREETS	AMG
06/11/10	FOR THE DESIGN OF THE STREETS	AMG
05/11/10	FOR THE DESIGN OF THE STREETS	AMG
04/11/10	FOR THE DESIGN OF THE STREETS	AMG
03/11/10	FOR THE DESIGN OF THE STREETS	AMG
<p>STATE OF TEXAS DEPARTMENT OF TRANSPORTATION RIGHT OF WAY MAP PROJECT NO. ST-001-000-001(03)</p>		<p>LAND ACQUISITION DISTRICT NO. 13 DATE 08/22/10 SHEET 15 OF 37</p>

15

DECATOR FIRST UNITED
METHODIST CHURCH, INC.
SEE SHEET 15

PCT	STATION	BENCHMARK
854.8	244.8	300.0
854.8	244.8	300.0
854.8	244.8	300.0
854.8	244.8	300.0
854.8	244.8	300.0
854.8	244.8	300.0
854.8	244.8	300.0
854.8	244.8	300.0
854.8	244.8	300.0
854.8	244.8	300.0
854.8	244.8	300.0
854.8	244.8	300.0

16

MARTHA CLIRCKS CALES
&
ELIZABETH FAIBREIGH
SEE SHEET 15

PCT	STATION	BENCHMARK
854.8	244.8	300.0
854.8	244.8	300.0
854.8	244.8	300.0
854.8	244.8	300.0
854.8	244.8	300.0
854.8	244.8	300.0
854.8	244.8	300.0
854.8	244.8	300.0
854.8	244.8	300.0
854.8	244.8	300.0
854.8	244.8	300.0

17

MARTHA
SEE SHEET 15

PCT	STATION	BENCHMARK
854.8	244.8	300.0
854.8	244.8	300.0
854.8	244.8	300.0
854.8	244.8	300.0
854.8	244.8	300.0
854.8	244.8	300.0
854.8	244.8	300.0
854.8	244.8	300.0
854.8	244.8	300.0
854.8	244.8	300.0
854.8	244.8	300.0

17

MARTHA
SEE SHEET 15

PCT	STATION	BENCHMARK
854.8	244.8	300.0
854.8	244.8	300.0
854.8	244.8	300.0
854.8	244.8	300.0
854.8	244.8	300.0
854.8	244.8	300.0
854.8	244.8	300.0
854.8	244.8	300.0
854.8	244.8	300.0
854.8	244.8	300.0
854.8	244.8	300.0

18

SHIRLEY TRUSSELL
SEE SHEET 15

PCT	STATION	BENCHMARK
854.8	244.8	300.0
854.8	244.8	300.0
854.8	244.8	300.0
854.8	244.8	300.0
854.8	244.8	300.0
854.8	244.8	300.0
854.8	244.8	300.0
854.8	244.8	300.0
854.8	244.8	300.0
854.8	244.8	300.0
854.8	244.8	300.0

AECOM

DATE PREPARED BY: [NAME]
SCALE: [SCALE]
DRAWN BY: [NAME]
CHECKED BY: [NAME]

DATE REVISED: [DATE]
BY: [NAME]
FOR: [NAME]

DATE REVISED: [DATE]
BY: [NAME]
FOR: [NAME]

DATE REVISED: [DATE]
BY: [NAME]
FOR: [NAME]

STATE OF GEORGIA
DEPARTMENT OF TRANSPORTATION
PROJECT NO. STD-200-204
ROAD DISTRICT NO. 15
DATE: JANUARY 31, 1983
SHEET 17 OF 32