



Department of Purchasing and Contracting NON-COMPETITIVE PROCUREMENT REQUEST FORM

Requesting Department: Watershed Management
Department Contact Person: Julio Trinidad Telephone: 678 237-3812
Email: jtrinidad@dekalbcountyga.gov

Requisition Number: _____ Suggested Supplier: Compliance EnviroSystems, Inc.
Estimated Amount of Purchase: \$5,096,263.15
Detailed Description of the Goods or Services to be purchased: _____

~~Snapfinger Vault and Trunk sewer assessment and cleaning~~

☒ **Emergency** (For Emergency Requests, Please check this box and answer **all** questions below.)

1. Date and Time of Emergency Occurrence: _____

2. Please state the nature of the emergency posing a risk to public health, welfare, safety or resources:

Within the Snapfinger Basin, there are repeat Sanitary Sewer Overflows (SSOs) that occur due to infiltration/inflow (I/I) entering the system during a rain event. This contract will provide cleaning of debris in the sewer trunks to provide capacity and reduce SSO volumes.

3. State how the Estimated Amount was determined to be Fair and Reasonable (attach supporting documentation):

☐ **Sole Source** (Please check box and answer all of the following completely.)

1. Provide an explanation why the product, service or supplier requested is the only method that can satisfy the requirements. Please explain why alternatives are unacceptable. Be specific with regard to specification, features, characteristics, requirements, capabilities and compatibility. (Attach additional documents, if necessary):

2. Will this purchase obligate us to a particular vendor for future purchases? (Either in terms of maintenance that only this vendor will be able to perform and/or if we purchase this item, will we need more "like" items in the future to match this one?) Explain in detail.

3. Explain the impact to the County or Public if this request is not approved.

I hereby request that this non-competitive procurement request be approved for the purchase of the above stated work, material, equipment, commodity, or service.

Department Director (Typed/Printed Name) Reginald Wells Signature: Reginald Wells Digitally signed by Reginald Wells
Date: 2025.07.07 13:01:09 -0400 Date: 7/7/2025

Do Not Write Below – for the Department of Purchasing and Contracting Use Only

Procurement Agent (Typed/Printed Name) Denise Badillo Signature: Denise Badillo Date: 7/8/25

Procurement Manager (Typed/Printed Name) _____ Signature: Willie Moon Digitally signed by
Willie Moon
Date: 2025.07.21
07:58:25 -0400 Date: 7/21/25

☐ Approved ☐ Not Approved

Signature: _____, Director, Department of Purchasing and Contracting Date: _____

(Additional information, attach pages if required):

2. Within the Snapfinger Basin, there are 15 capacity related Priority Fix List (PFL) sites along the Shoal Creek Trunk, Cobb Fowler South Trunk, and Doolittle Trunk, that historically experience Sanitary Sewer Overflows (SSOs) during rain events. SSOs are shown to have adverse impacts on human health and the environment through direct contact of sanitary sewage to waters of the state, violating the Clean Water Act. The County has completed designs and a schedule in place to provide capacity and address these sites but due to the extensive nature of these projects, they are not scheduled to be complete until 2037. EPA/EPD are mandating that while these projects are constructed that the County perform any actions they can to reduce the size and occurrence of SSOs, including maintenance actions at risk of severe stipulated penalties. The County is committed to reducing the impact of SSOs at PFL sites to the community by assigning work to a contractor to Totally Integrated Sonar and CCTV Inspection Technique (TISCIT) the trunk sewers to see the amount of debris reducing the sewer capacity and then cleaning to remove the debris and restore the capacity to the trunk sewers. DWM does not have a current contract to complete this work and would like to issue an emergency contract to bring a vendor on board to perform the initial assessment/cleaning as well as budget to perform a second cleaning if a Severe Natural Condition wet weather event occurs. This emergency contract is temporary until the Major Gravity Sewer Capacity Restoration ITB is advertised and is anticipated to be awarded 1st Quarter 2026. Until the Major Gravity Sewer Capacity Restoration contract is awarded this emergency contract is necessary as it will be the only contracting vehicle to remove sediment from these trunk sewers and restore the full capacity of the existing sewer mains.

3. An Engineer's Estimate has been prepared using recent bids from the prior Major Gravity Sewer Capacity Restoration ITB that was withdrawn as well as the CD-FFAR contract. DWM solicited cost proposals from two vendors. The lowest cost proposal total from the two vendors is within 8% of the Engineer's Estimate total.











SNAPFINGER TRUNK SEWER CLEANING

A. SCOPE OF WORK

DeKalb County Department of Watershed Management's (DWM) Wastewater Collection and Transmission System (WCTS) includes a separate sanitary sewer system with pipes sized up to 72-inch diameter. The Snapfinger Advanced Wastewater Treatment Facility (AWTF), located in the southern portion of the County, receives and treats flow collected within the Snapfinger Basin. The flow enters the Snapfinger AWTF through two primary sewer trunk lines, the 60-inch Shoal Creek Trunk, collecting flow from the west side of the Snapfinger Basin and the 48-inch Snapfinger East Trunk collecting flow from the east side of the basin. DWM has developed projects to increase capacity within the AWTF, including the influent lift station, as well as the Shoal Creek Trunk. Until the projects are constructed, portions of the Shoal Creek Trunk, including an in system vault, as well as Snapfinger East Trunk need to be assessed and cleaned to ensure the County has the full capacity of the WCTS available. This contract will include

- Initial assessment/cleaning at start of contract
 - Total Integrated Sonar and CCTV Inspection Technique (TISCIT) of nearly 25,000 LF of 42-inch through 60-inch trunk sewer as shown in Figure 1.
 - Cleaning of trunk sewers as identified by TISCIT and verification of clean pipe through post cleaning TISCIT
 - Cleaning of debris within the vault located at the Snapfinger AWTF located at 15-130-s012
- Follow up assessment/cleaning after the occurrence of a large wet weather event, as determined by DWM. Anticipated to be no more than once/year
 - TISCIT of approximately 43,000 LF of 36-inch through 60-inch trunk sewer, includes highlighted trunk sewers in Figures 1 and 2.
 - Cleaning of trunk sewers as identified by TISCIT and verification of clean pipe through post cleaning TISCIT
 - Cleaning of debris within the vault located at the Snapfinger AWTF located at 15-130-s012
- Additional supporting technology as needed including but not limited to, easement clearing, bypass pumping, etc.

Attachment A contains a preliminary list of pipe assets for assessment and cleaning under this contract.

DWM has not mandated the use of any specific type of equipment or methods, however; the Contractor shall utilize the nationally recognize NASSCO published PACP standards for conducting all inspections. The Contractor shall have CCTV/Sonar equipment capable of off-road use and easement reels for off-road cleaning.

Figure 1

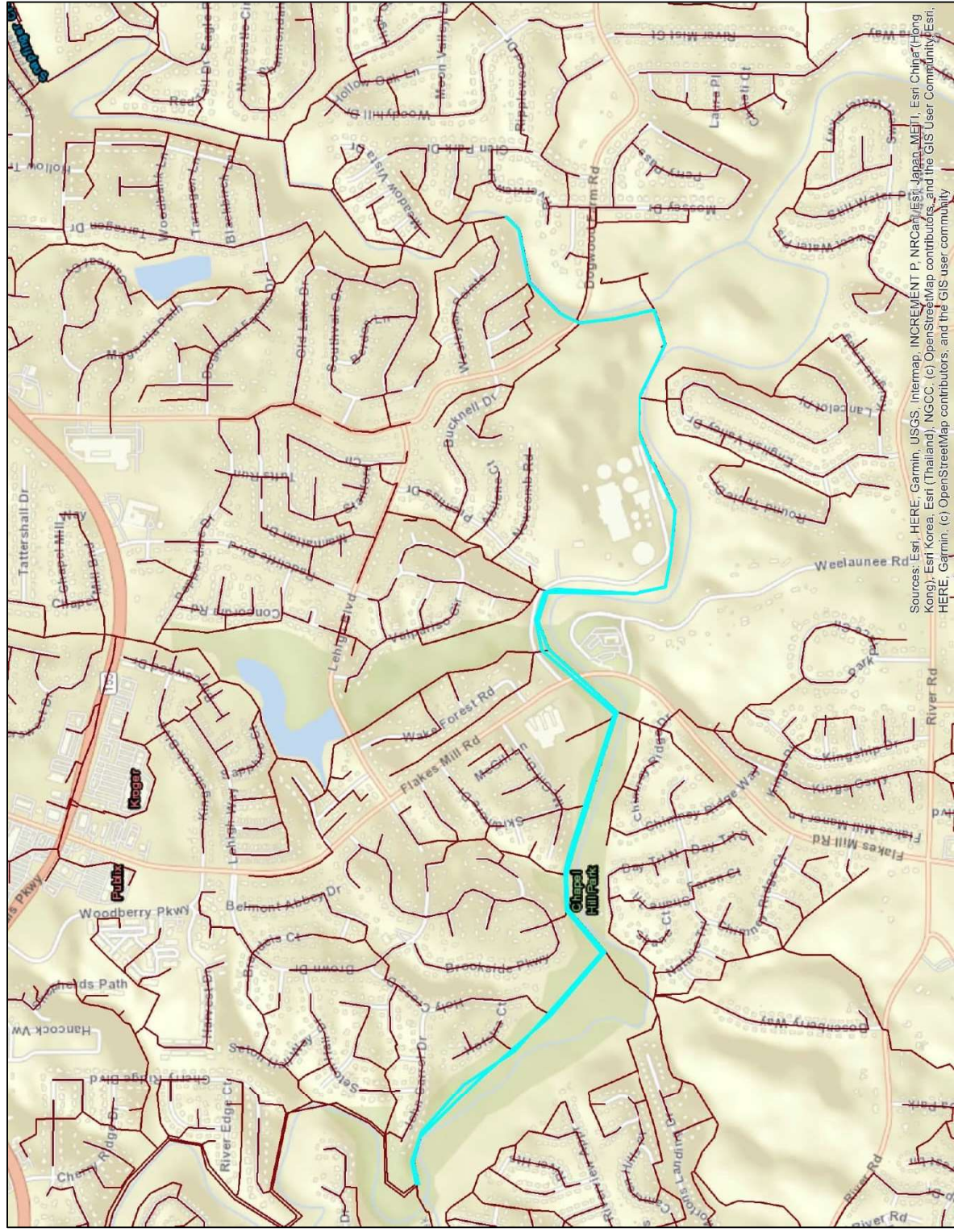
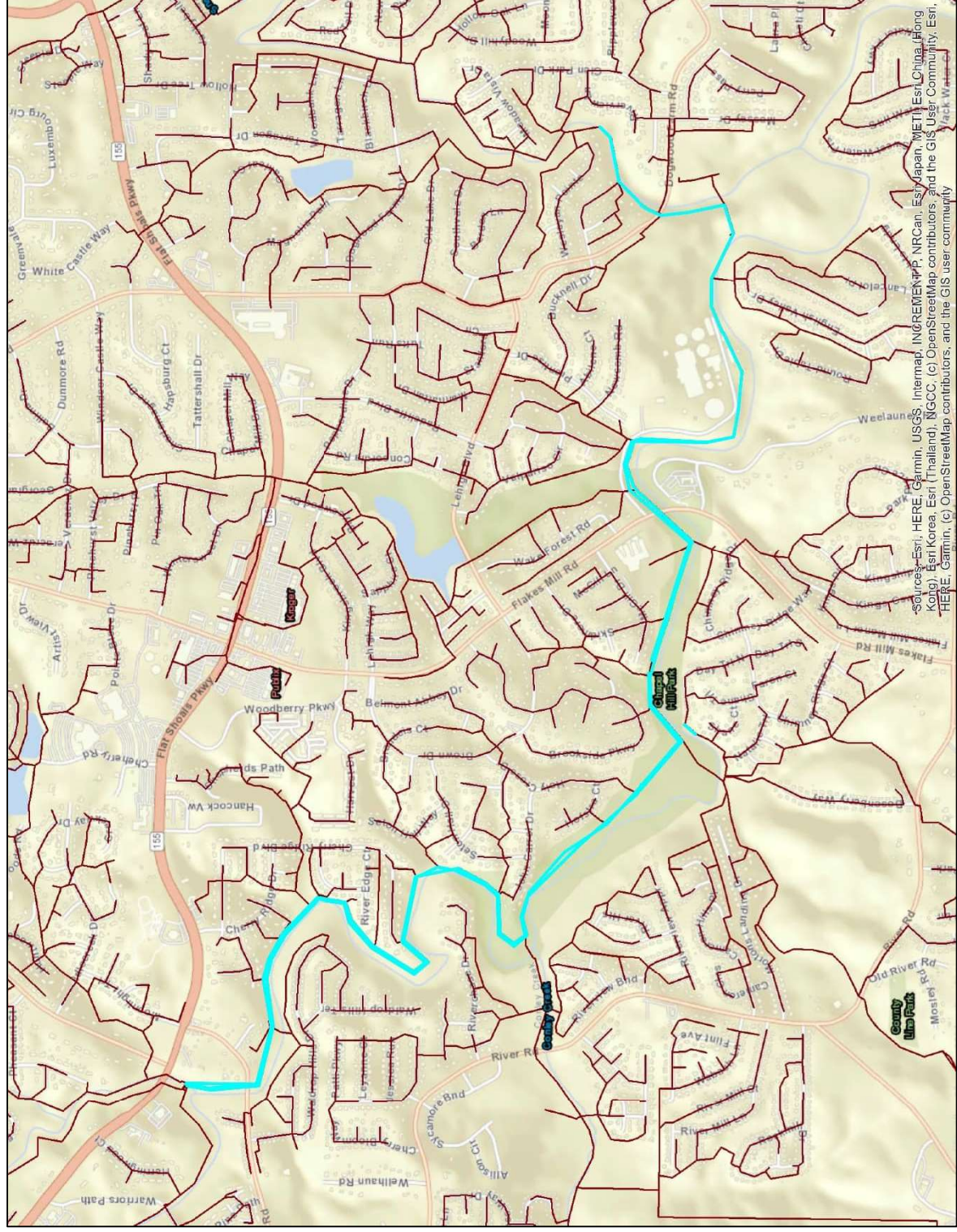


Figure 2



B. PROJECT LOCATION

The Work is primarily located within the Snapfinger Basin, south of Flat Shoals Parkway

C. QUALIFICATIONS AND EXPERIENCE OF KEY PERSONNEL

A. Experience:

1. The Project Manager and/or Supervisor of field crews shall be qualified to lead this project and must have a minimum of five (5) years of experience as a project manager on similar projects. The project manager shall have been in leadership roles on condition assessment and rehabilitation projects of similar scale.
2. The Data Manager shall have been in a leadership role on inventory and condition assessment projects of similar scale including three (3) years of experience in preparation of reports, management of field data collection, data analysis, data management and quality assurance.

B. Demonstration of qualifications and experience must be included with the bid submittal. Including:

1. Resumes and references
 - i. References must include a direct contact person and their contact information
2. Projects demonstrating the above qualifications and experience requirements.

D. PERFORMANCE TIME

Anticipated Substantial Completion – 365 Days after NTP

Anticipated Final Completion – 180 Days after Substantial Completion

E. WORK COORDINATION

1. The Contractor shall coordinate the Work with third parties (such as public utilities, other DeKalb County departments, and emergency service providers) in areas where such parties may have rights to underground property or facilities; and request maps or other descriptive information as to the nature and locations of such underground facilities or property.
2. The Contractor shall coordinate the Work with owners of private and public property where access is required for the performance of the work. The Contractor will be required to obtain authorized access from property owners and provide documentation to the Program Manager of such authorization as further

described in the Contract Documents.

3. The County, through the Program Manager:
 - a. will work with the Contractor to assign and schedule the work in a logical and efficient format.
 - i. All items in this contract shall be priced so each item can be assigned independently or combined with other items at the County's sole discretion in regard to both quantity and scope.
 - ii. There shall be no consideration of any claim for extra payment arising from a decision by the County in how it assigns, what it assigns and to whom it assigns potential work orders under this contract.
 - iii. No consideration of any claim or extra payment will be considered for extra payment arising from a decision to assign potential work items under this contract in any combination or in combination with another contract utilizing alternates by the Department of Watershed Management at the prices specified herein.

F. CONDITIONS AT THE SITES

1. The Contractor shall make all necessary investigations to determine the existence and location of underground utilities and surface impacts that may be caused due to the work.
2. The Contractor will be held responsible for any damage to and for maintenance and protection of existing utilities, structures, and personal property.
3. Nothing in these Contract Documents shall be construed as guarantee utilities are not located within the area of the operations.

Attachment A - Pipe List

Initial Assessment and Cleaning							SSO Location
US node ID	DS node ID	Asset ID	Length (ft)	Width (in)	Description		
15-034-s090	15-034-s089	15-034-s090__15-034-s089	96.8	48	Snapping East to Meadow Creek Path		4437 Wesleyan Pointe/ 4557 Meadow Creek Path
15-034-s089	15-034-s170a	15-034-s089__15-034-s170a	24.8	48	Snapping East to Meadow Creek Path		
15-034-s170a	15-034-s170c	15-034-s170a__15-034-s170c	16.1	48	Snapping East to Meadow Creek Path		
15-034-s170c	15-034-s170	15-034-s170c__15-034-s170	497.2	48	Snapping East to Meadow Creek Path		
15-034-s170	15-034-s073	15-034-s170__15-034-s073	590.7	48	Snapping East to Meadow Creek Path		
15-034-s073	15-034-s167	15-034-s073__15-034-s167	458.3	48	Snapping East to Meadow Creek Path		
15-034-s167	15-034-s165	15-034-s167__15-034-s165	73.3	48	Snapping East to Meadow Creek Path		
15-034-s165	15-034-s072	15-034-s165__15-034-s072	181.1	48	Snapping East to Meadow Creek Path		
15-034-s072	15-034-s174	15-034-s072__15-034-s174	370.3	48	Snapping East to Meadow Creek Path		
15-034-s174	15-031-s001	15-034-s174__15-031-s001	471.5	48	Snapping East to Meadow Creek Path		
15-031-s001	15-031-s002	15-031-s001__15-031-s002	386.2	54	Snapping East to Meadow Creek Path		
15-031-s002	15-031-s003	15-031-s002__15-031-s003	677.4	48	Snapping East to Meadow Creek Path		
15-031-s003	15-030-s027	15-031-s003__15-030-s027	719.9	48	Snapping East to Meadow Creek Path		
15-037-s100	15-037-s101	15-037-s100__15-037-s101	245.9	42	West Parallel Shoal Creek 1 from Confluence to Plant		
15-037-s101	15-037-s102	15-037-s101__15-037-s102	280.9	42	West Parallel Shoal Creek 1 from Confluence to Plant		
15-037-s102	15-037-s103	15-037-s102__15-037-s103	972.6	42	West Parallel Shoal Creek 1 from Confluence to Plant		
15-037-s103	15-037-s104	15-037-s103__15-037-s104	982.3	42	West Parallel Shoal Creek 1 from Confluence to Plant		
15-037-s104	15-036-s162	15-037-s104__15-036-s162	907.8	42	West Parallel Shoal Creek 1 from Confluence to Plant		
15-036-s162	15-036-s071	15-036-s162__15-036-s071	622.3	42	West Parallel Shoal Creek 1 from Confluence to Plant		
15-036-s071	15-036-s078	15-036-s071__15-036-s078	363.8	42	West Parallel Shoal Creek 1 from Confluence to Plant		
15-036-s078	15-036-s156	15-036-s078__15-036-s156	374.3	42	West Parallel Shoal Creek 1 from Confluence to Plant		
15-036-s156	15-036-s154	15-036-s156__15-036-s154	435.5	42	West Parallel Shoal Creek 1 from Confluence to Plant		
15-036-s154	15-036-s150	15-036-s154__15-036-s150	339.5	42	West Parallel Shoal Creek 1 from Confluence to Plant		
15-036-s150	15-029-s166	15-036-s150__15-029-s166	715.5	42	West Parallel Shoal Creek 1 from Confluence to Plant		
15-029-s166	15-035-s830	15-029-s166__15-035-s830	1000.1	42	West Parallel Shoal Creek 1 from Confluence to Plant		
15-035-s830	15-035-s836	15-035-s830__15-035-s836	64.6	42	West Parallel Shoal Creek 1 from Confluence to Plant		
15-035-s836	15-035-s835	15-035-s836__15-035-s835	280.8	42	West Parallel Shoal Creek 1 from Confluence to Plant		
15-035-s835	15-035-s834	15-035-s835__15-035-s834	247.8	42	West Parallel Shoal Creek 1 from Confluence to Plant		
15-035-s834	15-035-s833	15-035-s834__15-035-s833	77.8	42	West Parallel Shoal Creek 1 from Confluence to Plant		
15-035-s833	15-030-s012	15-035-s833__15-030-s012	912.2	54	West Parallel Shoal Creek 1 from Confluence to Plant		4124 Flakes Mill
15-030-s012	15-030-s011	15-030-s012__15-030-s011	390.9	60	West Parallel Shoal Creek 1 from Confluence to Plant		
15-030-s011	15-030-s008	15-030-s011__15-030-s008	339.3	54	West Parallel Shoal Creek 1 from Confluence to Plant		
15-037-s087	15-037-s084	15-037-s087__15-037-s084	179.4	54	East Parallel Shoal Creek 1 from Confluence to Plant		

Attachment A - Pipe List

US node ID	DS node ID	Asset ID	Length (ft)	Width (in)	Description	SSO Location
15-037-s084	15-037-s082	15-037-s084_15-037-s082	580.72	52	East Parallel Shoal Creek 1 from Confluence to Plant	
15-037-s082	15-037-s081	15-037-s082_15-037-s081	698.1	52	East Parallel Shoal Creek 1 from Confluence to Plant	
15-037-s081	15-037-s080	15-037-s081_15-037-s080	664.4	52	East Parallel Shoal Creek 1 from Confluence to Plant	
15-037-s080	15-036-s163	15-037-s080_15-036-s163	735.7	52	East Parallel Shoal Creek 1 from Confluence to Plant	
15-036-s163	15-036-s164	15-036-s163_15-036-s164	698.5	52	East Parallel Shoal Creek 1 from Confluence to Plant	
15-036-s164	15-036-s072	15-036-s164_15-036-s072	603	54	East Parallel Shoal Creek 1 from Confluence to Plant	
15-036-s072	15-036-s157	15-036-s072_15-036-s157	612.1	54	East Parallel Shoal Creek 1 from Confluence to Plant	
15-036-s157	15-036-s152	15-036-s157_15-036-s152	700.1	54	East Parallel Shoal Creek 1 from Confluence to Plant	
15-036-s152	15-036-s148	15-036-s152_15-036-s148	925.7	54	East Parallel Shoal Creek 1 from Confluence to Plant	
15-036-s148	15-035-s831	15-036-s148_15-035-s831	768.6	54	East Parallel Shoal Creek 1 from Confluence to Plant	
15-035-s831	15-035-s829	15-035-s831_15-035-s829	620.5	54	East Parallel Shoal Creek 1 from Confluence to Plant	
15-035-s829	15-035-s828	15-035-s829_15-035-s828	316.2	52	East Parallel Shoal Creek 1 from Confluence to Plant	
15-035-s828	15-030-s012	15-035-s828_15-030-s012	997.8	54	East Parallel Shoal Creek 1 from Confluence to Plant	
15-030-s012	15-030-s008	15-030-s012_15-030-s008	693.3	54	East Parallel Shoal Creek 1 from Confluence to Plant	
15-030-s008	15-030-s005	15-030-s008_15-030-s005	479.5	60	East Parallel Shoal Creek 1 from Confluence to Plant	
15-030-s005	15-030-w401	15-030-s005_15-030-w401	571.6	60	East Parallel Shoal Creek 1 from Confluence to Plant	
Additional Assessment and Cleaning						
15-070-s049	15-070-s045	15-070-s049_15-070-s045	425.4	36	West Parallel Shoal Creek 1 from Confluence to Plant	
15-070-s045	15-059-s007	15-070-s045_15-059-s007	512.1	36	West Parallel Shoal Creek 1 from Confluence to Plant	
15-059-s007	15-059-s008a	15-059-s007_15-059-s008a	394.2	36	West Parallel Shoal Creek 1 from Confluence to Plant	
15-059-s008a	15-059-s008	15-059-s008a_15-059-s008	404.5	36	West Parallel Shoal Creek 1 from Confluence to Plant	
15-059-s008	15-060-s105	15-059-s008_15-060-s105	622.8	36	West Parallel Shoal Creek 1 from Confluence to Plant	
15-060-s105	15-060-s011	15-060-s105_15-060-s011	282.2	36	West Parallel Shoal Creek 1 from Confluence to Plant	
15-060-s011	15-060-s159	15-060-s011_15-060-s159	389.6	36	West Parallel Shoal Creek 1 from Confluence to Plant	
15-060-s159	15-060-s021	15-060-s159_15-060-s021	617.3	36	West Parallel Shoal Creek 1 from Confluence to Plant	
15-060-s021	15-060-s062	15-060-s021_15-060-s062	347.5	36	West Parallel Shoal Creek 1 from Confluence to Plant	
15-060-s062	15-060-s063	15-060-s062_15-060-s063	681.8	36	West Parallel Shoal Creek 1 from Confluence to Plant	
15-060-s063	15-060-s064	15-060-s063_15-060-s064	656	36	West Parallel Shoal Creek 1 from Confluence to Plant	
15-060-s064	15-060-s065	15-060-s064_15-060-s065	246.7	36	West Parallel Shoal Creek 1 from Confluence to Plant	
15-060-s065	15-060-s066	15-060-s065_15-060-s066	433.6	36	West Parallel Shoal Creek 1 from Confluence to Plant	
15-060-s066	15-060-s067	15-060-s066_15-060-s067	839	36	West Parallel Shoal Creek 1 from Confluence to Plant	
15-060-s067	15-060-s152	15-060-s067_15-060-s152	302.9	36	West Parallel Shoal Creek 1 from Confluence to Plant	
15-060-s152	15-037-s096	15-060-s152_15-037-s096	230.1	36	West Parallel Shoal Creek 1 from Confluence to Plant	
15-037-s096	15-037-s097	15-037-s096_15-037-s097	652.6	42	West Parallel Shoal Creek 1 from Confluence to Plant	
15-037-s097	15-037-s098	15-037-s097_15-037-s098	503.3	42	West Parallel Shoal Creek 1 from Confluence to Plant	

Attachment A - Pipe List

US node ID	DS node ID	Asset ID	Length (ft)	Width (in)	Description	SSO Location
15-037-s098	15-037-s099	15-037-s098__15-037-s099	257.2	42	West Parallel Shoal Creek 1 from Confluence to Plant	
15-037-s099	15-037-s100	15-037-s099__15-037-s100	220.9	42	West Parallel Shoal Creek 1 from Confluence to Plant	
15-070-s013	15-059-s001	15-070-s013__15-059-s001	914.5	36	East Parallel Shoal Creek 1 from Confluence to Plant	
15-059-s001	15-059-s002	15-059-s001__15-059-s002	769.2	36	East Parallel Shoal Creek 1 from Confluence to Plant	
15-059-s002	15-060-s091	15-059-s002__15-060-s091	639.9	36	East Parallel Shoal Creek 1 from Confluence to Plant	
15-060-s091	15-060-s090	15-060-s091__15-060-s090	661	42	East Parallel Shoal Creek 1 from Confluence to Plant	
15-060-s090	15-060-s089	15-060-s090__15-060-s089	494.5	42	East Parallel Shoal Creek 1 from Confluence to Plant	
15-060-s089	15-060-s088	15-060-s089__15-060-s088	154.7	54	East Parallel Shoal Creek 1 from Confluence to Plant	
15-060-s088	15-060-s086	15-060-s088__15-060-s086	378.4	42	East Parallel Shoal Creek 1 from Confluence to Plant	
15-060-s086	15-060-s085	15-060-s086__15-060-s085	679.5	42	East Parallel Shoal Creek 1 from Confluence to Plant	
15-060-s085	15-060-s084	15-060-s085__15-060-s084	629.4	42	East Parallel Shoal Creek 1 from Confluence to Plant	
15-060-s084	15-060-s083	15-060-s084__15-060-s083	163.3	42	East Parallel Shoal Creek 1 from Confluence to Plant	
15-060-s083	15-060-s082	15-060-s083__15-060-s082	35.4	42	East Parallel Shoal Creek 1 from Confluence to Plant	
15-060-s082	15-060-s081	15-060-s082__15-060-s081	385.5	42	East Parallel Shoal Creek 1 from Confluence to Plant	
15-060-s081	15-060-s080	15-060-s081__15-060-s080	870.2	42	East Parallel Shoal Creek 1 from Confluence to Plant	
15-060-s080	15-037-s093	15-060-s080__15-037-s093	571.6	42	East Parallel Shoal Creek 1 from Confluence to Plant	
15-037-s093	15-037-s092	15-037-s093__15-037-s092	635.5	36	East Parallel Shoal Creek 1 from Confluence to Plant	
15-037-s092	15-037-s088	15-037-s092__15-037-s088	501.4	36	East Parallel Shoal Creek 1 from Confluence to Plant	
15-037-s088	15-037-s087	15-037-s088__15-037-s087	220.8	52	East Parallel Shoal Creek 1 from Confluence to Plant	



DEKALB COUNTY DWM

SNAPFINGER TRUNK SEWER CLEANING PROPOSAL

DATE :

13 June 2025

PROPOSED BY :

Compliance
EnviroSystems, LLC

**SOUND DATA.
SOLID CONCLUSIONS.**
CES-SES.COM



6/13/25

Julio Trinidad | Project Manager

DeKalb County Department of Watershed Management

4572 Memorial Dr. Decatur, GA 30032

jtrinidad@dekalbcountyga.gov | 678.237.3520

RE: Snapfinger Trunk Sewer Cleaning

Dear Julio,

Compliance EnviroSystems, LLC (CES), incorporated in January 1995 as a full-service professional sanitary and storm sewer evaluation firm, has, over the last 30 years, become one of the nation's leading professional wastewater evaluation companies. CES has provided solutions to our clients' wastewater problems through some of the most extensive collection and conveyance assessment programs in the United States. Our ultimate focus is objective and unbiased reporting on our clients' wastewater collection systems' current condition. We are committed to providing a comprehensive and complete range of sewer cleaning, monitoring, and inspection services.

CES is uniquely qualified to undertake the work contemplated by DeKalb County for the following reasons:

- CES has been competitively selected and ranked #1 for many complex multi-year SSES programs, including the City of Nashville, the City of Shreveport, and the City of Atlanta.
- CES's performance record of successfully evaluating more than 110,000,000 linear feet of collection sewers reflects our expertise, capabilities, and commitment to excellence.
- CES uses the latest SSES technology and equipment, employing a highly trained and motivated workforce that adheres to NASSCO's standards for coding.
- CES has successfully executed past projects in partnership with DeKalb County, including work at Snapfinger Basin.

At CES, we look forward to bringing our experience and capabilities to assist DeKalb County on this sewer evaluation project.

Respectfully Yours,

Von Gomel | Account Executive

Compliance EnviroSystems, LLC

8601 Six Forks Rd. (#400) Raleigh, NC 27615

vgomel@ces-sses.com | [225.337.9415](tel:225.337.9415)



EXPERIENCE & PROJECT APPROACH



Company background & experience

CES provides services to municipalities, wastewater utility contractors, and engineering firms. Our business model structure has allowed us to provide the highest level of field services, engineering and rehabilitation support, and data management and analysis to all clients with a minimum need for sub-consultation.

Our services provide pre-construction analysis without competing for any civil or environmental engineering services. CES does not represent, promote, provide, or perform any wastewater construction or rehabilitation processes. This independence results in unbiased objectivity in analyzing SSES data and recommending rehabilitation processes based on our clients' best interests.

Having worked on some of the largest Consent Decree mandated projects in the U.S., CES understands the importance of communicating with all stakeholders involved, including the residents in our communities. Just as important is our ability to perform the evaluation tasks in the most efficient, productive, and safest manner possible for all involved. A complete understanding of the milestones and goals and what is expected to be accomplished daily, weekly, and monthly throughout the project is of the utmost importance.



Project experience & references

The following experience chart lists several projects in which CES has successfully participated. Most of these project scopes are similar to the proposed work for Snapfinger Basin and demonstrate a wide range of CES services as a prime contractor.

 CES Project Name & Location	CCTV Inspection	Pipe Cleaning	Large-Diameter Pipe Cleaning	Manhole Inspection	Sonar/Multi-Sensor Inspection	Off-Road Work	Dye Flood Testing	Smoke Testing	Flow Monitoring (I/I)
SARP10 Memphis, TN	<input checked="" type="checkbox"/>	<input checked="" type="checkbox"/>	<input checked="" type="checkbox"/>	<input checked="" type="checkbox"/>	<input checked="" type="checkbox"/>	<input checked="" type="checkbox"/>	<input type="checkbox"/>	<input checked="" type="checkbox"/>	<input type="checkbox"/>
OSARP Major Gravity Sewer Capacity Restore DeKalb County, GA	<input checked="" type="checkbox"/>	<input checked="" type="checkbox"/>	<input checked="" type="checkbox"/>	<input checked="" type="checkbox"/>	<input checked="" type="checkbox"/>	<input checked="" type="checkbox"/>	<input type="checkbox"/>	<input type="checkbox"/>	<input type="checkbox"/>
Clean Water Shreveport Program Shreveport, LA	<input checked="" type="checkbox"/>	<input checked="" type="checkbox"/>	<input checked="" type="checkbox"/>	<input checked="" type="checkbox"/>	<input checked="" type="checkbox"/>	<input checked="" type="checkbox"/>	<input checked="" type="checkbox"/>	<input checked="" type="checkbox"/>	<input checked="" type="checkbox"/>
EBR Sewer/Storm Drain Maintenance (O&M) City-Parish of East Baton Rouge, LA	<input checked="" type="checkbox"/>	<input checked="" type="checkbox"/>	<input checked="" type="checkbox"/>	<input checked="" type="checkbox"/>	<input checked="" type="checkbox"/>	<input checked="" type="checkbox"/>	<input type="checkbox"/>	<input checked="" type="checkbox"/>	<input checked="" type="checkbox"/>
Annual Contract for Sanitary Sewer Repairs Atlanta, GA (In Progress)	<input checked="" type="checkbox"/>	<input checked="" type="checkbox"/>	<input checked="" type="checkbox"/>	<input type="checkbox"/>	<input checked="" type="checkbox"/>	<input type="checkbox"/>	<input type="checkbox"/>	<input type="checkbox"/>	<input type="checkbox"/>
Hattiesburg Consent-Decree (Multi-Phase) Hattiesburg, MS	<input checked="" type="checkbox"/>	<input checked="" type="checkbox"/>	<input type="checkbox"/>	<input checked="" type="checkbox"/>	<input type="checkbox"/>	<input checked="" type="checkbox"/>	<input type="checkbox"/>	<input checked="" type="checkbox"/>	<input checked="" type="checkbox"/>
JXN Water Staff Augmentation Jackson, MS	<input checked="" type="checkbox"/>	<input checked="" type="checkbox"/>	<input checked="" type="checkbox"/>	<input type="checkbox"/>	<input checked="" type="checkbox"/>	<input checked="" type="checkbox"/>	<input checked="" type="checkbox"/>	<input type="checkbox"/>	<input type="checkbox"/>
Jefferson Parish SSES Jefferson Parish, LA	<input checked="" type="checkbox"/>	<input checked="" type="checkbox"/>	<input checked="" type="checkbox"/>	<input checked="" type="checkbox"/>	<input type="checkbox"/>	<input checked="" type="checkbox"/>	<input checked="" type="checkbox"/>	<input checked="" type="checkbox"/>	<input checked="" type="checkbox"/>
Jackson, TN SSES Jackson, TN	<input checked="" type="checkbox"/>	<input checked="" type="checkbox"/>	<input checked="" type="checkbox"/>	<input checked="" type="checkbox"/>	<input checked="" type="checkbox"/>	<input checked="" type="checkbox"/>	<input type="checkbox"/>	<input checked="" type="checkbox"/>	<input type="checkbox"/>

OSARP & Major Gravity Sewer Line Restoration Projects

CLIENT & CONTRACT DURATION

DeKalb County, GA
2017-2023

PROJECT DESCRIPTION

Recruited by Benchmark Management, LLC, CES supported DeKalb County's OSARP and Major Gravity Sewer Line Restoration Projects as part of the county's SSES Consent Decree initiative. From 2017 to 2023, CES completed extensive condition assessments and cleaned critical large-diameter sewer infrastructure, including those at Snapfinger Basin. Our field crews helped DeKalb County reduce inflow and infiltration (I/I) and enhance the system's integrity, evaluating and cleaning over 1 million total LF of pipe ranging from 18" to 72" via advanced CCTV and Sonar technology.

CES handled the majority of the field execution, including difficult off-road access, coordination with all residents and stakeholders, and high-quality data deliverables. Additionally, over 1,000 SSES manhole inspections were completed over the course of this project. All field work and data deliverables were executed using NASSCO's PACP standards, and this project was completed safely, efficiently, and within DeKalb County's allotted schedule and scope.

CONTACT/REFERENCE

La'Shonda Mullins
Benchmark Management, LLC
lsnullins@dekalbcountyga.gov
404.838.5308

SARP10 Multi-Phase SSES Project

CLIENT & CONTRACT DURATION

City of Memphis, TN
2016-Present

PROJECT DESCRIPTION

CES has played a key role in the City of Memphis's SARP10 project, a long-term Consent Decree initiative led by Black & Veatch to assess and rehabilitate the city's sanitary sewer system. Since 2016, CES has delivered comprehensive SSES condition assessments that support rehabilitation and long-term planning. In the most recently completed phase of the project (June 2023 - April 2024), CES performed:

- 1.2 million LF of CCTV/cleaning (6"–18" pipe)
- 350,000 LF of TISCIT/cleaning (24"+ pipe)
- 900,000+ LF of smoke testing
- 5,500 manhole inspections

CES crews operated across multiple neighborhoods, addressing some of the program's most challenging logistics and access points with state-of-the-art equipment and technology. CES's responsiveness and experienced field teams have been critical in keeping the program on schedule across Phases 1-11. CES continues to support the City of Memphis by delivering high-quality inspection data that pinpoints defects using NASSCO's PACP coding standards. Each phase of the project was completed safely, efficiently, and within the client's allotted schedule and scope.

CONTACT/REFERENCE

Bently Green, P.E.
Black & Veatch
greenb2@bv.com
314.402.8359

Project approach & past Snapfinger Basin experience

CES is well-positioned to assess and clean the lines at Snapfinger Basin, having previously completed similar work at the site. Our understanding of the unique challenges associated with this location, including access limitations, water constraints, ROE's, large-diameter pipes, and significant debris, enables us to refine our approach for increased efficiency and productivity.



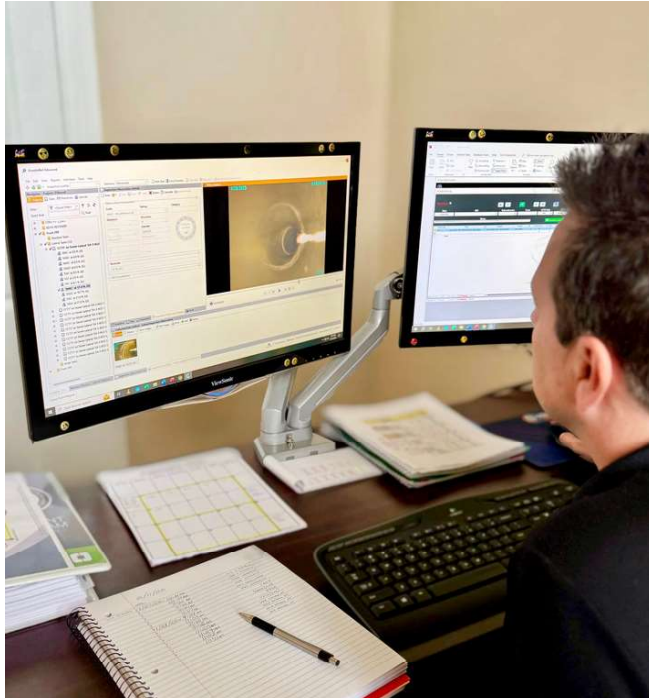
Our initial project steps included a comprehensive reconnaissance of each line segment to evaluate setup logistics, road-building needs, and clearing requirements. CES will deploy up to two TISCIT crews to perform the initial inspection phase, with each crew expected to complete between 1,000 and 1,500 linear feet per day.

Upon completion of these inspections, our team will have a clear understanding of which segments require cleaning, allowing us to proceed with targeted clearing and access enhancements. CES will allocate the appropriate number of field crews and equipment resources to maintain project momentum and meet established timelines, regardless of the cleaning volume required.

Cleaning operations will utilize specialized nozzles selected based on pipe size and the volume and nature of the debris. CES will deploy well-maintained, off-road capable equipment, including our large-diameter cleaning rig, combo trucks, and recycling trucks, to efficiently complete the Snapfinger Trunk Sewer Cleaning.

For the Snapfinger vault, a dedicated vacuum truck will be used to remove all debris from the pipe interior. This effort will be supported by a crew of 3-4 confined-space-trained personnel. Where manned entry is required, CES will strictly adhere to all safety protocols and implement all necessary confined-space safety equipment, including gas detectors, winches, tripods, safety harnesses, and air ventilation systems.

Data processing & management



CES believes that a quality product begins with quality data collection. Our data processing and management procedures ensure the accuracy, completeness, and integrity of all inspection data, which sets us apart in the industry. Our process involves collecting data via our standardized inspection platforms, thoroughly performing QA/QC checks, and preparing comprehensive final reports for our clients.

All CES technicians are NASSCO-certified (PACP, LACP, and MACP) and trained across various software platforms, allowing them to meet client-specific needs as quickly as possible, all while maintaining the highest levels of accuracy.



From verifying defect codes and inspection videos to running validation queries and tracking fieldwork progress through GIS maps, our team is thorough and detail-oriented. Data is securely backed up daily on RAID-based servers and off-site locations to ensure recovery and continuity. Final reports are thoroughly reviewed for quality and completeness before submission, with CES's VP of Data Management available to support any follow-up needs from the client.

Equipment & workforce allocation

CES is confident it has the equipment and workforce to ensure that our services are provided at the highest possible level. Field services are managed by technicians who are highly trained and experienced in CCTV evaluations, high-pressure cleaning, dye flood testing, flow monitoring, manhole condition assessment, smoke testing, TISCIT/multi-sensor inspection (Laser/Sonar/CCTV), Lead Service Line Inventory (LSLI), GPS and conventional survey data collection, advanced GIS mapping and asset management.



Equipment & workforce allocation

CES's project management personnel have an aggressive, hands-on approach to project management. The management team focuses daily on producing the highest-quality deliverables in our industry and providing deliverables on schedule. CES is committed to providing adequate resources to ensure this project stays on schedule and within budget. CES is confident in our ability to manage, inspect, and complete a project of this scope. CES owns and operates over \$50,000,000 in equipment. The chart below lists an overview of CES's equipment fleet.



Description	QTY	Model Years	Makes	Models
Combo Cleaning Truck	41	2014-2025	Peterbilt, Freightliner, International, Ford, Kenworth	VacCon, Vactor, VacAll
CCTV Inspection Units	40	2013-2024	Ford and Chevrolet	Cues, Ibak, EnviroSight
Acoustic Inspection Units	4	2012-2017	InfoSense	SL-RAT
Smoke Testing Machines	10	2010-2025	Honda and Briggs & Stratton	Various
Manhole Inspection Units	5	2019-2024	Various	Various
Sonar Inspection Units	2	2005-2022	Cobra	Various
Multi-Sensor Inspection Units	1	2022	Cues	Various
Flow Monitoring Equipment	70	2005-2018	Isco and Hach	Monitors and Rain Gauges
GPS Equipment	40	2020-2025	EMLID and Trimble	RS2+, RS3, R2
Support Trucks	85	2009-2025	Ford, Chevrolet, GMC	Various
Utility Trailers	53	2000-2025	Various	Various
Bypass Pumps	3	2002-2015	Pioneer	Various
Off-Road Inspection & Cleaning Equipment	14	1999-2022	Marsh Master, Yamaha, Polaris, Can Am, Voyager	Various
Easement Machines	12	1999 - 2024	Easement Machine	SECA and Underground
Data Processing Equipment	20	2022-2025	PC	GraniteXP, PipeTech, PipeLogix, WinCan, ArcGIS
Field Communications Equipment	35	2009-2017	Cobra and Motorola	Hand Held Radios

Safety approach



CES's policy is to protect our employees' safety and health by prioritizing the prevention of accidents and injuries, providing direction and support relative to safety procedures and job training, and minimizing – if not eliminating – job hazards. To maintain adequate safety programs, senior management must keep fully informed on health and safety.

Workers are strongly encouraged to help managers in these endeavors. Supervisors are directly responsible for our workers' safe work habits and job training.

Supervisors must enforce company rules and take immediate corrective action to eliminate hazardous conditions. They shall not permit safety to be sacrificed for any reason. Regardless of position within CES, each employee is expected to cooperate in all aspects of the company's safety and health program.

Each employee has a personal responsibility for his/her safety as well as the safety of coworkers. We will benefit if everyone is doing what is necessary to ensure workplace safety. Expediency is no substitute for quality and safety. Our company follows a stringent health and safety program and employs a certified safety officer. CES's health and safety manual can be provided after the Notice to Proceed.



KEY PROJECT PERSONNEL





Adam Howells

CCTV/Sonar/Multi-Sensor Project Manager

✉ ahowells@ces-sses.com

☎ 770.878.0737

📍 4450 Frederick Dr. SW Atlanta, GA 30336

Experience

Mr. Howells joined CES in January of 2011. Before beginning his career with CES, he worked in the sewer evaluation field starting in 2000, conducting sanitary sewer studies in Canada, England, Scotland, and cities and towns all over the United States. Mr. Howells currently serves as a Project Manager. He is proficient in all aspects of sewer evaluation techniques, including closed-circuit television, high-pressure cleaning, easement cleaning, smoke testing, manhole inspections, dye flooding, flow isolations, data management, and sonar surveying. Adam has extensive experience in unique Sonar surveys. Adam has completed off-road and hard-to-access pipe surveys across the United States, including Memphis, Atlanta, South Carolina, Alabama, and Georgia.

Professional Qualifications

NASSCO certified for PACP | Confined Space Certified | SCBA Certified |
OSHA Certified | CPR/First Aid Certified

Project Experience & Affiliations

DeKalb County, GA	Project Manager OSARP Sewer Assessment & Rehabilitation Program + Major Gravity Sewer Line Capacity Restoration Projects Sonar, multi-sensor inspections (MSI), CCTV/cleaning of millions of LF of 6"-60" pipe, smoke testing, manhole inspections, and other SSES services
Atlanta, GA	Project Manager Annual Contract for Sanitary Sewer Repairs Project Sonar, multi-sensor inspection (MSI), and CCTV/cleaning of 100,000+ LF of 6"-90" pipe
Sanford, NC	Project Manager Dry Creek Basin Sewer Investigation Project Multi-sensor inspection (MSI), Sonar, CCTV/cleaning and smoke testing of 25,000+ LF of 12" pipe
Dallas, TX	Project Manager CCTV & Sonar Inspection of 44,400 LF in 24"-36" pipe
Nashville, TN	Project Manager CCTV & Sonar Inspection of 152,500 LF in 24"-198" pipe + other SSES services
New Castle, DE	Project Manager CCTV & Sonar Inspection of nearly 30,000 LF in 18"-72" pipe
Macon, GA	Project Manager CCTV & Sonar Inspection of 50,000 LF in 21"-60" pipe + manhole inspections, easement cleaning, data management, flow monitoring, & smoke testing of Echeconnee, Tobesofkee & Riverside basins
Memphis, TN	Project Manager Multi-Phase SSES Evaluation (Sonar, large-diameter, CCTV/cleaning, off-road and easement assessments, etc.) SARP10 Loosahatchie Interceptors Large-Diameter Evaluation & Cleaning (CCTV & Sonar Inspection of over 75,000 LF in 36"-108" pipe + other SSES services)



Ryan Cefalu

VP of Technology & Data Management

✉ rcefulu@ces-sses.com

☎ 225.279.1566

📍 1401 Seaboard Dr. Baton Rouge, LA 70810

Education

BA, General Studies – Southeastern Louisiana University, December 2002

Experience

Ryan Cefalu serves as the Vice President of Technology and Data Management at CES, where he has dedicated over 24 years to leading data management and IT initiatives. His leadership ensures that CES delivers high-quality results to clients by aligning technological solutions with corporate objectives.

Mr. Cefalu's role leading the Data Management department focuses on managing a team of technicians that process and review 100% of the data collected during field operations, ensuring that the data collected is accurate, complies with job specifications, and is able to meet the needs of clients. By overseeing both data management and IT operations, Mr. Cefalu's unique problem-solving skills enable the development and integration of solutions, streamlined workflows, enhanced deliverable quality, and continued operational excellence.

His ability to solve complex challenges, devise forward-looking solutions, and implement strategies has helped to establish CES as an industry leader. He collaborates closely with other members of the executive team to ensure all technological initiatives are fully aligned with business goals, thereby supporting growth, efficiency, and client satisfaction. Additionally, Mr. Cefalu is committed to mentoring and leading his team, creating a culture of excellence, continuous learning, and high performance.

Key Areas of Expertise: Strategy Development & Implementation | Solutions Design & Process Improvement | Data Management & Quality Assurance

Professional Qualifications

PACP | MACP | LACP | Confined Space Certified | Microsoft Access Certified

Project Experience & Affiliations

City of Chesnee, SC Data Management | Oversaw data collection and management for CCTV, smoke testing and manhole inspections using custom-designed applications and GIS tools; developed report designs for client delivery, configured an online map for data capture, and oversaw all data management processes

DeKalb County, GA Data Management | Sewer Assessment & Rehabilitation Program (OSARP): Created a custom database that ensured data delivery met contractual specifications and oversaw QA/QC and data management

City of Baton Rouge, LA Data Management | Oversaw data management of CCTV inspections & smoke testing of 2.5+ million feet of sanitary sewer, over 100k feet of lateral line inspections, and over 7k manhole condition assessments



Von Gomel

Account Executive

✉ vgomel@ces-sses.com

☎ 225.337.9415

📍 8601 Six Forks Rd. #400 Raleigh, NC 27615

Education

BA, Business – Mississippi State University, 2003

Experience

Von Gomel has been an integral part of the CES team since 2015 and has worked in the wastewater industry since 2005. He is responsible for business development and client management in Georgia and the Carolinas. Von has a wealth of experience in all aspects of sanitary sewer condition assessment, Sonar evaluations, CCTV, difficult-to-access evaluations, pipeline rehabilitation, manhole rehabilitation, disaster recovery, project management and more.

During his tenure at CES, Von has been directly responsible for overseeing the successful completion of hundreds of projects. Von is dedicated to assisting clients in the front-end development of projects, technical assistance, and management of all aspects of SSES.

Professional Qualifications

Mr. Gomel holds MUTCD traffic certifications as well as NASSCO PACP, MACP, and LACP certifications. Additionally, he holds Confined Space Entry and American Red Cross CPR certifications.

Project Experience & Affiliations

DeKalb County, GA

Project Manager/Client Contact | OSARP & Rehabilitation Program + Major Gravity Sewer Line Capacity Restoration Projects (Sonar, large-diameter, CCTV/cleaning, smoke testing, manhole inspections, and other evaluation methods).

Memphis, TN

Project Manager | SARP10 Multi-Phase SSES Evaluation (Sonar, large-diameter, CCTV/cleaning, smoke testing, and other evaluation methods).

North Carolina (Statewide, Ongoing)

Client Contact | Phases 1-3 | AQUA Statewide NC Lead Service Line Inventory (4700+ addresses).

Landis, NC

Client Contact | Landis CCTV Project (CCTV inspections/cleaning, heavy cleaning (as needed), manhole inspections, and smoke testing).

Southport, NC

Client Contact | Southport SSES / Flow Study Project (CCTV inspections/cleaning, manhole inspections, flow monitoring, and smoke testing).



Josh Hardy, P.E.

President

✉ jhardy@ces-sses.com

☎ 225.279.1153

📍 1401 Seaboard Dr. Baton Rouge, LA 70810

Education

BS, Civil Engineering – Louisiana State University, 1997

Experience

With over 30 years of experience in SSES, Josh Hardy brings unmatched technical knowledge and leadership to CES's projects. As CES President, he is actively involved in day-to-day operations and provides guidance to managers and field crews. Josh's project responsibilities include overseeing data management, QA/QC, and offering project support through every phase.

Josh has extensive expertise in evaluation methods such as flow monitoring, CCTV inspection, difficult-to-access evaluations, smoke testing, high-pressure cleaning, dye flood testing, manhole inspections, and rehabilitation recommendations. He is proficient in PACP/LACP/MACP standards and ensures data management deliverables are of the highest quality.

Throughout his career at CES, Josh has served in several leadership roles, including Project Manager, Area Manager, Vice President, and now President. He has personally managed projects totaling over 10 million LF of pipe and has worked closely with our clients across the United States.

Professional Qualifications

Registered Professional Engineer in the State of Louisiana

Project Experience & Affiliations

Macon, GA Overall SSES Management | CCTV inspections, pipe cleaning, manhole inspections, data management, flow monitoring, smoke testing & rehab recommendations of Echeconnee, Tobesofkee & Riverside basins

Memphis, TN Project Engineer | Complete Multi-Phase SSES Evaluation & SARP10

East Baton Rouge Parish, LA Project Manager | Ongoing preventive maintenance & asset management

City of Shreveport, LA Project Engineer | SSES Phase I-VIII

Southport, NC Project Engineer | SSES / Flow Study Project

Spartanburg, NC Project Engineer | Spartanburg Chesnee Collection System Project



Tim Mack

Safety Director

✉ tmack@ces-sses.com

📍 1401 Seabord Dr. Baton Rouge, LA 70810

☎ 225.769.2933

Education

Southeastern Louisiana University | 1985 – 1987

Louisiana State University Continuing Education – Leadership | 2009

Louisiana State University Continuing Education – Customer Relations | 2009

Experience

Tim Mack, CES's Safety Director, joined Compliance EnviroSystems, LLC in 2017. He is responsible for overseeing all project managers for CES throughout the southeast and along the eastern seaboard of the United States. Mr. Mack manages his projects with the utmost professionalism and prides himself in creating a safe working environment for all CES employees. He conducts frequent on-site job safety audits to ensure all CES safety standards are being upheld. He also monitors our weekly safety meetings and regularly inspects all equipment to ensure it's in safe working condition.

Professional Certifications

- OSHA 10 General Industry
- OSHA 30 Construction Safety
- NCCER 40 Field Safety
- Power Safe Trained & Certified
- ATSSA Traffic Control Technician & Traffic Control Supervisor
- National Safety Council Member
- OSHA Trained & Certified Flagger & Traffic Control Safety Instructor
- OSHA Trained & Certified Confined Space Instructor
- DOT Reasonable Suspicion Certified
- HSI Trained & Certified First Aid, CPR & AED Level 1 Instructor

COST PROPOSAL



UNIT PRICE BID FORM

2025 Snapfinger Trunk Assessment and Cleaning

Bid Item No.	Description	Total Bid Quantity	Unit	Unit Price	Extended Total Bid Price
Division 1 - General Requirements					
Sonar/TISCIT Inspection					
01510-01	Sonar/TISCIT Survey > 24" and ≤ 36" Diameter Pipe	10,500	LF	\$8.00	\$84,000.00
01510-02	Sonar/TISCIT Survey > 36" Diameter Pipe	58,000	LF	\$8.00	\$464,000.00
Sewer Flow Control					
01520-01	Bypass Pumping ≥ 36" Diameter Pipe with Flow >25% and <50%	1,000	LF	\$252.01	\$252,010.00
01520-02	Bypass Pumping ≥ 36" Diameter Pipe with Flow >50%	1,000	LF	\$416.30	\$416,300.00
01520-03	Bypass Pumping Maintenance & Operation (≥36")	80	HR	\$1,500.00	\$120,000.00
Manhole Adjustments					
02607-01	Manhole Cone Removal and Replacement	20	EA	\$7,420.00	\$148,400.00
SANITARY SEWER CLEANING					
02956-01	Cleaning & Verification ≤15% Average Cross Section Area Blockage, 24"-36" Diameter	2,050	LF	\$41.95	\$85,997.50
02956-02	Cleaning & Verification >15% - 25% Average Cross Section Area Blockage, 24"-36" Diameter	2,050	LF	\$48.12	\$98,646.00
02956-03	Cleaning & Verification >25% Average Cross Section Area Blockage, 24"-36" Diameter	1,050	LF	\$54.18	\$56,889.00
02956-04	Cleaning & Verification ≤15% Average Cross Section Area Blockage, >36" Diameter	23,200	LF	\$43.12	\$1,000,384.00
02956-05	Cleaning & Verification >15% - 25% Average Cross Section Area Blockage, >36" Diameter	12,000	LF	\$49.14	\$589,680.00
02956-06	Cleaning & Verification >25% Average Cross Section Area Blockage, >36" Diameter	12,000	LF	\$59.17	\$710,040.00
02956-07	Cleaning & Verification of Ancillary Structures	80	HR	\$674.00	\$53,920.00
Division 2 - Site Work					
Access Route and Easement Clearing					
02110-01	Easement Access Road-12' Width, Installation and Removal	1,000	LF	\$80.50	\$80,500.00
02110-02	Easement Access Road-12' Width, Installation only	1,000	LF	\$57.50	\$57,500.00
02110-03	Easement Clearing, Light (Bush Hog)	2,500	SY	\$11.50	\$28,750.00
02110-04	Easement Clearing, Medium (Bush Hog & Chipper)	2,500	SY	\$17.25	\$43,125.00
02110-05	Easement Clearing, Heavy (Timbering Equipment)	100	Caliper Inch	\$28.75	\$2,875.00
Site Restoration & Erosion Control					
02273-01	Riprap, Type II (Installed)	100	SY	\$115.00	\$11,500.00
02273-02	Riprap, Type III (Installed)	100	SY	\$109.25	\$10,925.00
02276-06	Temporary Creek Crossing (36" diameter)	400	LF	\$316.25	\$126,500.00
02276-07	Temporary Creek Crossing (42" diameter)	400	LF	\$373.75	\$149,500.00
02485-01	Sodding to Match Existing	100	SY	\$17.25	\$1,725.00
02486-01	Seeding to Match Existing	100	SY	\$7.00	\$700.00
02542-01	Silt Fence - Type C, Single Row	2,000	LF	\$9.20	\$18,400.00
02542-02	Silt Fence - Type C, Double Row	1,000	LF	\$20.70	\$20,700.00
SUBTOTAL:					\$4,632,966.50
1020	Owner's Allowance (10% of the Subtotal Amount)	1	Allowance	\$463,296.65	\$463,296.65
TOTAL:					\$5,096,263.15

INSURANCE





CERTIFICATE OF LIABILITY INSURANCE

DATE (MM/DD/YYYY)

6/12/2025

THIS CERTIFICATE IS ISSUED AS A MATTER OF INFORMATION ONLY AND CONFERS NO RIGHTS UPON THE CERTIFICATE HOLDER. THIS CERTIFICATE DOES NOT AFFIRMATIVELY OR NEGATIVELY AMEND, EXTEND OR ALTER THE COVERAGE AFFORDED BY THE POLICIES BELOW. THIS CERTIFICATE OF INSURANCE DOES NOT CONSTITUTE A CONTRACT BETWEEN THE ISSUING INSURER(S), AUTHORIZED REPRESENTATIVE OR PRODUCER, AND THE CERTIFICATE HOLDER.

IMPORTANT: If the certificate holder is an **ADDITIONAL INSURED**, the policy(ies) must have **ADDITIONAL INSURED** provisions or be endorsed. If **SUBROGATION** IS **WAIVED**, subject to the terms and conditions of the policy, certain policies may require an endorsement. A statement on this certificate does not confer rights to the certificate holder in lieu of such endorsement(s).

PRODUCER Arthur J. Gallagher Risk Management Services, LLC 4041 Essen Ln Ste 400 Baton Rouge LA 70809	CONTACT NAME: Stacy Becker PHONE (A/C, No, Ext): 225-336-5312 E-MAIL ADDRESS: stacy_becker@ajg.com	FAX (A/C, No): 225-336-4536
INSURER(S) AFFORDING COVERAGE		NAIC #
INSURER A: National Union Fire Ins Co Pittsburgh PA		19445
INSURER B: New Hampshire Insurance Co.		23841
INSURER C: Travelers Property Casualty Co of America		25674
INSURER D: Endurance American Specialty Ins Co		41718
INSURER E: Westfield Specialty Insurance Company		16992
INSURER F: Westchester Fire Insurance Co		10030

COVERAGES**CERTIFICATE NUMBER:** 1508132202**REVISION NUMBER:**

THIS IS TO CERTIFY THAT THE POLICIES OF INSURANCE LISTED BELOW HAVE BEEN ISSUED TO THE INSURED NAMED ABOVE FOR THE POLICY PERIOD INDICATED. NOTWITHSTANDING ANY REQUIREMENT, TERM OR CONDITION OF ANY CONTRACT OR OTHER DOCUMENT WITH RESPECT TO WHICH THIS CERTIFICATE MAY BE ISSUED OR MAY PERTAIN, THE INSURANCE AFFORDED BY THE POLICIES DESCRIBED HEREIN IS SUBJECT TO ALL THE TERMS, EXCLUSIONS AND CONDITIONS OF SUCH POLICIES. LIMITS SHOWN MAY HAVE BEEN REDUCED BY PAID CLAIMS.

INSR LTR	TYPE OF INSURANCE	ADDL SUBR INSD WVD	POLICY NUMBER	POLICY EFF (MM/DD/YYYY)	POLICY EXP (MM/DD/YYYY)	LIMITS
A	<input checked="" type="checkbox"/> COMMERCIAL GENERAL LIABILITY <input type="checkbox"/> CLAIMS-MADE <input checked="" type="checkbox"/> OCCUR GEN'L AGGREGATE LIMIT APPLIES PER: <input type="checkbox"/> POLICY <input checked="" type="checkbox"/> PRO-JECT <input type="checkbox"/> LOC <input type="checkbox"/> OTHER:		GL9566098	4/1/2025	4/1/2026	EACH OCCURRENCE \$ 2,000,000 DAMAGE TO RENTED PREMISES (Ea occurrence) \$ 500,000 MED EXP (Any one person) \$ 25,000 PERSONAL & ADV INJURY \$ 2,000,000 GENERAL AGGREGATE \$ 4,000,000 PRODUCTS - COMP/OP AGG \$ 4,000,000 \$
A	<input checked="" type="checkbox"/> AUTOMOBILE LIABILITY <input checked="" type="checkbox"/> ANY AUTO <input type="checkbox"/> OWNED AUTOS ONLY <input type="checkbox"/> SCHEDULED AUTOS <input checked="" type="checkbox"/> HIRED AUTOS ONLY <input checked="" type="checkbox"/> NON-OWNED AUTOS ONLY		CA5425488	4/1/2025	4/1/2026	COMBINED SINGLE LIMIT (Ea accident) \$ 2,000,000 BODILY INJURY (Per person) \$ BODILY INJURY (Per accident) \$ PROPERTY DAMAGE (Per accident) \$ \$
TIM C	<input checked="" type="checkbox"/> UMBRELLA LIAB <input checked="" type="checkbox"/> OCCUR <input checked="" type="checkbox"/> EXCESS LIAB <input type="checkbox"/> CLAIMS-MADE DED RETENTION \$		CUP-1S019364-25-NF XSL-00008NK-03 G48762098 001	4/1/2025 4/1/2025 4/1/2025	4/1/2026 4/1/2026 4/1/2026	EACH OCCURRENCE \$ 15,000,000 AGGREGATE \$ 15,000,000 \$
B	WORKERS COMPENSATION AND EMPLOYERS' LIABILITY ANY PROPRIETOR/PARTNER/EXECUTIVE OFFICER/MEMBER EXCLUDED? (Mandatory in NH) If yes, describe under DESCRIPTION OF OPERATIONS below	Y / N <input checked="" type="checkbox"/> N / A	WC72113225	4/1/2025	4/1/2026	<input checked="" type="checkbox"/> PER STATUTE <input type="checkbox"/> OTH-ER E.L. EACH ACCIDENT \$ 2,000,000 E.L. DISEASE - EA EMPLOYEE \$ 2,000,000 E.L. DISEASE - POLICY LIMIT \$ 2,000,000
D	Pollution Liability Professional Coverage		PNV10015166704 PNV10015166704	4/1/2025 4/1/2025	4/1/2026 4/1/2026	Per Occ/ Aggregate 5,000,000 Per Claim 2,000,000 Annual Aggregate 4,000,000

DESCRIPTION OF OPERATIONS / LOCATIONS / VEHICLES (ACORD 101, Additional Remarks Schedule, may be attached if more space is required)

Policy # UM00069099MA54A

Effective: 04/01/25 - 04/01/26

Carrier: XL Specialty Insurance Company

Inland Marine - Leased/Rented Equipment \$500,000; \$500,000 per item; \$2,500 Deductible except Vacuum Units \$5,000; Blanket Loss Payee as their interest may appear.

Subject to referenced Policy Terms, Conditions, Exclusions if required by written contract or agreement.

See Attached...

CERTIFICATE HOLDER**CANCELLATION**DeKalb County
Department of Watershed Management
4572 Memorial Dr.
Decatur GA 30032
US

SHOULD ANY OF THE ABOVE DESCRIBED POLICIES BE CANCELLED BEFORE THE EXPIRATION DATE THEREOF, NOTICE WILL BE DELIVERED IN ACCORDANCE WITH THE POLICY PROVISIONS.

AUTHORIZED REPRESENTATIVE

© 1988-2015 ACORD CORPORATION. All rights reserved.



ADDITIONAL REMARKS SCHEDULE

Page 1 of 1

AGENCY Arthur J. Gallagher Risk Management Services, LLC		NAMED INSURED Compliance Envirosystems, LLC See attached page for additional names 1401 Seaboard Dr. Baton Rouge LA 70810	
POLICY NUMBER		EFFECTIVE DATE:	
CARRIER	NAIC CODE		

ADDITIONAL REMARKS

THIS ADDITIONAL REMARKS FORM IS A SCHEDULE TO ACORD FORM,

FORM NUMBER: 25 **FORM TITLE:** CERTIFICATE OF LIABILITY INSURANCE

The General Liability includes Blanket Additional Insured as required by written contract (97838 04/08) and Blanket Additional Insured- Completed Operations as required by written contract (97837 04/08), Primary and Non-Contributory wording as required by written contract (CG 20 01 12/19); Blanket Waiver of Subrogation as required by written contract (CG 24 04 12/19), Per Project Aggregate as required by written contract (86681 09/04) and 30 days' Notice of Cancellation in favor of others as required by written contract (107414 3/11).

The Auto Liability includes Blanket Additional Insured as required by under contract or written agreement. (CA 87950 09/14), Primary and Non-Contributory wording as required by written contract (CA 74445 10/99); Blanket Waiver of Subrogation as required by written contract (CA62897 06/65), 30 days' Notice of Cancellation in favor of others as required by written contract (107414 03/11).

Pollution policy includes blanket Additional Insured as required by written contract but only to the extent required and up to the limits required in such written contract or agreement, Primary and Non-Contributory wording as required by written contract and blanket waiver of subrogation as per written contract, but not in regards to a subcontractor of the insured.

The Worker's Compensation includes Blanket alternate employer if required by written contract (WC 00 03 01 A 02/89), Blanket Waiver of Subrogation is required by written contract (WC 00 03 13 04/84), 30 days' Notice of Cancellation in favor of others if required by written contract.

The Excess Policies are Follow Form over the General Liability, Auto Liability and Employers Liability policies.

NAMED INSURED:

Compliance Envirosystems, LLC;

CES Memphis, LLC;

DCM Properties, LLC;

Junior Partners, LLC;

Sewer Hawk, LLC;

Tricon, LLC;

CES Hattiesburg, LLC

Project Name/Number: Snapfinger Trunk Sewer Cleaning

ENDORSEMENT

This endorsement, effective 12:01 A.M. 04/01/2025
forms a part of Policy No. 542-54-88
issued to COMPLIANCE ENVIROSYSTEMS, LLC
by NATIONAL UNION FIRE INSURANCE COMPANY OF PITTSBURGH, PA.

INSURANCE PRIMARY AS TO CERTAIN ADDITIONAL INSURED


This endorsement modifies insurance provided under the following:

BUSINESS AUTO COVERAGE FORM

Section IV - Business Auto Conditions, B., General Conditions, 5., Other Insurance, c., is amended by the addition of the following sentence:

The insurance afforded under this policy to an additional insured will apply as primary insurance for such additional insured where so required under an agreement executed prior to the date of accident. We will not ask any insurer that has issued other insurance to such additional insured to contribute to the settlement of loss arising out of such accident.

All other terms and conditions remain unchanged.



Authorized Representative or
Countersignature (in States Where
Applicable)

ENDORSEMENT

This endorsement, effective 12:01 A.M. 04/01/2025
forms a part of Policy No. 542-54-88
issued to COMPLIANCE ENVIROSYSTEMS, LLC
by NATIONAL UNION FIRE INSURANCE COMPANY OF PITTSBURGH, PA.

ADDITIONAL INSURED - WHERE REQUIRED UNDER CONTRACT OR AGREEMENT

This endorsement modifies insurance provided under the following:

BUSINESS AUTO COVERAGE FORM

SCHEDULE

ADDITIONAL INSURED:

ANY PERSON OR ORGANIZATION FOR WHOM YOU ARE CONTRACTUALLY BOUND TO PROVIDE
ADDITIONAL INSURED STATUS BUT ONLY TO THE EXTENT OF SUCH PERSON'S OR
ORGANIZATION'S LIABILITY ARISING OUT OF THE USE OF A COVERED "AUTO".

- I. **SECTION II - COVERED AUTOS LIABILITY COVERAGE, A. Coverage, 1. - Who Is Insured,** is amended to add:
- d. Any person or organization, shown in the schedule above, to whom you become obligated to include as an additional insured under this policy, as a result of any contract or agreement you enter into which requires you to furnish insurance to that person or organization of the type provided by this policy, but only with respect to liability arising out of use of a covered "auto". However, the insurance provided will not exceed the lesser of:
 - (1) The coverage and/or limits of this policy, or
 - (2) The coverage and/or limits required by said contract or agreement.



AUTHORIZED REPRESENTATIVE

ENDORSEMENT

This endorsement, effective 12:01 A.M. 04/01/2025 forms a part of

policy No. CA 542-54-88 issued to COMPLIANCE ENVIROSYSTEMS, LLC

by NATIONAL UNION FIRE INSURANCE COMPANY OF PITTSBURGH, PA

THIS ENDORSEMENT CHANGES THE POLICY. PLEASE READ IT CAREFULLY.

WAIVER OF TRANSFER OF RIGHTS OF RECOVERY AGAINST OTHERS TO US

This endorsement modifies insurance provided under the following:

BUSINESS AUTO COVERAGE FORM

Section IV - Business Auto Conditions, A. - Loss Conditions, 5. - Transfer of Rights of Recovery Against Others to Us, is amended to add:

However, we will waive any right of recover we have against any person or organization with whom you have entered into a contract or agreement because of payments we make under this Coverage Form arising out of an "accident" or "loss" if:

- (1) The "accident" or "loss" is due to operations undertaken in accordance with the contract existing between you and such person or organization; and
- (2) The contract or agreement was entered into prior to any "accident" or "loss".

No waiver of the right of recovery will directly or indirectly apply to your employees or employees of the person or organization, and we reserve our rights or lien to be reimbursed from any recovery funds obtained by any injured employee.



AUTHORIZED REPRESENTATIVE

WAIVER OF TRANSFER OF RIGHTS OF RECOVERY AGAINST OTHERS TO US

This endorsement modifies insurance provided under the following:

COMMERCIAL GENERAL LIABILITY COVERAGE PART
PRODUCTS/COMPLETED OPERATIONS LIABILITY COVERAGE PART

SCHEDULE

Name Of Person Or Organization:

PURSUANT TO APPLICABLE WRITTEN CONTRACT OR AGREEMENT YOU ENTER INTO.

Information required to complete this Schedule, if not shown above, will be shown in the Declarations.

The following is added to Paragraph **8. Transfer Of Rights Of Recovery Against Others To Us** of **Section IV - Conditions**:

We waive any right of recovery we may have against the person or organization shown in the Schedule above because of payments we make for injury or damage arising out of your ongoing operations or "your work" done under a contract with that person or organization and included in the "products-completed operations hazard". This waiver applies only to the person or organization shown in the Schedule above.

ENDORSEMENT

policy No. GL 956-60-98 issued to COMPLIANCE ENVIROSYSTEMS, LLC

by NATIONAL UNION FIRE INSURANCE COMPANY OF PITTSBURGH, PA

THIS ENDORSEMENT CHANGES THE POLICY. PLEASE READ IT CAREFULLY.

ADDITIONAL INSURED- OWNERS, LESSEES, OR CONTRACTORS - COMPLETED OPERATIONS

This endorsement modifies insurance provided under the following:

COMMERCIAL GENERAL LIABILITY COVERAGE FORM

SCHEDULE

NAME OF ADDITIONAL INSURED PERSON OR ORGANIZATION:

ANY PERSON OR ORGANIZATION WHOM YOU BECOME OBLIGATED TO INCLUDE AS AN ADDITIONAL INSURED AS A RESULT OF ANY CONTRACT OR AGREEMENT YOU HAVE ENTERED INTO.

LOCATION AND DESCRIPTION OF COMPLETED OPERATIONS:
PER THE CONTRACT OR AGREEMENT.

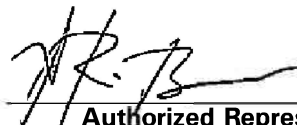
ADDITIONAL PREMIUM:

(If No entry appears above, information required to complete this endorsement will be shown in the Declarations as applicable to the endorsement.)

SECTION II - WHO IS AN INSURED is amended to include as an insured;

The person or organization shown in the Schedule, but only with respect to liability arising out of "your work" at the location designated and described in the schedule of this endorsement performed for that additional insured and included in the "products-completed operations hazard".

All other terms and conditions remain unchanged.



Authorized Representative or
Countersignature (in States Where
Applicable)

ENDORSEMENT

policy No. GL 956-60-98 issued to COMPLIANCE ENVIROSYSTEMS, LLC

by NATIONAL UNION FIRE INSURANCE COMPANY OF PITTSBURGH, PA

THIS ENDORSEMENT CHANGES THE POLICY. PLEASE READ IT CAREFULLY.

**ADDITIONAL INSURED- OWNERS, LESSEES, OR CONTRACTORS -
SCHEDULED PERSON OR ORGANIZATION**

This endorsement modifies insurance provided under the following:

COMMERCIAL GENERAL LIABILITY COVERAGE FORM

SCHEDULE

NAME OF PERSON OR ORGANIZATION:

**ANY PERSON OR ORGANIZATION WHOM YOU BECOME OBLIGATED TO INCLUDE AS AN
ADDITIONAL INSURED AS A RESULT OF ANY CONTRACT OR AGREEMENT YOU HAVE
ENTERED INTO.**

(If no entry appears above, information required to complete this endorsement will be shown in the
Declarations as applicable to the endorsement.)

A. SECTION II -WHO IS AN INSURED is amended to include as an insured;

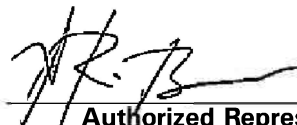
The person or organization shown in the schedule, but only with respect to liability arising
out of your ongoing operations performed for that additional insured.

**B. With respect to the insurance afforded to these additional insureds, SECTION I -
COVERAGES, COVERAGE A - BODILY INJURY AND PROPERTY DAMAGE LIABILITY, 2. -
Exclusions, is amended to include the following additional exclusion;**

This insurance does not apply to "bodily injury" or "property damage" occurring after:

- (1)** all work, including materials, parts or equipment furnished in connection with such
work, on the project (other than service, maintenance or repairs) to be performed by or
on behalf of the additional insured(s) at the site of the covered operations has been
completed; or,
- (2)** that portion of "your work" out of which the injury or damage arises has been put to its
intended use by any person or organization other than another contractor or
subcontractor engaged in performing operations for a principal as a part of the same
project.

All other terms and conditions remain unchanged.



**Authorized Representative or
Countersignature (in States Where
Applicable)**

THIS ENDORSEMENT CHANGES THE POLICY. PLEASE READ IT CAREFULLY.

PRIMARY AND NONCONTRIBUTORY - OTHER INSURANCE CONDITION

This endorsement modifies insurance provided under the following:

COMMERCIAL GENERAL LIABILITY COVERAGE PART
LIQUOR LIABILITY COVERAGE PART
PRODUCTS/COMPLETED OPERATIONS LIABILITY COVERAGE PART

The following is added to the **Other Insurance** Condition and supersedes any provision to the contrary:

Primary And Noncontributory Insurance

This insurance is primary to and will not seek contribution from any other insurance available to an additional insured under your policy provided that:

(1) The additional insured is a Named Insured under such other insurance; and

(2) You have agreed in writing in a contract or agreement that this insurance would be primary and would not seek contribution from any other insurance available to the additional insured.

WAIVER OF OUR RIGHT TO RECOVER FROM OTHERS ENDORSEMENT

This endorsement changes the policy to which it is attached effective on inception date of the policy unless a different date is indicated below.

This endorsement, effective 12:01 AM 04/01/2024 forms a part of Policy No. WC 721-13-225

Issued to COMPLIANCE ENVIROSYSTEMS, LLC

By NEW HAMPSHIRE INSURANCE COMPANY

We have the right to recover our payments from anyone liable for an injury covered by this policy. We will not enforce our right against the person or organization named in the Schedule. This agreement applies only to the extent that you perform work under a written contract that requires you to obtain this agreement from us.

This agreement shall not operate directly or indirectly to benefit any one not named in the Schedule.

Schedule

ANY PERSON OR ORGANIZATION TO WHOM YOU BECOME
OBLIGATED TO WAIVE YOUR RIGHTS OF RECOVERY
AGAINST, UNDER ANY WRITTEN CONTRACT OR AGREEMENT
YOU ENTER INTO PRIOR TO THE OCCURRENCE OF LOSS.

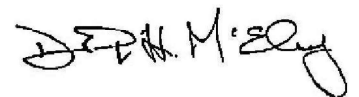
This form is not applicable in Kansas for private construction contracts as defined in K.S.A. 16-1801 through K.S.A. 16-1807 or public construction contracts as defined in K.S.A. 16-1901 through 16-1908, except where permitted by statute or other applicable law, such as for use in wrap-up insurance programs.

Any person or organization for which the employer has agreed by written contract, executed prior to loss, may execute a waiver of subrogation. However, for purposes of work performed by the employer in Missouri, this waiver of subrogation does not apply to any construction group of classifications as designated by the waiver of right to recover from others (subrogation) rule in our manual.

This form is not applicable in California, Kentucky, New Hampshire, New Jersey, Texas, or Utah.

WC 00 03 13
(Ed. 04/84)

Countersigned by _____



Authorized Representative

THANK YOU



UNIT PRICE BID FORM

2025 Snapfinger Trunk Assessment and Cleaning

				Vortex		CES		Engineer's Estimate	
Bid Item No.	Description	Total Bid Quantity	Unit	Unit Price	Extended Total Bid Price	Unit Price	Extended Total Bid Price	Unit Price	Extended Total Bid Price
Division 1 - General Requirements									
Sonar/TISCIT Inspection									
01510-01	Sonar/TISCIT Survey > 24" and ≤ 36" Diameter Pipe	10,500	LF	\$36.00	\$378,000.00	\$8.00	\$84,000.00	\$14.00	\$147,000.00
01510-02	Sonar/TISCIT Survey > 36" Diameter Pipe	58,000	LF	\$48.00	\$2,784,000.00	\$8.00	\$464,000.00	\$15.00	\$870,000.00
Sewer Flow Control									
01520-01	Bypass Pumping ≥ 36" Diameter Pipe with Flow >25% and <50%	1,000	LF	\$1,500.00	\$1,500,000.00	\$252.01	\$252,010.00	\$220.00	\$220,000.00
01520-02	Bypass Pumping ≥ 36" Diameter Pipe with Flow >50%	1,000	LF	\$2,200.00	\$2,200,000.00	\$416.30	\$416,300.00	\$250.00	\$250,000.00
01520-03	Bypass Pumping Maintenance & Operation (≥36")	80	HR	\$2,250.00	\$180,000.00	\$1,500.00	\$120,000.00	\$500.00	\$40,000.00
Manhole Adjustments									
02607-01	Manhole Cone Removal and Replacement	20	EA	\$51,000.00	\$1,020,000.00	\$7,420.00	\$148,400.00	\$800.00	\$16,000.00
SANITARY SEWER CLEANING									
02956-01	Cleaning & Verification ≤15% Average Cross Section Area Blockage, 24"-36" Diameter	2,050	LF	\$48.00	\$98,400.00	\$41.95	\$85,997.50	\$16.00	\$32,800.00
02956-02	Cleaning & Verification >15% - 25% Average Cross Section Area Blockage, 24"-36" Diameter	2,050	LF	\$54.00	\$110,700.00	\$48.12	\$98,646.00	\$20.00	\$41,000.00
02956-03	Cleaning & Verification >25% Average Cross Section Area Blockage, 24"-36" Diameter	1,050	LF	\$90.00	\$94,500.00	\$54.18	\$56,889.00	\$22.00	\$23,100.00
02956-04	Cleaning & Verification ≤15% Average Cross Section Area Blockage, >36" Diameter	23,200	LF	\$79.50	\$1,844,400.00	\$43.12	\$1,000,384.00	\$25.00	\$580,000.00
02956-05	Cleaning & Verification >15% - 25% Average Cross Section Area Blockage, >36" Diameter	12,000	LF	\$84.00	\$1,008,000.00	\$49.14	\$589,680.00	\$30.00	\$360,000.00
02956-06	Cleaning & Verification >25% Average Cross Section Area Blockage, >36" Diameter	12,000	LF	\$90.00	\$1,080,000.00	\$59.17	\$710,040.00	\$40.00	\$480,000.00
02956-07	Cleaning & Verification of Ancillary Structures	80	HR	\$2,250.00	\$180,000.00	\$674.00	\$53,920.00	\$750.00	\$60,000.00
Division 2 - Site Work									
Access Route and Easement Clearing									
02110-01	Easement Access Road-12' Width, Installation and Removal	1,000	LF	\$1,155.00	\$1,155,000.00	\$80.50	\$80,500.00	\$300.00	\$300,000.00
02110-02	Easement Access Road-12' Width, Installation only	1,000	LF	\$930.00	\$930,000.00	\$57.50	\$57,500.00	\$200.00	\$200,000.00
02110-03	Easement Clearing, Light (Bush Hog)	2,500	SY	\$46.50	\$116,250.00	\$11.50	\$28,750.00	\$20.00	\$50,000.00
02110-04	Easement Clearing, Medium (Bush Hog & Chipper)	2,500	SY	\$115.50	\$288,750.00	\$17.25	\$43,125.00	\$30.00	\$75,000.00
02110-05	Easement Clearing, Heavy (Timbering Equipment)	100	Caliper Inch	\$577.50	\$57,750.00	\$28.75	\$2,875.00	\$200.00	\$20,000.00
Site Restoration & Erosion Control									
02273-01	Riprap, Type II (Installed)	100	SY	\$1,260.00	\$126,000.00	\$115.00	\$11,500.00	\$400.00	\$40,000.00
02273-02	Riprap, Type III (Installed)	100	SY	\$1,080.00	\$108,000.00	\$109.25	\$10,925.00	\$300.00	\$30,000.00
02276-06	Temporary Creek Crossing (36" diameter)	400	LF	\$1,440.00	\$576,000.00	\$316.25	\$126,500.00	\$500.00	\$200,000.00
02276-07	Temporary Creek Crossing (42" diameter)	400	LF	\$1,860.00	\$744,000.00	\$373.75	\$149,500.00	\$600.00	\$240,000.00
02485-01	Sodding to Match Existing	100	SY	\$168.00	\$16,800.00	\$17.25	\$1,725.00	\$50.00	\$5,000.00
02486-01	Seeding to Match Existing	100	SY	\$24.00	\$2,400.00	\$7.00	\$700.00	\$20.00	\$2,000.00
02542-01	Silt Fence - Type C, Single Row	2,000	LF	\$24.00	\$48,000.00	\$9.20	\$18,400.00	\$7.00	\$14,000.00
02542-02	Silt Fence - Type C, Double Row	1,000	LF	\$36.00	\$36,000.00	\$20.70	\$20,700.00	\$12.00	\$12,000.00
	SUBTOTAL:				\$16,682,950.00		\$4,632,966.50		\$4,307,900.00
1020	Owner's Allowance (10% of the Subtotal Amount)	1	Allowance		\$1,668,295.00		\$463,296.65		\$430,790.00
	TOTAL:				\$18,351,245.00		\$5,096,263.15		\$4,738,690.00