

RAINBOW PARK MASTER PLAN (2018)

PROJECT SUMMARY (DISTRICTS 3&7)

PROJECT CONSISTS OF CREATING A MASTER PLAN FOR THE PARK TO CREATE AN ART COMPLEX, INCLUDING AN AMPHITHEATER WITH SUPPORTING FACILITIES, GARDEN AREA, AND PASSIVE PAVILIONS. WE WILL CONSTRUCT A PORTION OF THE FIRST PHASE.

PROJECT TEAM

FORESITE GROUP (LANDSCAPE ARCHITECT), ASTRA (GENERAL CONTRACTOR)

PROJECT ESTIMATE

\$2.2-2.5 MILLION. CURRENT FUNDING \$1,000,000.

PUBLIC INPUT MEETINGS

THE FIRST PUBLIC MEETING WAS HELD ON NOVEMBER 20TH, 2017

- THE PURPOSE OF THE INITIAL MEETING WAS TO GIVE CITIZENS AN OVERVIEW OF THE PROJECT, ITS CONSTRAINTS, AND HEAR ANY QUESTIONS OR CONCERNS. ROUGHLY 20 PEOPLE ATTENDED.

THE SECOND PUBLIC MEETING WAS HELD ON DECEMBER 18TH, 2017

- THE PURPOSE OF THE SECOND MEETING WAS TO GIVE CITIZENS AN OPPORTUNITY TO GIVE FEEDBACK ON CONCEPTS AND IMAGES OF THE PROJECT'S POSSIBILITIES. ROUGHLY 35 PEOPLE ATTENDED.

THE FINAL PUBLIC MEETING WAS HELD ON MARCH 20TH, 2018

- THE PURPOSE OF THE FINAL MEETING WAS TO PRESENT THE FINAL MASTER PLAN BASED ON PREVIOUS PUBLIC INPUT.

TIMELINE

PHASE 1 COMPLETED SUMMER 2019

RAINBOW PARK MASTER PLAN

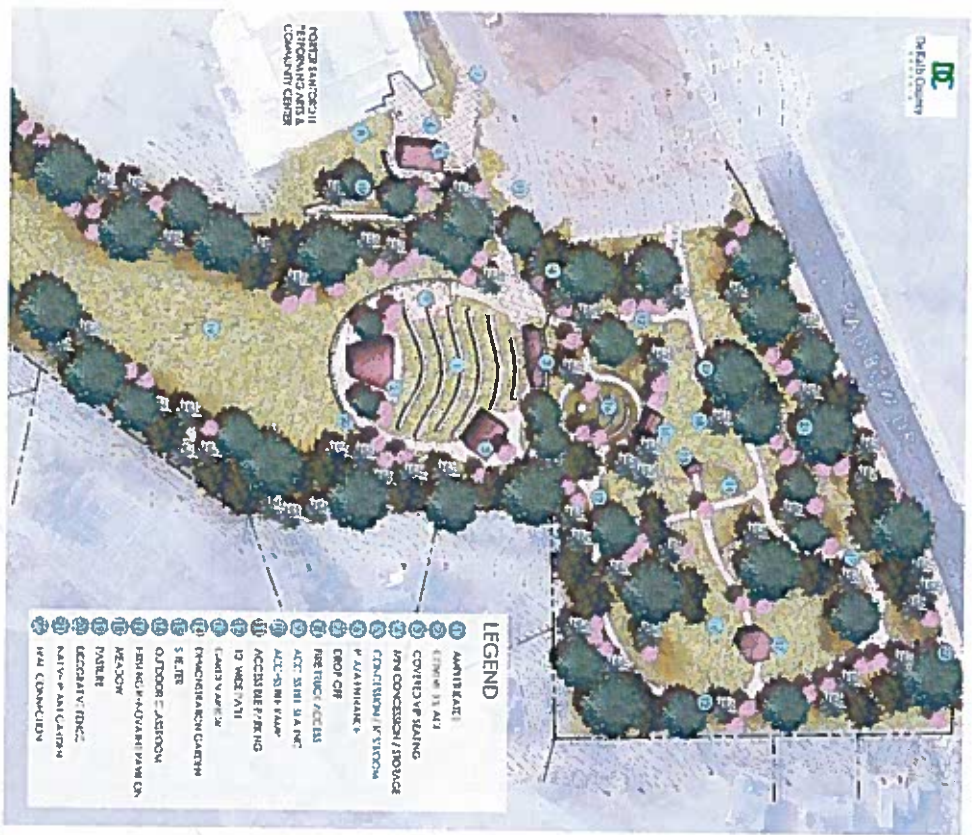
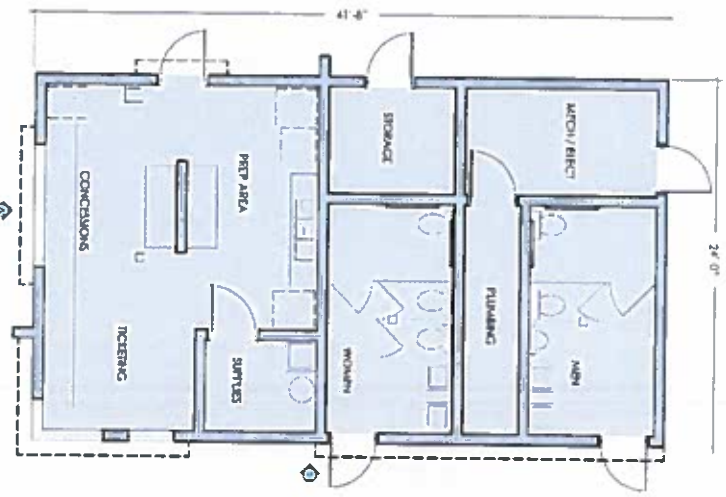
COST ESTIMATE

PHASE I				
	Quantities	Cost	Unit	Total
Site Prep	-	-	-	\$88,000.00
Earthwork and Drainage	-	-	-	\$66,000.00
Utilities	-	-	-	\$103,000.00
Paving	-	-	-	\$77,000.00
Hardscape	-	-	-	\$347,000.00
Landscaping	-	-	-	\$140,000.00
Stage	-	-	-	\$397,000.00
General Conditions	-	-	-	\$268,000.00
			Total	\$1,486,000.00
PHASE II				
HC Access	-	-	-	\$401,000.00
Fencing	-	-	-	\$96,000.00
Pavilion	-	-	-	\$125,000.00
Restroom	-	-	-	\$446,000.00
			Total	\$1,068,000.00
TOTAL ESTIMATE				
			Total Estimate	\$2,554,000.00

PARK MASTER PLAN



CONCESSION / RESTROOM BUILDING



LEGEND

- 1 AMBITE KATE
- 2 COVERED VEGETATION
- 3 CONCRETE/RESTROOM/STORAGE
- 4 CHANGING/STATION
- 5 V. ALA WINDMILL
- 6 DROP OFF
- 7 RESTROOM ACCESS
- 8 ACC. SIGN. SIGN
- 9 ACCESSIBLE PAVING
- 10 WALKWAY
- 11 LANDS WAREHOUSE
- 12 PAVILION/RESTROOM
- 13 SHELTER
- 14 OUTDOOR RESTROOM
- 15 HISTORIC/ANNUAL PAVILION
- 16 PAVILION
- 17 NATIVE PLANT
- 18 CONCRETE
- 19 CONCRETE
- 20 CONCRETE
- 21 CONCRETE
- 22 CONCRETE
- 23 CONCRETE
- 24 CONCRETE

RAINBOW DR



PORTER SANFORD III
PERFORMING ARTS &
COMMUNITY CENTER

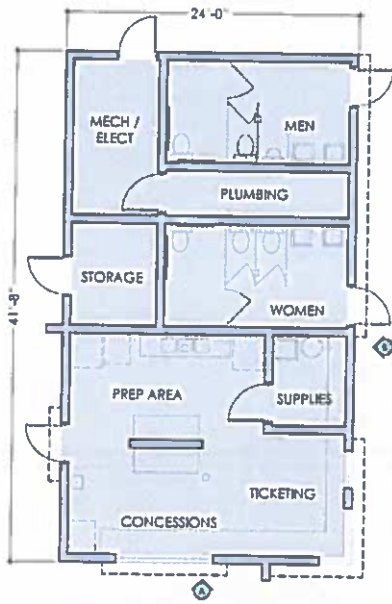
LEGEND

- ① AMPHITHEATER
- ② COVERED STAGE
- ③ COVERED VIP SEATING
- ④ MINI CONCESSION / STORAGE
- ⑤ CONCESSION / RESTROOM
- ⑥ PLAZA ENTRANCE
- ⑦ DROP-OFF
- ⑧ FIRE TRUCK ACCESS
- ⑨ ACCESSIBLE SEATING
- ⑩ ACCESSIBLE RAMP
- ⑪ ACCESSIBLE PARKING
- ⑫ 10'-WIDE PATH
- ⑬ GARDEN ARBOR
- ⑭ DEMONSTRATION GARDEN
- ⑮ SHELTER
- ⑯ OUTDOOR CLASSROOM
- ⑰ EXISTING RENOVATED PAVILION
- ⑱ MEADOW
- ⑲ PASTURE
- ⑳ DECORATIVE FENCE
- ㉑ NATIVE PLANT GARDEN
- ㉒ TRAIL CONNECTION



RAINBOW PARK
CONCEPT PLAN

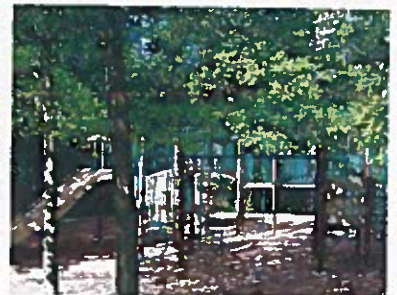
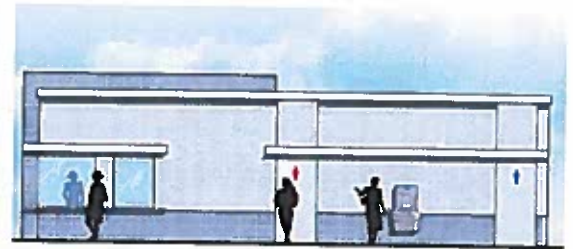
CONCESSION / RESTROOM BUILDING



ELEVATION "A"



ELEVATION "B"



RAINBOW PARK
CHARACTER PHOTOS