
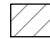

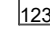

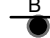
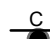
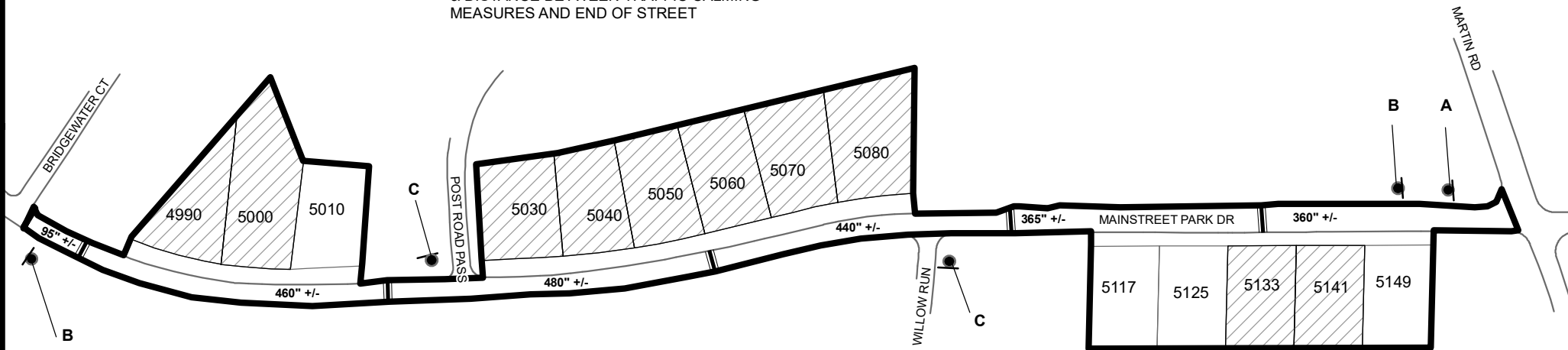
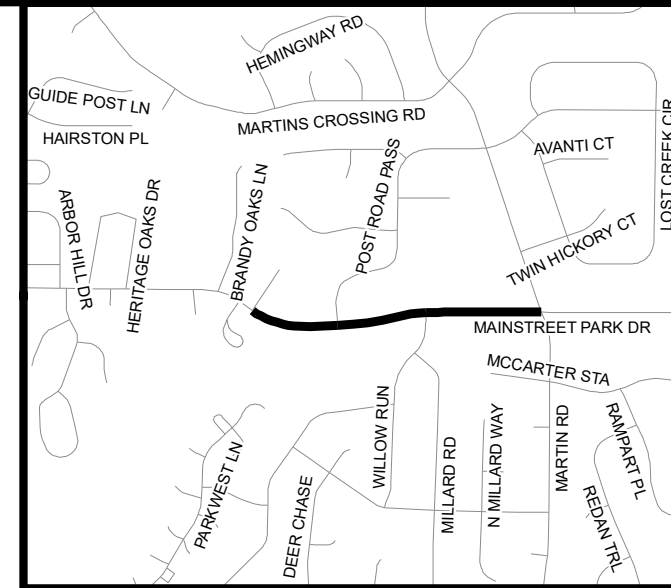


# TRAFFIC CALMING DISTRICT 23-16-04

## LEGEND



-  AFFECTED AREA
-  YES VOTES (10)
-  SPEED TABLES (5)
-  PARCEL BOUNDARY AND ADDRESS NUMBER
-  A TRAFFIC CALMING DISTRICT SIGNS
-  B SPEED HUMPS AHEAD SIGN AND ADVISORY 15 MPH SPEED PLAQUE
-  C SPEED HUMP AHEAD SIGN, CROSS STREET, AND ADVISORY 15 MPH SPEED PLAQUE
- 123 +/- DISTANCE BETWEEN TRAFFIC CALMING MEASURES (CENTER TO CENTER) & DISTANCE BETWEEN TRAFFIC CALMING MEASURES AND END OF STREET



**NOTES:**

- 1) NUMBER OF PARCELS IN AFFECTED AREA: 14
- 2) STREET(S) IN AFFECTED AREA: MAINSTREET PARK DRIVE
- 3) EDGE OF TRAFFIC CALMING MEASURE NOT TO ENCROACH WITHIN 5' OF DRIVEWAY RETURNS

DEKALB COUNTY  
TRANSPORTATION DIVISION  
TRAFFIC CALMING SECTION

DRAWN BY: AE  
REVIEWED BY: AE  
REVIEWED BY:  
REVIEWED BY:

SCALE: N.T.S.

Date: 5/9/2023

MAINSTREET PARK DRIVE  
DIST: 16 TH LAND LOT: 1 & 32  
COMMISSION DISTRICTS: 4, 5 & 7