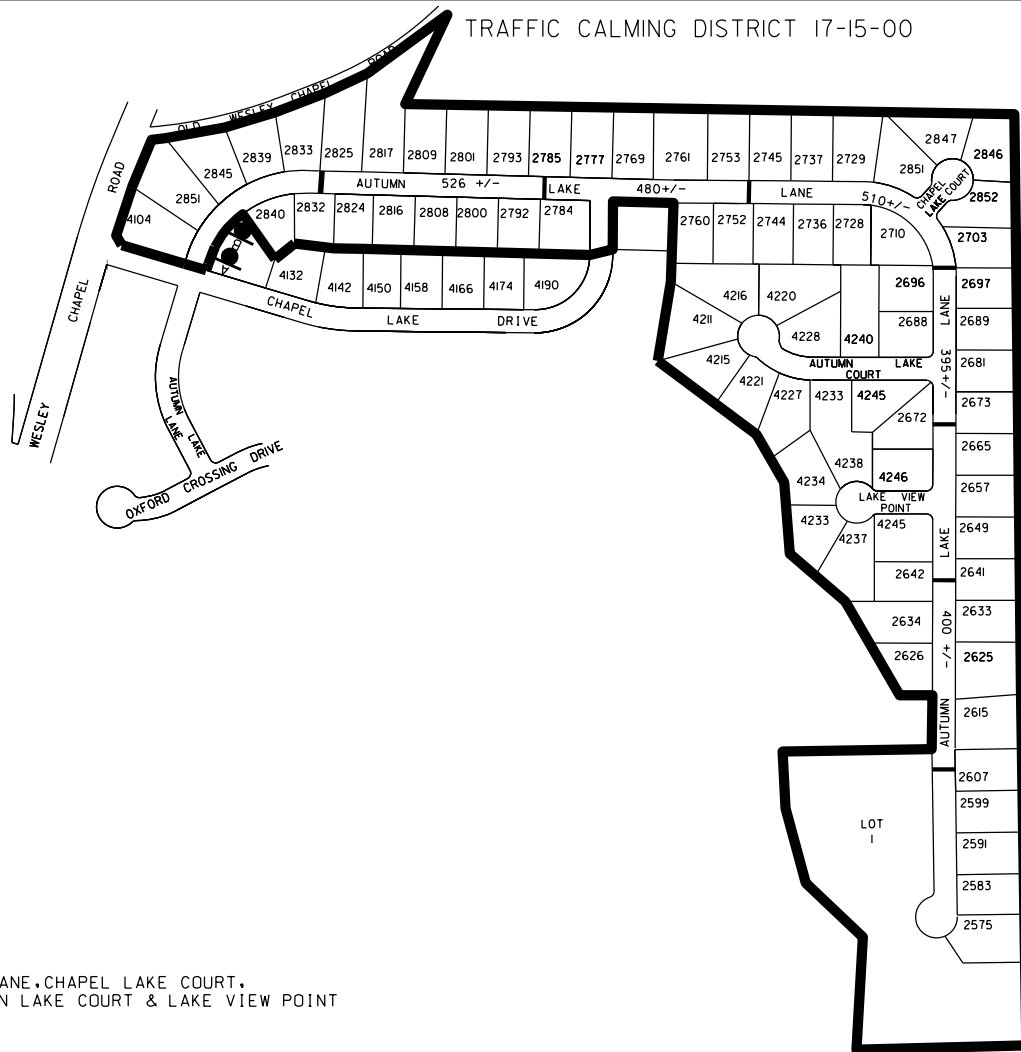


LOCATION MAP

- AFFECTED AREA
 - SPEED TABLES (7)
 - PARCEL BOUNDARY AND ADDRESS NUMBER
 - TRAFFIC CALMING DISTRICT SIGNS
 - SPEED HUMPS AHEAD AND ADVISORY 15 MPH SPEED PLAQUE
 - SPEED HUMP AHEAD SIGN, CROSS STREET, AND ADVISORY 15 MPH SPEED PLAQUE
- DISTANCE BETWEEN TRAFFIC CALMING MEASURES (CENTER TO CENTER) & DISTANCE BETWEEN TRAFFIC CALMING MEASURES AND END OF STREET

NOTES:

- 1) NUMBER OF PARCELS IN AFFECTED AREA: 76
- 2) STREETS IN AFFECTED AREA : AUTUMN LAKE LANE, CHAPEL LAKE COURT, AUTUMN LAKE COURT & LAKE VIEW POINT
- 3) EDGE OF TRAFFIC CALMING MEASURE NOT TO ENCROACH WITHIN 5' OF DRIVEWAY RETURNS



DEKALB COUNTY
TRANSPORTATION DIVISION
TRAFFIC CALMING SECTION

DRAWN BY: TG	APPROVED:
REVIEWED BY: TG	SCALE: N.T.S
REVIEWED BY:	DATE: 4/11/2017
REVIEWED BY:	

AUTUMN LAKE LANE
DIST: 15TH LAND LOT: 94 & 99
COMMISSION DISTRICTS: 3 & 7