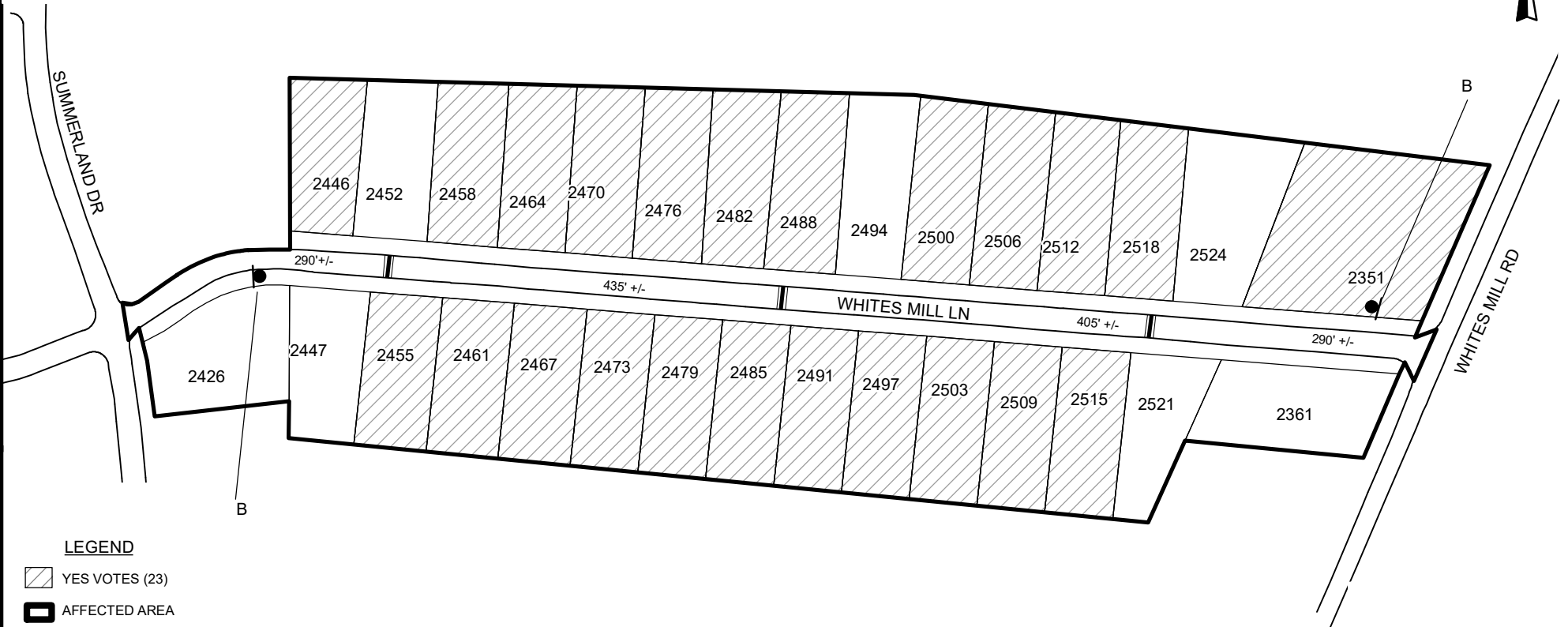
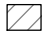


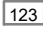
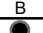
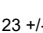


# TRAFFIC CALMING DISTRICT 23-15-08

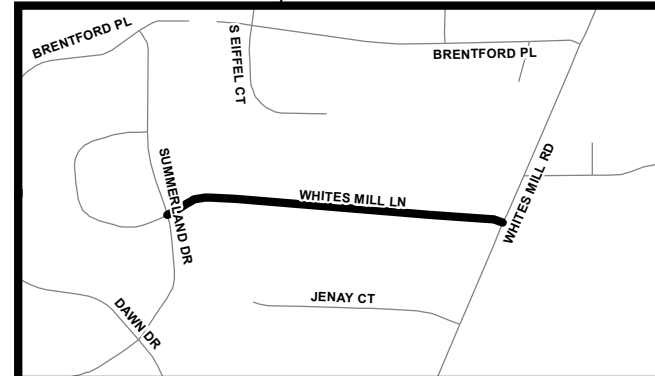


### LEGEND

-  YES VOTES (23)
-  AFFECTED AREA
-  SPEED TABLES (3)
-  PARCEL BOUNDARY AND ADDRESS NUMBER
-  SPEED HUMPS AHEAD SIGN AND ADVISORY 15 MPH SPEED PLAQUE
-  123 +/- DISTANCE BETWEEN TRAFFIC CALMING MEASURES (CENTER TO CENTER) & DISTANCE BETWEEN TRAFFIC CALMING MEASURES AND END OF STREET

### NOTES:

- 1] NUMBER OF PARCELS IN AFFECTED AREA: 30
- 2] STREET(S) IN AFFECTED AREA: WHITES MILL LN, WHITES MILL RD & SUMMERLAND DR
- 3] EDGE OF TRAFFIC CALMING MEASURE NOT TO ENCROACH WITHIN 5' OF DRIVEWAY RETURNS



DEKALB COUNTY  
TRANSPORTATION DIVISION  
TRAFFIC CALMING SECTION

DRAWN BY: CH  
REVIEWED BY: CH  
REVIEWED BY: AE  
REVIEWED BY:

SCALE: N.T.S.

Date: 9/26/2023

WHITES MILL LN

DIST: 15 TH LAND LOT: 138 & 139

COMMISSION DISTRICTS: 3 & 6