

Now or Formerly
Steve Colby
(18-047-15-013)

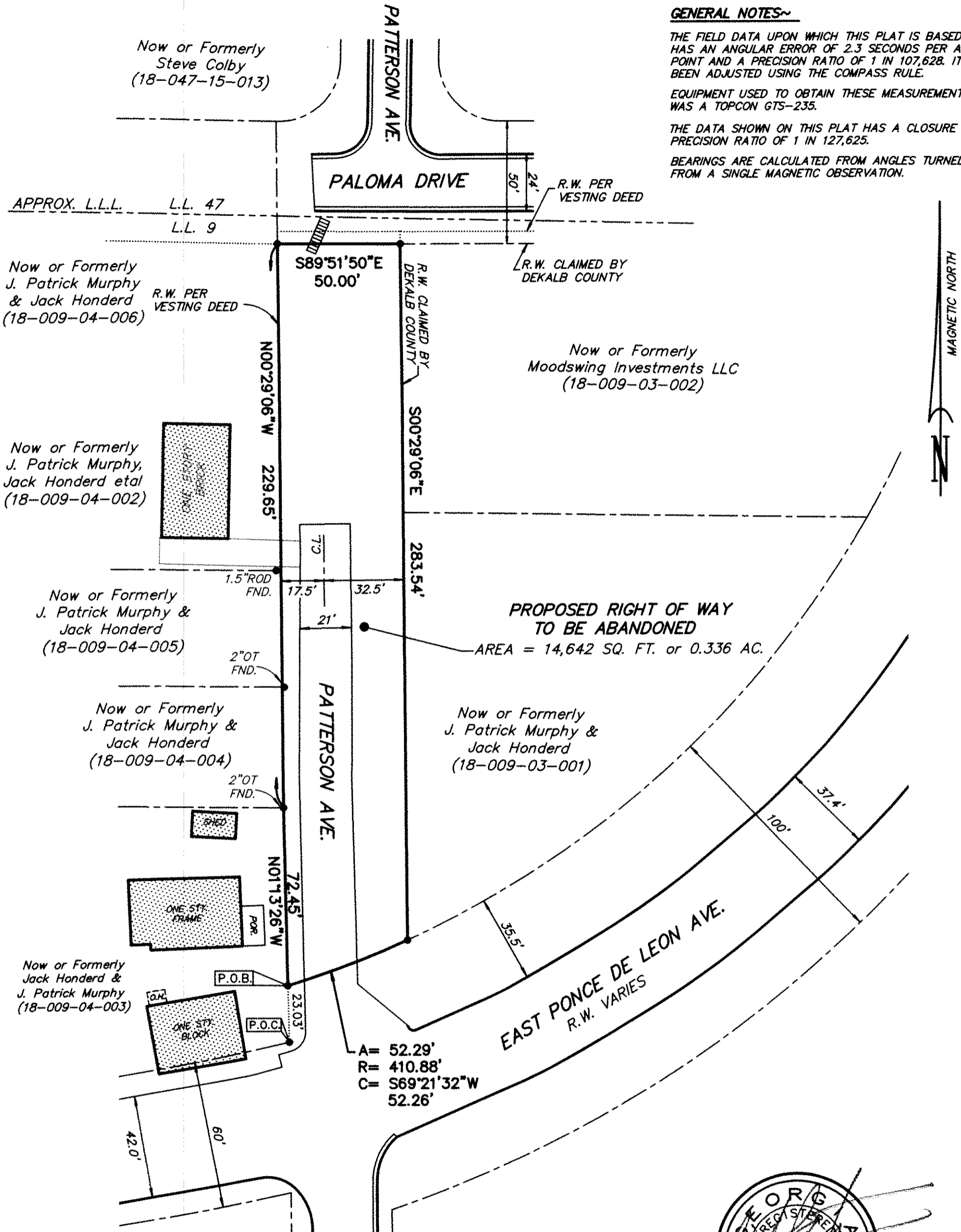
GENERAL NOTES~

THE FIELD DATA UPON WHICH THIS PLAT IS BASED HAS AN ANGULAR ERROR OF 2.3 SECONDS PER ANGLE POINT AND A PRECISION RATIO OF 1 IN 107,628. IT HAS BEEN ADJUSTED USING THE COMPASS RULE.

EQUIPMENT USED TO OBTAIN THESE MEASUREMENTS WAS A TOPCON GTS-235.

THE DATA SHOWN ON THIS PLAT HAS A CLOSURE PRECISION RATIO OF 1 IN 127,625.

BEARINGS ARE CALCULATED FROM ANGLES TURNED FROM A SINGLE MAGNETIC OBSERVATION.



ABBREVIATIONS

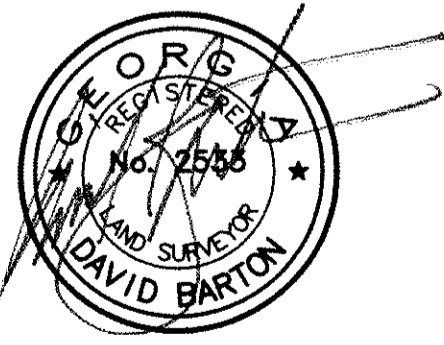
- IPF = IRON PIN FOUND
- IPS = IRON PIN SET
- R.W. = RIGHT OF WAY
- SSE = SANITARY SEWER EASEMENT
- DE = DRAINAGE EASEMENT
- LLL = LAND LOT LINE
- C.L. = CENTERLINE
- #4RB = 1\2" REBAR
- CT = CRIMP TOP PIN
- OT = OPEN TOP PIN
- CMP = CORRUGATED METAL PIPE
- DI = DROP INLET
- JB = JUNCTION BOX
- MH = MANHOLE
- CB = CATCH BASIN
- BM = BENCHMARK
- PP = POWER POLE
- FH = FIRE HYDRANT
- B.C. = BACK OF CURB
- E.P. = EDGE OF PAVEMENT
- TX = TRANSFORMER

**RIGHT OF WAY ABANDONMENT PLAT FOR
PATTERSON T.I.C.**

LOCATED IN LAND LOT 9
18th DISTRICT, CITY OF SCOTSDALE
DEKALB COUNTY, GEORGIA
AUGUST 12, 2016 1"=40'



REVISED MAY 26, 2017
REVISED JUNE 30, 2017
REVISED JULY 26, 2017



**BARTON SURVEYING
INC.**

P.O. BOX 640
LEBANON, GEORGIA 30146
(770) 345-2810
(LICENSE No. LSF 000151)