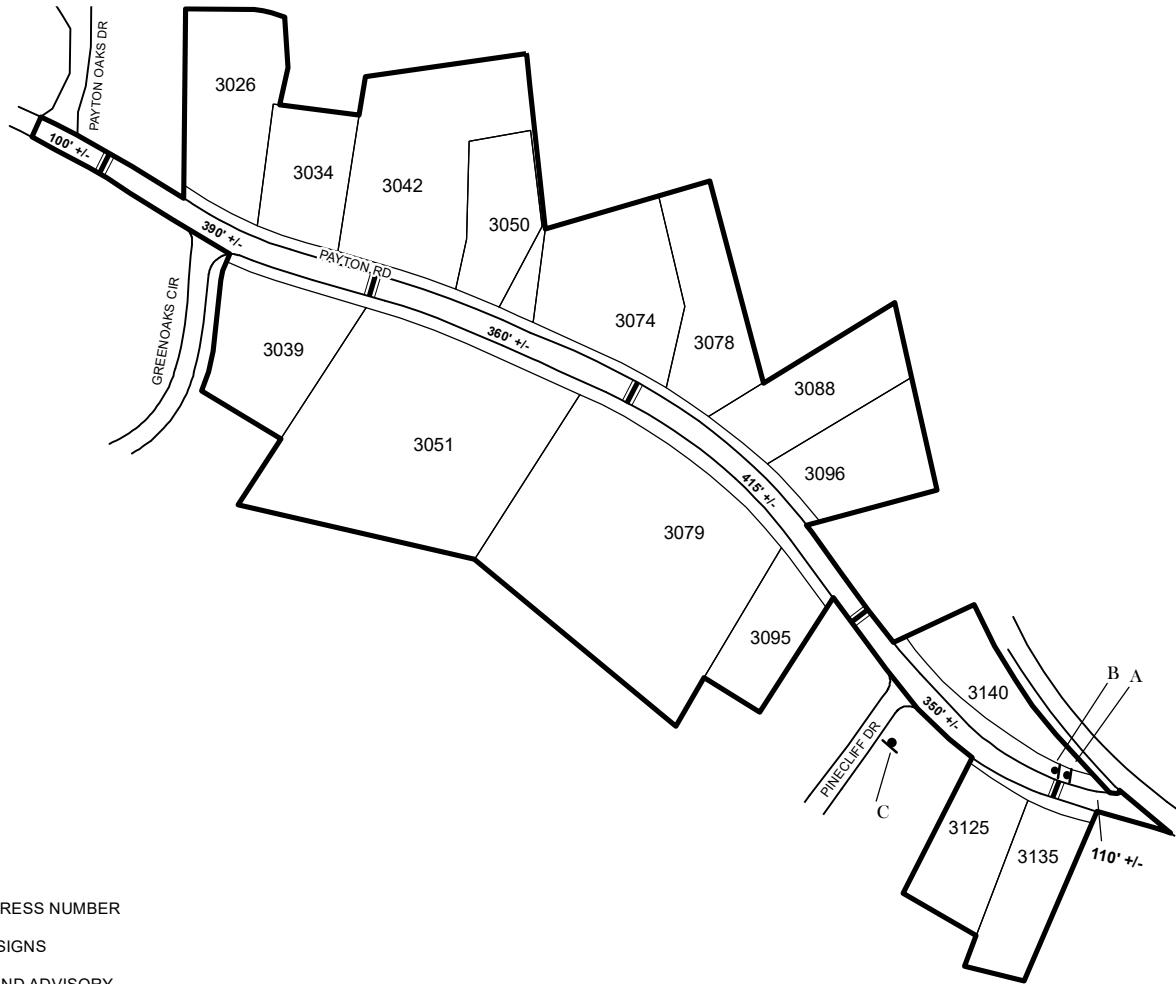


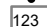

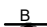
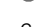


# TRAFFIC CALMING DISTRICT 18-18-00



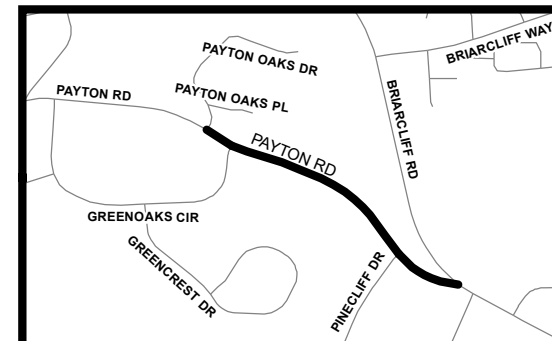
## LEGEND

-  AFFECTED AREA
-  SPEED TABLES (5)
-  PARCEL BOUNDARY AND ADDRESS NUMBER
-  TRAFFIC CALMING DISTRICT SIGNS
-  SPEED HUMPS AHEAD SIGN AND ADVISORY 15 MPH SPEED PLAQUE
-  SPEED HUMP AHEAD SIGN, CROSS STREET, AND ADVISORY 15 MPH SPEED PLAQUE

123 +/- DISTANCE BETWEEN TRAFFIC CALMING MEASURES (CENTER TO CENTER) & DISTANCE BETWEEN TRAFFIC CALMING MEASURES AND END OF STREET

## NOTES:

- 1] NUMBER OF PARCELS IN AFFECTED AREA: 15
- 2] STREET(S) IN AFFECTED AREA: PAYTON RD
- 3] EDGE OF TRAFFIC CALMING MEASURE NOT TO ENCROACH WITHIN 5' OF DRIVEWAY RETURNS



DEKALB COUNTY  
TRANSPORTATION DIVISION  
TRAFFIC CALMING SECTION

DRAWN BY: CH  
REVIEWED BY: CH  
REVIEWED BY: AE  
REVIEWED BY: PGK

SCALE: N.T.S.

Date: 11/13/2018

PAYTON RD (PAYTON OAKS DR TO BRIARCLIFF RD)  
DIST: 18 TH LAND LOT: 208  
COMMISSION DISTRICTS: 1 & 7