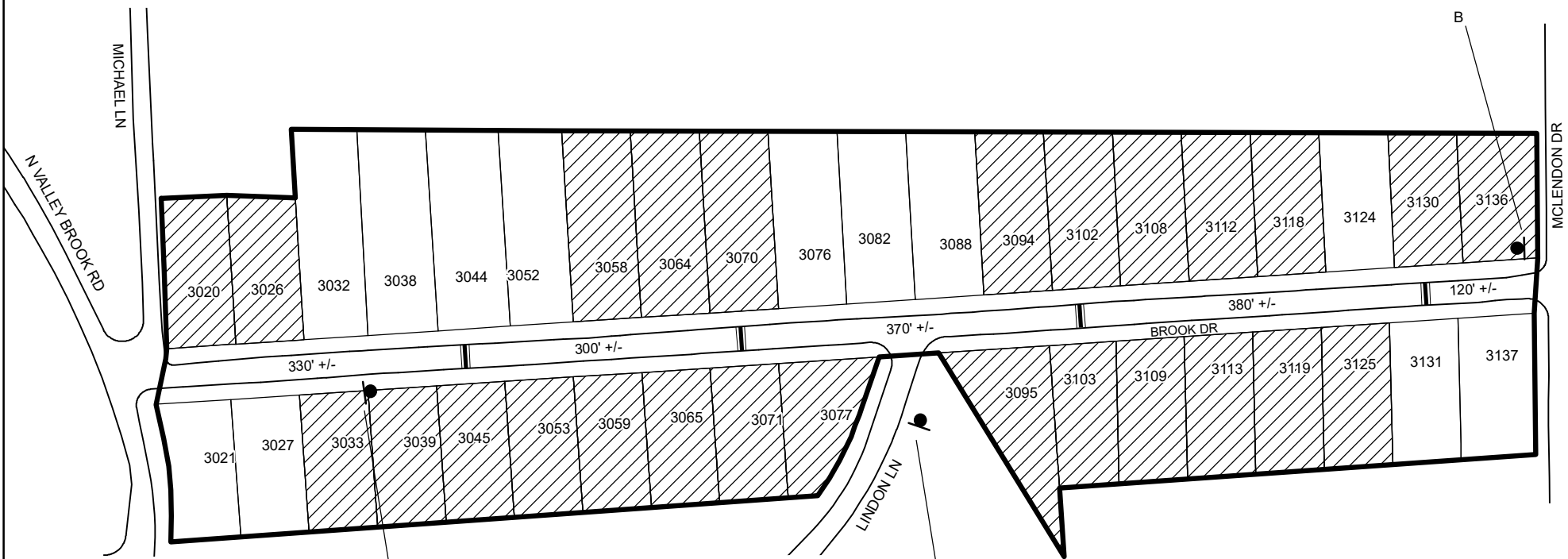


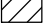
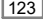
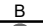



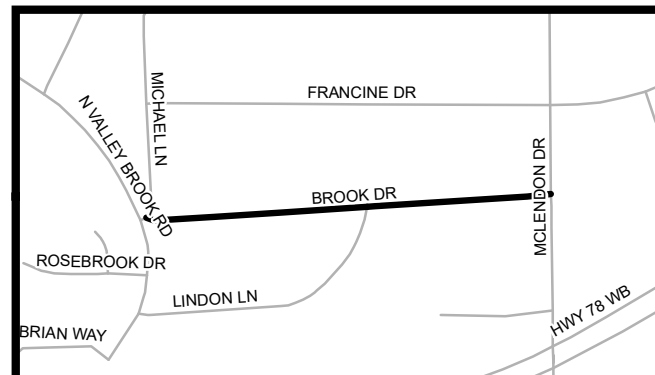
# TRAFFIC CALMING DISTRICT 21-18-03



## LEGEND

-  AFFECTED AREA
-  SPEED TABLES (4)
-  YES VOTES (26)
-  PARCEL BOUNDARY AND ADDRESS NUMBER
-  SPEED HUMPS AHEAD SIGN AND ADVISORY 15 MPH SPEED PLAQUE
-  SPEED HUMP AHEAD SIGN, CROSS STREET, AND ADVISORY 15 MPH SPEED PLAQUE
- 123 +/- DISTANCE BETWEEN TRAFFIC CALMING MEASURES (CENTER TO CENTER) & DISTANCE BETWEEN TRAFFIC CALMING MEASURES AND END OF STREET

- NOTES:
- 1) NUMBER OF PARCELS IN AFFECTED AREA: 38
  - 2) STREET(S) IN AFFECTED AREA: BROOK DR
  - 3) EDGE OF TRAFFIC CALMING MEASURE NOT TO ENCROACH WITHIN 5' OF DRIVEWAY RETURNS



DEKALB COUNTY  
TRANSPORTATION DIVISION  
TRAFFIC CALMING SECTION

DRAWN BY: CH
REVIEWED BY: CH
REVIEWED BY:
REVIEWED BY:

SCALE: N.T.S.
Date: 3/9/2021

BROOK DR  
DIST: 18 TH LAND LOT: 116  
COMMISSION DISTRICTS: 4 & 6