



Agenda Item

Substitute

File #: 2025-0181

4/22/2025

Public Hearing: YES ☐ NO ☒

Department: Recreation, Parks and Cultural Affairs

SUBJECT:

Commission District(s): All Districts

Adoption of the DeKalb County Trails and Greenway Master Plan

Information Contact: Chuck O. Ellis, Director RPCA

Phone Number: 404-371-2475

PURPOSE:

To adopt the DeKalb County Trails and Greenway Master Plan with added revisions made to the prioritization map and table.

NEED/IMPACT:

Adoption will support the implementation of the Master Plan recommendations, which build on and align with multi-use trail projects in the Comprehensive Transportation Plan (CTP) adopted in 2022.

FISCAL IMPACT:

None

RECOMMENDATION:

Adoption of the DeKalb County Trails and Greenway Master Plan with added revisions.

DEKALB COUNTY TRAIL AND GREENWAY MASTER PLAN UPDATE PECS 4/22/2025



Update

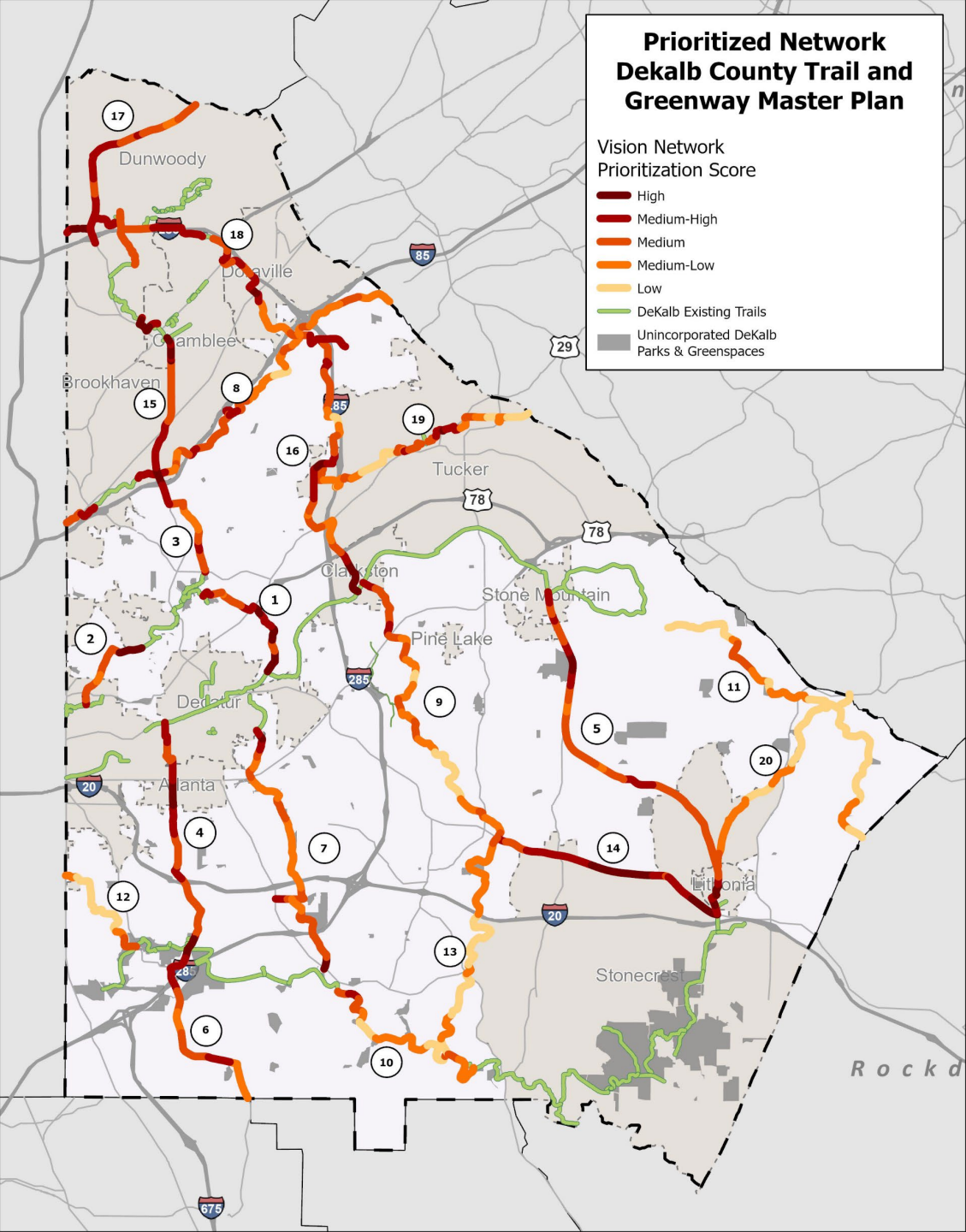
1. PECS 4/25
2. Addition of Bouldercrest Multimodal Connector
3. Prioritization Map and Table Update

Prioritization Criteria Update

- **Feasibility/Project Delivery**
 - Roadway corridors
- **Community Destinations**
 - Schools, libraries, grocery stores, and hospitals
- **Activity Centers**
 - 2050 DeKalb Unified Plan identified activity centers
- **Public Transportation**
 - MARTA stations and stops
- **Bicycle Risk Score**
 - ARC Bicycle Risk Factors
- **Trip Potential**
 - Prioritized segments based on where people live and work
- **Connections to Existing Trails**
 - Access to existing trail network
- **Equitable Projects**
 - ARC Equity Analysis

Prioritization Update

ID	Trail Name
1	Farmers Market Trail
2	Freedom Park Connector
3	Sagamore Trail
4	Decatur - Michelle Obama Trial
5	Stone Mtn - Lithonia Road Trail
6	Bouldercrest Road Multimodal Corridor
7	Shoal Creek Trail
8	Peachtree Creek Greenway
9	Snapfinger Trail North
10	Michelle Obama Trail - South River Trail Connector
11	Stone Mountain Creek Trail
12	Intrenchment Creek
13	Snapfinger Trail South
14	Covington Hwy Multimodal Connector
15	Clairmont Rd Trail
16	Montreal Rd. Connector
17	Ashford Dunwoody - Mt Vernon Connector
18	Top End 285 Trail
19	Tucker Connector
20	Arabia Mtn - Stone Mtn Connector



SUMMARY

- Bouldercrest Multimodal Connector
- Prioritization criteria reevaluated
- Vision network reprioritized

Mileage per district:

District	Mileage Added
District 1	10.8
District 2	5.8
District 3	20
District 4	13.9
District 5	21.4
District 6	24
District 7	47