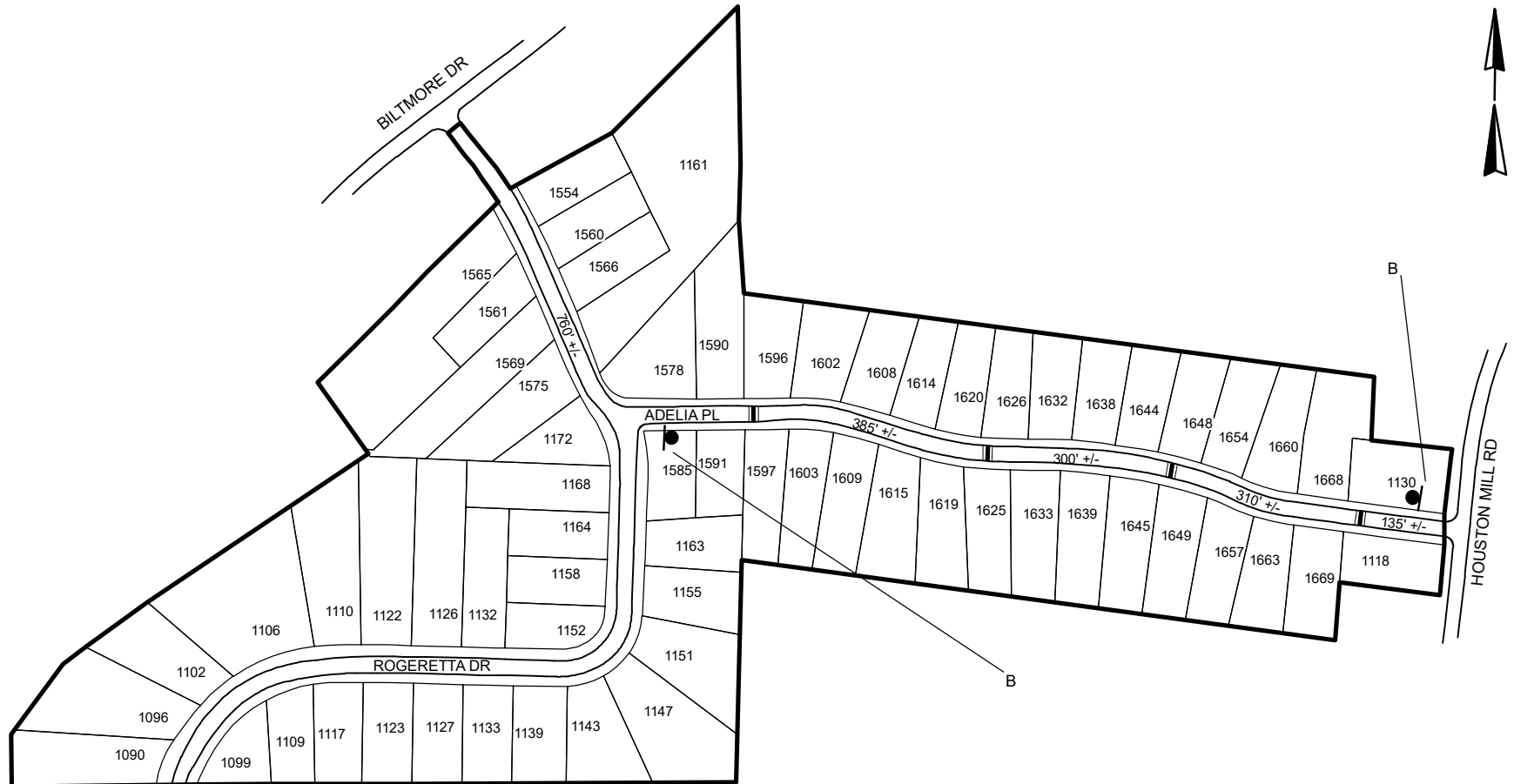


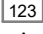

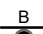



TRAFFIC CALMING DISTRICT 21-15-00

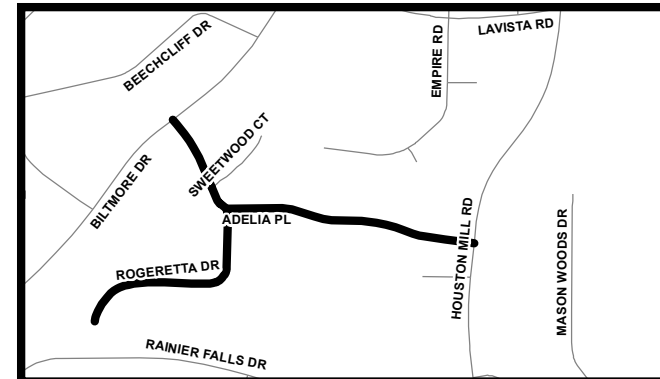


LEGEND

-  AFFECTED AREA
-  SPEED TABLES (4)
-  PARCEL BOUNDARY AND ADDRESS NUMBER
-  A TRAFFIC CALMING DISTRICT SIGNS
-  B SPEED HUMPS AHEAD SIGN AND ADVISORY 15 MPH SPEED PLAQUE
-  C SPEED HUMP AHEAD SIGN, CROSS STREET, AND ADVISORY 15 MPH SPEED PLAQUE
- 123 +/- DISTANCE BETWEEN TRAFFIC CALMING MEASURES (CENTER TO CENTER) & DISTANCE BETWEEN TRAFFIC CALMING MEASURES AND END OF STREET

NOTES:

- 1) NUMBER OF PARCELS IN AFFECTED AREA: 65
- 2) STREET(S) IN AFFECTED AREA: ADELIA PL, ROGERETTA DR, HOUSTON MILL RD, SWEETWOOD CT
- 3) EDGE OF TRAFFIC CALMING MEASURE NOT TO ENCROACH WITHIN 5' OF DRIVEWAY RETURNS



DEKALB COUNTY
TRANSPORTATION DIVISION
TRAFFIC CALMING SECTION

DRAWN BY: CH

REVIEWED BY: CH

REVIEWED BY:

REVIEWED BY:

SCALE: N.T.S.

Date: 5/11/2021

ADELIA PL & ROGERETTA DR

DIST: 18 TH LAND LOT: 2 & 6

COMMISSION DISTRICTS: 2 & 6