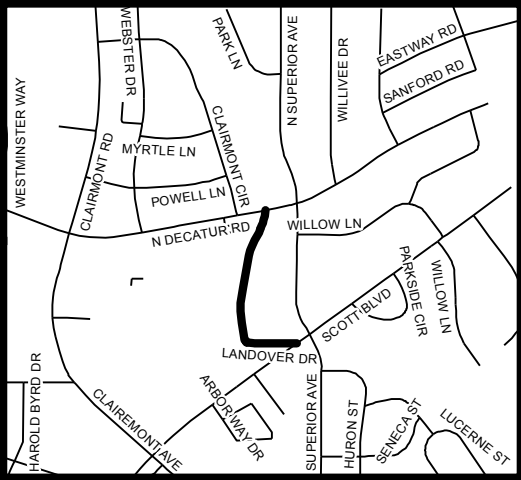





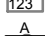
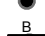



# TRAFFIC CALMING DISTRICT 18-18-02



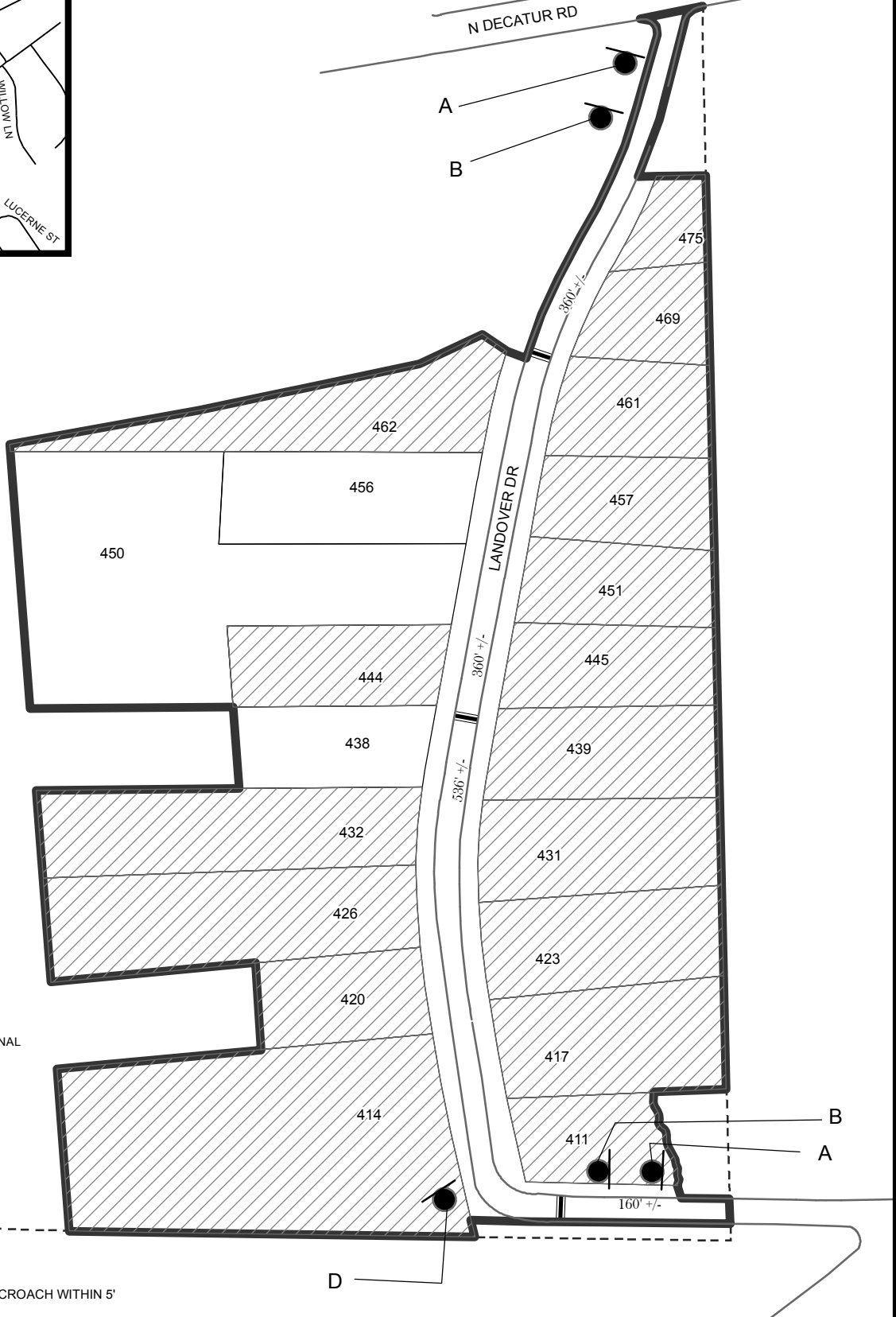
LOCATION MAP



**LEGEND**

-  AFFECTED AREA
-  YES VOTES (17)
-  SPEED TABLES (3)
-  PARCEL BOUNDARY AND ADDRESS NUMBER
-  TRAFFIC CALMING DISTRICT SIGNS
-  SPEED HUMPS AHEAD SIGN AND ADVISORY 15 MPH SPEED PLAQUE
-  SPEED HUMP AHEAD SIGN, CROSS STREET, AND ADVISORY 15 MPH SPEED PLAQUE
-  SPEED HUMP SIGN AND DOWNWARD DIAGONAL LEFT ARROW PLAQUE
- 123 +/- DISTANCE BETWEEN TRAFFIC CALMING MEASURES (CENTER TO CENTER) & DISTANCE BETWEEN TRAFFIC CALMING MEASURES AND END OF STREET

- NOTES:
- 1) NUMBER OF PARCELS IN AFFECTED AREA: 20
  - 2) STREET(S) IN AFFECTED AREA: LANDOVER DRIVE
  - 3) EDGE OF TRAFFIC CALMING MEASURE NOT TO ENCOACH WITHIN 5' OF DRIVEWAY RETURNS



DEKALB COUNTY  
TRANSPORTATION DIVISION  
TRAFFIC CALMING SECTION

DRAWN BY: AE  
REVIEWED BY: PGK  
REVIEWED BY:  
REVIEWED BY:

SCALE: NTS

Date: 3/13/2018

LANDOVER DRIVE  
DIST: 18TH LAND LOT: 51  
COMMISSION DISTRICTS: 2 & 6