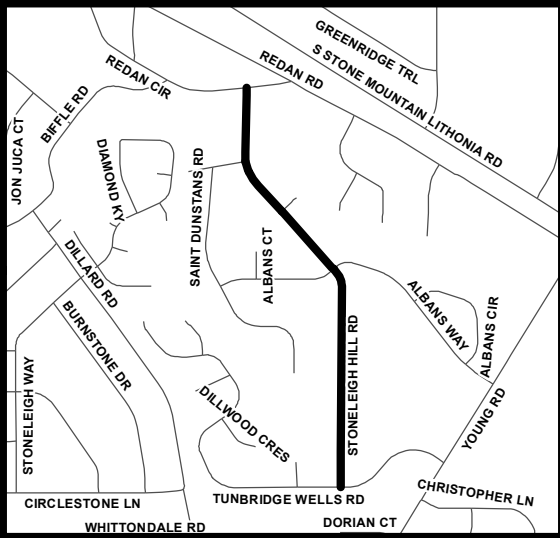
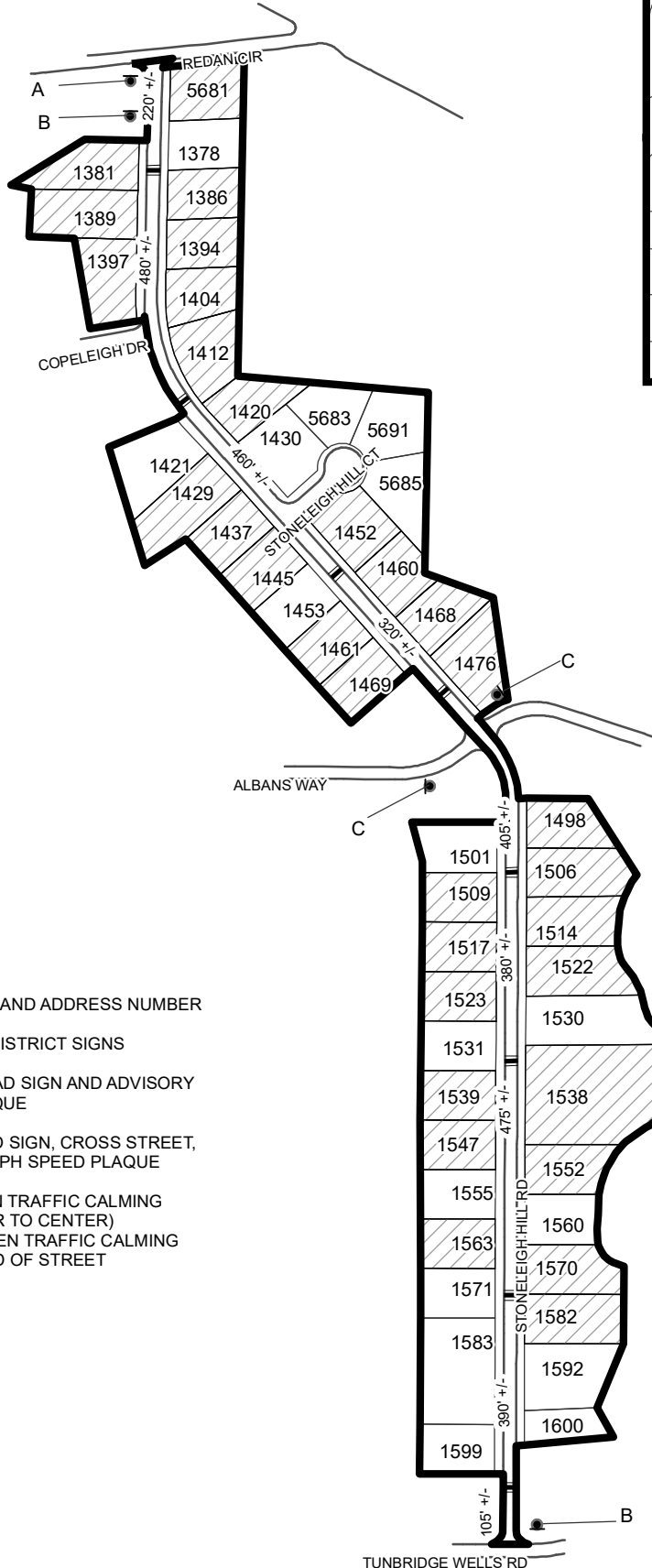


TRAFFIC CALMING DISTRICT 22-16-12



LEGEND

- AFFECTED AREA
- YES VOTES (32)
- SPEED TABLES (8)
- PARCEL BOUNDARY AND ADDRESS NUMBER
- TRAFFIC CALMING DISTRICT SIGNS
- SPEED HUMPS AHEAD SIGN AND ADVISORY 15 MPH SPEED PLAQUE
- SPEED HUMP AHEAD SIGN, CROSS STREET, AND ADVISORY 15 MPH SPEED PLAQUE

123 +/- DISTANCE BETWEEN TRAFFIC CALMING MEASURES (CENTER TO CENTER) & DISTANCE BETWEEN TRAFFIC CALMING MEASURES AND END OF STREET

NOTES:

- 1) NUMBER OF PARCELS IN AFFECTED AREA: 49
- 2) STREET(S) IN AFFECTED AREA: STONELEIGH HILL RD, REDAN CIRCLE & STONELEIGH HILL CT
- 3) EDGE OF TRAFFIC CALMING MEASURE NOT TO ENCROACH WITHIN 5' OF DRIVEWAY RETURNS

DEKALB COUNTY
TRANSPORTATION DIVISION
TRAFFIC CALMING SECTION

DRAWN BY: AE
REVIEWED BY: AE
REVIEWED BY:
REVIEWED BY:

SCALE: N.T.S.
Date: 11/15/2022

STONELEIGH HILL ROAD
DIST: 16 TH LAND LOTS: 61 & 68
COMMISSION DISTRICTS: 5 & 7