




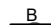


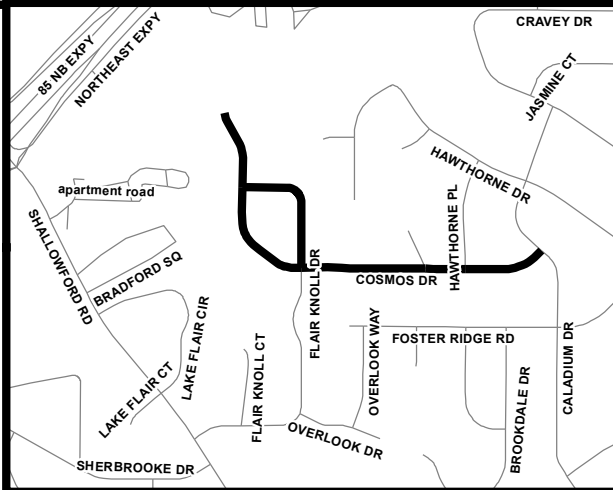
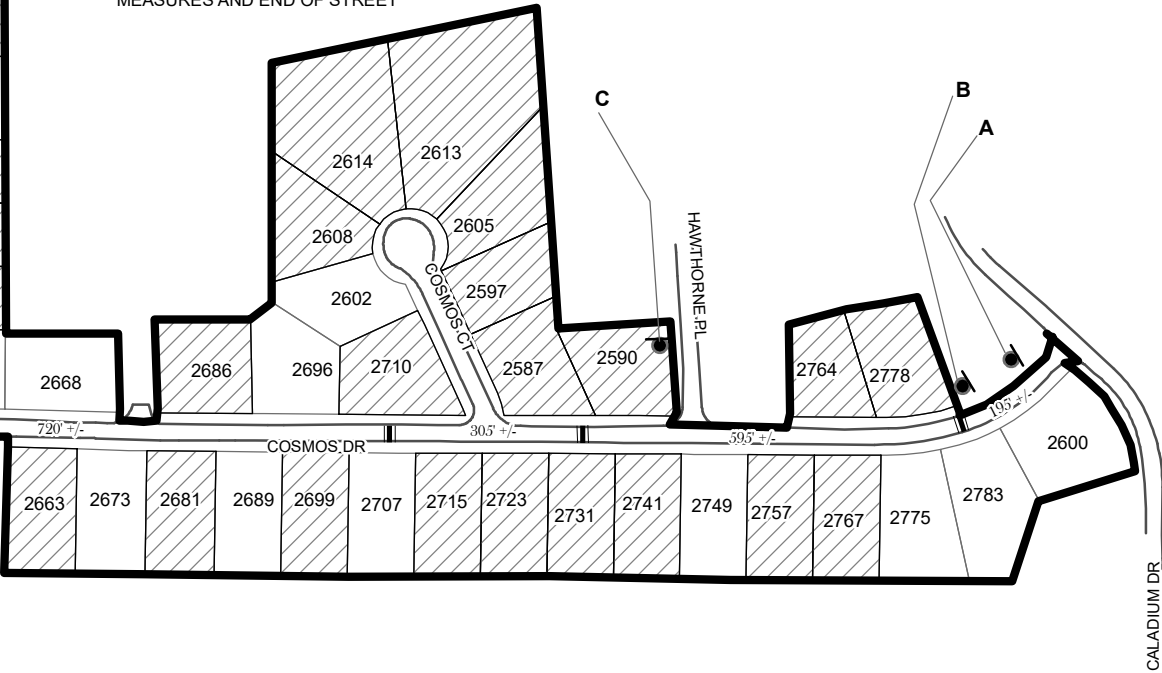
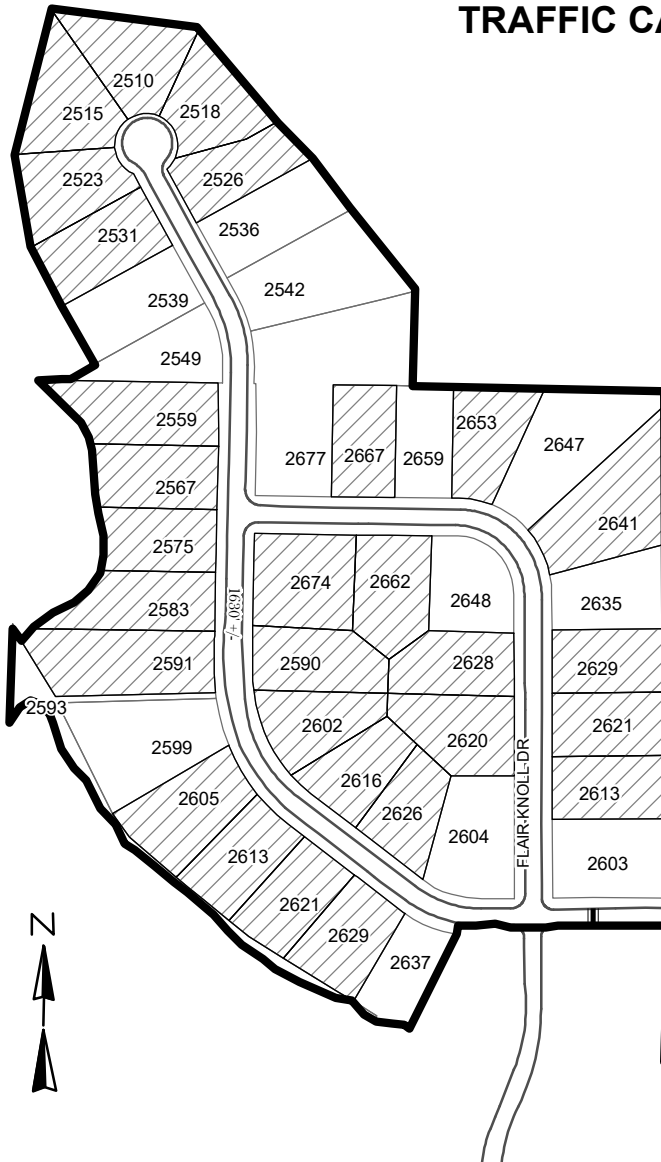


TRAFFIC CALMING DISTRICT 22-18-02

LEGEND

-  AFFECTED AREA
-  YES VOTES (49)
-  SPEED TABLES (4)
-  PARCEL BOUNDARY AND ADDRESS NUMBER
-  TRAFFIC CALMING DISTRICT SIGNS
-  SPEED HUMPS AHEAD SIGN AND ADVISORY 15 MPH SPEED PLAQUE
-  SPEED HUMP AHEAD SIGN, CROSS STREET, AND ADVISORY 15 MPH SPEED PLAQUE
-  123 +/- DISTANCE BETWEEN TRAFFIC CALMING MEASURES (CENTER TO CENTER) & DISTANCE BETWEEN TRAFFIC CALMING MEASURES AND END OF STREET



- NOTES:
- 1] NUMBER OF PARCELS IN AFFECTED AREA: 73
 - 2] STREET(S) IN AFFECTED AREA: COSMOS DR, COSMO CT, CALADIUM DR, FLAIR KNOLL DR & HAWTHORNE PL
 - 3] EDGE OF TRAFFIC CALMING MEASURE NOT TO ENCROACH WITHIN 5' OF DRIVEWAY RETURNS

DEKALB COUNTY
TRANSPORTATION DIVISION
TRAFFIC CALMING SECTION

DRAWN BY: AE
REVIEWED BY: AE
REVIEWED BY:
REVIEWED BY:

SCALE: N.T.S.
Date: 3/22/2022

COSMOS DRIVE
DIST: 18 TH LAND LOTS: 246 & 247
COMMISSION DISTRICTS: 2 & 6