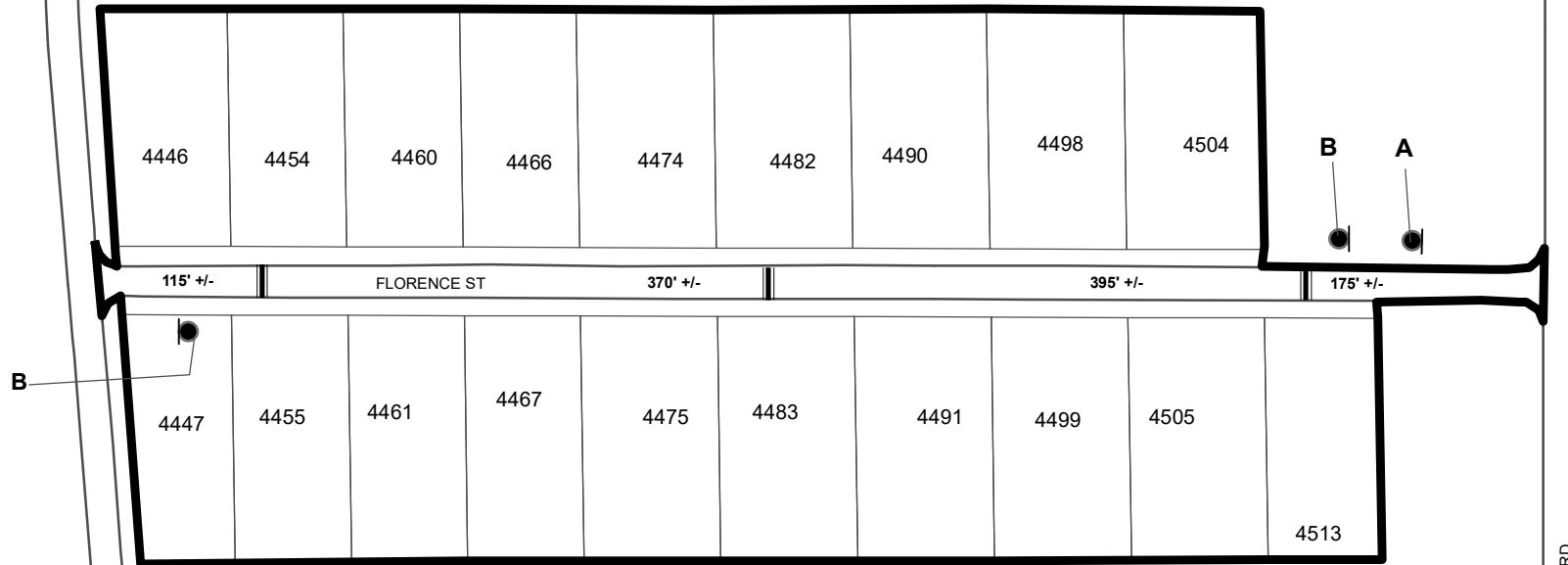


TRAFFIC CALMING DISTRICT 23-18-00



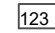

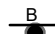
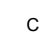
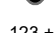


B

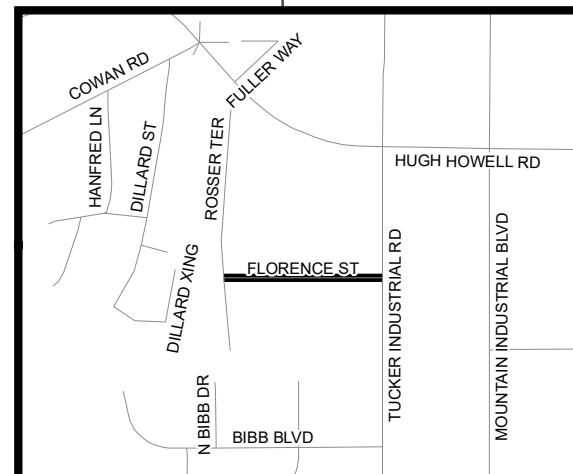
B

A

LEGEND

-  AFFECTED AREA
-  SPEED TABLES (3)
-  PARCEL BOUNDARY AND ADDRESS NUMBER
-  TRAFFIC CALMING DISTRICT SIGNS
-  SPEED HUMPS AHEAD SIGN AND ADVISORY 15 MPH SPEED PLAQUE
-  SPEED HUMP AHEAD SIGN, CROSS STREET, AND ADVISORY 15 MPH SPEED PLAQUE
-  123 +/- DISTANCE BETWEEN TRAFFIC CALMING MEASURES (CENTER TO CENTER) & DISTANCE BETWEEN TRAFFIC CALMING MEASURES AND END OF STREET

LOCATION MAP



NOTES:

- 1) NUMBER OF PARCELS IN AFFECTED AREA: 19
- 2) STREET(S) IN AFFECTED AREA: FLORENCE STREET
- 3) EDGE OF TRAFFIC CALMING MEASURE NOT TO ENCROACH WITHIN 5' OF DRIVEWAY RETURNS

DEKALB COUNTY
TRANSPORTATION DIVISION
TRAFFIC CALMING SECTION

DRAWN BY: AE

REVIEWED BY: AE

REVIEWED BY:

REVIEWED BY:

SCALE: N.T.S.

Date: 2/28/2023

FLORENCE STREET

DIST: 18 TH LAND LOT: 214

COMMISSION DISTRICTS: 1 & 7