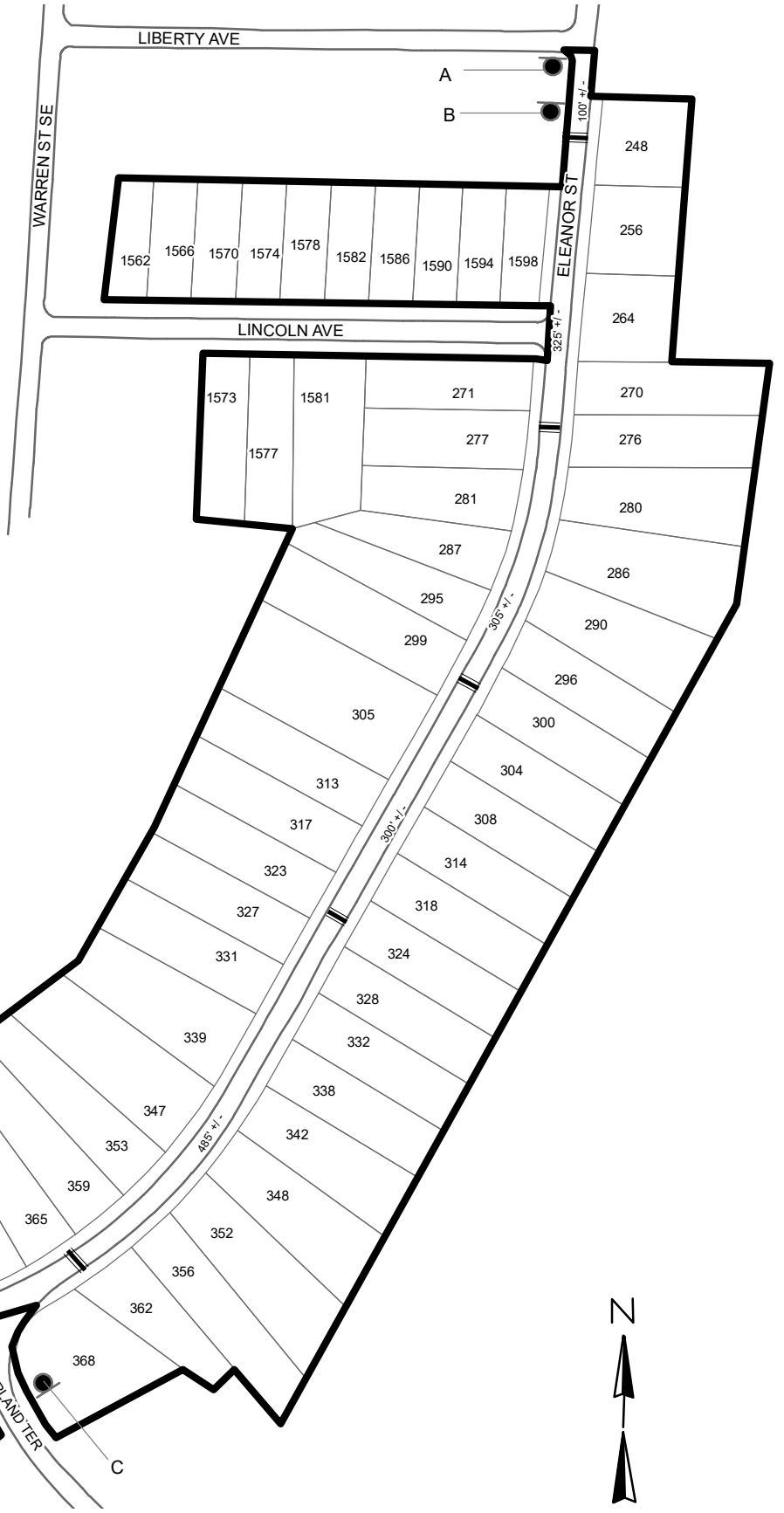
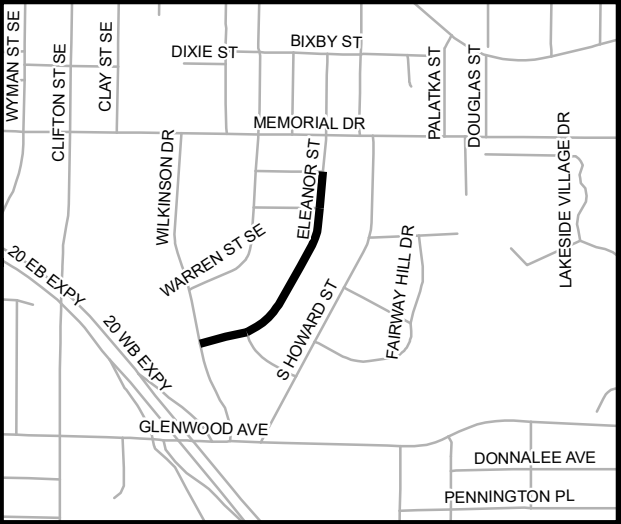


TRAFFIC CALMING DISTRICT 22-15-00



LEGEND

- AFFECTED AREA
 - SPEED TABLES (6)
 - 123 PARCEL BOUNDARY AND ADDRESS NUMBER
 - TRAFFIC CALMING DISTRICT SIGNS
 - SPEED HUMPS AHEAD SIGN AND ADVISORY 15 MPH SPEED PLAQUE
 - SPEED HUMP AHEAD SIGN, CROSS STREET, AND ADVISORY 15 MPH SPEED PLAQUE
- 123 +/- DISTANCE BETWEEN TRAFFIC CALMING MEASURES (CENTER TO CENTER) & DISTANCE BETWEEN TRAFFIC CALMING MEASURES AND END OF STREET

NOTES:

- 1) NUMBER OF PARCELS IN AFFECTED AREA: 60
- 2) STREET(S) IN AFFECTED AREA: ELEANOR ST, LINCOLN AVE & OVERLAND TER
- 3) EDGE OF TRAFFIC CALMING MEASURE NOT TO ENCROACH WITHIN 5' OF DRIVEWAY RETURNS



DEKALB COUNTY TRANSPORTATION DIVISION TRAFFIC CALMING SECTION	DRAWN BY: AE	SCALE: N.T.S. Date: 10/25/2022	ELEANOR STREET
	REVIEWED BY: AE		DIST: 15 TH LAND LOT: 179
	REVIEWED BY:	COMMISSION DISTRICTS: 3 & 6	
	REVIEWED BY:		