
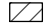

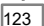



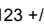
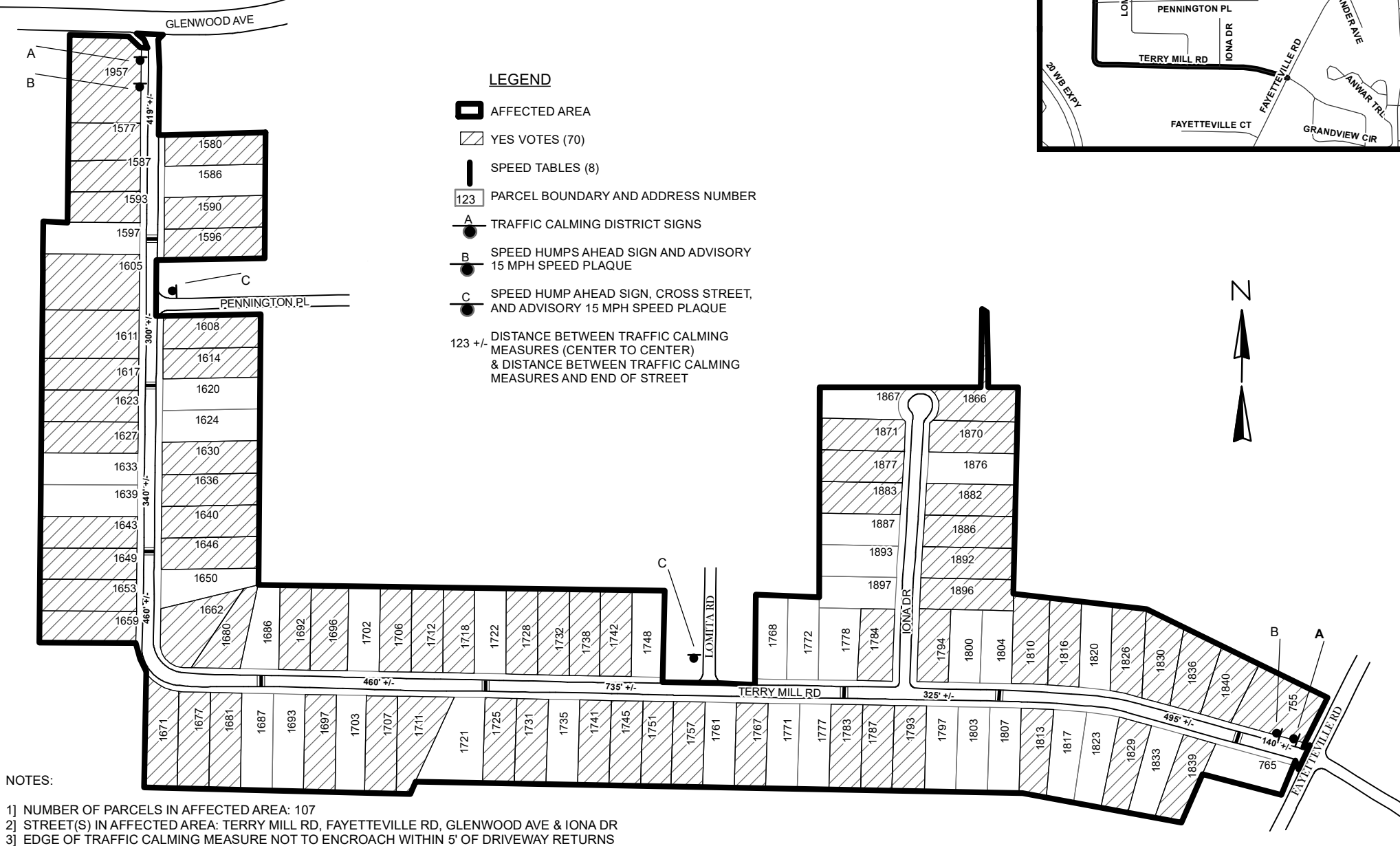
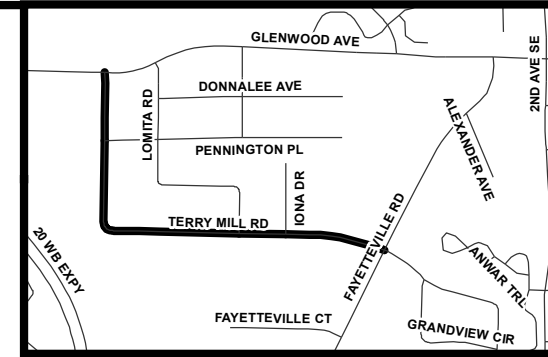


TRAFFIC CALMING DISTRICT 25-15-02

LEGEND

-  AFFECTED AREA
-  YES VOTES (70)
-  SPEED TABLES (8)
-  PARCEL BOUNDARY AND ADDRESS NUMBER
-  TRAFFIC CALMING DISTRICT SIGNS
-  SPEED HUMPS AHEAD SIGN AND ADVISORY 15 MPH SPEED PLAQUE
-  SPEED HUMP AHEAD SIGN, CROSS STREET, AND ADVISORY 15 MPH SPEED PLAQUE
-  123 +/-
DISTANCE BETWEEN TRAFFIC CALMING MEASURES (CENTER TO CENTER)
& DISTANCE BETWEEN TRAFFIC CALMING MEASURES AND END OF STREET



DEKALB COUNTY
TRANSPORTATION DIVISION
TRAFFIC CALMING SECTION

DRAWN BY: AE

REVIEWED BY: AE

REVIEWED BY:

REVIEWED BY:

SCALE: N.T.S.

Date: 5/13/2024

TERRY MILL RD

DIST: 15 TH LAND LOT: 173 & 174

COMMISSION DISTRICTS: 3 & 6