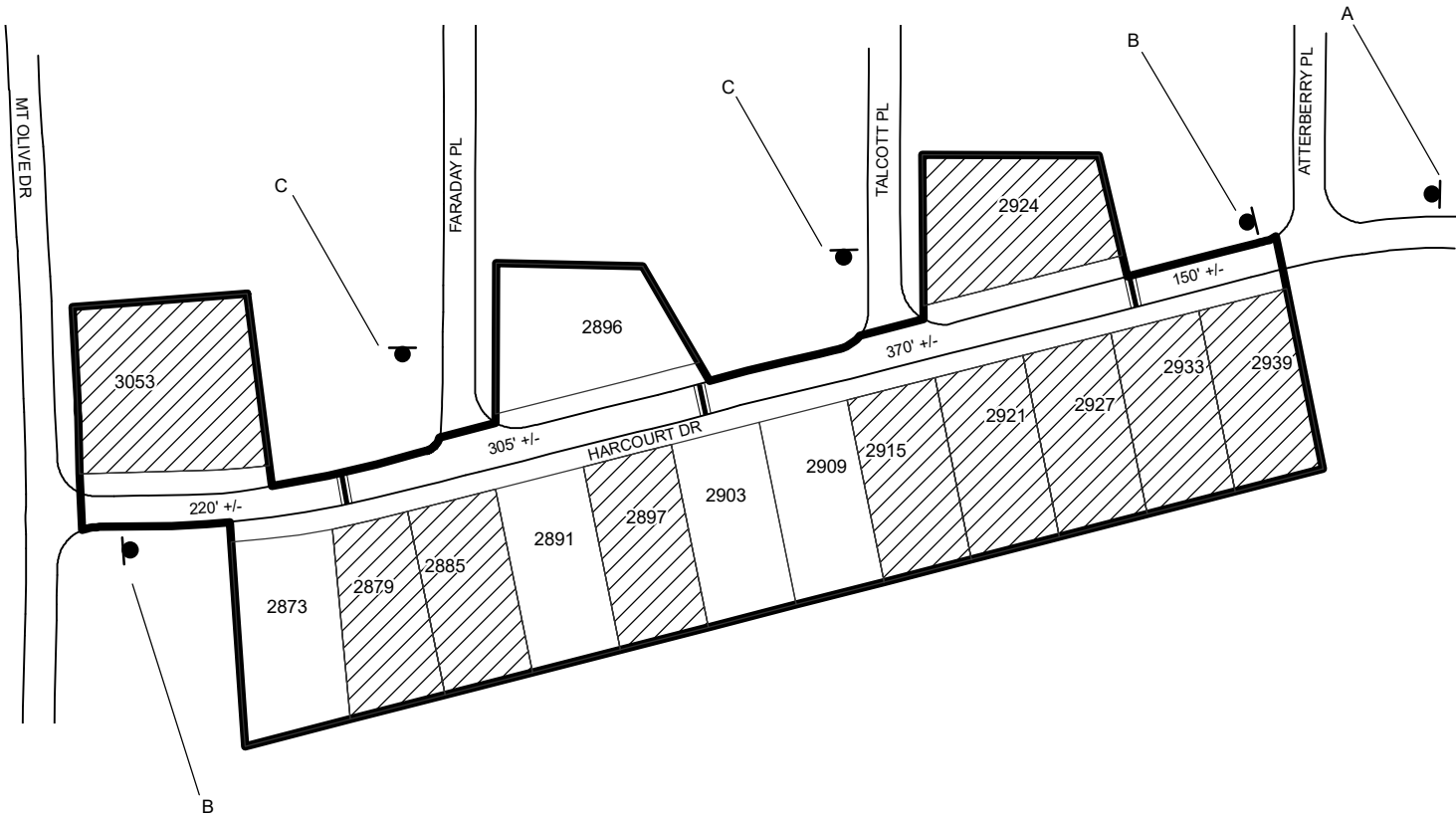


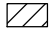
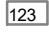

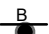
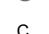


TRAFFIC CALMING DISTRICT 20-15-06

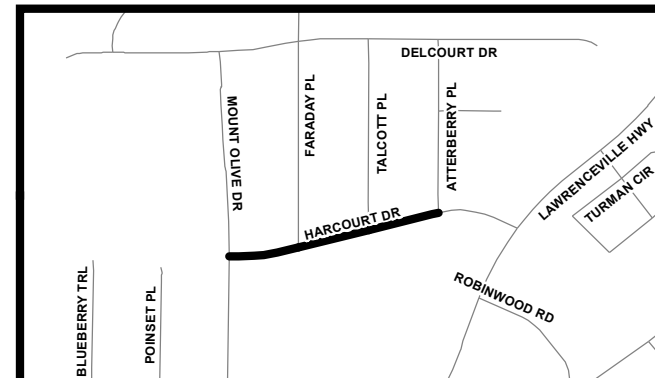


LEGEND

-  AFFECTED AREA
-  SPEED TABLES (3)
-  YES VOTES (10)
-  PARCEL BOUNDARY AND ADDRESS NUMBER
-  TRAFFIC CALMING DISTRICT SIGNS
-  SPEED HUMPS AHEAD SIGN AND ADVISORY 15 MPH SPEED PLAQUE
-  SPEED HUMP AHEAD SIGN, CROSS STREET, AND ADVISORY 15 MPH SPEED PLAQUE
- 123 +/- DISTANCE BETWEEN TRAFFIC CALMING MEASURES (CENTER TO CENTER) & DISTANCE BETWEEN TRAFFIC CALMING MEASURES AND END OF STREET

NOTES:

- 1) NUMBER OF PARCELS IN AFFECTED AREA: 15
- 2) STREET(S) IN AFFECTED AREA: HARCOURT DR, MT OLIVE DR
- 3) EDGE OF TRAFFIC CALMING MEASURE NOT TO ENCR OACH WITHIN 5' OF DRIVEWAY RETURNS



DEKALB COUNTY
TRANSPORTATION DIVISION
TRAFFIC CALMING SECTION

DRAWN BY: CH

REVIEWED BY: CH

REVIEWED BY:

REVIEWED BY:

SCALE: N.T.S.

Date: 3/24/2020

HARCOURT DR

DIST: 18 TH LAND LOT: 115 & 116

COMMISSION DISTRICTS: 4 & 6