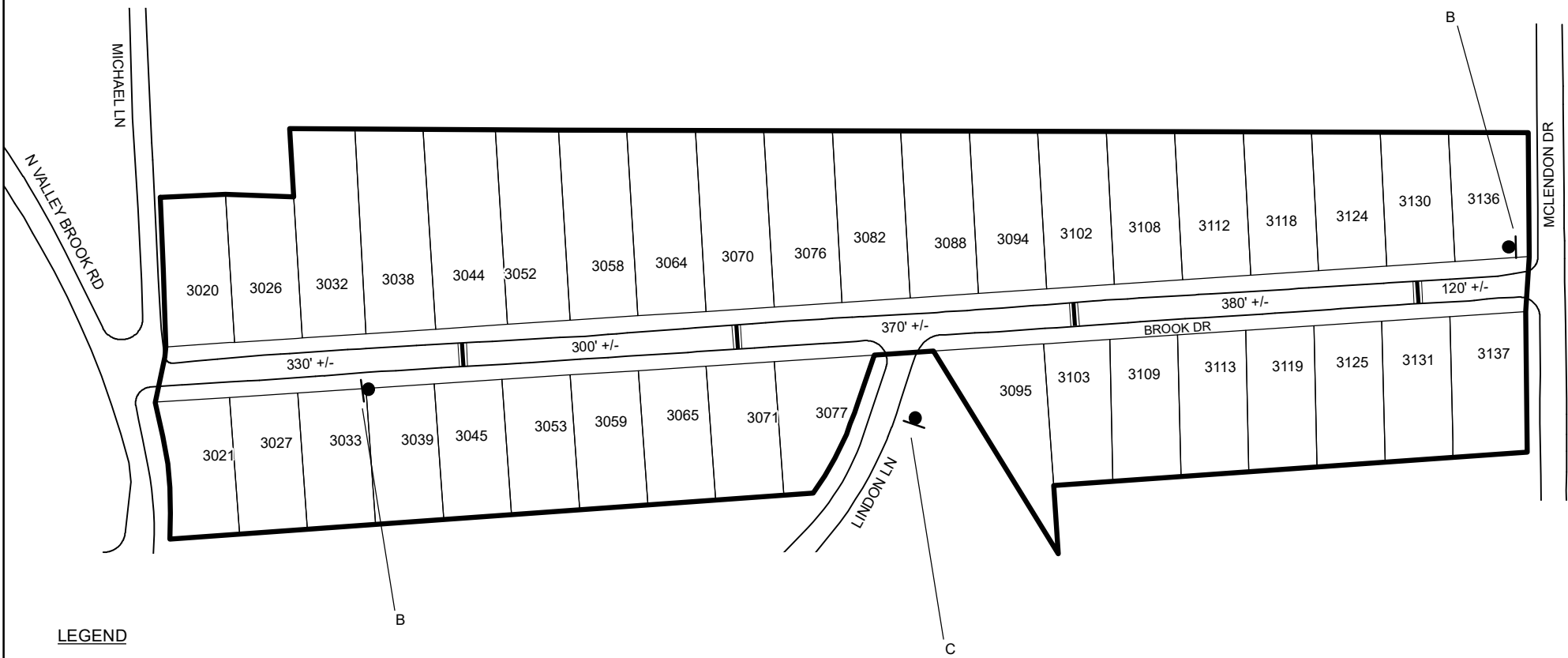



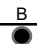
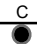
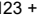


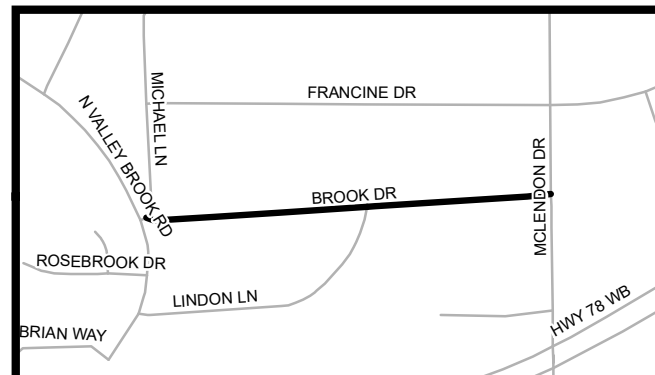
TRAFFIC CALMING DISTRICT 20-18-00



LEGEND

-  AFFECTED AREA
-  SPEED TABLES (4)
-  PARCEL BOUNDARY AND ADDRESS NUMBER
-  SPEED HUMPS AHEAD SIGN AND ADVISORY 15 MPH SPEED PLAQUE
-  SPEED HUMP AHEAD SIGN, CROSS STREET, AND ADVISORY 15 MPH SPEED PLAQUE
-  123 +/- DISTANCE BETWEEN TRAFFIC CALMING MEASURES (CENTER TO CENTER) & DISTANCE BETWEEN TRAFFIC CALMING MEASURES AND END OF STREET

- NOTES:
- 1) NUMBER OF PARCELS IN AFFECTED AREA: 38
 - 2) STREET(S) IN AFFECTED AREA: BROOK DR
 - 3) EDGE OF TRAFFIC CALMING MEASURE NOT TO ENCROACH WITHIN 5' OF DRIVEWAY RETURNS



DEKALB COUNTY
TRANSPORTATION DIVISION
TRAFFIC CALMING SECTION

DRAWN BY: CH
REVIEWED BY: CH
REVIEWED BY:
REVIEWED BY:

SCALE: N.T.S.
Date: 11/10/2020

BROOK DR
DIST: 18 TH LAND LOT: 116
COMMISSION DISTRICTS: 4 & 6