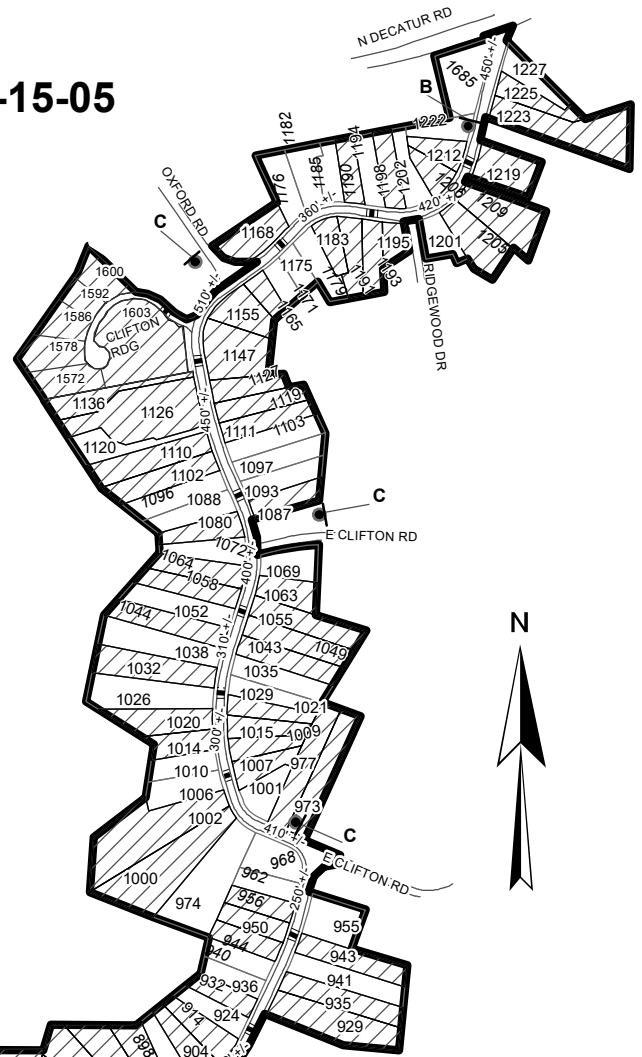
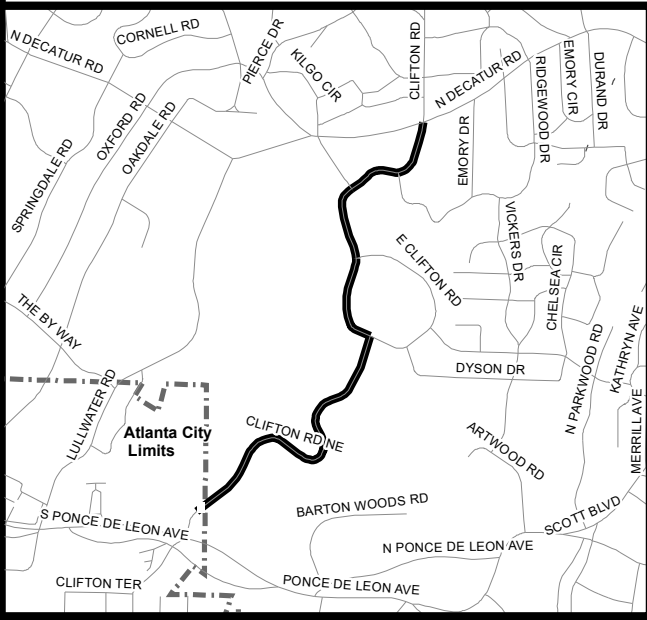
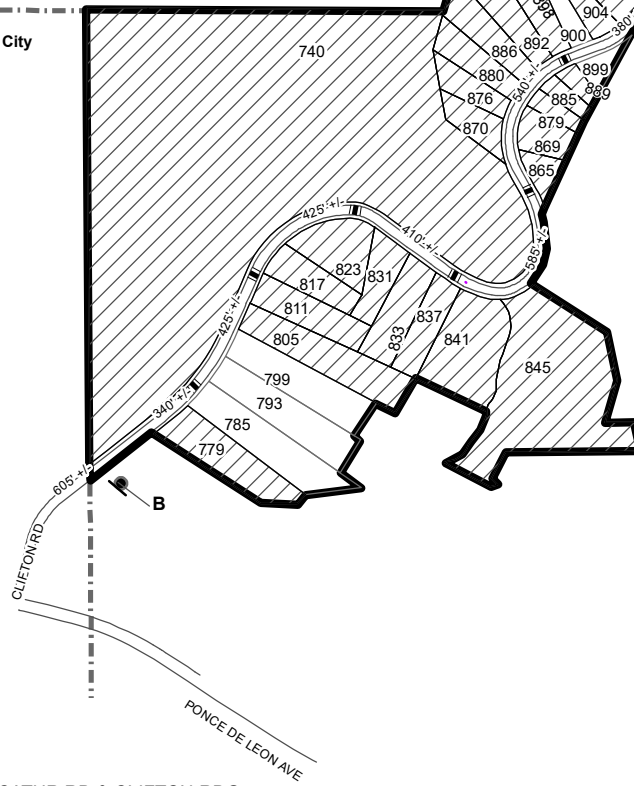


# TRAFFIC CALMING DISTRICT 25-15-05



- LEGEND**
- AFFECTED AREA
  - YES VOTES (81)
  - SPEED TABLES (17)
  - PARCEL BOUNDARY AND ADDRESS NUMBER
  - TRAFFIC CALMING DISTRICT SIGNS
  - SPEED HUMPS AHEAD SIGN AND ADVISORY 15 MPH SPEED PLAQUE
  - SPEED HUMP AHEAD SIGN, CROSS STREET, AND ADVISORY 15 MPH SPEED PLAQUE
  - 123' +/- DISTANCE BETWEEN TRAFFIC CALMING MEASURES (CENTER TO CENTER) & DISTANCE BETWEEN TRAFFIC CALMING MEASURES AND END OF STREET



NOTES:  
 1) NUMBER OF PARCELS IN AFFECTED AREA: 122  
 2) STREET(S) IN AFFECTED AREA: CLIFTON ROAD, N DECATUR RD & CLIFTON RDG  
 3) EDGE OF TRAFFIC CALMING MEASURE NOT TO ENCROACH WITHIN 5' OF DRIVEWAY RETURNS

DEKALB COUNTY  
 TRANSPORTATION DIVISION  
 TRAFFIC CALMING SECTION

DRAWN BY: AE  
 REVIEWED BY:  
 REVIEWED BY: AE  
 REVIEWED BY:

SCALE: N.T.S.  
 DATE: 8/26/2025

CLIFTON ROAD  
 DIST: 15TH & 18TH LAND LOT: 243 & 3  
 COMMISSION DISTRICTS: 2 & 6