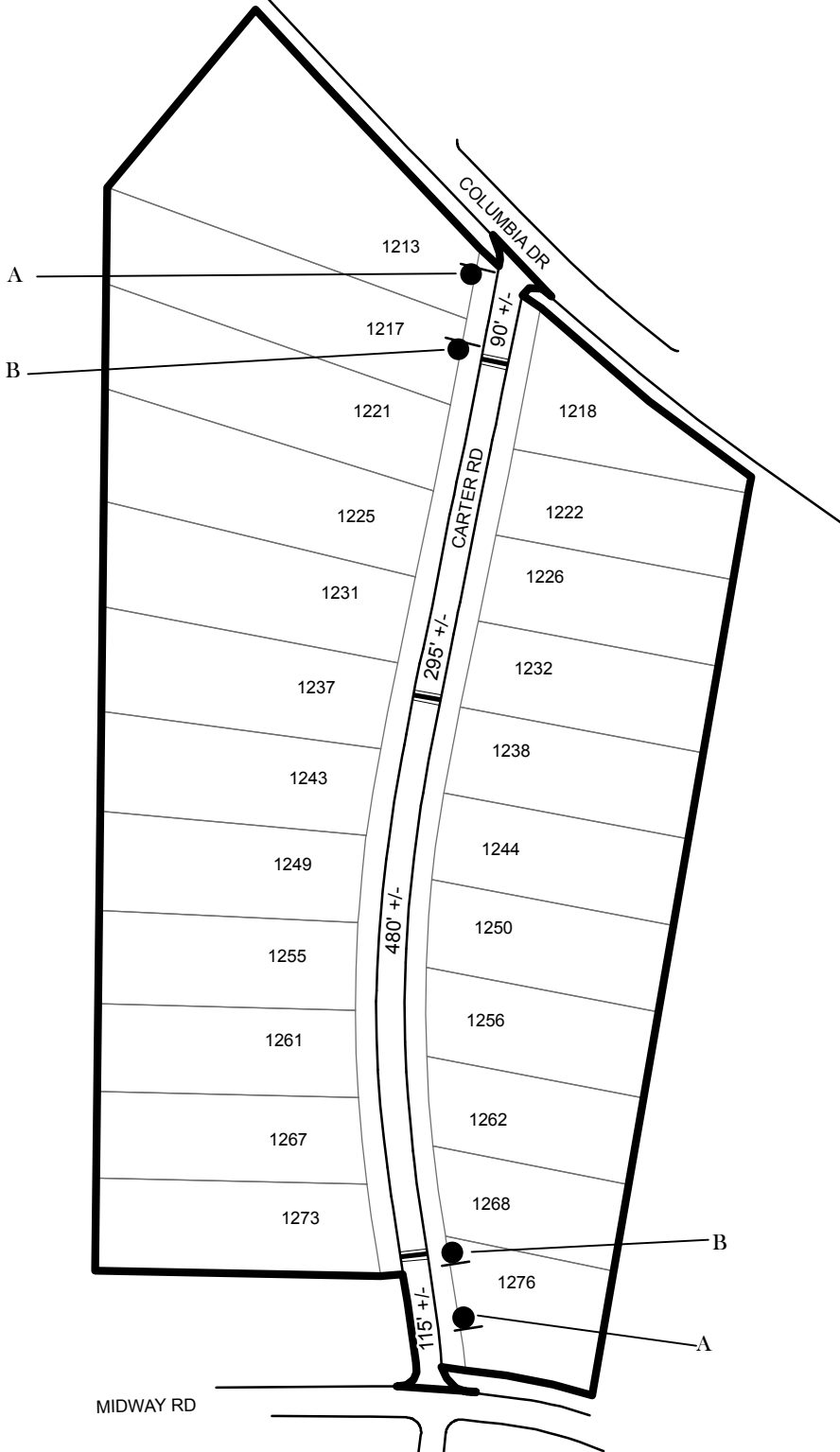
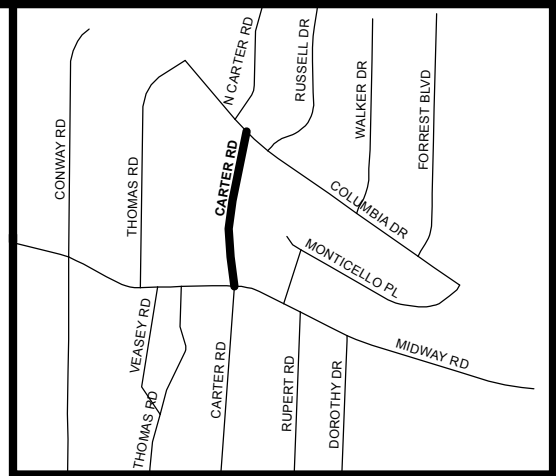


# TRAFFIC CALMING DISTRICT 17-15-00



### LEGEND

- AFFECTED AREA
- SPEED TABLES (3)
- PARCEL BOUNDARY AND ADDRESS NUMBER
- TRAFFIC CALMING DISTRICT SIGNS
- SPEED HUMPS AHEAD SIGN AND ADVISORY 15 MPH SPEED PLAQUE
- SPEED HUMP AHEAD SIGN, CROSS STREET, AND ADVISORY 15 MPH SPEED PLAQUE
- 123 +/- DISTANCE BETWEEN TRAFFIC CALMING MEASURES (CENTER TO CENTER) & DISTANCE BETWEEN TRAFFIC CALMING MEASURES AND END OF STREET

**NOTES:**

- 1] NUMBER OF PARCELS IN AFFECTED AREA: 23
- 2] STREET(S) IN AFFECTED AREA: CARTER ROAD
- 3] EDGE OF TRAFFIC CALMING MEASURE NOT TO ENCROACH WITHIN 5' OF DRIVEWAY RETURNS

**DEKALB COUNTY  
TRANSPORTATION DIVISION  
TRAFFIC CALMING SECTION**

DRAWN BY: AE  
REVIEWED BY: PGK  
REVIEWED BY:  
REVIEWED BY:

SCALE: NTS  
Date: 7/27/2017

CARTER ROAD  
DIST: 15 TH LAND LOT: 216  
COMMISSION DISTRICTS: 3 & 6