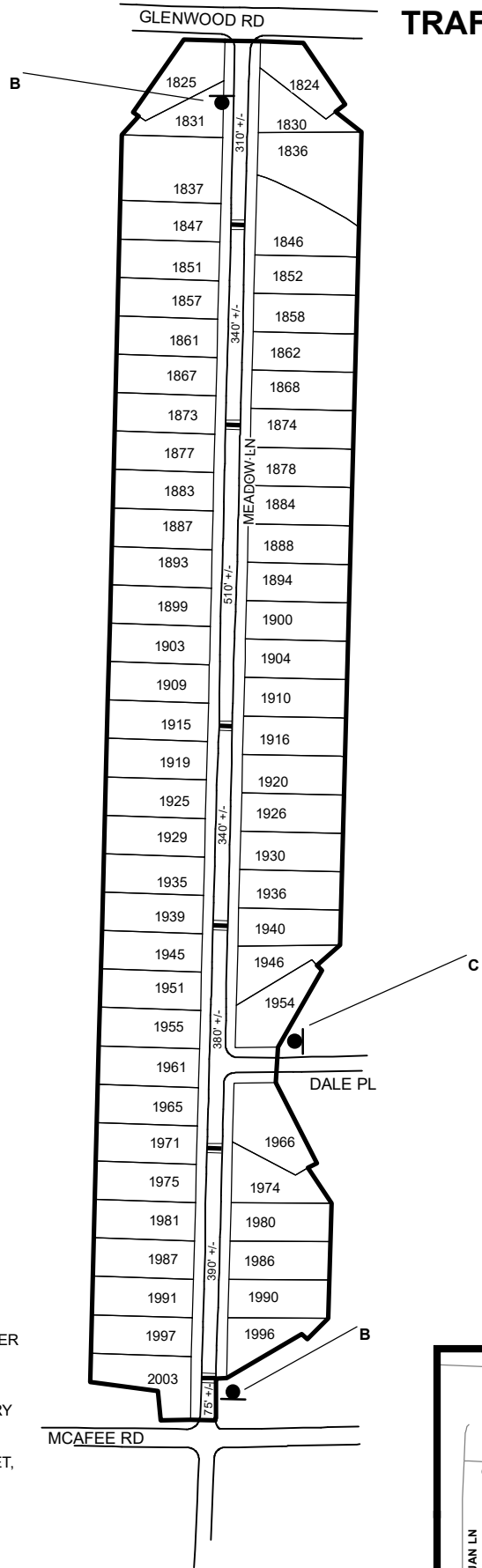


# TRAFFIC CALMING DISTRICT 20-15-00



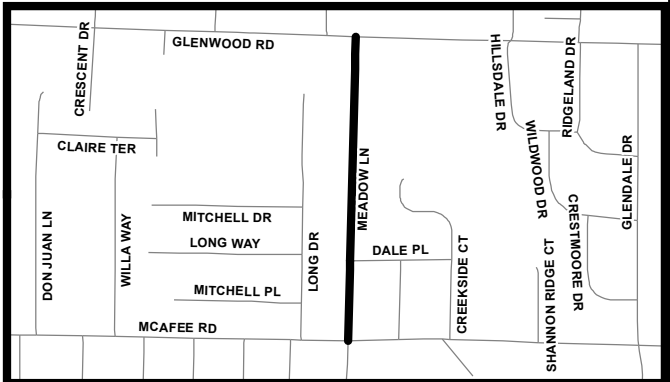
### LEGEND

- AFFECTED AREA
- SPEED TABLES (6)
- PARCEL BOUNDARY AND ADDRESS NUMBER
- A TRAFFIC CALMING DISTRICT SIGNS
- B SPEED HUMPS AHEAD SIGN AND ADVISORY 15 MPH SPEED PLAQUE
- C SPEED HUMP AHEAD SIGN, CROSS STREET, AND ADVISORY 15 MPH SPEED PLAQUE

123 +/- DISTANCE BETWEEN TRAFFIC CALMING MEASURES (CENTER TO CENTER) & DISTANCE BETWEEN TRAFFIC CALMING MEASURES AND END OF STREET

### NOTES:

- 1] NUMBER OF PARCELS IN AFFECTED AREA: 64
- 2] STREET(S) IN AFFECTED AREA: MEADOW LN
- 3] EDGE OF TRAFFIC CALMING MEASURE NOT TO ENCROACH WITHIN 5' OF DRIVEWAY RETURNS



DEKALB COUNTY TRANSPORTATION DIVISION TRAFFIC CALMING SECTION	DRAWN BY: CH	SCALE: N.T.S.	MEADOW LN  DIST: 15 TH LAND LOT: 168  COMMISSION DISTRICTS: 3 & 7
	REVIEWED BY: CH		
	REVIEWED BY:	Date: 11/17/2020	
	REVIEWED BY:		