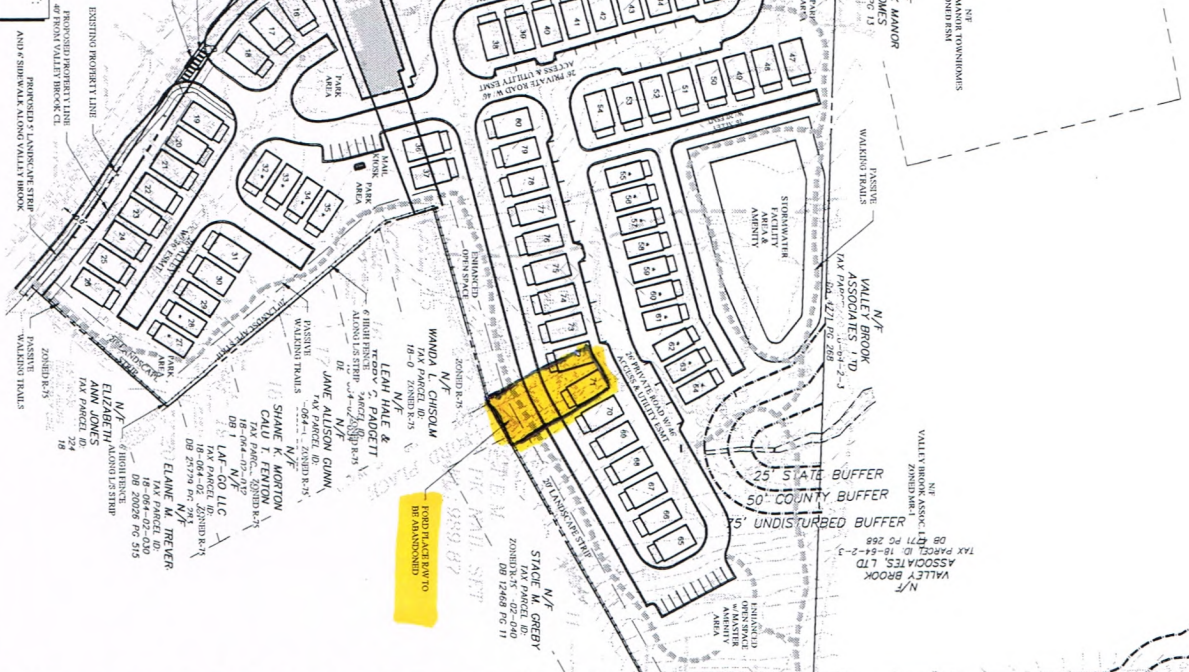
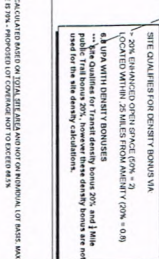


24 HOUR CONTACT
 BRYAN FLINT
 404-867-2512



SITE NOTES:
 1. ALL UTILITIES SHOWN ARE BASED ON RECORD DRAWINGS AND FIELD SURVEY.
 2. THE DEVELOPER SHALL BE RESPONSIBLE FOR OBTAINING ALL NECESSARY PERMITS.
 3. THE DEVELOPER SHALL MAINTAIN ACCESS TO ALL ADJACENT PROPERTIES AT ALL TIMES.
 4. THE DEVELOPER SHALL MAINTAIN ALL EXISTING UTILITIES AND STRUCTURES.
 5. THE DEVELOPER SHALL MAINTAIN ALL EXISTING TREES AND LANDSCAPING.
 6. THE DEVELOPER SHALL MAINTAIN ALL EXISTING DRIVEWAYS AND SIDEWALKS.
 7. THE DEVELOPER SHALL MAINTAIN ALL EXISTING FENCES AND BARRIERS.
 8. THE DEVELOPER SHALL MAINTAIN ALL EXISTING SIGNAGE AND MARKINGS.
 9. THE DEVELOPER SHALL MAINTAIN ALL EXISTING UTILITIES AND STRUCTURES.
 10. THE DEVELOPER SHALL MAINTAIN ALL EXISTING TREES AND LANDSCAPING.
 11. THE DEVELOPER SHALL MAINTAIN ALL EXISTING DRIVEWAYS AND SIDEWALKS.
 12. THE DEVELOPER SHALL MAINTAIN ALL EXISTING FENCES AND BARRIERS.
 13. THE DEVELOPER SHALL MAINTAIN ALL EXISTING SIGNAGE AND MARKINGS.



SITE DATA:
 SITE AREA: 12.246 ACRES
 EXISTING ZONING: R-5
 PROPOSED ZONING: R-5
 DENSITY CALCULATIONS:
 48 UNITS
 61 UNITS
 80 UNITS
 82 UNITS

FRONT SETBACK SUMMARY:
 10 FEET
REAR SETBACK SUMMARY:
 10 FEET
SIDE SETBACK SUMMARY:
 10 FEET

MIN. OPEN SPACE REQUIRED:
 4.89 ACRES
MIN. OPEN SPACE PROVIDED:
 2.45 ACRES

MIN. LOT COVERAGE:
 70%
MIN. LOT COVERAGE PROVIDED:
 65.2%

MIN. DRIVEWAY WIDTH:
 10 FEET
MIN. DRIVEWAY WIDTH PROVIDED:
 10 FEET

MIN. DRIVEWAY SPACING:
 10 FEET
MIN. DRIVEWAY SPACING PROVIDED:
 10 FEET

MIN. DRIVEWAY WIDTH:
 10 FEET
MIN. DRIVEWAY WIDTH PROVIDED:
 10 FEET

MIN. DRIVEWAY SPACING:
 10 FEET
MIN. DRIVEWAY SPACING PROVIDED:
 10 FEET

MIN. DRIVEWAY WIDTH:
 10 FEET
MIN. DRIVEWAY WIDTH PROVIDED:
 10 FEET

MIN. DRIVEWAY SPACING:
 10 FEET
MIN. DRIVEWAY SPACING PROVIDED:
 10 FEET

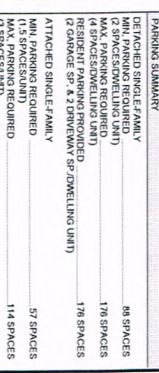
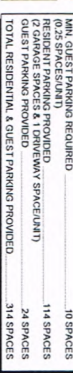
MIN. DRIVEWAY WIDTH:
 10 FEET
MIN. DRIVEWAY WIDTH PROVIDED:
 10 FEET

MIN. DRIVEWAY SPACING:
 10 FEET
MIN. DRIVEWAY SPACING PROVIDED:
 10 FEET

MIN. DRIVEWAY WIDTH:
 10 FEET
MIN. DRIVEWAY WIDTH PROVIDED:
 10 FEET

MIN. DRIVEWAY SPACING:
 10 FEET
MIN. DRIVEWAY SPACING PROVIDED:
 10 FEET

MIN. DRIVEWAY WIDTH:
 10 FEET
MIN. DRIVEWAY WIDTH PROVIDED:
 10 FEET



SITE DATA:
 SITE AREA: 12.246 ACRES
 EXISTING ZONING: R-5
 PROPOSED ZONING: R-5
 DENSITY CALCULATIONS:
 48 UNITS
 61 UNITS
 80 UNITS
 82 UNITS

FRONT SETBACK SUMMARY:
 10 FEET
REAR SETBACK SUMMARY:
 10 FEET
SIDE SETBACK SUMMARY:
 10 FEET

MIN. OPEN SPACE REQUIRED:
 4.89 ACRES
MIN. OPEN SPACE PROVIDED:
 2.45 ACRES

MIN. LOT COVERAGE:
 70%
MIN. LOT COVERAGE PROVIDED:
 65.2%

MIN. DRIVEWAY WIDTH:
 10 FEET
MIN. DRIVEWAY WIDTH PROVIDED:
 10 FEET

MIN. DRIVEWAY SPACING:
 10 FEET
MIN. DRIVEWAY SPACING PROVIDED:
 10 FEET

MIN. DRIVEWAY WIDTH:
 10 FEET
MIN. DRIVEWAY WIDTH PROVIDED:
 10 FEET

MIN. DRIVEWAY SPACING:
 10 FEET
MIN. DRIVEWAY SPACING PROVIDED:
 10 FEET

MIN. DRIVEWAY WIDTH:
 10 FEET
MIN. DRIVEWAY WIDTH PROVIDED:
 10 FEET

MIN. DRIVEWAY SPACING:
 10 FEET
MIN. DRIVEWAY SPACING PROVIDED:
 10 FEET

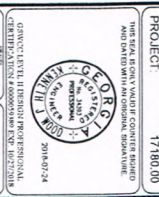
MIN. DRIVEWAY WIDTH:
 10 FEET
MIN. DRIVEWAY WIDTH PROVIDED:
 10 FEET

MIN. DRIVEWAY SPACING:
 10 FEET
MIN. DRIVEWAY SPACING PROVIDED:
 10 FEET

MIN. DRIVEWAY WIDTH:
 10 FEET
MIN. DRIVEWAY WIDTH PROVIDED:
 10 FEET

MIN. DRIVEWAY SPACING:
 10 FEET
MIN. DRIVEWAY SPACING PROVIDED:
 10 FEET

MIN. DRIVEWAY WIDTH:
 10 FEET
MIN. DRIVEWAY WIDTH PROVIDED:
 10 FEET



REVISIONS:

NO.	DATE	BY	DESCRIPTION

VALLEY BROOK RD @ FORD PLACE
 A MASTER PLANNED RESIDENTIAL DEVELOPMENT
 FOR
 ARROWHEAD REAL ESTATE PARTNERS
 350 RESEARCH CT
 SUITE 100
 PEACHTREE CORNERS, GEORGIA 30092
 CONTACT: 404-867-8278

PLANNERS AND ENGINEERS COLLABORATIVE
 SITE PLANNING • LANDSCAPE ARCHITECTURE • CIVIL ENGINEERING • LAND SURVEYING
 350 RESEARCH COURT • PEACHTREE CORNERS, GEORGIA 30092 • (770) 451-2241 • FAX (770) 451-3915

WE PROVIDE SOLUTIONS™

PLANNERS AND ENGINEERS COLLABORATIVE

PLANNING • LANDSCAPE ARCHITECTURE • CIVIL ENGINEERING • LAND SURVEYING

350 RESEARCH COURT • PEACHTREE CORNERS, GEORGIA 30092 • (770) 451-2241 • FAX (770) 451-3915

WE PROVIDE SOLUTIONS™

PLANNERS AND ENGINEERS COLLABORATIVE

PLANNING • LANDSCAPE ARCHITECTURE • CIVIL ENGINEERING • LAND SURVEYING

350 RESEARCH COURT • PEACHTREE CORNERS, GEORGIA 30092 • (770) 451-2241 • FAX (770) 451-3915

WE PROVIDE SOLUTIONS™

PLANNERS AND ENGINEERS COLLABORATIVE

PLANNING • LANDSCAPE ARCHITECTURE • CIVIL ENGINEERING • LAND SURVEYING

350 RESEARCH COURT • PEACHTREE CORNERS, GEORGIA 30092 • (770) 451-2241 • FAX (770) 451-3915