

**DeKalb County
Department of Purchasing and Contracting
Change Order Request Form**

User Department: PW – Sanitation	From: Tracy A. Hutchinson
ITB No.: 18-100918	Title: Purchase of Mobile Office Trailers
Effective Date: May 10, 2018	Expiration Date: May 31, 2021
Contract APPROVED Amount: \$2,628,312.50	

Contractor(s)	Contract No.	Amount Spent
Mobile Modular Management Corp.	1109393	\$2,573,312.50
Total Amount Spent to Date: \$2,573,312.50		

User Department Recommendation:

PW – Sanitation is requesting for additional \$76,050.25 to purchase a mobile office trailer to provide office space for Sanitation staff at the South Collection Lot located at 1755 Fairlake Dr., Lithonia, GA 30058. The total cost of the new office trailer is, \$131,050.25:

Approved amount – 2 nd renewal:	\$55,000.00
Additional Cost – South Lot Double Trailers:	\$76,050.25
Total	\$131,050.25

Tracy A. Hutchinson _____ 11/23/20 _____
 Department Director Signature Date

Funding: General Enterprise 3 Digit Fund Code _____
 CIP Line Item No. (if applicable): 542 – Sanitation Capital Project

Purchasing & Contracting Approval: Phyllis A. Head
 Digitally signed by Phyllis A. Head
 Date: 2020.11.23 12:14:34 -05'00'



Mobile Modular Management Corporation
 4301-C Stuart Andrew Blvd.
 Charlotte, NC 28217
 Phone: (678) 714-0744
 Fax: (704) 519-4001
 www.mobilemodular.com

Sale Quotation and Agreement

Quotation Number: 348097
 Customer PO/Ref:
 Date of Quote: 11/19/2020

Sign up for the Easy Sale Option (see end of document for details)

Customer Information	Site Information	Mobile Modular Contact
Dekalb County Government 1300 Commerce Drive 2nd floor Decatur, GA 30030 Tina Phan tphan@dekalbcountyga.gov Phone: (404) 294-2708	Dekalb County Government 1755 Fairlake Dr. Lithonia, GA 30058	Questions? Contact: Clinton Buchanan clinton.buchanan@mobilemodular.com Direct Phone: (704) 519-4000 Fax: (704) 519-4001

Product Information	Qty	Purchase Price	Extended Purchase Price	Taxable
Office, 36x56	1	\$93,000.00	\$93,000.00	N
<i>Flexible Configuration Multiplex. Size excludes 4' towbar.</i>				
Ramp, Custom Plan	1	\$17,122.00	\$17,122.00	N
Charges Upon Delivery	Qty	Charge Each	Total One Time	Taxable
Office, 36x56				
Block and Level Building (A7)	1	\$8,132.00	\$8,132.00	N
Delivery Haulage 12 wide	3	\$1,410.75	\$4,232.25	N
Installation, Awning	2	\$2,400.00	\$4,800.00	N
<i>Pricing is based on (1) 6'x8' Canopy over each exterior door. **Price does not include permitting**</i>				
Installation, Skirting, Cement Board	184	\$14.00	\$2,576.00	N
Modification on Site	132	\$9.00	\$1,188.00	N
<i>Installation of Gutters and Downspouts Gutter and Downspouts Pricing is based on Gutter on each end and (2) downspouts per gutter with turn out and splash block.</i>				
			<u>\$20,928.25</u>	
Total Estimated Charges				
Subtotal			\$131,050.25	
Taxes			\$0.00	
Total Charges (including tax)			<u>\$131,050.25</u>	

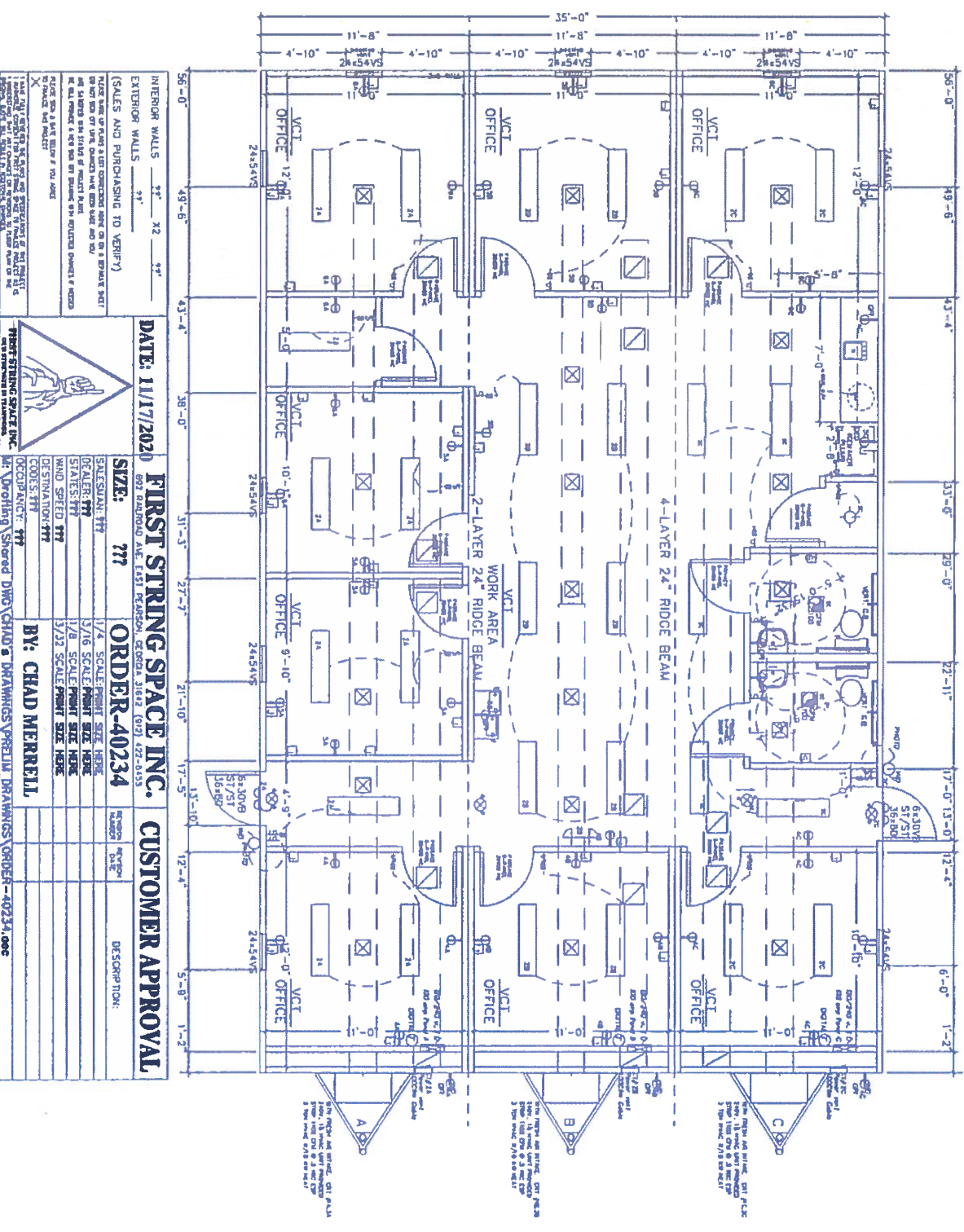
Special Notes

ABS Pads in Lieu of Poured Footers: Modular building to be installed on ABS pads in lieu of poured footers, approved plans are available and subject to local building department approval.

Block/Level: Price assumes building is installed using Mobile Modular standard foundation. Mobile Modular assumes installation on the minimum foundation design criteria/tolerances. For DSA buildings, it is assumed building will be installed on the minimum amount of foundation lumber per the applicable DSA approved stockpile drawings and site will not exceed 4-1/2" out of level. Additional material and labor charges apply for installing buildings above minimum foundation design criteria, raising buildings to meet specific finish floor elevations, raising building level to adjacent buildings, landings, walkways, transitions, etc.

General: Customer's site must be dry, compacted, level and accessible by normal truck delivery. Pricing does not include any clearing or grading of sites, obstruction removal, site or final building clean up, any asphalt transitions, dolly, crane, forklift, electrical or plumbing connections, window coverings, furniture, casework, appliances, doorstops, phone or data lines, gutters, downspouts or tie-in, temporary power, temporary fencing, traffic control, flagmen, soil and/or pull test, custom engineering, fees associated with inspections, city or county submittals and/or use permits, security screens, door bars and any item not specifically listed as being included.

Floor Plans



INTERIOR WALLS 7/2" X 2" 7/2"
 EXTERIOR WALLS 7/2" X 2" 7/2"
 (SALES AND PURCHASING TO VERIFY)
 THIS PLAN IS BASED ON A SET OF CONSTRUCTION DOCUMENTS ON A 3/16" SCALE.
 TO BE USED FOR CONSTRUCTION OF THE WORK SHOWN AND FOR ALL OTHER WORK NOT SHOWN.
 IT IS THE RESPONSIBILITY OF THE USER TO OBTAIN ALL NECESSARY PERMITS AND TO VERIFY ALL CONDITIONS AND CONDITIONS OF THE SITE.
 THE USER SHALL BE RESPONSIBLE FOR OBTAINING ALL NECESSARY PERMITS AND TO VERIFY ALL CONDITIONS AND CONDITIONS OF THE SITE.
 THE USER SHALL BE RESPONSIBLE FOR OBTAINING ALL NECESSARY PERMITS AND TO VERIFY ALL CONDITIONS AND CONDITIONS OF THE SITE.



DATE: 11/17/2021
FIRST STRING SPACE INC.
 892 BARNBOLD AVE. EAST PEPPER, GEORGIA 31824 (927) 422-0333
SIZE: 777
ORDER-40234
CUSTOMER APPROVAL

SALES/SCALE	PRINT SIZE HERE	REVISION	DATE	DESCRIPTION:
1/4" SCALE	PRINT SIZE HERE			
3/8" SCALE	PRINT SIZE HERE			
1/2" SCALE	PRINT SIZE HERE			
3/4" SCALE	PRINT SIZE HERE			
1" SCALE	PRINT SIZE HERE			

BY: CHAD MERRELL

1. THIS PLAN IS BASED ON A SET OF CONSTRUCTION DOCUMENTS ON A 3/16" SCALE.
 2. TO BE USED FOR CONSTRUCTION OF THE WORK SHOWN AND FOR ALL OTHER WORK NOT SHOWN.
 3. IT IS THE RESPONSIBILITY OF THE USER TO OBTAIN ALL NECESSARY PERMITS AND TO VERIFY ALL CONDITIONS AND CONDITIONS OF THE SITE.
 4. THE USER SHALL BE RESPONSIBLE FOR OBTAINING ALL NECESSARY PERMITS AND TO VERIFY ALL CONDITIONS AND CONDITIONS OF THE SITE.
 5. THE USER SHALL BE RESPONSIBLE FOR OBTAINING ALL NECESSARY PERMITS AND TO VERIFY ALL CONDITIONS AND CONDITIONS OF THE SITE.

SECTION A-A
 1" = 1'-0"
 1. 12" x 12" JOIST
 2. 12" x 12" JOIST
 3. 12" x 12" JOIST
 4. 12" x 12" JOIST
 5. 12" x 12" JOIST
 6. 12" x 12" JOIST
 7. 12" x 12" JOIST
 8. 12" x 12" JOIST
 9. 12" x 12" JOIST
 10. 12" x 12" JOIST
 11. 12" x 12" JOIST
 12. 12" x 12" JOIST
 13. 12" x 12" JOIST
 14. 12" x 12" JOIST
 15. 12" x 12" JOIST
 16. 12" x 12" JOIST
 17. 12" x 12" JOIST
 18. 12" x 12" JOIST
 19. 12" x 12" JOIST
 20. 12" x 12" JOIST
 21. 12" x 12" JOIST
 22. 12" x 12" JOIST
 23. 12" x 12" JOIST
 24. 12" x 12" JOIST
 25. 12" x 12" JOIST
 26. 12" x 12" JOIST
 27. 12" x 12" JOIST
 28. 12" x 12" JOIST
 29. 12" x 12" JOIST
 30. 12" x 12" JOIST
 31. 12" x 12" JOIST
 32. 12" x 12" JOIST
 33. 12" x 12" JOIST
 34. 12" x 12" JOIST
 35. 12" x 12" JOIST
 36. 12" x 12" JOIST
 37. 12" x 12" JOIST
 38. 12" x 12" JOIST
 39. 12" x 12" JOIST
 40. 12" x 12" JOIST
 41. 12" x 12" JOIST
 42. 12" x 12" JOIST
 43. 12" x 12" JOIST
 44. 12" x 12" JOIST
 45. 12" x 12" JOIST
 46. 12" x 12" JOIST
 47. 12" x 12" JOIST
 48. 12" x 12" JOIST
 49. 12" x 12" JOIST
 50. 12" x 12" JOIST
 51. 12" x 12" JOIST
 52. 12" x 12" JOIST
 53. 12" x 12" JOIST
 54. 12" x 12" JOIST
 55. 12" x 12" JOIST
 56. 12" x 12" JOIST
 57. 12" x 12" JOIST
 58. 12" x 12" JOIST
 59. 12" x 12" JOIST
 60. 12" x 12" JOIST
 61. 12" x 12" JOIST
 62. 12" x 12" JOIST
 63. 12" x 12" JOIST
 64. 12" x 12" JOIST
 65. 12" x 12" JOIST
 66. 12" x 12" JOIST
 67. 12" x 12" JOIST
 68. 12" x 12" JOIST
 69. 12" x 12" JOIST
 70. 12" x 12" JOIST
 71. 12" x 12" JOIST
 72. 12" x 12" JOIST
 73. 12" x 12" JOIST
 74. 12" x 12" JOIST
 75. 12" x 12" JOIST
 76. 12" x 12" JOIST
 77. 12" x 12" JOIST
 78. 12" x 12" JOIST
 79. 12" x 12" JOIST
 80. 12" x 12" JOIST
 81. 12" x 12" JOIST
 82. 12" x 12" JOIST
 83. 12" x 12" JOIST
 84. 12" x 12" JOIST
 85. 12" x 12" JOIST
 86. 12" x 12" JOIST
 87. 12" x 12" JOIST
 88. 12" x 12" JOIST
 89. 12" x 12" JOIST
 90. 12" x 12" JOIST
 91. 12" x 12" JOIST
 92. 12" x 12" JOIST
 93. 12" x 12" JOIST
 94. 12" x 12" JOIST
 95. 12" x 12" JOIST
 96. 12" x 12" JOIST
 97. 12" x 12" JOIST
 98. 12" x 12" JOIST
 99. 12" x 12" JOIST
 100. 12" x 12" JOIST