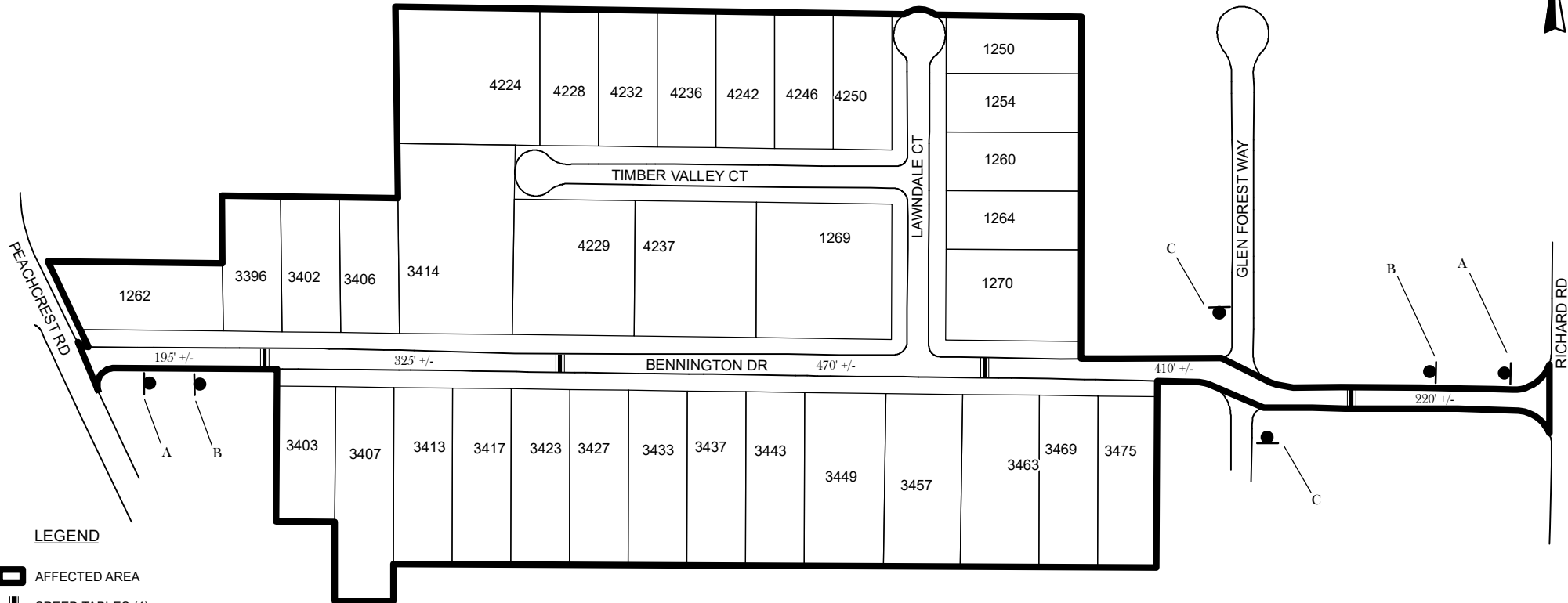


# TRAFFIC CALMING DISTRICT 19-15-00



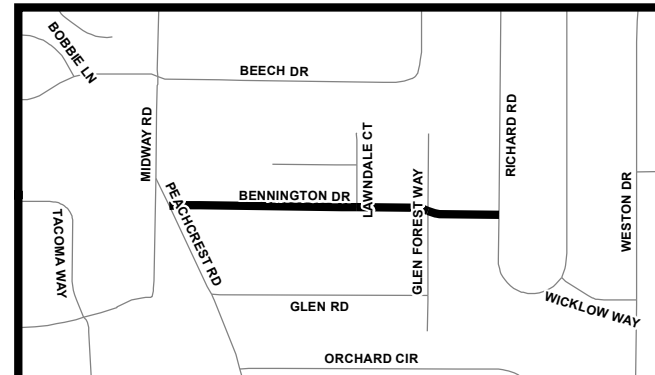
### LEGEND

- AFFECTED AREA
- SPEED TABLES (4)
- PARCEL BOUNDARY AND ADDRESS NUMBER
- TRAFFIC CALMING DISTRICT SIGNS
- SPEED HUMPS AHEAD SIGN AND ADVISORY 15 MPH SPEED PLAQUE
- SPEED HUMP AHEAD SIGN, CROSS STREET, AND ADVISORY 15 MPH SPEED PLAQUE

123 +/- DISTANCE BETWEEN TRAFFIC CALMING MEASURES (CENTER TO CENTER) & DISTANCE BETWEEN TRAFFIC CALMING MEASURES AND END OF STREET

### NOTES:

- 1) NUMBER OF PARCELS IN AFFECTED AREA: 34
- 2) STREET(S) IN AFFECTED AREA: BENNINGTON DR, LAWDALE CT, PEACHCREST RD, TIMBER VALLEY CT
- 3) EDGE OF TRAFFIC CALMING MEASURE NOT TO ENCROACH WITHIN 5' OF DRIVEWAY RETURNS



<b>DEKALB COUNTY TRANSPORTATION DIVISION TRAFFIC CALMING SECTION</b>	DRAWN BY: CH	SCALE: N.T.S.  Date: 2/12/2019	BENNINGTON DR DIST: 15 TH LAND LOT: 219 COMMISSION DISTRICTS: 3 & 7
	REVIEWED BY: CH		
	REVIEWED BY:		
	REVIEWED BY:		