

TRAFFIC CALMING DISTRICT 20-18-00

DELCOURT DR

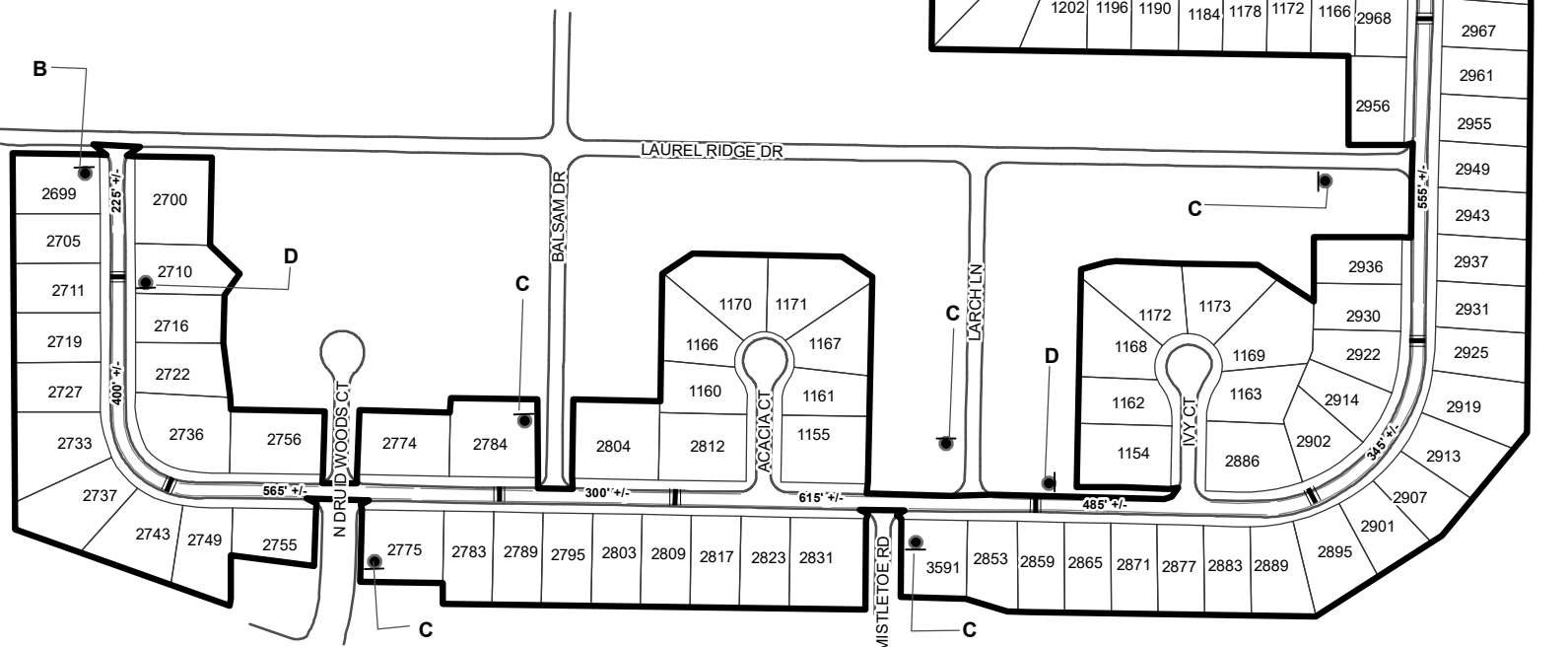
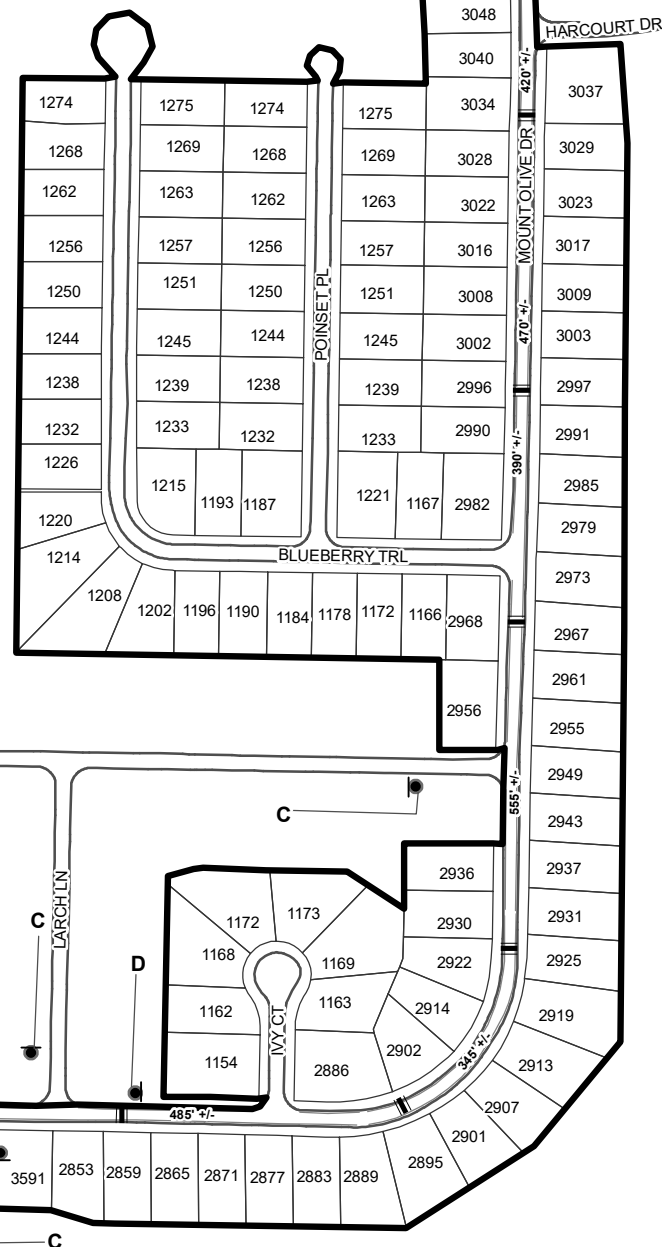


LEGEND

- AFFECTED AREA
- SPEED TABLES (11)
- STRIPING
- PARCEL BOUNDARY AND ADDRESS NUMBER
- TRAFFIC CALMING DISTRICT SIGNS
- SPEED HUMPS AHEAD SIGN AND ADVISORY 15 MPH SPEED PLAQUE
- SPEED HUMP AHEAD SIGN, CROSS STREET, AND ADVISORY 15 MPH SPEED PLAQUE
- SPEED HUMP SIGN AND DOWNWARD DIAGONAL LEFT ARROW PLAQUE
- 123 +/- DISTANCE BETWEEN TRAFFIC CALMING MEASURES (CENTER TO CENTER) & DISTANCE BETWEEN TRAFFIC CALMING MEASURES AND END OF STREET

NOTES:

- 1) NUMBER OF PARCELS IN AFFECTED AREA: 154
- 2) STREET(S) IN AFFECTED AREA: MT OLIVE DR, ACACIA CT, BLUEBERRY TRL, IVY CT, POINSET PL, & MISTLETOE RD
- 3) EDGE OF TRAFFIC CALMING MEASURE NOT TO ENCR OACH WITHIN 5' OF DRIVEWAY RETURNS



DEKALB COUNTY
TRANSPORTATION DIVISION
TRAFFIC CALMING SECTION

DRAWN BY: AE
REVIEWED BY: AE
REVIEWED BY:
REVIEWED BY:

SCALE: N.T.S.
Date: 1/28/2020

MOUNT OLIVE DRIVE
DIST: 18 TH LAND LOT: 115
COMMISSION DISTRICTS: 4 & 6