
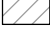

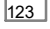

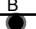
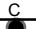
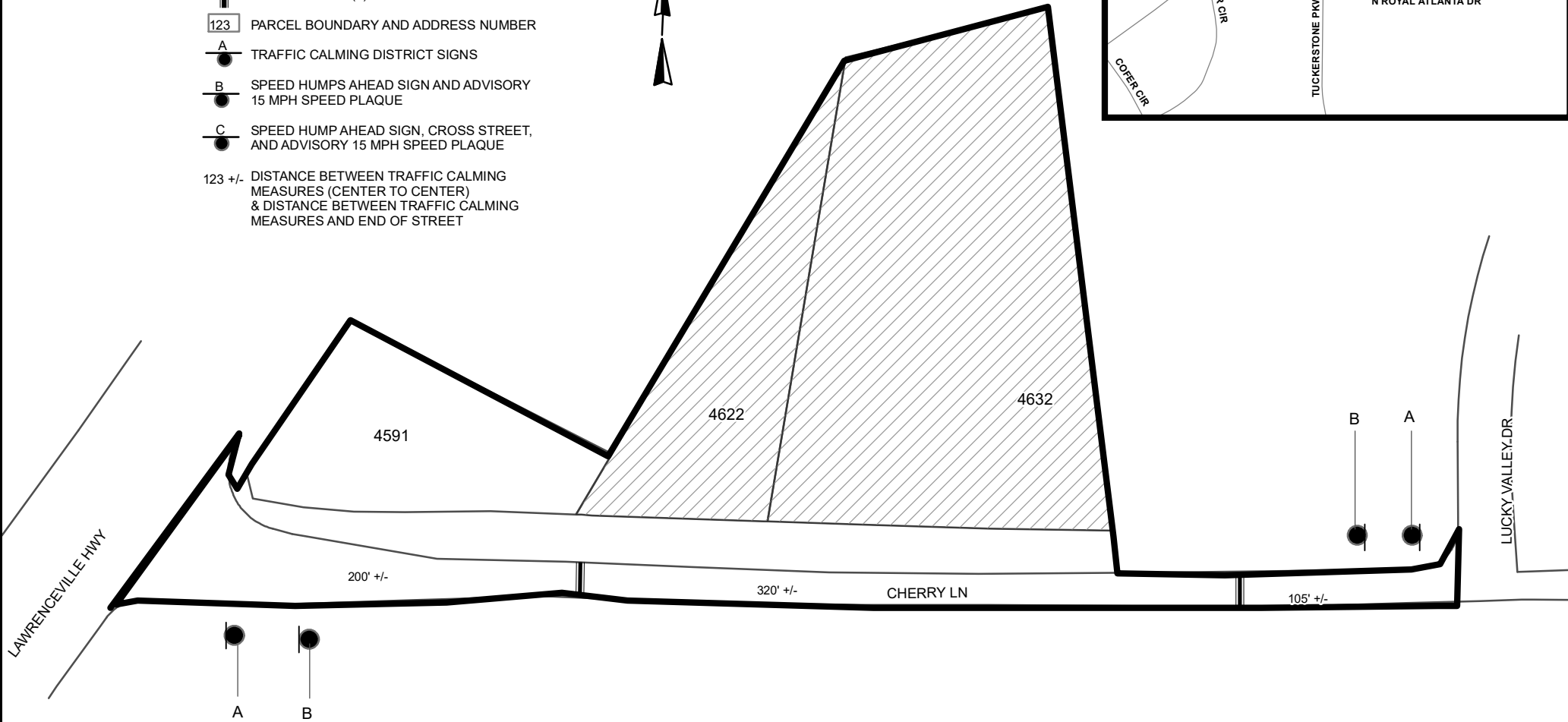
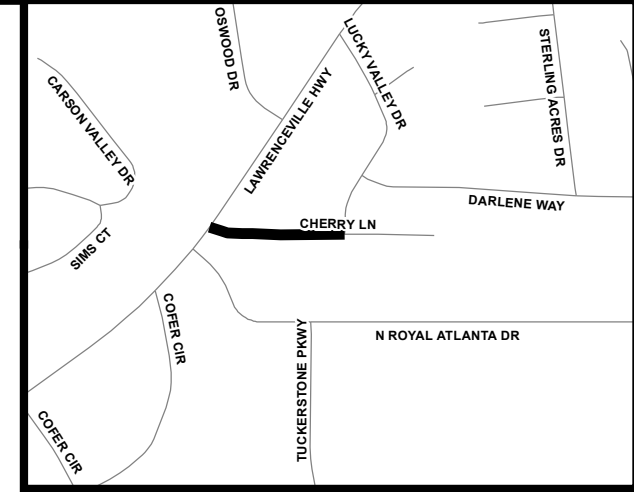


# TRAFFIC CALMING DISTRICT 21-18-01

## LEGEND

-  AFFECTED AREA
-  YES VOTES (2)
-  SPEED TABLES (2)
-  PARCEL BOUNDARY AND ADDRESS NUMBER
-  TRAFFIC CALMING DISTRICT SIGNS
-  SPEED HUMPS AHEAD SIGN AND ADVISORY 15 MPH SPEED PLAQUE
-  SPEED HUMP AHEAD SIGN, CROSS STREET, AND ADVISORY 15 MPH SPEED PLAQUE
- 123 +/- DISTANCE BETWEEN TRAFFIC CALMING MEASURES (CENTER TO CENTER) & DISTANCE BETWEEN TRAFFIC CALMING MEASURES AND END OF STREET



NOTES:

- 1) NUMBER OF PARCELS IN AFFECTED AREA: 3
- 2) STREET(S) IN AFFECTED AREA: CHERRY LN & LAWRENCEVILLE HWY
- 3) EDGE OF TRAFFIC CALMING MEASURE NOT TO ENCROACH WITHIN 5' OF DRIVEWAY RETURNS

DEKALB COUNTY  
TRANSPORTATION DIVISION  
TRAFFIC CALMING SECTION

DRAWN BY: AE

REVIEWED BY: AE

REVIEWED BY:

REVIEWED BY:

SCALE: N.T.S.

Date: 1/26/2021

Cherry Lane

DIST: 18 TH LAND LOT: 255

COMMISSION DISTRICTS: 1 & 7