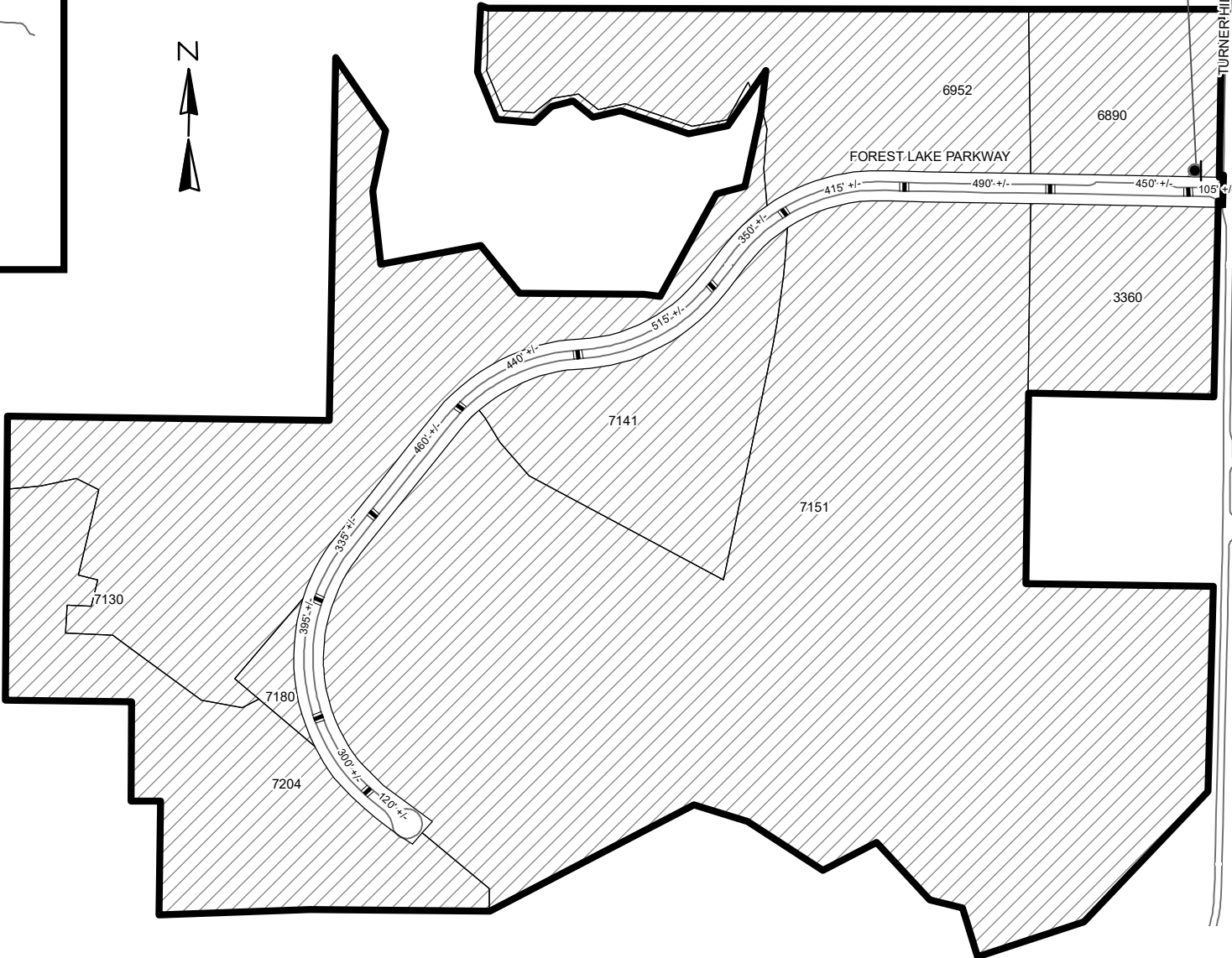
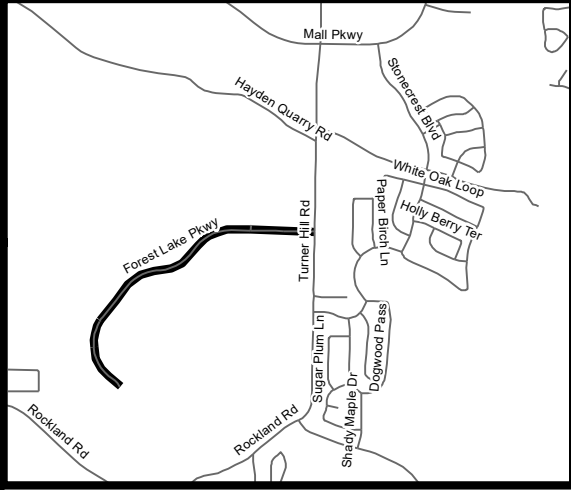


TRAFFIC CALMING DISTRICT 24-16-04



- LEGEND**
- AFFECTED AREA
 - YES VOTES (8)
 - SPEED TABLES (11)
 - PARCEL BOUNDARY AND ADDRESS NUMBER
 - TRAFFIC CALMING DISTRICT SIGNS
 - SPEED HUMPS AHEAD SIGN AND ADVISORY 15 MPH SPEED PLAQUE
 - SPEED HUMP AHEAD SIGN, CROSS STREET, AND ADVISORY 15 MPH SPEED PLAQUE
 - SPEED HUMP SIGN AND DOWNWARD DIAGONAL LEFT ARROW PLAQUE
- 123 +/- DISTANCE BETWEEN TRAFFIC CALMING MEASURES (CENTER TO CENTER) & DISTANCE BETWEEN TRAFFIC CALMING MEASURES AND END OF STREET

- NOTES:**
- 1] NUMBER OF PARCELS IN AFFECTED AREA: 8
 - 2] STREET(S) IN AFFECTED AREA: FOREST LAKE PARKWAY & TURNER HILL RD
 - 3] EDGE OF TRAFFIC CALMING MEASURE NOT TO ENCROACH WITHIN 5' OF DRIVEWAY RETURNS

DEKALB COUNTY TRANSPORTATION DIVISION TRAFFIC CALMING SECTION	DRAWN BY: AE	SCALE: N.T.S.	FOREST LAKE PARKWAY DIST: 16 TH LAND LOTS: 149 & 172 COMMISSION DISTRICTS: 5 & 7
	REVIEWED BY: AE		
	REVIEWED BY:	Date: 9/24/2024	
	REVIEWED BY:		