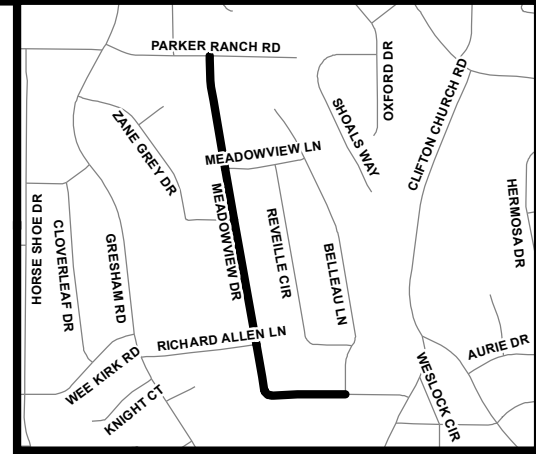
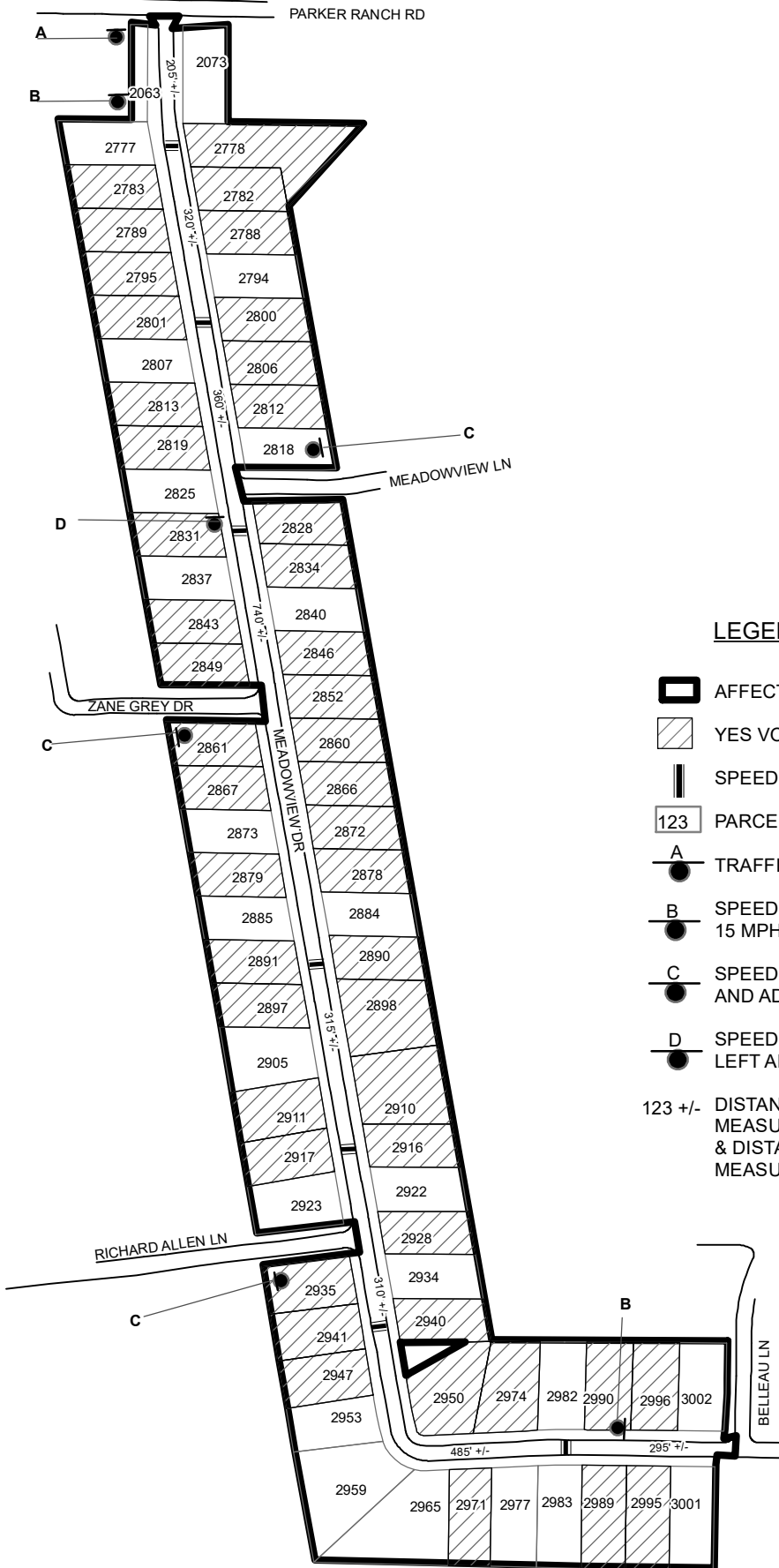


TRAFFIC CALMING DISTRICT 24-15-01



LEGEND

- AFFECTED AREA
 - YES VOTES (46)
 - SPEED TABLES (7)
 - 123 +/- PARCEL BOUNDARY AND ADDRESS NUMBER
 - A TRAFFIC CALMING DISTRICT SIGNS
 - B SPEED HUMPS AHEAD SIGN AND ADVISORY 15 MPH SPEED PLAQUE
 - C SPEED HUMP AHEAD SIGN, CROSS STREET, AND ADVISORY 15 MPH SPEED PLAQUE
 - D SPEED HUMP SIGN AND DOWNWARD DIAGONAL LEFT ARROW PLAQUE
- 123 +/- DISTANCE BETWEEN TRAFFIC CALMING MEASURES (CENTER TO CENTER) & DISTANCE BETWEEN TRAFFIC CALMING MEASURES AND END OF STREET

NOTES:

- 1) NUMBER OF PARCELS IN AFFECTED AREA: 70
- 2) STREET(S) IN AFFECTED AREA: MEADOWVIEW DR & PARKER RANCH RD
- 3) EDGE OF TRAFFIC CALMING MEASURE NOT TO ENCROACH WITHIN 5' OF DRIVEWAY RETURNS

DEKALB COUNTY
TRANSPORTATION DIVISION
TRAFFIC CALMING SECTION

DRAWN BY: AE
REVIEWED BY: AE
REVIEWED BY:
REVIEWED BY:

SCALE: N.T.S.
Date: 2/27/2024

MEADOWVIEW DR
DIST: 15 TH LAND LOT: 108 & 117
COMMISSION DISTRICTS: 3 & 6