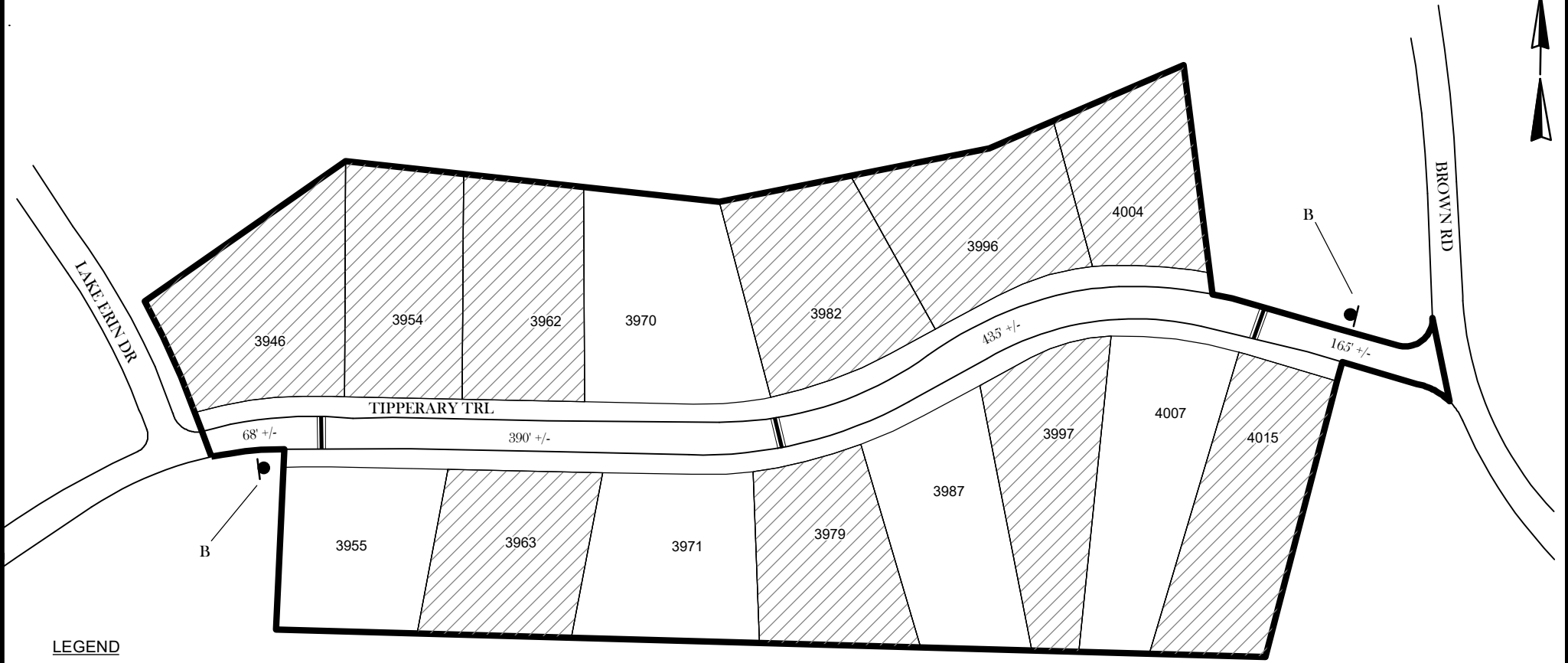

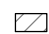

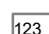



TRAFFIC CALMING DISTRICT 19-18-05

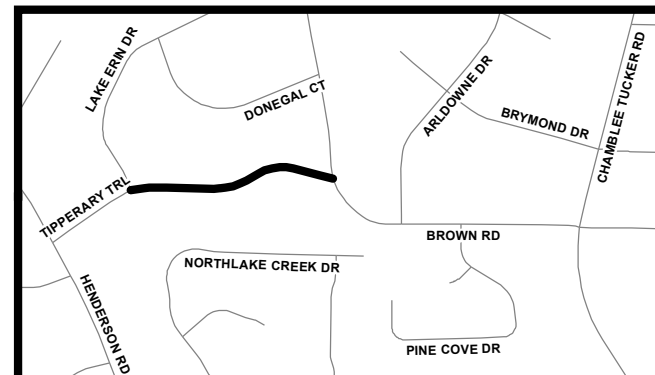


LEGEND

-  AFFECTED AREA
-  YES VOTES (10)
-  SPEED TABLES (3)
-  PARCEL BOUNDARY AND ADDRESS NUMBER
-  SPEED HUMPS AHEAD SIGN AND ADVISORY
15 MPH SPEED PLAQUE
- 123 +/- DISTANCE BETWEEN TRAFFIC CALMING
MEASURES (CENTER TO CENTER)
& DISTANCE BETWEEN TRAFFIC CALMING
MEASURES AND END OF STREET

NOTES:

- 1] NUMBER OF PARCELS IN AFFECTED AREA: 15
- 2] STREET(S) IN AFFECTED AREA: TIPPERARY TRL
- 3] EDGE OF TRAFFIC CALMING MEASURE NOT TO ENCROACH WITHIN 5' OF DRIVEWAY RETURNS



DEKALB COUNTY
TRANSPORTATION DIVISION
TRAFFIC CALMING SECTION

DRAWN BY: CH
REVIEWED BY: CH
REVIEWED BY: AE
REVIEWED BY: PGK

SCALE: N.T.S.

Date: 8/27/2019

TIPPERARY TRL

DIST: 18 TH LAND LOT: 252

COMMISSION DISTRICTS: 1 & 7