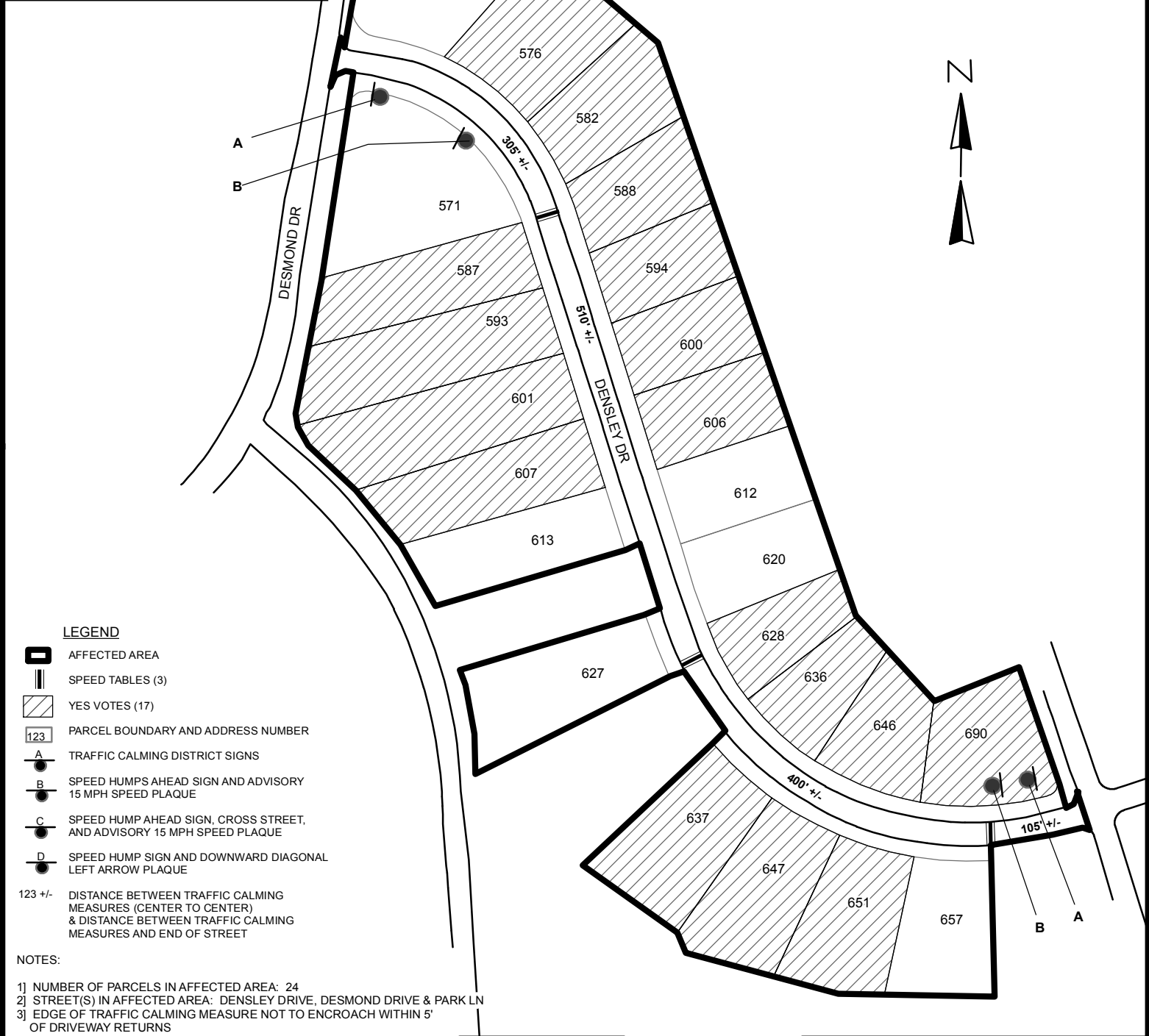
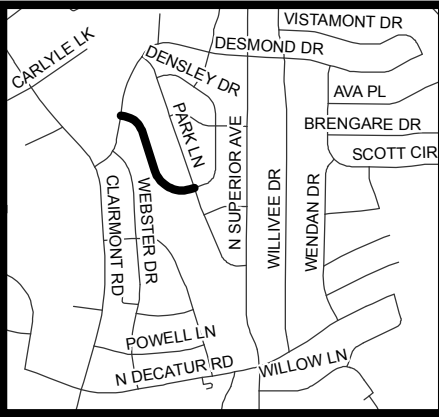


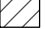
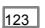

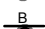




TRAFFIC CALMING DISTRICT 18-18-03



LEGEND

-  AFFECTED AREA
-  SPEED TABLES (3)
-  YES VOTES (17)
-  PARCEL BOUNDARY AND ADDRESS NUMBER
-  TRAFFIC CALMING DISTRICT SIGNS
-  SPEED HUMPS AHEAD SIGN AND ADVISORY 15 MPH SPEED PLAQUE
-  SPEED HUMP AHEAD SIGN, CROSS STREET, AND ADVISORY 15 MPH SPEED PLAQUE
-  SPEED HUMP SIGN AND DOWNWARD DIAGONAL LEFT ARROW PLAQUE
- 123 +/- DISTANCE BETWEEN TRAFFIC CALMING MEASURES (CENTER TO CENTER) & DISTANCE BETWEEN TRAFFIC CALMING MEASURES AND END OF STREET

NOTES:

- 1) NUMBER OF PARCELS IN AFFECTED AREA: 24
- 2) STREET(S) IN AFFECTED AREA: DENSDLEY DRIVE, DESMOND DRIVE & PARK LN
- 3) EDGE OF TRAFFIC CALMING MEASURE NOT TO ENCROACH WITHIN 5' OF DRIVEWAY RETURNS

DEKALB COUNTY
TRANSPORTATION DIVISION
TRAFFIC CALMING SECTION

DRAWN BY: AE
REVIEWED BY: PGK
REVIEWED BY:
REVIEWED BY:

SCALE: NTS

Date: 4/10/2018

DENSDLEY DRIVE
DIST: 18TH LAND LOT: 60
COMMISSION DISTRICTS: 2 & 6