

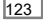

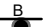


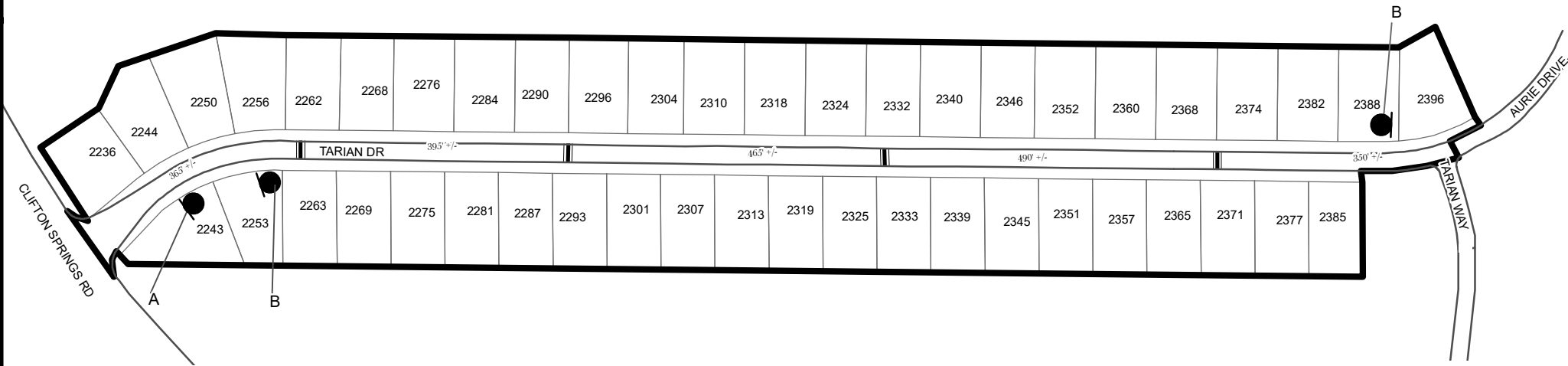
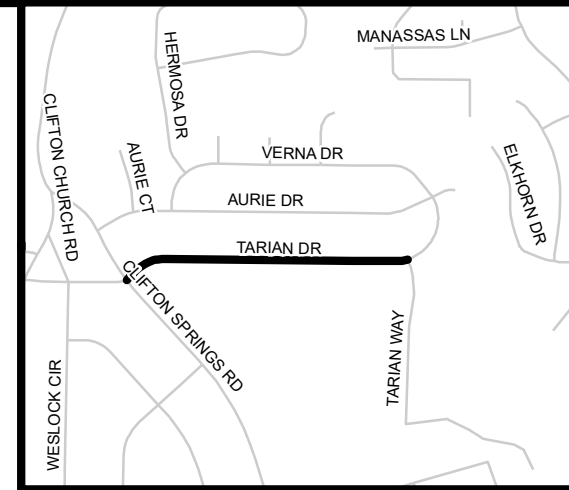


# TRAFFIC CALMING DISTRICT 26-15-00

## LEGEND

-  AFFECTED AREA
  -  SPEED TABLES (4)
  -  PARCEL BOUNDARY AND ADDRESS NUMBER
  -  A TRAFFIC CALMING DISTRICT SIGNS
  -  B SPEED HUMPS AHEAD SIGN AND ADVISORY 15 MPH SPEED PLAQUE
  -  C SPEED HUMP AHEAD SIGN, CROSS STREET, AND ADVISORY 15 MPH SPEED PLAQUE
  -  D SPEED HUMP SIGN AND DOWNWARD DIAGONAL LEFT ARROW PLAQUE
- 123 +/- DISTANCE BETWEEN TRAFFIC CALMING MEASURES (CENTER TO CENTER) & DISTANCE BETWEEN TRAFFIC CALMING MEASURES AND END OF STREET



**NOTES:**

- 1] NUMBER OF PARCELS IN AFFECTED AREA: 46
- 2] STREET(S) IN AFFECTED AREA: TARIAN DR
- 3] EDGE OF TRAFFIC CALMING MEASURE NOT TO ENCROACH WITHIN 5' OF DRIVEWAY RETURNS

DEKALB COUNTY  
TRANSPORTATION DIVISION  
TRAFFIC CALMING SECTION

DRAWN BY: AE  
REVIEWED BY: AE  
REVIEWED BY:  
REVIEWED BY:

SCALE: N.T.S.

Date: 6/9/2026

TARIAN DRIVE

DIST: 15 TH LAND LOT: 107

COMMISSION DISTRICTS: 3 & 6