

NOTES

1. THE UNDERGROUND UTILITIES SHOWN HAVE BEEN LOCATED FROM FIELD SURVEY INFORMATION AND EXISTING DRAWINGS. THIS SURVEYOR MAKES NO GUARANTEE THAT THE UNDERGROUND UTILITIES SHOWN COMPRISE ALL SUCH UTILITIES IN THE AREA, EITHER IN SERVICE OR ABANDONED. THE SURVEYOR FURTHER DOES NOT WARRANT THAT THE UNDERGROUND UTILITIES SHOWN ARE IN THE EXACT LOCATION INDICATED ALTHOUGH HE DOES CERTIFY THAT THEY ARE LOCATED AS ACCURATELY AS POSSIBLE FROM INFORMATION SUPPLIED AND TO THE SURVEYOR'S BEST KNOWLEDGE ARE APPROXIMATELY AS SHOWN. THE SURVEYOR HAS NOT PHYSICALLY LOCATED THE UNDERGROUND UTILITIES.
2. I HAVE EXAMINED THE FEDERAL EMERGENCY MANAGEMENT AGENCY FLOOD INSURANCE RATE MAP FOR DEKALB COUNTY, GEORGIA AND INCORPORATED AREAS, COMMUNITY PANEL NUMBER 13089C0067J, PANEL 67 OF 201, EFFECTIVE DATE MAY 16, 2013 AND FOUND NO PORTION OF THE PROPERTY SHOWN HEREON TO FALL WITHIN A DESIGNATED FLOOD ZONE "A" (AREAS OF 100 YEAR FLOOD), THE PROPERTY FALLS WITHIN FLOOD ZONE "X".
3. THE ORTHOMETRIC HEIGHTS (ELEVATIONS AND CONTOURS) SHOWN HEREON WERE DETERMINED BY GPS OBSERVATIONS AND WERE ADJUSTED BY PLANNERS AND ENGINEERS COLLABORATIVE IN MARCH 2013. NORTH AMERICAN DATUM OF 1983 (NAD83), NORTH AMERICAN VERTICAL DATUM OF 1988 (NAV88), GEORGIA WEST ZONE STATE PLANE COORDINATES.
4. THE TERM "CERTIFICATION" RELATING TO PROFESSIONAL ENGINEERING AND LAND SURVEYING SERVICES SHALL MEAN A SIGNED STATEMENT BASED UPON FACTS AND KNOWLEDGE KNOWN TO THE REGISTRANT AND IS NOT A GUARANTEE OR WARRANTY, EITHER EXPRESSED OR IMPLIED.
5. THIS SURVEY HAS BEEN PREPARED WITHOUT THE BENEFIT OF A CURRENT TITLE INSPECTION REPORT. EASEMENTS OR OTHER ENCUMBRANCES MAY EXIST ON PUBLIC RECORD BUT NOT BE SHOWN HEREON.

LEGAL DESCRIPTION – DEDICATION TRACT ONE

ALL THAT TRACT OR PARCEL OF LAND lying and being in Land Lot 46 of the 18th District, City of Scottsdale, DeKalb County, Georgia and being more particularly described as follows:

Beginning at a point at the intersection of the Northeastern Right-of-Way of North Decatur Rd (70' Right-of-Way) and the Southeastern Right-of-Way of Parkdale Dr (60' Right-of-Way), said point being the TRUE POINT OF BEGINNING;

Thence along said right-of-way line of Parkdale Drive 39.05 feet along an arc of a curve to the right, said curve having a radius of 25.00 feet and a chord bearing and distance of North 19 degrees 06 minutes 37 seconds West 35.20 feet; thence North 25 degrees 38 minutes 31 seconds East a distance of 11.52 feet to a point; thence leaving said right-of-way line South 71 degrees 24 minutes 37 seconds East a distance of 172.12 feet to a point; thence South 61 degrees 39 minutes 26 seconds East a distance of 220.40 feet to a point; thence South 62 degrees 50 minutes 10 seconds East a distance of 164.29 feet to a point; thence South 62 degrees 50 minutes 59 seconds East a distance of 115.92 feet to a point; thence South 67 degrees 57 minutes 21 seconds East a distance of 54.44 feet to a point; thence South 17 degrees 27 minutes 21 seconds West a distance of 48.86 feet to a point on said right-of-way line of North Decatur Road; thence along said right-of-way line the following courses and distances: North 63 degrees 42 minutes 32 seconds West a distance of 4.97 feet to a point; thence North 64 degrees 01 minutes 01 seconds West a distance of 383.51 feet to a point; thence North 63 degrees 51 minutes 46 seconds West a distance of 319.14 feet to a point and the POINT OF BEGINNING.

Said tract containing 0.827 acres.

LEGAL DESCRIPTION – DEDICATION TRACT TWO

ALL THAT TRACT OR PARCEL OF LAND lying and being in Land Lot 46 of the 18th District, City of Scottsdale, DeKalb County, Georgia and being more particularly described as follows:

To find the TRUE POINT OF BEGINNING; commence from at a point at the intersection of the Northeastern Right-of-Way of North Decatur Rd (70' Right-of-Way) and the Southeastern Right-of-Way of Parkdale Dr (60' Right-of-Way);

Thence along said right-of-way line of Parkdale Drive 39.05 feet along an arc of a curve to the right, said curve having a radius of 25.00 feet and a chord bearing and distance of North 19 degrees 06 minutes 37 seconds West 35.20 feet; thence North 25 degrees 38 minutes 31 seconds East a distance of 11.52 feet to a point; thence North 25 degrees 38 minutes 31 seconds East a distance of 105.36 feet to a point and the TRUE POINT OF BEGINNING; thence continuing along said right-of-way line North 25 degrees 43 minutes 45 seconds East a distance of 84.03 feet to a point; thence leaving said right-of-way line of Parkdale Drive South 19 degrees 08 minutes 36 seconds East a distance of 16.95 feet to a point; thence South 64 degrees 35 minutes 49 seconds East a distance of 51.53 feet to a point; thence 114.35 feet along an arc of a curve to the left, said curve having a radius of 190.03 feet and a chord bearing and distance of South 81 degrees 44 minutes 50 seconds East 112.63 feet to a point; thence North 81 degrees 31 minutes 58 seconds East a distance of 41.31 feet to a point; thence 91.32 feet along an arc of a curve to the right, said curve having a radius of 180.00 feet and a chord bearing and distance of South 83 degrees 10 minutes 08 seconds East 90.35 feet to a point; thence South 67 degrees 49 minutes 44 seconds East a distance of 3.12 feet to a point; thence 11.61 feet along an arc of a curve to the left, said curve having a radius of 7.00 feet and a chord bearing and distance of North 64 degrees 39 minutes 42 seconds East 10.32 feet to a point; thence 27.36 feet along an arc of a curve to the left, said curve having a radius of 286.73 feet and a chord bearing and distance of North 14 degrees 28 minutes 38 seconds East 27.35 feet to a point; thence 56.88 feet along an arc of a curve to the left, said curve having a radius of 294.14 feet and a chord bearing and distance of North 06 degrees 19 minutes 25 seconds East 56.79 feet to a point; thence North 00 degrees 47 minutes 02 seconds East a distance of 288.58 feet to a point; thence 81.98 feet along an arc of a curve to the right, said curve having a radius of 180.00 feet and a chord bearing and distance of North 13 degrees 49 minutes 51 seconds East 81.27 feet to a point; thence 26.53 feet along an arc of a curve to the left, said curve having a radius of 20.00 feet and a chord bearing and distance of North 11 degrees 07 minutes 28 seconds West 24.63 feet to a point; thence 110.43 feet along an arc of a curve to the left, said curve having a radius of 120.00 feet and a chord bearing and distance of North 75 degrees 29 minutes 19 seconds West 106.57 feet to a point; thence South 78 degrees 08 minutes 57 seconds West a distance of 139.01 feet to a point; thence South 32 degrees 23 minutes 36 seconds West a distance of 17.54 feet to a point; thence 88.88 feet along an arc of a curve to the left, said curve having a radius of 455.13 feet and a chord bearing and distance of North 17 degrees 33 minutes 01 seconds West 88.74 feet to a point; thence South 56 degrees 05 minutes 41 seconds East a distance of 21.96 feet to a point; thence North 78 degrees 08 minutes 57 seconds East a distance of 144.74 feet to a point; thence 156.54 feet along an arc of a curve to the right, said curve having a radius of 180.00 feet and a chord bearing and distance of South 76 degrees 56 minutes 14 seconds East 151.65 feet to a point; thence South 52 degrees 01 minutes 25 seconds East a distance of 11.05 feet to a point; thence 25.15 feet along an arc of a curve to the left, said curve having a radius of 20.00 feet and a chord bearing and distance of South 88 degrees 03 minutes 00 seconds East 23.53 feet to a point; thence 110.35 feet along an arc of a curve to the right, said curve having a radius of 180.00 feet and a chord bearing and distance of North 73 degrees 29 minutes 12 seconds East 108.63 feet to a point; thence South 88 degrees 57 minutes 02 seconds East a distance of 173.10 feet to a point; thence continue Easterly along said line, a distance of 114.25 feet; thence South 00 degrees 54 minutes 34 seconds West a distance of 360.96 feet to a point; thence East a distance of 89.98 feet to a point; thence South a distance of 107.00 feet to a point; thence 53.97 feet along an arc of a curve to the right, said curve having a radius of 280.00 feet and a chord bearing and distance of South 05 degrees 31 minutes 17 seconds West 53.88 feet to a point; thence South 11 degrees 02 minutes 34 seconds West a distance of 406.34 feet to a point; thence North 78 degrees 57 minutes 26 seconds West a distance of 158.59 feet to a point; thence 50.97 feet along an arc of a curve to the right, said curve having a radius of 180.00 feet and a chord bearing and distance of North 70 degrees 50 minutes 44 seconds West 50.80 feet to a point; thence North 62 degrees 44 minutes 02 seconds West a distance of 120.30 feet to a point; thence continue Northwesterly along said line, a distance of 261.72 feet; thence 120.01 feet along an arc of a curve to the right, said curve having a radius of 179.99 feet and a chord bearing and distance of North 43 degrees 38 minutes 02 seconds West 117.80 feet to a point; thence 19.62 feet along an arc of a curve to the left, said curve having a radius of 16.00 feet and a chord bearing and distance of North 59 degrees 39 minutes 10 seconds West 18.41 feet to a point; thence 132.15 feet along an arc of a curve to the right, said curve having a radius of 250.60 feet and a chord bearing and distance of North 79 degrees 40 minutes 02 seconds West 130.62 feet to a point; thence North 64 degrees 35 minutes 50 seconds West a distance of 51.74 feet to a point; thence South 70 degrees 47 minutes 04 seconds West a distance of 17.01 feet to a point and the TRUE POINT OF BEGINNING.

Said tract containing 10.926 acres.

LESS AND EXCEPT THE FOLLOWING:

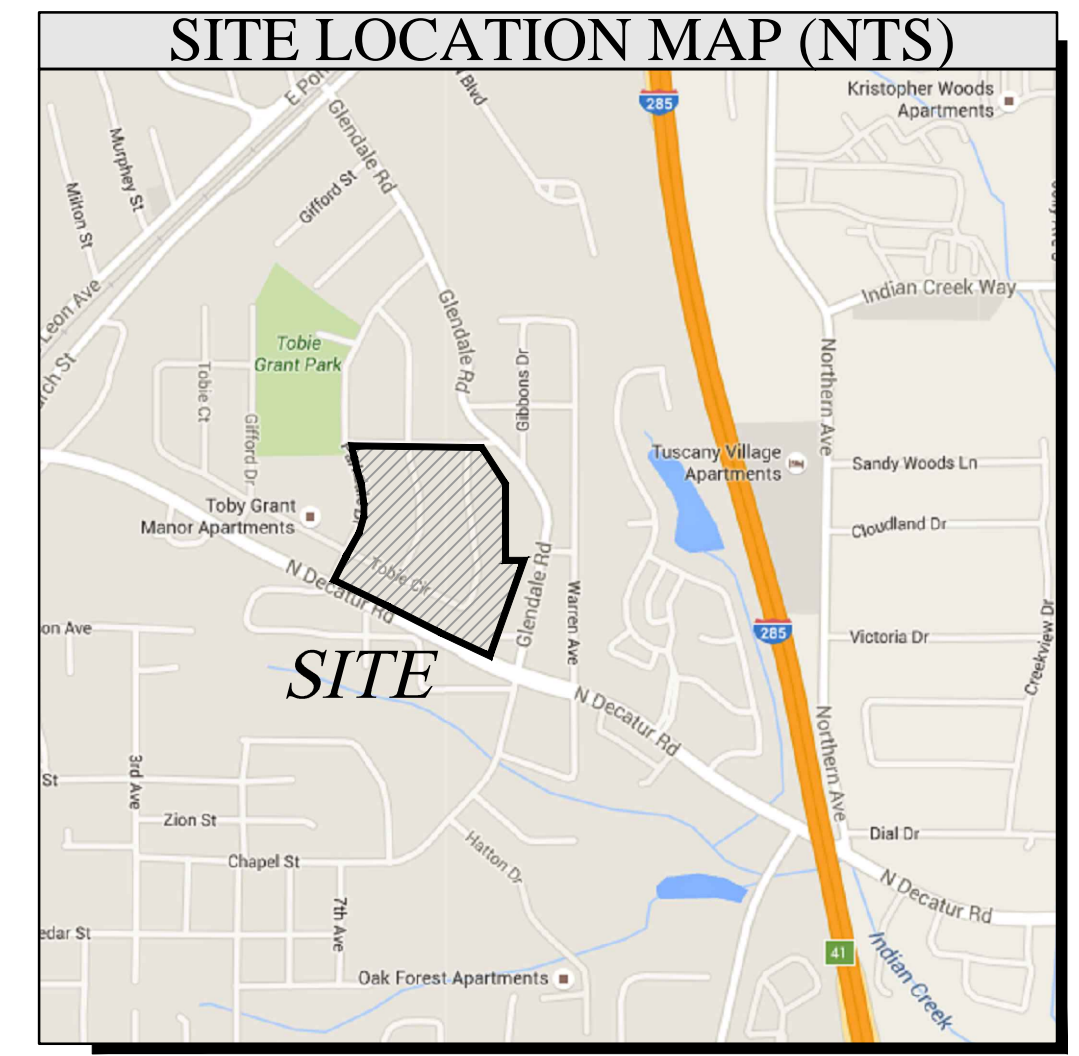
ALL THAT TRACT OR PARCEL OF LAND lying and being in Land Lot 46 of the 18th District, City of Scottsdale, DeKalb County, Georgia and being more particularly described as follows:

To find the TRUE POINT OF BEGINNING; commence from at a point at the intersection of the Northeastern Right-of-Way of North Decatur Rd (70' Right-of-Way) and the Southeastern Right-of-Way of Parkdale Dr (60' Right-of-Way);

Thence along said right-of-way line of Parkdale Drive 39.05 feet along an arc of a curve to the right, said curve having a radius of 25.00 feet and a chord bearing and distance of North 19 degrees 06 minutes 37 seconds West 35.20 feet; thence North 25 degrees 38 minutes 31 seconds East a distance of 11.52 feet to a point; thence North 25 degrees 38 minutes 31 seconds East a distance of 105.36 feet to a point; thence continuing along said right-of-way line North 25 degrees 43 minutes 45 seconds East a distance of 84.03 feet to a point; thence leaving said right-of-way line of Parkdale Drive South 19 degrees 08 minutes 36 seconds East a distance of 16.95 feet to a point; thence South 64 degrees 35 minutes 49 seconds East a distance of 51.53 feet to a point; thence 114.35 feet along an arc of a curve to the left, said curve having a radius of 190.03 feet and a chord bearing and distance of South 81 degrees 44 minutes 50 seconds East 112.63 feet to a point; thence North 81 degrees 31 minutes 58 seconds East a distance of 41.31 feet to a point; thence 91.32 feet along an arc of a curve to the right, said curve having a radius of 180.00 feet and a chord bearing and distance of South 83 degrees 10 minutes 08 seconds East 90.35 feet to a point; thence South 67 degrees 49 minutes 44 seconds East a distance of 3.12 feet to a point; thence 11.61 feet along an arc of a curve to the left, said curve having a radius of 7.00 feet and a chord bearing and distance of North 64 degrees 39 minutes 42 seconds East 10.32 feet to a point; thence South 33 degrees 26 minutes 14 seconds East a distance of 72.91 feet to a point and the TRUE POINT OF BEGINNING; thence North 24 degrees 37 minutes 18 seconds East a distance of 1.83 feet to a point; thence 147.34 feet along an arc of a curve to the left, said curve having a radius of 354.14 feet and a chord bearing and distance of North 12 degrees 42 minutes 10 seconds East 146.28 feet to a point; thence North 00 degrees 47 minutes 02 seconds East a distance of 256.11 feet to a point; thence North 00 degrees 47 minutes 02 seconds East a distance of 31.06 feet; thence 62.48 feet along an arc of a curve to the right, said curve having a radius of 120.00 feet and a chord bearing and distance of North 15 degrees 41 minutes 59 seconds East 61.78 feet to a point; thence 126.57 feet along an arc of a curve to the right, said curve having a radius of 120.00 feet and a chord bearing and distance of North 60 degrees 49 minutes 57 seconds East 120.79 feet to a point; thence South 88 degrees 57 minutes 02 seconds East a distance of 173.10 feet to a point; thence continue Easterly along said line, a distance of 44.42 feet; thence 15.68 feet along an arc of a curve to the right, said curve having a radius of 10.00 feet and a chord bearing and distance of South 44 degrees 01 minutes 14 seconds East 14.12 feet to a point; thence South 00 degrees 54 minutes 34 seconds West a distance of 48.39 feet to a point; thence continue Southerly along said line, a distance of 303.70 feet; thence East a distance of 90.94 feet to a point; thence South a distance of 47.00 feet to a point; thence 42.40 feet along an arc of a curve to the right, said curve having a radius of 220.00 feet and a chord bearing and distance of South 05 degrees 31 minutes 17 seconds West 42.34 feet to a point; thence South 11 degrees 02 minutes 34 seconds West a distance of 266.04 feet to a point; thence South 11 degrees 02 minutes 34 seconds West a distance of 70.30 feet; thence 15.71 feet along an arc of a curve to the right, said curve having a radius of 10.00 feet and a chord bearing and distance of South 56 degrees 02 minutes 34 seconds West 14.14 feet to a point; thence North 78 degrees 57 minutes 26 seconds West a distance of 88.59 feet to a point; thence 33.98 feet along an arc of a curve to the right, said curve having a radius of 120.00 feet and a chord bearing and distance of North 70 degrees 50 minutes 44 seconds West 33.86 feet to a point; thence North 62 degrees 44 minutes 02 seconds West a distance of 120.30 feet to a point; thence North 62 degrees 44 minutes 02 seconds West a distance of 208.01 feet; thence 15.25 feet along an arc of a curve to the right, said curve having a radius of 10.00 feet and a chord bearing and distance of North 19 degrees 03 minutes 22 seconds West 13.81 feet to a point; thence North 24 degrees 37 minutes 18 seconds East a distance of 57.15 feet to a point and the TRUE POINT OF BEGINNING.

Said tract containing 6.452 acres.

THE RESULTING ACREAGE OF TRACT 2 = 4.474 ACRES.



LEGAL DESCRIPTION – DEDICATION TRACT THREE

ALL THAT TRACT OR PARCEL OF LAND lying and being in Land Lot 46 of the 18th District, City of Scottsdale, DeKalb County, Georgia and being more particularly described as follows:

To find the TRUE POINT OF BEGINNING; commence from at a point at the intersection of the Northeastern Right-of-Way of North Decatur Rd (70' Right-of-Way) and the Southeastern Right-of-Way of Parkdale Dr (60' Right-of-Way);

Thence along said right-of-way line of Parkdale Drive 39.05 feet along an arc of a curve to the right, said curve having a radius of 25.00 feet and a chord bearing and distance of North 19 degrees 06 minutes 37 seconds West 35.20 feet; thence North 25 degrees 38 minutes 31 seconds East a distance of 11.52 feet to a point; thence North 25 degrees 38 minutes 31 seconds East a distance of 105.36 feet to a point; thence continuing along said right-of-way line North 25 degrees 43 minutes 45 seconds East a distance of 84.03 feet to a point; thence leaving said right-of-way line of Parkdale Drive South 19 degrees 08 minutes 36 seconds East a distance of 16.95 feet to a point; thence South 64 degrees 35 minutes 49 seconds East a distance of 51.53 feet to a point; thence 114.35 feet along an arc of a curve to the left, said curve having a radius of 190.03 feet and a chord bearing and distance of South 81 degrees 44 minutes 50 seconds East 112.63 feet to a point; thence North 81 degrees 31 minutes 58 seconds East a distance of 41.31 feet to a point; thence 91.32 feet along an arc of a curve to the right, said curve having a radius of 180.00 feet and a chord bearing and distance of South 83 degrees 10 minutes 08 seconds East 90.35 feet to a point; thence South 67 degrees 49 minutes 44 seconds East a distance of 3.12 feet to a point; thence 11.61 feet along an arc of a curve to the left, said curve having a radius of 7.00 feet and a chord bearing and distance of North 64 degrees 39 minutes 42 seconds East 10.32 feet to a point; thence South 33 degrees 26 minutes 14 seconds East a distance of 72.91 feet to a point and the TRUE POINT OF BEGINNING; thence South 63 degrees 12 minutes 24 seconds East a distance of 261.80 feet to a point; thence 92.30 feet along an arc of a curve to the left, said curve having a radius of 335.01 feet and a chord bearing and distance of South 71 degrees 03 minutes 51 seconds East 92.01 feet to a point; thence South 78 degrees 57 minutes 26 seconds East a distance of 97.76 feet to a point; thence South 11 degrees 02 minutes 34 seconds West a distance of 70.30 feet to a point; thence 15.71 feet along an arc of a curve to the right, said curve having a radius of 10.00 feet and a chord bearing and distance of South 56 degrees 02 minutes 34 seconds West 14.14 feet to a point; thence North 78 degrees 57 minutes 26 seconds West a distance of 88.59 feet to a point; thence 33.98 feet along an arc of a curve to the right, said curve having a radius of 120.00 feet and a chord bearing and distance of North 70 degrees 50 minutes 44 seconds West 33.86 feet to a point; thence North 62 degrees 44 minutes 02 seconds West a distance of 328.31 feet to a point; thence 15.25 feet along an arc of a curve to the right, said curve having a radius of 10.00 feet and a chord bearing and distance of North 19 degrees 03 minutes 22 seconds West 13.81 feet to a point; thence North 24 degrees 37 minutes 18 seconds East a distance of 57.15 feet to a point and the TRUE POINT OF BEGINNING.

Said tract containing 0.758 acres.

LEGAL DESCRIPTION – DEDICATION TRACT FOUR

ALL THAT TRACT OR PARCEL OF LAND lying and being in Land Lot 46 of the 18th District, City of Scottsdale, DeKalb County, Georgia and being more particularly described as follows:

To find the TRUE POINT OF BEGINNING; commence from at a point at the intersection of the Northeastern Right-of-Way of North Decatur Rd (70' Right-of-Way) and the Southeastern Right-of-Way of Parkdale Dr (60' Right-of-Way);

thence North 38 degrees 55 minutes 29 seconds East a distance of 756.85 feet to the POINT OF BEGINNING; Thence 126.57 along the arc of a curve to the right, said curve having a radius of 120.00' and a chord bearing and distance of North 60 degrees 49 minutes 57 seconds East 120.79 feet to a point; thence South 88 degrees 57 minutes 02 seconds East a distance of 173.10 feet to a point; thence South 88 degrees 57 minutes 02 seconds East a distance of 44.42 feet; thence 15.68 feet along an arc of a curve to the right, said curve having a radius of 10.00 feet and a chord bearing and distance of South 44 degrees 01 minutes 14 seconds East 14.12 feet to a point; thence South 00 degrees 54 minutes 34 seconds West a distance of 48.39 feet to a point; thence North 89 degrees 22 minutes 09 seconds West a distance of 332.03 feet to a point and the TRUE POINT OF BEGINNING.

Said tract containing 0.411 acres.

LEGAL DESCRIPTION – OVERALL

ALL THAT TRACT OR PARCEL OF LAND lying and being in Land Lot 46 of the 18th District, City of Scottsdale, DeKalb County, Georgia and being more particularly described as follows:

Beginning at a point at the intersection of the Northeastern Right-of-Way of North Decatur Rd (70' Right-of-Way) and the Southeastern Right-of-Way of Parkdale Dr (60' Right-of-Way), said point being the TRUE POINT OF BEGINNING; Thence leaving said intersection and traveling along said Right-of-Way of Parkdale Dr, 39.18 feet along an arc of a curve to the right, said curve having a radius of 25.00 feet and a chord bearing and distance of North 19 degrees 06 minutes 37 seconds West 35.30 feet; Thence continuing along said Right-of-Way the following courses and distances: North 25 degrees 38 minutes 31 seconds East, a distance of 116.88 feet to a point; thence North 25 degrees 43 minutes 45 seconds East a distance of 84.03 feet to a point; thence North 25 degrees 47 minutes 11 seconds East a distance of 149.77 feet to a point; thence 223.10 feet along an arc of a curve to the left, said curve having a radius of 455.13 feet and a chord bearing and distance of North 8 degrees 18 minutes 15 seconds East 220.88 feet to a point; thence 253.18 feet along an arc of a curve to the left, said curve having a radius of 455.13 feet and a chord bearing and distance of North 21 degrees 40 minutes 31 seconds West 249.93 feet to a point; thence 15.56 feet along an arc of a curve to the right, said curve having a radius of 170.43 feet and a chord bearing and distance of North 30 degrees 8 minutes 54 seconds West 15.55 feet to a point; thence North 24 degrees 16 minutes 28 seconds West a distance of 20.29 feet to a point at the intersection with the southerly right-of-way line of Tobie Grant Lane (60' R/W); thence along said right-of-way of Tobie Grant Lane South 89 degrees 30 minutes 17 seconds East a distance of 332.83 feet to a point; thence South 89 degrees 30 minutes 17 seconds East, a distance of 487.36 feet; thence leaving said right-of-way line South 37 degrees 45 minutes 23 seconds East a distance of 171.89 feet to a point; thence South 0 degrees 37 minutes 57 seconds West a distance of 377.55 feet to a point; thence South 88 degrees 54 minutes 3 seconds East a distance of 109.60 feet to a point; thence South 10 degrees 31 minutes 57 seconds West a distance of 591.27 feet to a point; thence South 14 degrees 12 minutes 47 seconds West a distance of 193.29 feet to a point on Northeastern Right-of-Way of North Decatur Rd (70' Right-of-Way); thence along said right-of-way line the following courses and distances: North 65 degrees 21 minutes 11 seconds West a distance of 48.85 feet to a point; thence North 63 degrees 22 minutes 23 seconds West a distance of 50.05 feet to a point; thence North 65 degrees 34 minutes 19 seconds West a distance of 51.12 feet to a point; thence North 62 degrees 6 minutes 30 seconds West a distance of 51.14 feet to a point; thence North 63 degrees 42 minutes 32 seconds West a distance of 141.95 feet to a point; thence North 64 degrees 01 minute 1 second West a distance of 383.51 feet to a point; thence North 63 degrees 51 minutes 46 seconds West a distance of 319.01 feet to a point and the TRUE POINT OF BEGINNING.

Said tract containing 22.613 acres.

REV	DATE	DESCRIPTION	JNH	BY
1	06/14/19	ADD OVERALL LEGAL DESCRIPTION	JNH	BY

LAND SWAP EXHIBIT – PROPOSED

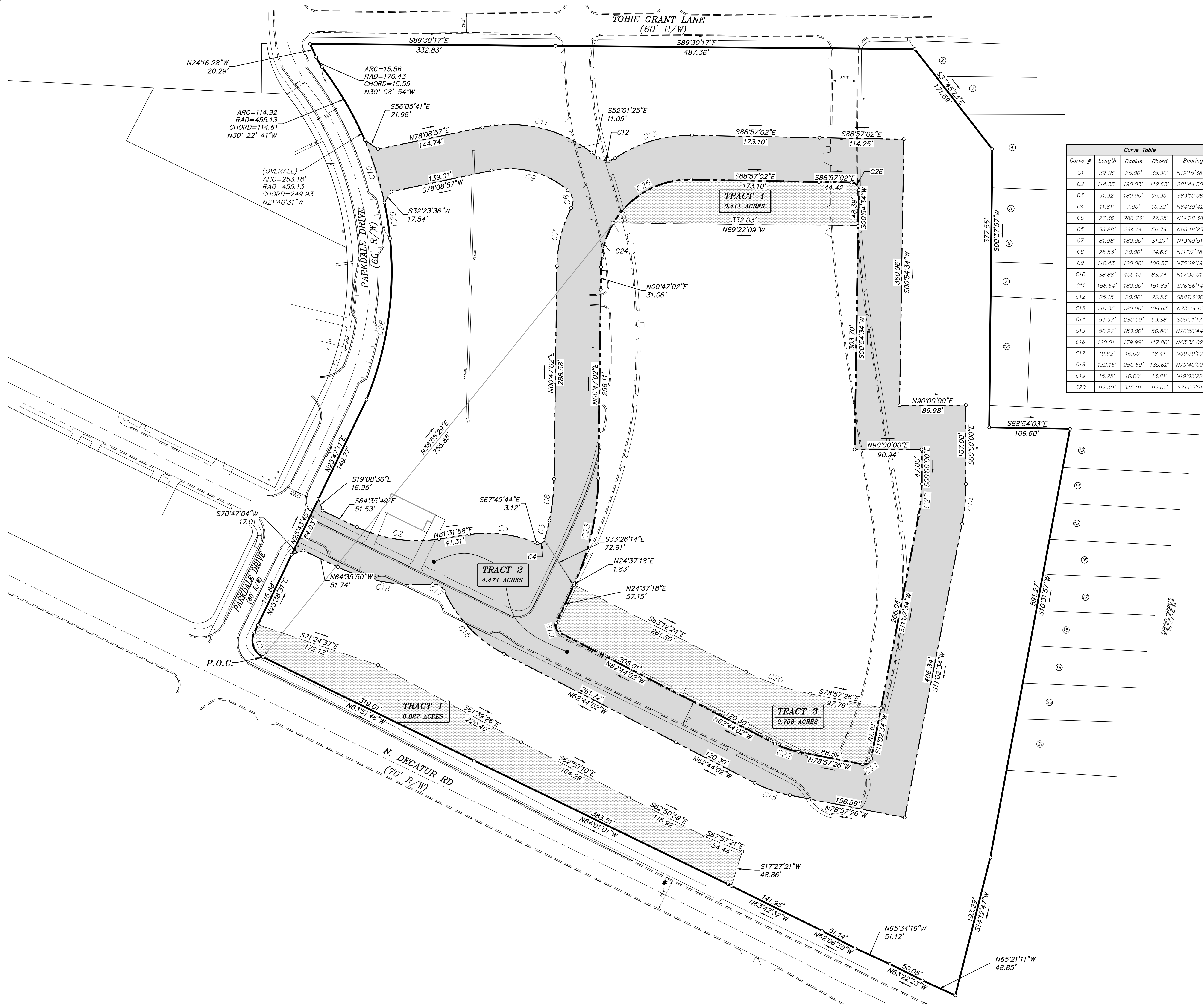
DRAWN BY: JFW
 CHECKED BY: JNH
 DATE: JULY 22, 2016
 SCALE: 1"=40'

FOR HOUSING DEVELOPMENT CORPORATION OF DEKALB, INC. (HDC)
 DEKALB COUNTY GEORGIA
 LAND LOT(S) 46 DISTRICT 18TH
 CITY OF SCOTTSDALE

PLANNERS AND ENGINEERS COLLABORATIVE

"WE PROVIDE SOLUTIONS"

site planning – landscape architecture – civil engineering – land surveying
 350 research court – peachtree corners, georgia – 30092 – (770) 461-2741
 www.pcollab.com



Curve #	Length	Radius	Chord	Bearing
C1	39.18'	25.00'	35.30'	N19°15'38"W
C2	114.35'	190.03'	112.63'	S81°44'50"E
C3	91.32'	180.00'	90.35'	S83°10'08"E
C4	11.61'	7.00'	10.32'	N64°39'42"E
C5	27.36'	286.73'	27.35'	N14°28'38"E
C6	56.88'	294.14'	56.79'	N06°19'25"E
C7	81.98'	180.00'	81.27'	N13°49'51"E
C8	26.53'	20.00'	24.63'	N11°07'28"W
C9	110.43'	120.00'	106.57'	N75°29'19"W
C10	88.88'	455.13'	88.74'	N17°33'01"W
C11	156.54'	180.00'	151.65'	S76°56'14"E
C12	25.15'	20.00'	23.53'	S88°03'00"E
C13	110.35'	180.00'	108.63'	N73°29'12"E
C14	53.97'	280.00'	53.88'	S05°51'17"W
C15	50.97'	180.00'	50.80'	N70°50'44"W
C16	120.01'	179.99'	117.80'	N43°38'02"W
C17	19.62'	16.00'	18.41'	N59°39'10"W
C18	132.15'	250.60'	130.62'	N79°40'02"W
C19	15.25'	10.00'	13.81'	N19°03'22"W
C20	92.30'	335.01'	92.01'	S71°03'51"E

Curve #	Length	Radius	Chord	Bearing
C21	15.71'	10.00'	14.14'	S56°02'34"W
C22	33.98'	120.00'	33.86'	N70°50'44"W
C23	147.34'	354.14'	146.28'	N12°42'10"E
C24	62.48'	120.00'	61.78'	N15°41'59"E
C25	126.57'	120.00'	120.79'	N60°49'57"E
C26	15.68'	10.00'	14.12'	S44°01'14"E
C27	42.40'	220.00'	42.34'	S05°31'17"W
C28	223.10'	455.13'	220.88'	N08°18'15"E
C29	49.38'	455.13'	49.36'	N08°50'50"W



REV	DATE	DESCRIPTION	JNH	BY
1	06/14/19	ADD OVERALL LEGAL DESCRIPTION	JNH	

LAND SWAP EXHIBIT - PROPOSED
 DRAWN BY: JFW
 CHECKED BY: JNH
 DATE: JULY 22, 2016
 SCALE: 1"=40'

FOR
 HOUSING DEVELOPMENT CORPORATION OF DEKALB, INC. (HDC)
 DEKALB COUNTY
 GEORGIA
 LAND LOT(S) 46
 DISTRICT 18TH
 CITY OF SCOTTSDALE

PLANNERS AND ENGINEERS COLLABORATIVE
 "WE PROVIDE SOLUTIONS"
 site planning - landscape architecture - civil engineering - land surveying
 350 research court - peachtree corners, georgia - 30092 - (770) 461-2741
 www.pacollab.com