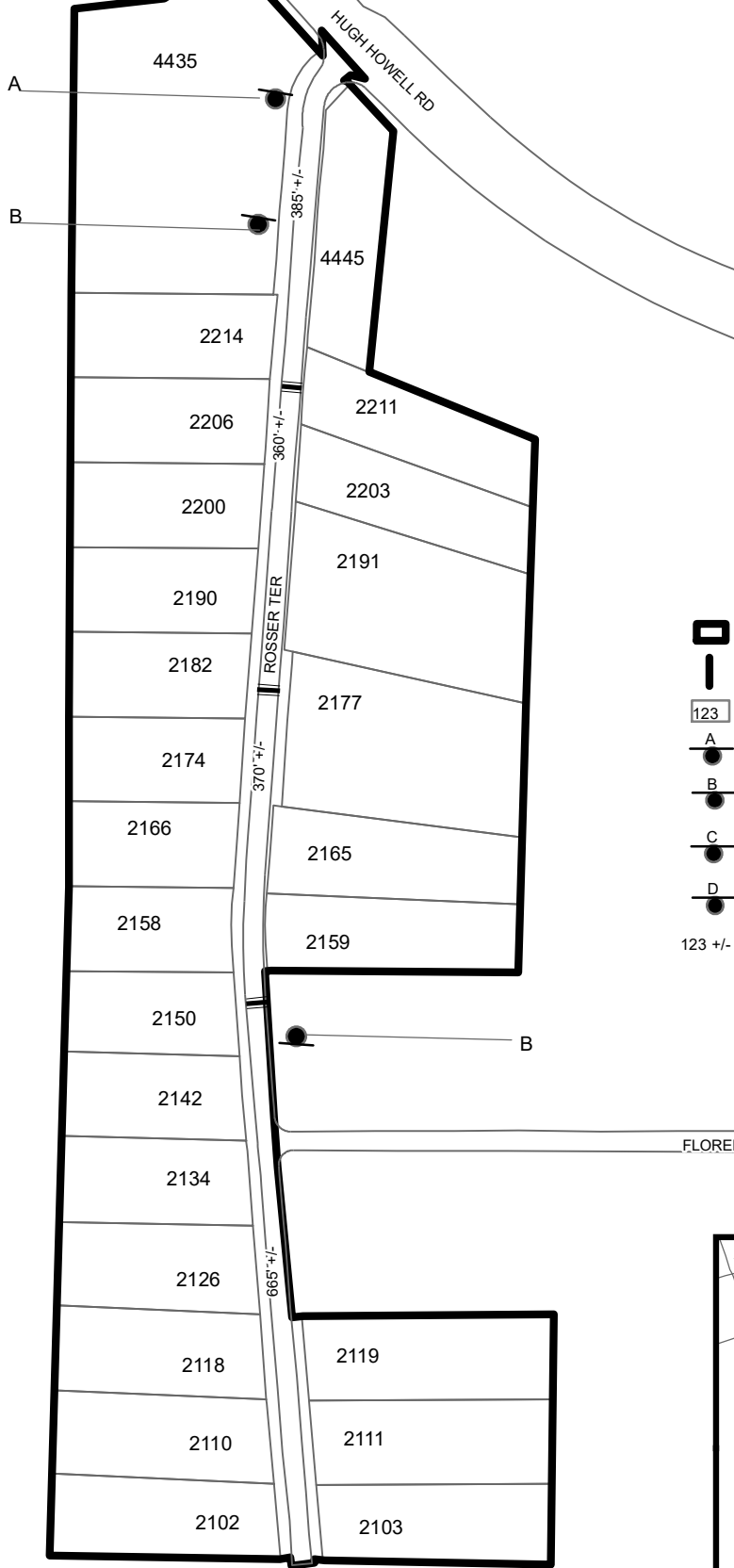


TRAFFIC CALMING DISTRICT 23-18-00

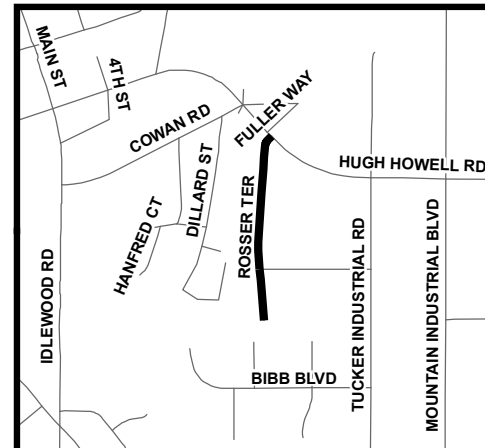


LEGEND

- AFFECTED AREA
- SPEED TABLES (3)
- PARCEL BOUNDARY AND ADDRESS NUMBER
- TRAFFIC CALMING DISTRICT SIGNS
- SPEED HUMPS AHEAD SIGN AND ADVISORY 15 MPH SPEED PLAQUE
- SPEED HUMP AHEAD SIGN, CROSS STREET, AND ADVISORY 15 MPH SPEED PLAQUE
- SPEED HUMP SIGN AND DOWNWARD DIAGONAL LEFT ARROW PLAQUE
- 123 +/- DISTANCE BETWEEN TRAFFIC CALMING MEASURES (CENTER TO CENTER) & DISTANCE BETWEEN TRAFFIC CALMING MEASURES AND END OF STREET

NOTES:

- 1) NUMBER OF PARCELS IN AFFECTED AREA: 26
- 2) STREET(S) IN AFFECTED AREA: ROSSER TER & HUGH HOWELL RD
- 3) EDGE OF TRAFFIC CALMING MEASURE NOT TO ENCROACH WITHIN 5' OF DRIVEWAY RETURNS



DEKALB COUNTY
TRANSPORTATION DIVISION
TRAFFIC CALMING SECTION

DRAWN BY: AE
REVIEWED BY: AE
REVIEWED BY:
REVIEWED BY:

SCALE: NTS

Date: 2/28/2023

ROSSER TERRACE

DIST: 18TH LAND LOT: 214

COMMISSION DISTRICTS: 1 & 7