



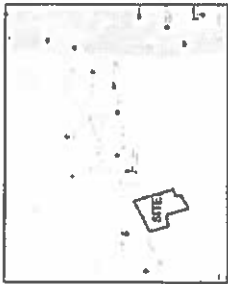
**Paradigm**  
Engineering Services, Inc.  
1105 W. Peachtree Street, N.W.  
Atlanta, GA 30309  
404.525.9111  
www.paradigmeng.com

DATE	11/15/17
BY	GSW
PROJECT	ZONING SITE PLAN
CLIENT	INLAND COMMUNITIES, LLC

NO. OF SHEETS	1
SHEET NO.	1
TITLE	ZONING SITE PLAN
DATE	11/15/17
BY	GSW

Inland Communities, LLC  
30 South St  
Lawrenceville, GA 30046  
(770) 962-1111

**ZONING SITE PLAN**  
2779 LAWRENCEVILLE HIGHWAY  
LAWRENCEVILLE, GEORGIA  
Dekalb County, Georgia



SITE LOCATION MAP

**SITE DATA**  
2779 LAWRENCEVILLE HIGHWAY  
LAWRENCEVILLE, GEORGIA  
Dekalb County, Georgia  
PROJECT NO. 17-00000001  
PROPOSED ZONING DISTRICT R-4  
PROPOSED LOT COVERAGE 35%  
PROPOSED LOT SPACE 150 FT x 100 FT  
PROPOSED OPEN SPACE 3 SPACE PER CHALLENGE - 48

**REQUIREMENTS**  
MINIMUM LOT COVERAGE 35% (35.00%)  
MINIMUM LOT SPACE 150 FT x 100 FT  
MINIMUM OPEN SPACE 3 SPACE PER CHALLENGE - 48

**REQUIREMENTS**  
MINIMUM LOT COVERAGE 35% (35.00%)  
MINIMUM LOT SPACE 150 FT x 100 FT  
MINIMUM OPEN SPACE 3 SPACE PER CHALLENGE - 48

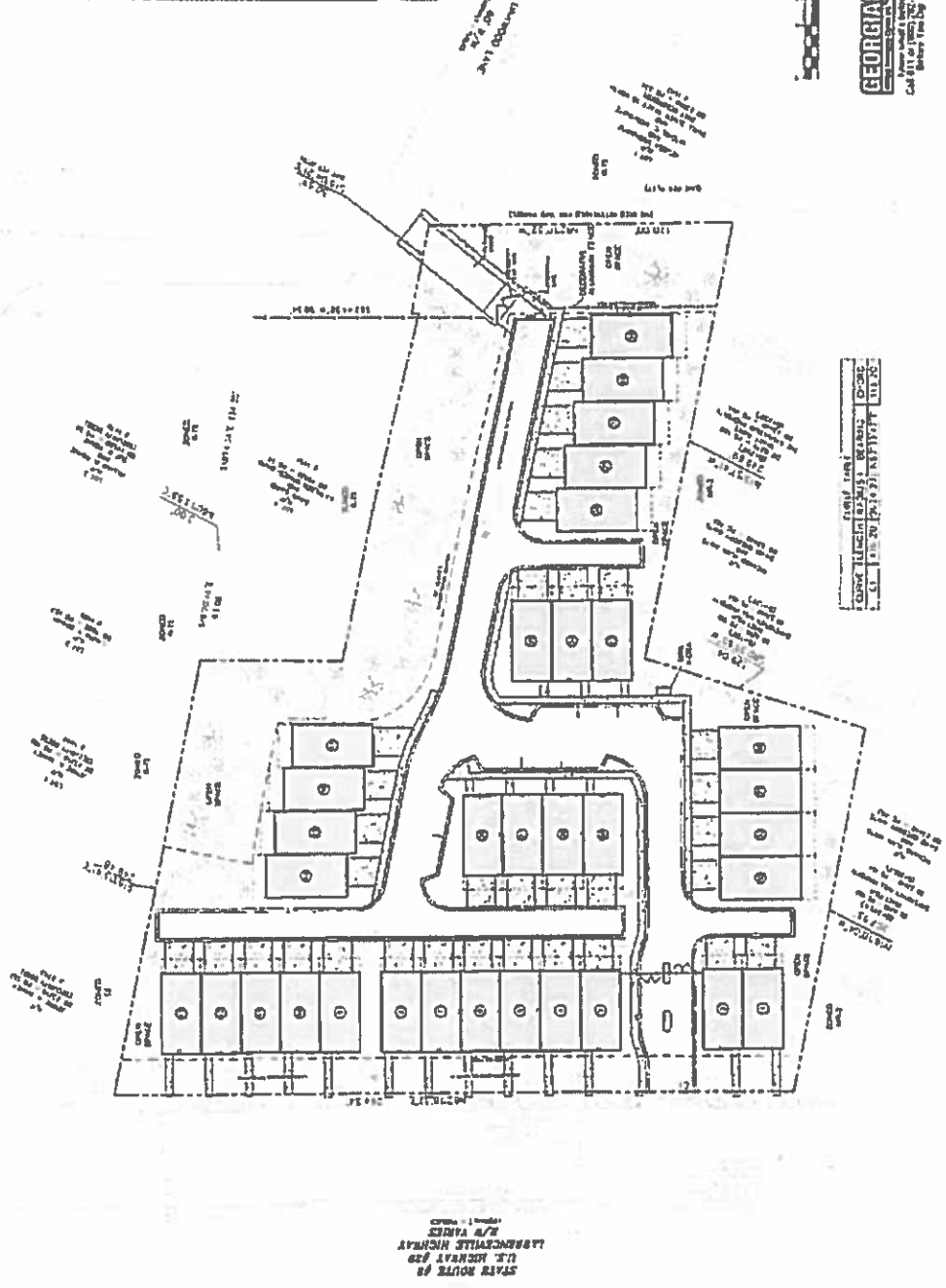
**FLOOD PLAIN NOTE**  
This site is not located within a flood plain.



**CAUTION**  
This plan is prepared for the specific project and site shown. It is not to be used for any other project or site without the express written consent of the engineer. The engineer assumes no responsibility for the accuracy or completeness of the information provided to the engineer.

**GEORGIA**  
Professional Engineer  
Gregory S. White  
License No. 28766  
State of Georgia

SEE SHEET 13 FOR  
GENERAL NOTES



TYPE	PLAN	SYMBOL	DESCRIPTION
1	1	(Symbol)	1
2	2	(Symbol)	2
3	3	(Symbol)	3
4	4	(Symbol)	4
5	5	(Symbol)	5
6	6	(Symbol)	6
7	7	(Symbol)	7
8	8	(Symbol)	8
9	9	(Symbol)	9
10	10	(Symbol)	10
11	11	(Symbol)	11
12	12	(Symbol)	12
13	13	(Symbol)	13
14	14	(Symbol)	14
15	15	(Symbol)	15
16	16	(Symbol)	16
17	17	(Symbol)	17
18	18	(Symbol)	18
19	19	(Symbol)	19
20	20	(Symbol)	20

STATE ROUTE 98  
R/W VARIANCE  
R/W VARIANCE  
R/W VARIANCE



# Knox Box with standard Gate in Fenced Area

