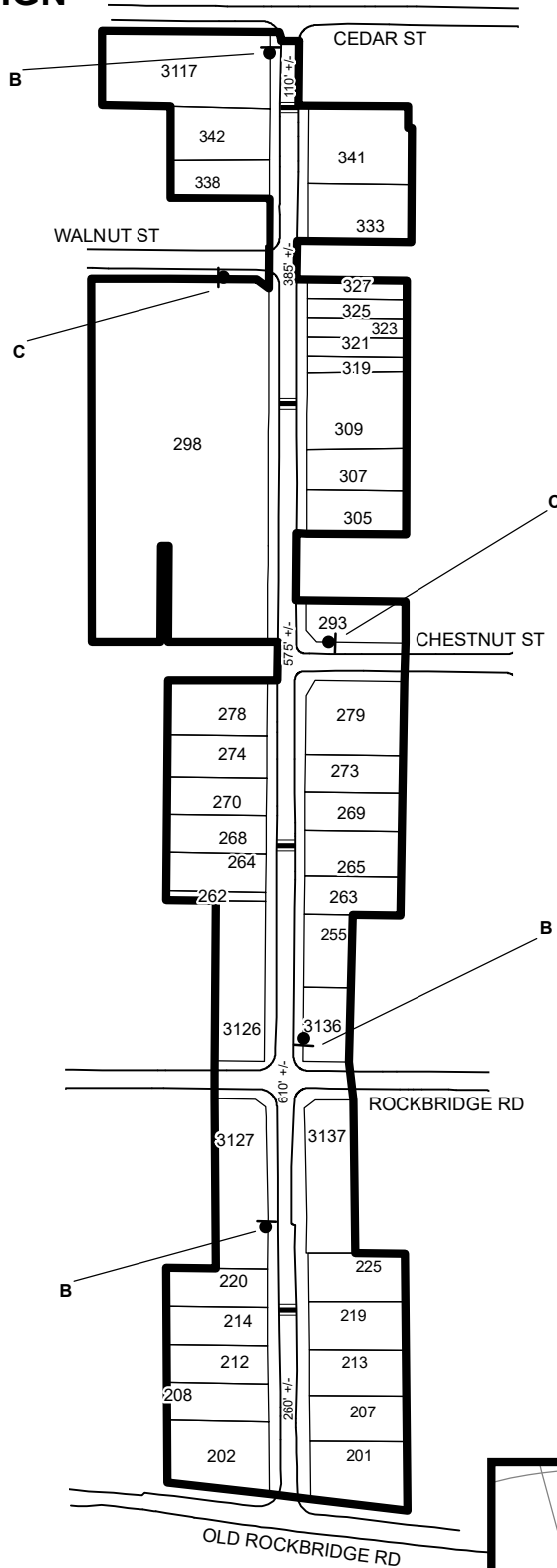


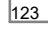

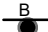
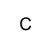


# TRAFFIC CALMING DISTRICT 19-18-00 PROPOSED DESIGN

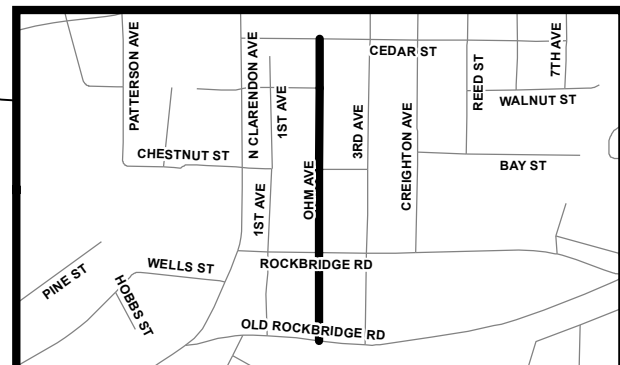


## LEGEND

-  AFFECTED AREA
  -  SPEED TABLES (4)
  -  PARCEL BOUNDARY AND ADDRESS NUMBER
  -  TRAFFIC CALMING DISTRICT SIGNS
  -  SPEED HUMPS AHEAD SIGN AND ADVISORY 15 MPH SPEED PLAQUE
  -  SPEED HUMP AHEAD SIGN, CROSS STREET, AND ADVISORY 15 MPH SPEED PLAQUE
- 123 +/- DISTANCE BETWEEN TRAFFIC CALMING MEASURES (CENTER TO CENTER) & DISTANCE BETWEEN TRAFFIC CALMING MEASURES AND END OF STREET

## NOTES:

- 1] NUMBER OF PARCELS IN AFFECTED AREA: 41
- 2] STREET(S) IN AFFECTED AREA: OHM AVE, CEDAR ST, ROCKBRIDGE RD
- 3] EDGE OF TRAFFIC CALMING MEASURE NOT TO ENCROACH WITHIN 5' OF DRIVEWAY RETURNS



DEKALB COUNTY  
TRANSPORTATION DIVISION  
TRAFFIC CALMING SECTION

DRAWN BY: CH  
REVIEWED BY: CH  
REVIEWED BY:  
REVIEWED BY:

SCALE: N.T.S.  
Date: 7/9/2019

OHM AVE  
DIST: 18 TH LAND LOT: 09  
COMMISSION DISTRICTS: 4 & 6