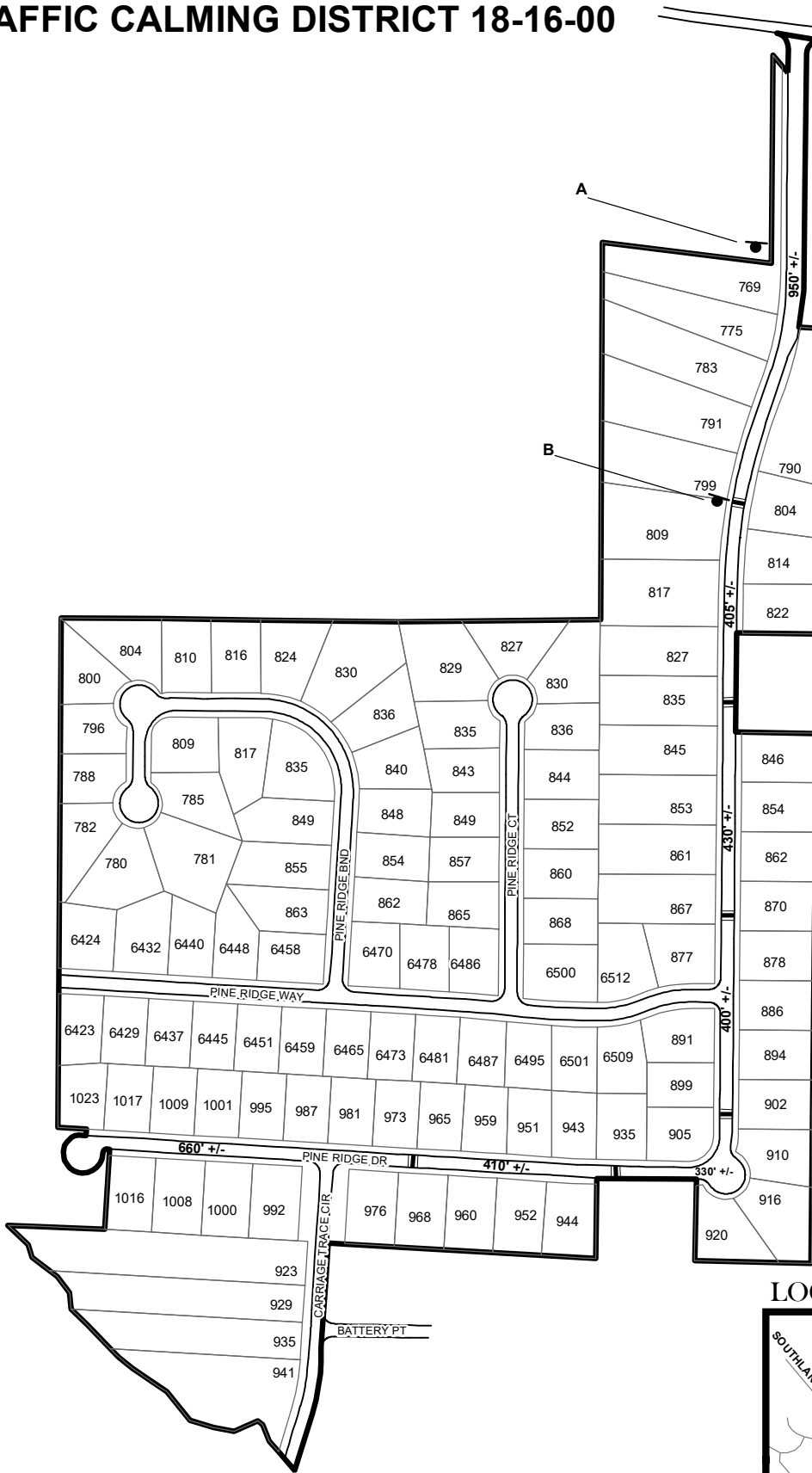


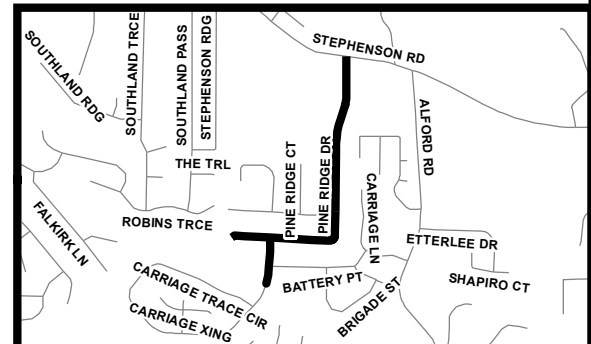
# TRAFFIC CALMING DISTRICT 18-16-00



### LEGEND

- AFFECTED AREA
- SPEED TABLES (6)
- PARCEL BOUNDARY AND ADDRESS NUMBER
- TRAFFIC CALMING DISTRICT SIGNS
- SPEED HUMPS AHEAD SIGN AND ADVISORY 15 MPH SPEED PLAQUE
- SPEED HUMP AHEAD SIGN, CROSS STREET, AND ADVISORY 15 MPH SPEED PLAQUE
- 123 +/- DISTANCE BETWEEN TRAFFIC CALMING MEASURES (CENTER TO CENTER) & DISTANCE BETWEEN TRAFFIC CALMING MEASURES AND END OF STREET

### LOCATION MAP



### NOTES:

- 1) NUMBER OF PARCELS IN AFFECTED AREA: 117
- 2) STREET(S) IN AFFECTED AREA: PINE RIDGE DR, PINE RIDGE BND, PINE RIDGE CT, PINE RIDGE WAY, CARRIAGE TRACE CIR
- 3) EDGE OF TRAFFIC CALMING MEASURE NOT TO ENCROACH WITHIN 5' OF DRIVEWAY RETURNS

DEKALB COUNTY  
TRANSPORTATION DIVISION  
TRAFFIC CALMING SECTION

DRAWN BY: CH  
REVIEWED BY: CH  
REVIEWED BY: AE  
REVIEWED BY: PGK

SCALE: N.T.S.

Date: 10/23/2018

PINE RIDGE DR  
DIST: 16 TH LAND LOT: 127 & 128  
COMMISSION DISTRICTS: 4 & 7