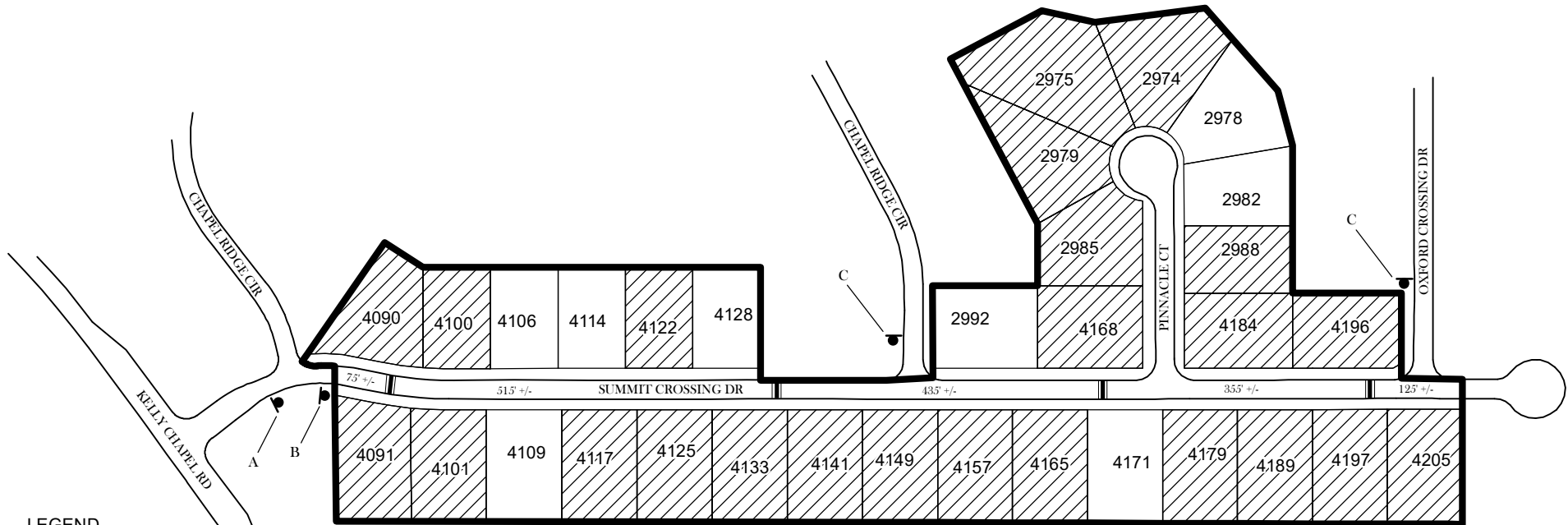



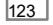





TRAFFIC CALMING DISTRICT 19-15-06

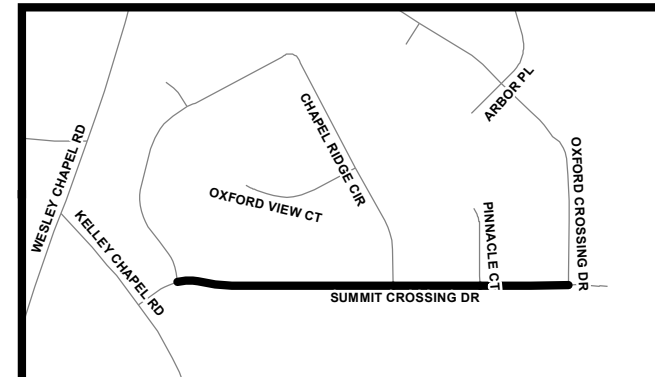


LEGEND

-  AFFECTED AREA
-  SPEED TABLES (4)
-  YES VOTES (24)
-  PARCEL BOUNDARY AND ADDRESS NUMBER
-  TRAFFIC CALMING DISTRICT SIGNS
-  SPEED HUMPS AHEAD SIGN AND ADVISORY 15 MPH SPEED PLAQUE
-  SPEED HUMP AHEAD SIGN, CROSS STREET, AND ADVISORY 15 MPH SPEED PLAQUE
- 123 +/- DISTANCE BETWEEN TRAFFIC CALMING MEASURES (CENTER TO CENTER) & DISTANCE BETWEEN TRAFFIC CALMING MEASURES AND END OF STREET

NOTES:

- 1] NUMBER OF PARCELS IN AFFECTED AREA: 32
- 2] STREET(S) IN AFFECTED AREA: SUMMIT CROSSING DR, CHAPEL RIDGE CIR, PINNACLE CRT
- 3] EDGE OF TRAFFIC CALMING MEASURE NOT TO ENCR OACH WITHIN 5' OF DRIVEWAY RETURNS



DEKALB COUNTY
TRANSPORTATION DIVISION
TRAFFIC CALMING SECTION

DRAWN BY: CH
REVIEWED BY: CH
REVIEWED BY:
REVIEWED BY:

SCALE: N.T.S.

Date: 8/27/2019

SUMMIT CROSSING DR

DIST: 15 TH LAND LOT: 94

COMMISSION DISTRICTS: 3 & 7