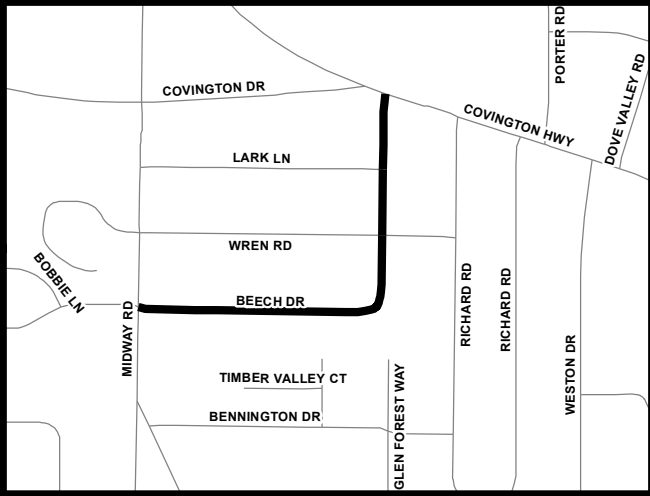
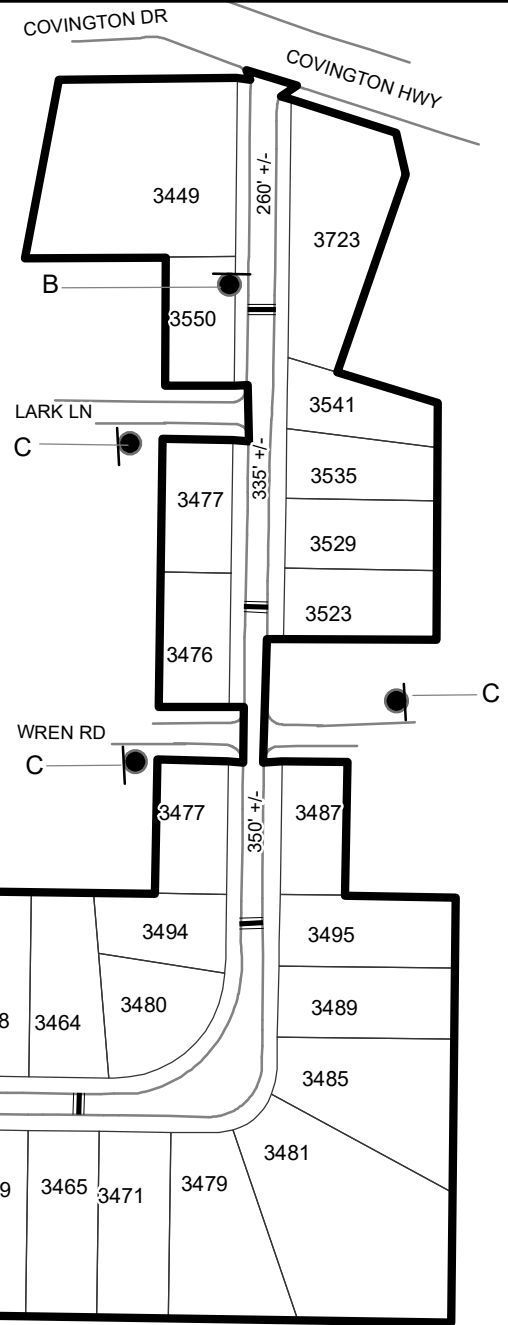


TRAFFIC CALMING DISTRICT 23-15-00



LEGEND

- AFFECTED AREA
- SPEED TABLES (6)
- PARCEL BOUNDARY AND ADDRESS NUMBER
- A TRAFFIC CALMING DISTRICT SIGNS
- B SPEED HUMPS AHEAD SIGN AND ADVISORY 15 MPH SPEED PLAQUE
- C SPEED HUMP AHEAD SIGN, CROSS STREET, AND ADVISORY 15 MPH SPEED PLAQUE
- 123 +/- DISTANCE BETWEEN TRAFFIC CALMING MEASURES (CENTER TO CENTER) & DISTANCE BETWEEN TRAFFIC CALMING MEASURES AND END OF STREET



NOTES:

- 1) NUMBER OF PARCELS IN AFFECTED AREA: 47
- 2) STREET(S) IN AFFECTED AREA: BEECH DR, WREN RD, LARK LN, COVINGTON DR & COVINGTON HIGHWAY
- 3) EDGE OF TRAFFIC CALMING MEASURE NOT TO ENCROACH WITHIN 5' OF DRIVEWAY RETURNS

DEKALB COUNTY TRANSPORTATION DIVISION TRAFFIC CALMING SECTION	DRAWN BY: AE	SCALE: N.T.S.	BEECH DRIVE DIST: 15TH LAND LOT: 219 COMMISSION DISTRICTS: 3 & 7
	REVIEWED BY: AE		
	REVIEWED BY:	Date: 7/25/2023	
	REVIEWED BY:		