

# OVERVIEW OF PRECINCT BOUNDARY CHANGES

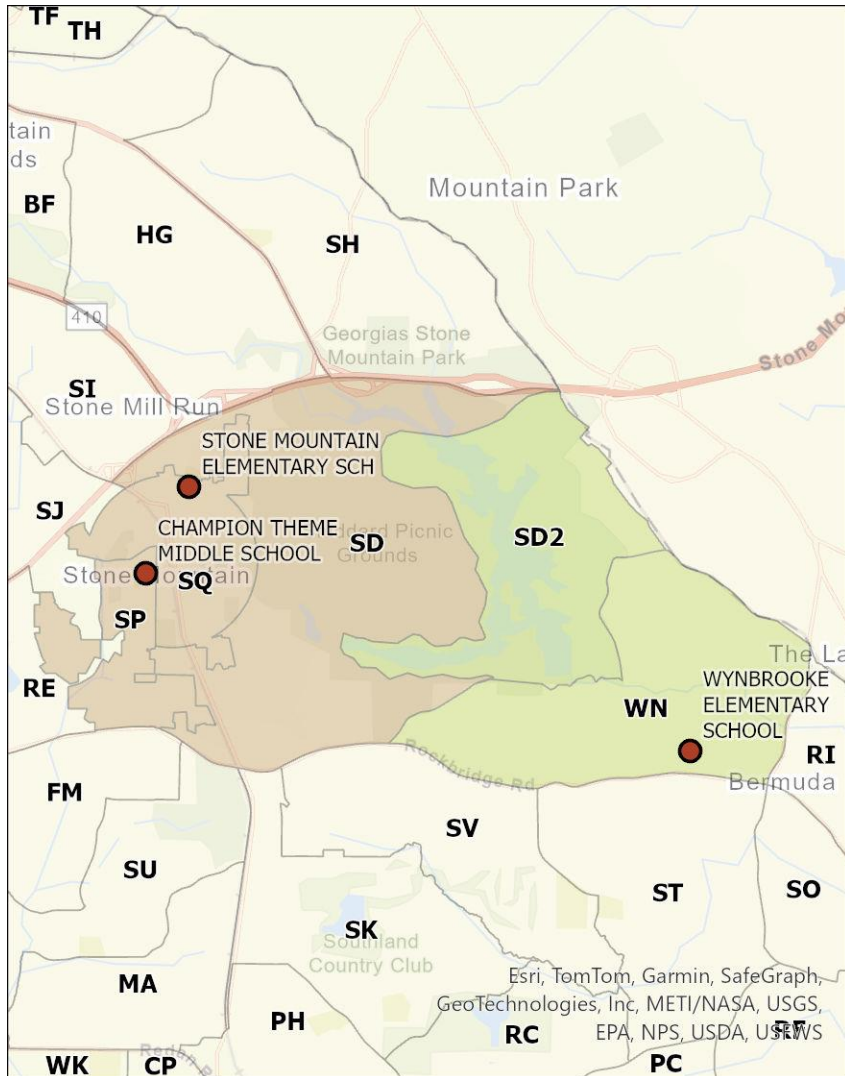
Six precinct boundary changes are proposed.

Three are intended to reduce the distance that voters travel to their polling places.

Three changes align precinct boundaries with municipal annexations. These realignments alleviate the potential privacy concerns that would otherwise result if a small number of voters in a precinct were registered to vote in a city or district.

The proposed precinct changes move 3,057 voters to new polling places. Another 421 voters would change precincts without requiring a new polling place.

# WYNBROOKE ELEM (WN)



## NAME

P-2025-001

## REASON

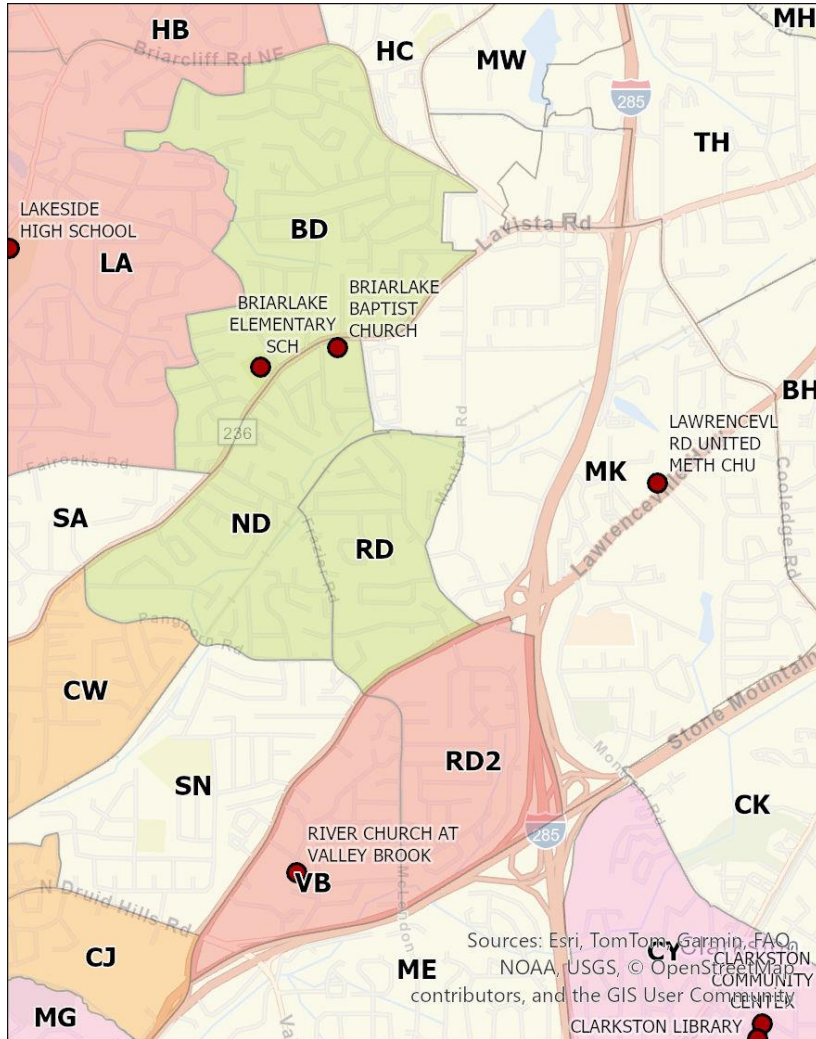
This change reduces the distance that voters near the county line will travel to vote.

## CHANGE

Redraw the boundary of Wynbrooke Elem to absorb the region marked SD2.

Precinct	Before	After
Stone Mountain Elem (SD and SD2)	2,336	1,869
Wynbrooke Elem (WN)	3,214	3,681

# VALLEY BROOK (VB)



## NAME

P-2025-002

## REASON

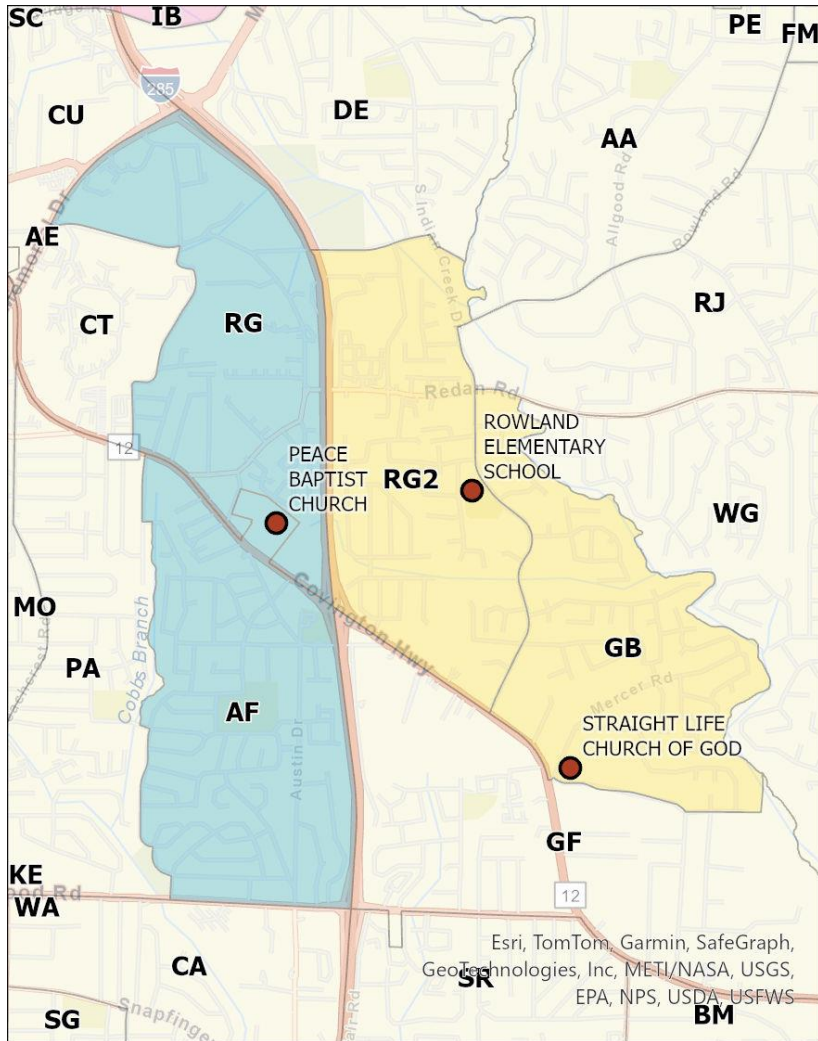
This change reduces the distance that voters in Rehoboth will travel to vote.

## CHANGE

Redraw the boundary of Valley Brook to absorb the region marked RD2.

Precinct	Before	After
Rehoboth (RD and RD2)	1,736	854
Valley Brook (VB)	968	1,850

# AUSTIN DRIVE (AF)



## NAME

P-2025-003

## REASON

This change reduces the distance traveled by voters in the area marked RG and eliminates the need for them to cross I-285.

## CHANGE

Redraw the boundary of Austin Drive to absorb the region marked RG.

Precinct	Before	After
Rowland Elem (RG and RG2)	3,386	1,775
Austin Drive (AF)	2,089	3,700

Esri, TomTom, Garmin, SafeGraph, Geotechnologies, Inc, METI/NASA, USGS, EPA, NPS, USDA, USFWS

# AVONDALE (AE)



**NAME**

P-2025-004

**REASON**

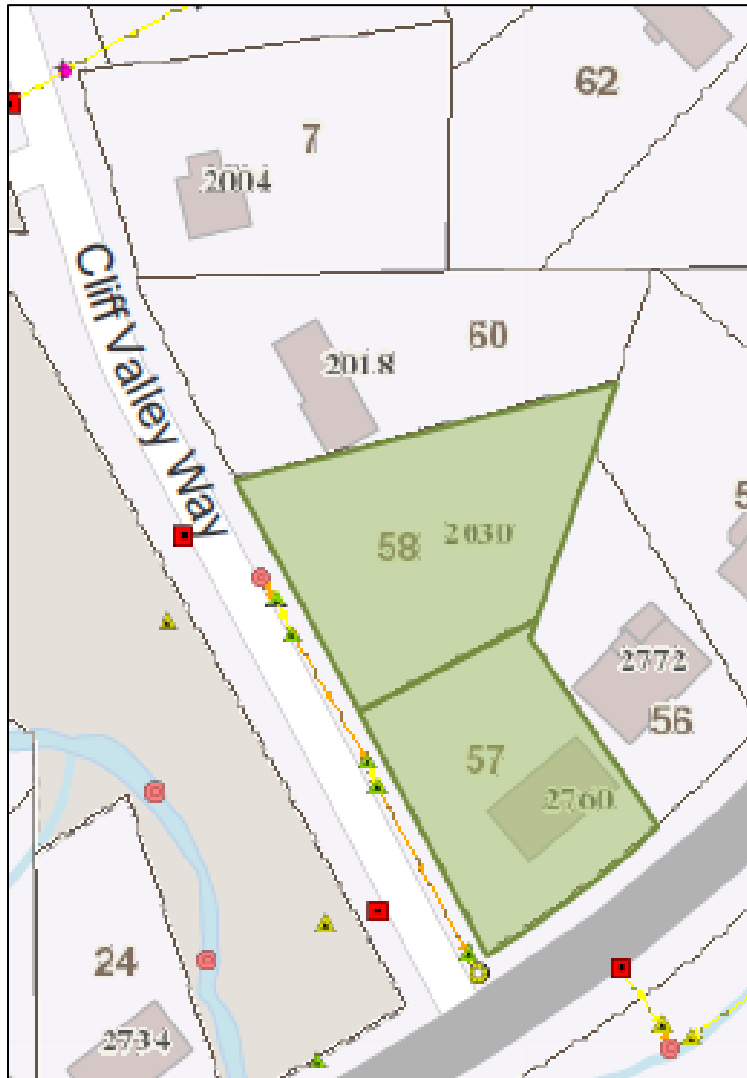
This change allows two newly-annexed properties to vote in the Avondale precinct with the rest of the City of Avondale Estates.

**CHANGE**

Redraw the boundary of Avondale to absorb the two properties shown in the green region on the map.

Precinct	Before	After
Avondale High (AI)	2,943	2,940
Avondale (AE)	3,135	3,138

# WOODWARD (WJ)



## NAME

P-2025-005

## REASON

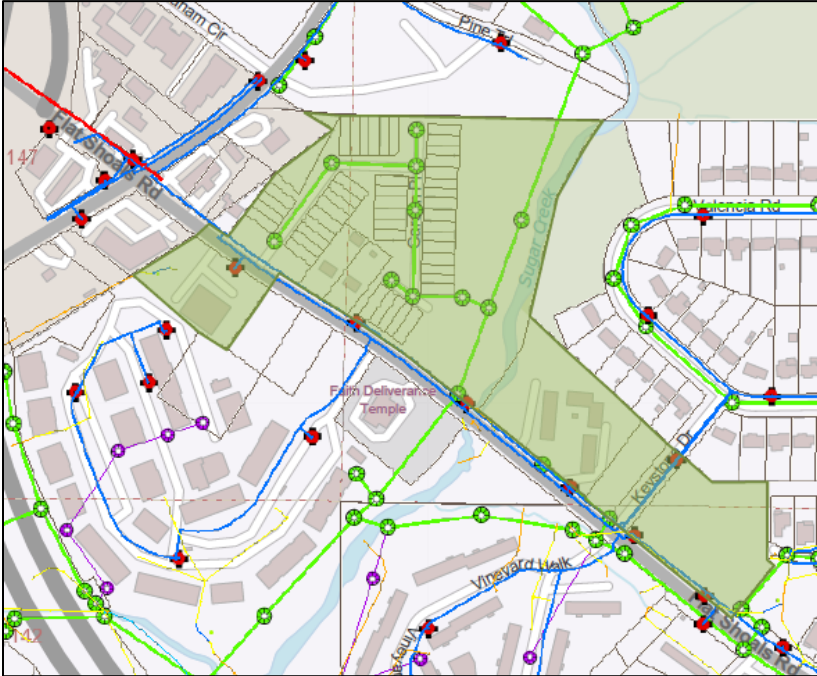
This change allows two newly-annexed properties to vote in the Woodward precinct with other City of Brookhaven addresses.

## CHANGE

Redraw the boundary of Woodward to absorb the two properties shown in the green region on the map.

Precinct	Before	After
Briarcliff (BG)	2,861	2,858
Woodward (WJ)	2,636	2,639

# WOODWARD (WJ)



## NAME

P-2025-006

## REASON

This change moves a newly-annexed subdivision in the Piney Grove and Terry Mill Precincts to the Burgess Elem precinct with other City of Atlanta addresses.

## CHANGE

Redraw the boundary of Burgess Elem to absorb the properties shown in green on the map.

Redraw the boundary of Terry Mill to absorb the portion of Piney Grove south of Flat Shoals Road, which would otherwise be cut off by the annexation. This latter portion of the change does not affect the electors' polling place because Piney Grove and Terry Mill are combined.

Precinct	Before	After
Piney Grove (PN)	2,058	1,546
Terry Mill (TA)	2,356	2,777
Burgess Elem (BR)	3,190	3,281