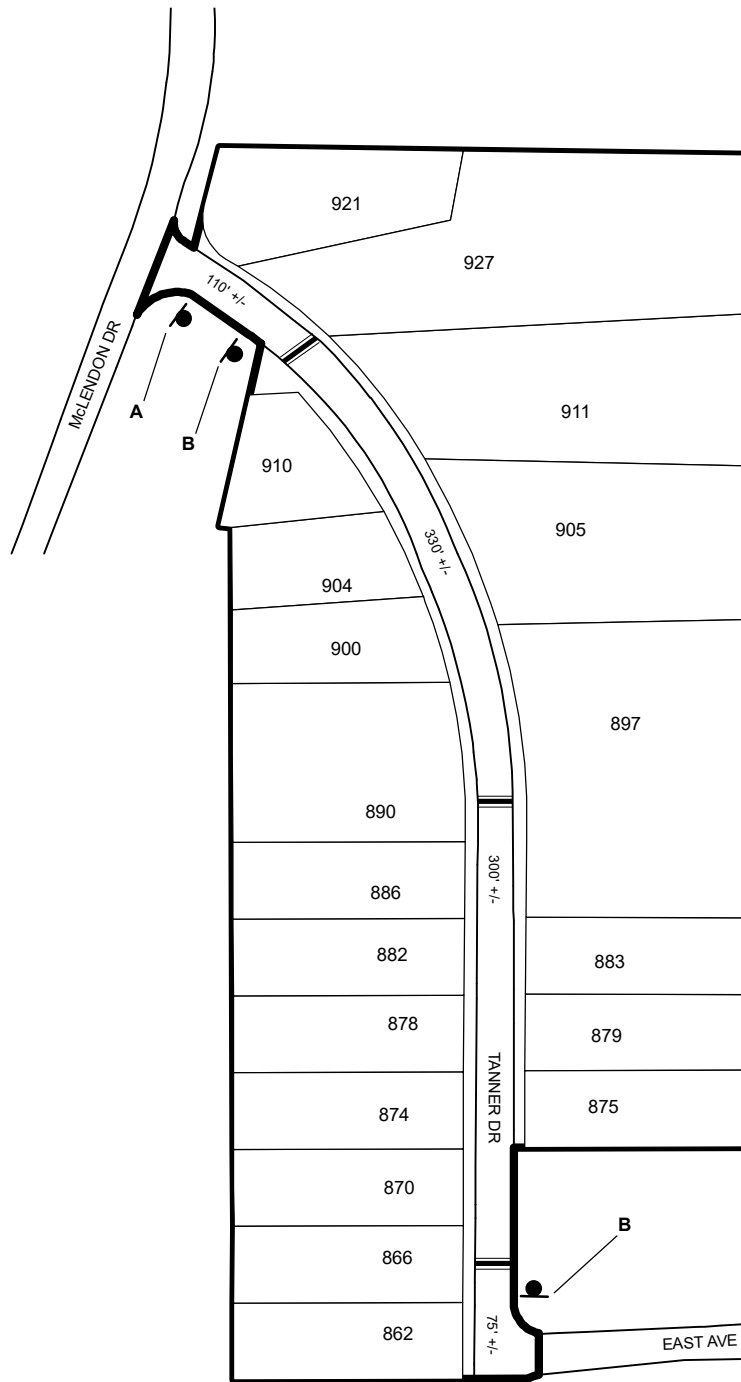


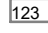

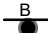



TRAFFIC CALMING DISTRICT 19-18-00

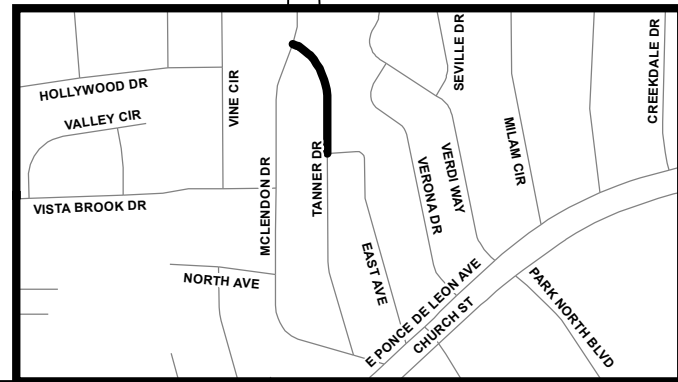


LEGEND

-  AFFECTED AREA
-  SPEED TABLES (3)
-  PARCEL BOUNDARY AND ADDRESS NUMBER
-  TRAFFIC CALMING DISTRICT SIGNS
-  SPEED HUMPS AHEAD SIGN AND ADVISORY 15 MPH SPEED PLAQUE
-  SPEED HUMP AHEAD SIGN, CROSS STREET, AND ADVISORY 15 MPH SPEED PLAQUE

123 +/- DISTANCE BETWEEN TRAFFIC CALMING MEASURES (CENTER TO CENTER) & DISTANCE BETWEEN TRAFFIC CALMING MEASURES AND END OF STREET

- NOTES:
- 1] NUMBER OF PARCELS IN AFFECTED AREA: 19
 - 2] STREET(S) IN AFFECTED AREA: TANNER DR
 - 3] EDGE OF TRAFFIC CALMING MEASURE NOT TO ENCROACH WITHIN 5' OF DRIVEWAY RETURNS



DEKALB COUNTY TRANSPORTATION DIVISION TRAFFIC CALMING SECTION	DRAWN BY: CH	SCALE: N.T.S. Date: 5/14/2019	TANNER DR
	REVIEWED BY: CH		DIST: 18 TH LAND LOT: 65 & 98
	REVIEWED BY:	COMMISSION DISTRICTS: 4 & 6	
	REVIEWED BY:		