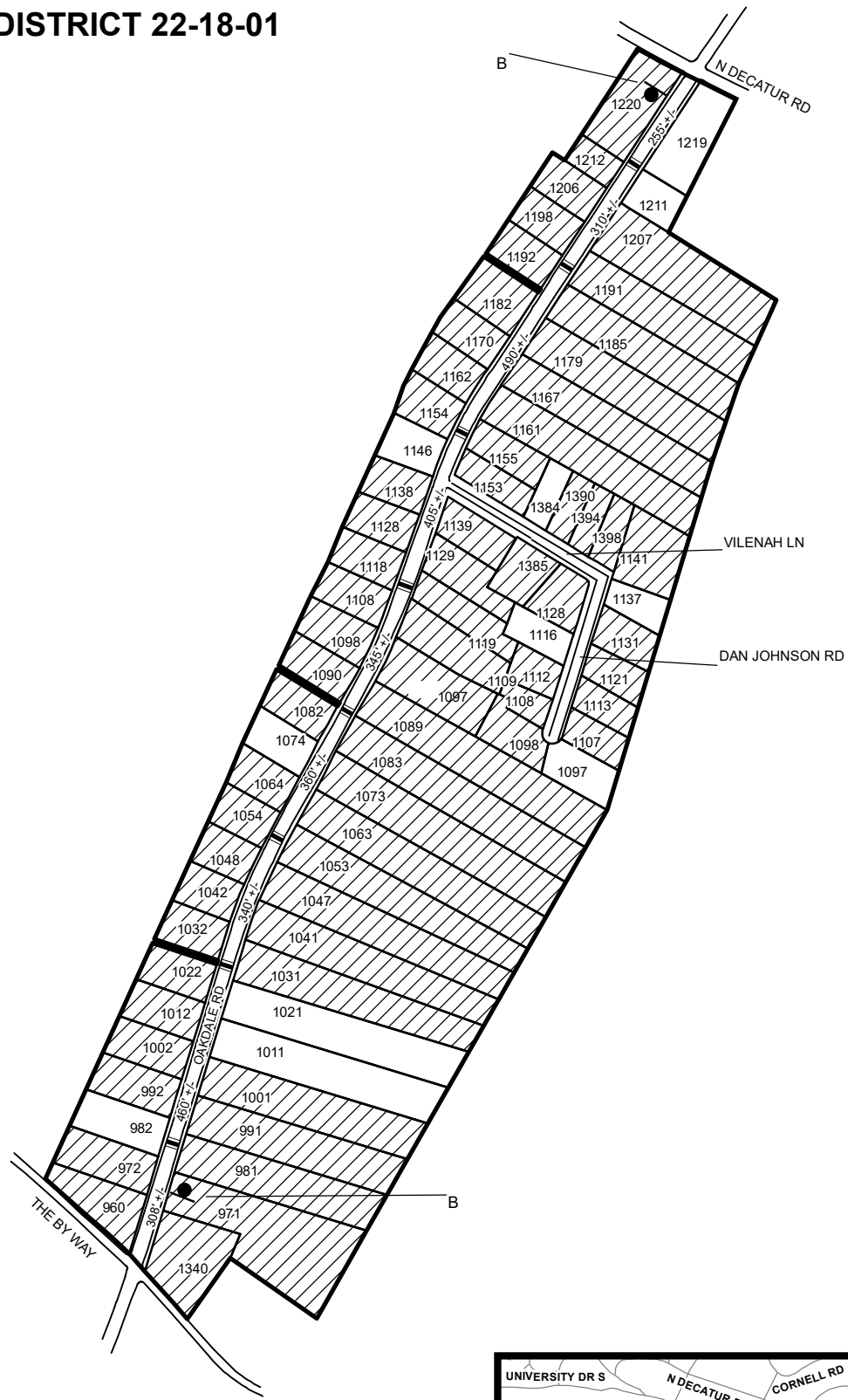



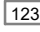



TRAFFIC CALMING DISTRICT 22-18-01

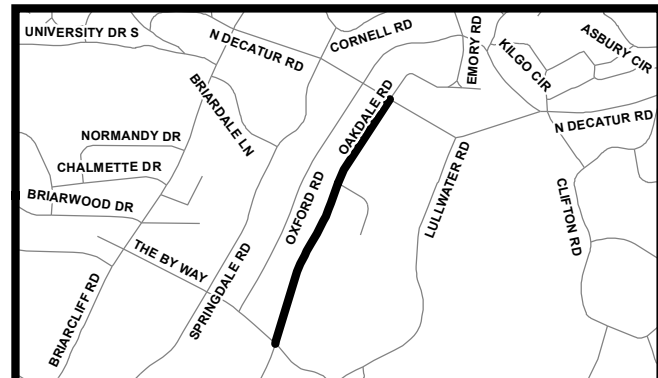


LEGEND

-  AFFECTED AREA
-  SPEED TABLES (8)
-  YES VOTES (66)
-  123 PARCEL BOUNDARY AND ADDRESS NUMBER
-  B SPEED HUMPS AHEAD SIGN AND ADVISORY 15 MPH SPEED PLAQUE
- 123 +/- DISTANCE BETWEEN TRAFFIC CALMING MEASURES (CENTER TO CENTER) & DISTANCE BETWEEN TRAFFIC CALMING MEASURES AND END OF STREET

NOTES:

- 1] NUMBER OF PARCELS IN AFFECTED AREA: 77
- 2] STREET(S) IN AFFECTED AREA: OAKDALE RD, DAN JOHNSON RD, THE BY WAY, VILENAH LN
- 3] EDGE OF TRAFFIC CALMING MEASURE NOT TO ENCROACH WITHIN 5' OF DRIVEWAY RETURNS



DEKALB COUNTY
TRANSPORTATION DIVISION
TRAFFIC CALMING SECTION

DRAWN BY: CH
REVIEWED BY: CH
REVIEWED BY:
REVIEWED BY:

SCALE: N.T.S.
Date: 1/25/2022

OAKDALE RD
DIST: 18 TH LAND LOT: 02 & 54
COMMISSION DISTRICTS: 2 & 6